

[Manuals.plus](#) /

> [DS ledsign](#) /

> DS ledsign P5 Outdoor LED Digital Sign Board 65x33 Inch User Manual

DS ledsign DSLED-PH5-5x5

DS ledsign P5 Outdoor LED Digital Sign Board User Manual

Model: DSLED-PH5-5x5

1. INTRODUCTION

This manual provides detailed instructions for the installation, operation, programming, and maintenance of your DS ledsign P5 Outdoor LED Digital Sign Board. Please read this manual thoroughly before using the product to ensure proper function and longevity. This LED display is designed for commercial outdoor use, offering high-resolution visuals and versatile content display options.

2. SAFETY INFORMATION

- **Electrical Safety:** Ensure the power supply matches the product's requirements. Do not overload electrical outlets. Disconnect power before any maintenance or installation.
- **Installation:** Installation should be performed by qualified personnel. Ensure the mounting structure can support the weight of the LED sign.
- **Outdoor Use:** The sign is weatherproof, but avoid direct high-pressure water jets. Ensure all connections are sealed to prevent water ingress.
- **Handling:** Handle the display with care to prevent damage to the LED modules. Avoid touching the LED surface directly.
- **Ventilation:** Ensure adequate ventilation around the unit to prevent overheating. Do not block ventilation openings.

3. PACKAGE CONTENTS

Please verify that all items are present in the package:

- DS ledsign P5 Outdoor LED Digital Sign Board (65x33 Inch)
- Power Cable (US Plug)
- Mounting Hardware (e.g., L-shaped lifting rings, screws)
- USB Flash Drive (for content transfer)

- Instruction Manual (this document)
- Software/App Installation Guide or Link



US Plug

High quality LED beads

Software and App

L-shaped lifting ring

Figure 3.1: Overview of included components and features, including the power plug, LED beads, software interface, and mounting hardware.

4. PRODUCT OVERVIEW

4.1 Key Features

- **High-Resolution Visuals:** P5 pixel pitch ensures crisp and clear images for advertisements, event information, and dynamic graphics.
- **Weatherproof Design:** Constructed to withstand various outdoor conditions, ensuring durability and consistent performance.
- **Seamless Installation:** User-friendly mounting system supports both wall and ceiling installations.
- **Versatile Applications:** Suitable for outdoor advertising, live event broadcasting, and general business visibility enhancement.
- **Multiple Programming Methods:** Supports WiFi, USB flash drive, and network cable for content updates.

4.2 Physical Dimensions



Figure 4.1: Physical dimensions of the LED sign, approximately 65 inches in length, 34 inches in height, and 2.4 inches in depth.

5. SETUP

5.1 Mounting the Display

1. **Choose Location:** Select a suitable outdoor location, ensuring clear visibility and access to a power source. Consider environmental factors and local regulations.
2. **Secure Mounting:** Use the provided L-shaped lifting rings and appropriate fasteners to securely mount the display. Ensure the mounting surface (wall or ceiling) can safely bear the sign's weight (approximately 55 lbs / 25 kg).
3. **Orientation:** The display supports both horizontal and vertical orientations. Plan your content accordingly.

5.2 Power Connection

1. Connect the provided power cable to the sign's power input port.
2. Plug the power cable into a grounded electrical outlet.
3. Ensure all connections are secure and protected from moisture.

6. OPERATING INSTRUCTIONS

6.1 Powering On/Off

Once connected to power, the sign will typically power on automatically. There is no physical power button on the unit itself. Power cycling is done by connecting or disconnecting the power supply.

6.2 Initial Display

Upon first power-on, the display may show a default message or a test pattern. To display custom content, programming is required (refer to Section 7).

7. PROGRAMMING THE DISPLAY

The DS ledsign P5 supports programming via WiFi, USB, or network cable. The primary method involves using dedicated software on a computer or a mobile application.

7.1 Software Installation

1. **Download Software:** Visit the official DS ledsign website or the provided link to download the latest version of the control software (e.g., HDPlayer).



Figure 7.1: Navigating to the software download section on the manufacturer's website.

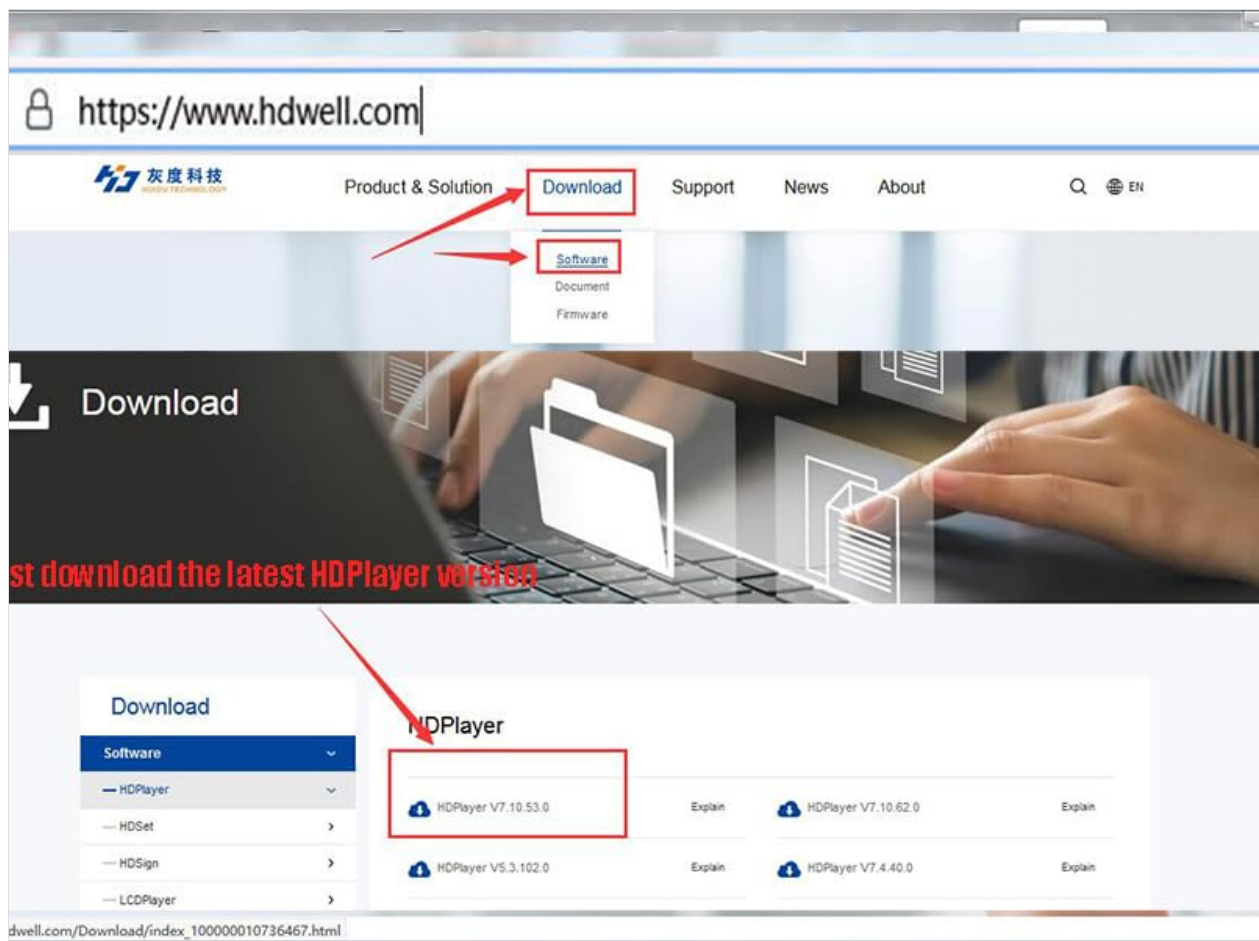


Figure 7.2: Selecting the appropriate HDPlayer software version for download.

2. **Install:** Follow the on-screen instructions to install the software on your computer.

7.2 Initial Software Configuration

1. **Open Software:** Launch the installed control software.
2. **Screen Parameters Setting:** Access the 'Screen Parameters Setting' or similar option within the software.
3. **Select Device Type:** Choose the correct device type for your P5 LED sign (e.g., C08L or similar model identifier). Ensure the width and height settings match your display's resolution.

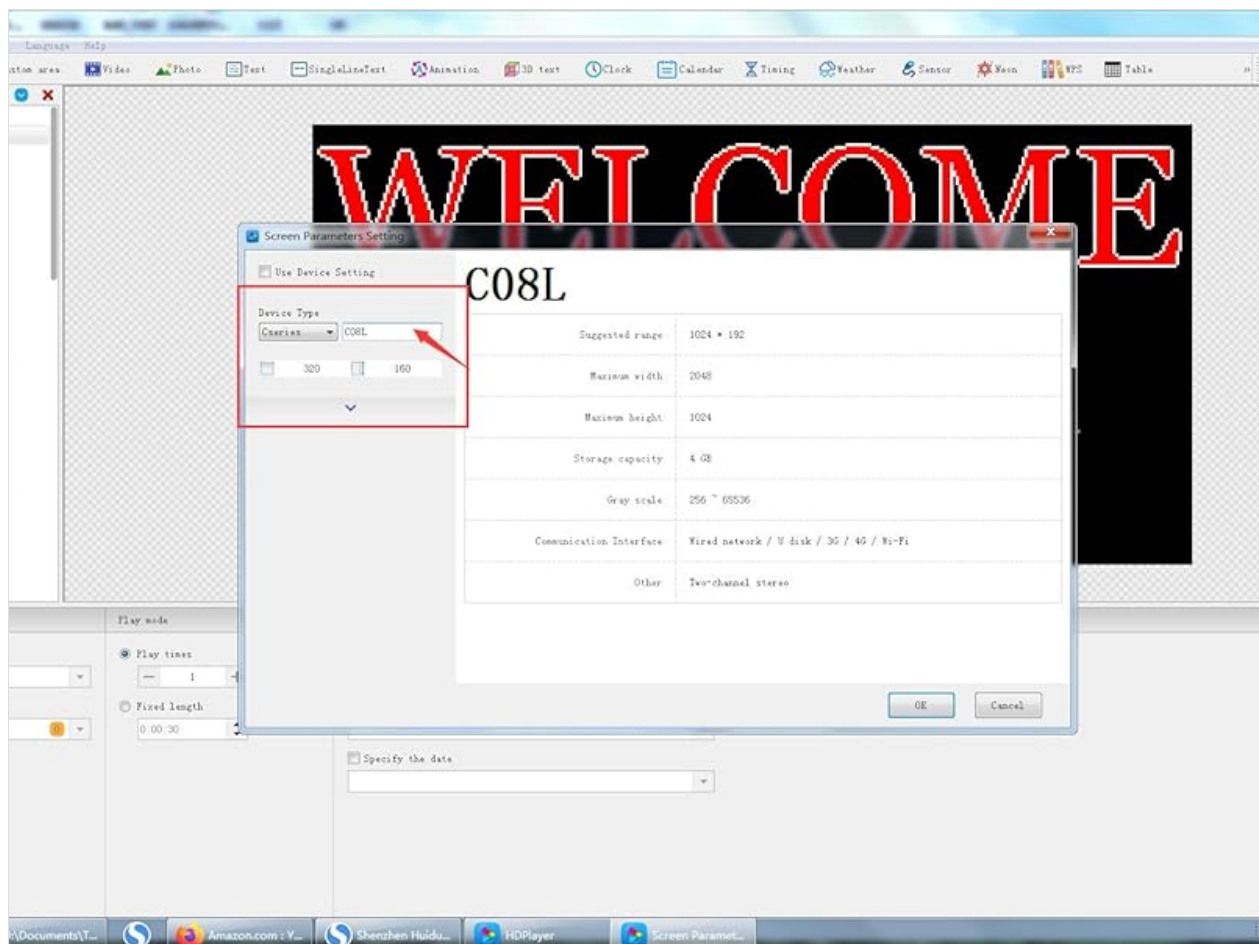


Figure 7.3: Configuring screen parameters, including device type and dimensions.

4. **Confirm Settings:** Click 'OK' to save the screen parameters.

7.3 Creating and Transferring Content

1. **Design Content:** Use the software's interface to create your desired messages, images, and videos. The software allows for various effects, fonts, and layouts.
2. **Vertical Display:** If you intend to use the sign in a vertical orientation, adjust the rotation setting in the software (e.g., 90 degrees). Note that vertical display mode typically requires computer software for configuration, not mobile apps.

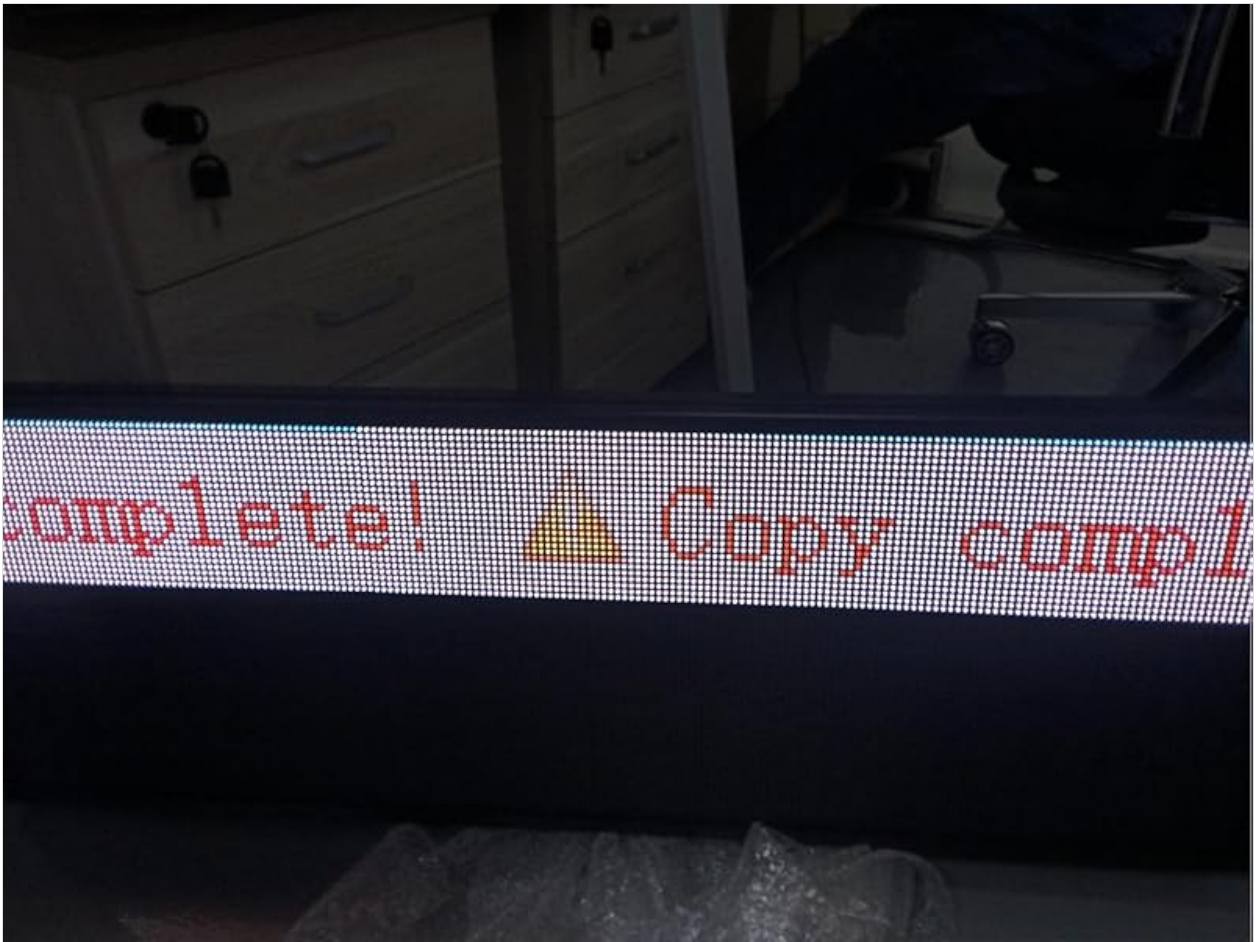


Figure 7.4: Vertical display mode and content transfer methods.



Figure 7.5: Setting display rotation to 90 degrees for vertical orientation.

3. Transfer Content:

- **WiFi Transfer:** Connect your computer or mobile device to the sign's WiFi network (SSID and password usually found on the sign or in documentation). Use the software/app to send the program wirelessly.
- **USB Transfer:** Save your program to a USB flash drive. Insert the USB drive into the sign's USB port. The sign will automatically detect and copy the content. A 'Copy complete!' message will appear on the screen.



Figure 7.6: 'Copy complete!' message displayed on the LED sign after successful USB transfer.

- **Network Cable:** For wired connections, connect an Ethernet cable from your computer to the sign's network port and use the software to transfer.

8. MAINTENANCE

- **Cleaning:** Gently wipe the screen surface with a soft, damp cloth. Avoid abrasive cleaners or excessive moisture. Ensure the sign is powered off before cleaning.
- **Regular Inspection:** Periodically check power cables and mounting hardware for any signs of wear or damage.
- **Environmental Conditions:** While weatherproof, extreme temperatures or prolonged direct sunlight can affect performance. Ensure proper ventilation.

9. TROUBLESHOOTING

| Problem | Possible Cause | Solution |
|--|---|--|
| Sign does not power on. | No power supply; faulty cable; power outlet issue. | Check power cable connection; test power outlet; ensure power is supplied. |
| Display shows incorrect content or blank screen. | No program loaded; incorrect program; communication error. | Re-transfer content via USB or WiFi; verify software settings and device type. |
| Content transfer fails. | Incorrect WiFi password; USB drive not formatted correctly; software error. | Verify WiFi credentials; ensure USB is FAT32 formatted; restart software/sign. |
| Display is dim or flickering. | Power fluctuations; environmental factors; hardware issue. | Ensure stable power supply; check for extreme temperatures; contact support if persistent. |

10. SPECIFICATIONS

| Feature | Detail |
|--------------|---------------|
| Brand | DS ledsign |
| Model Number | DSLED-PH5-5x5 |

| Feature | Detail |
|--------------------|--|
| Product Dimensions | 65 x 33 x 2.4 inches (approx.) |
| Item Weight | 55 pounds (25 Kilograms) |
| Color | RGB Full Color |
| Material Type | Metal, Plastic |
| Pixel Pitch | P5 (5mm) |
| Mounting Type | Ceiling Mount (also suitable for wall mount) |
| Connectivity | WiFi, USB, Network Cable |
| Recommended Uses | Entrance, Exit, Instruction, Lawn, Parking, Promotional, Warning |
| UPC | 774113508271 |

11. WARRANTY AND SUPPORT

DS ledsign products are designed for reliability. For specific warranty details, please refer to the warranty card included with your product or contact DS ledsign customer support directly. General return policies may include a 30-day easy return period from the date of purchase.

For technical assistance, troubleshooting, or further inquiries, please visit the DS ledsign official website or contact their customer support channels. When contacting support, please have your model number (DSLED-PH5-5x5) and purchase information readily available.