

Manuals.plus /

- › EPOMAKER /
- › EPOMAKER HE75 Mag Wireless Gaming Keyboard User Manual

## EPOMAKER HE75

# EPOMAKER HE75 Mag Wireless Gaming Keyboard User Manual

Model: HE75 | Brand: EPOMAKER

## 1. INTRODUCTION AND OVERVIEW

The EPOMAKER HE75 Mag is a high-performance 75% layout wireless gaming keyboard featuring advanced Hall Effect magnetic switches. This innovative design allows for rapid response times and customizable actuation points, providing a superior typing and gaming experience. It supports multiple connectivity options including USB-C wired, 2.4GHz wireless, and Bluetooth, ensuring versatile compatibility across various devices and operating systems.



Figure 1.1: The EPOMAKER HE75 Mag Wireless Gaming Keyboard, showcasing its compact 75% layout and black and purple keycap design.



Figure 1.2: Overview of the EPOMAKER HE75 Mag's core features, including Tri-Mode connectivity, interchangeable knob module, Hall Effect switches, hot-swappable design, 1ms latency, adjustable actuation, gasket-mount structure, and anti-ghosting.

## 2. PACKAGE CONTENTS

Please verify that all items listed below are included in your package:

- EPOMAKER HE75 Mag Wireless Gaming Keyboard
- USB-C to USB-A Cable
- Keycap Puller
- User Manual
- Additional Switches (for knob module replacement)



Figure 2.1: All items included in the EPOMAKER HE75 Mag retail box, including the keyboard, USB cable, keycap puller, and user manual.

Video 2.1: An unboxing demonstration of the EPOMAKER HE75 Mag keyboard, showing the contents and initial presentation.

### 3. SETUP

The EPOMAKER HE75 Mag keyboard offers three connectivity modes: USB-C wired, 2.4GHz wireless, and Bluetooth 5.0. Choose the mode that best suits your needs.

#### 3.1. Connecting via USB-C (Wired Mode)

1. Locate the USB-C port on the keyboard (typically on the top edge).
2. Connect one end of the provided USB-C cable to the keyboard.
3. Connect the other end of the USB-A connector to an available USB port on your computer.
4. The keyboard will be automatically recognized and ready for use.

#### 3.2. Connecting via 2.4GHz Wireless

1. Locate the 2.4GHz USB dongle, usually stored in a magnetic slot on the underside of the keyboard.
2. Plug the USB dongle into an available USB port on your computer.
3. On the keyboard's underside, switch the mode selector to '2.4G'.
4. The keyboard should automatically connect to the dongle.

### 3.3. Connecting via Bluetooth 5.0

1. On the keyboard's underside, switch the mode selector to 'BT'.
2. Press and hold 'Fn' + 'Q', 'W', or 'E' for 3-5 seconds to enter pairing mode (the key's backlight will flash rapidly).
3. On your device (computer, tablet, smartphone), enable Bluetooth and search for new devices.
4. Select 'EPOMAKER HE75 Mag' from the list of available devices to complete pairing.
5. To switch between paired Bluetooth devices, press 'Fn' + 'Q', 'W', or 'E' briefly.

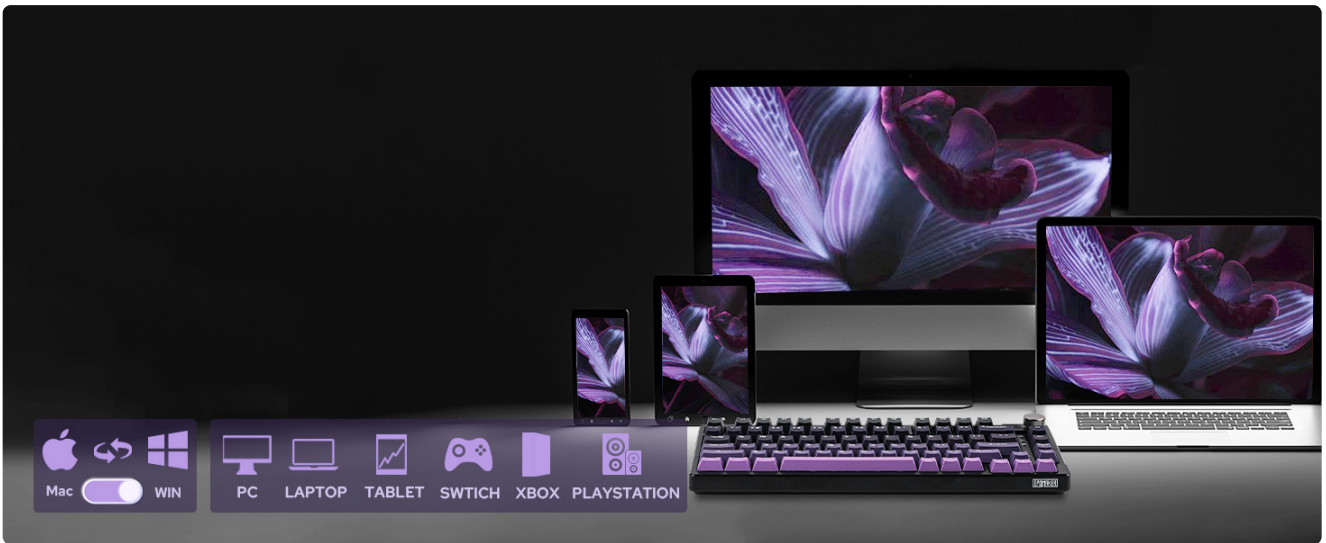


Figure 3.1: The EPOMAKER HE75 Mag keyboard demonstrating its multi-system compatibility with Mac, Windows, PC, Laptop, Tablet, Switch, Xbox, and PlayStation devices.

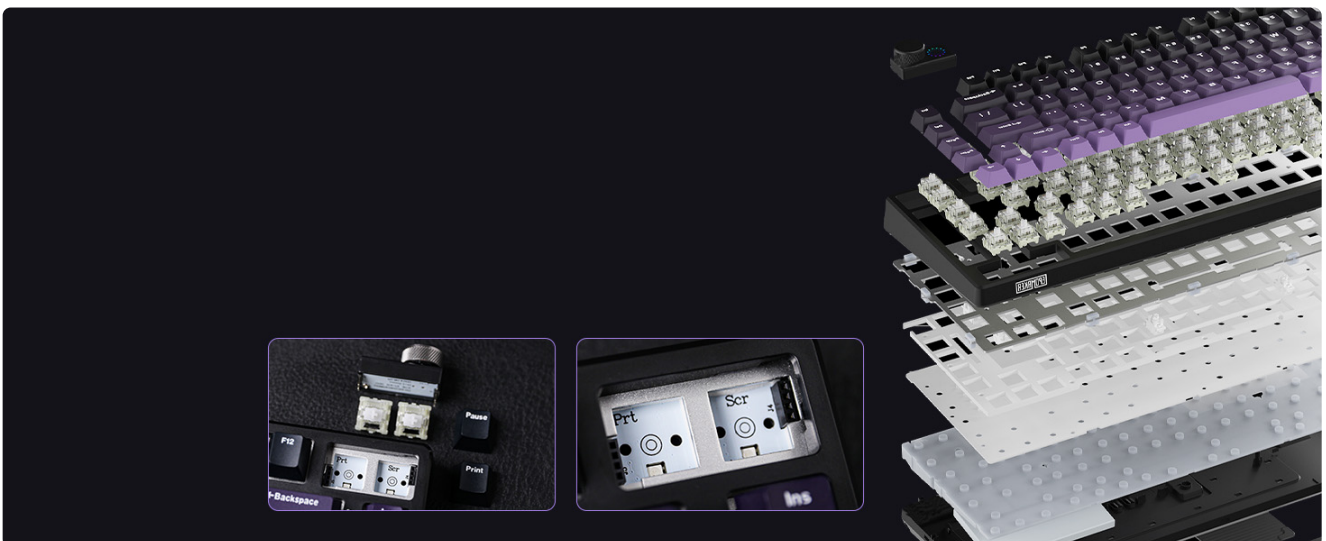


Figure 3.2: The underside of the keyboard, highlighting the storage slot for the 2.4G wireless dongle and the switches for selecting Mac/Win and BT/USB/2.4G modes.

## 4. OPERATING INSTRUCTIONS

### 4.1. Connectivity Modes and Latency

The HE75 Mag offers ultra-low latency for competitive gaming and responsive typing:

- **Wired (USB-C):** 1ms latency
- **2.4GHz Wireless:** 1ms latency
- **Bluetooth 5.0:** 8ms latency



Figure 4.1: Visual representation of the low latency performance across wired, 2.4G wireless, and Bluetooth modes.

## 4.2. RGB Backlighting Control

The keyboard features dynamic RGB backlighting with per-key south-facing LEDs. Use the following key combinations to adjust lighting effects:

- **Fn + \|:** Cycle through RGB lighting effects.
- **Fn + Right Arrow:** Increase brightness.
- **Fn + Left Arrow:** Decrease brightness.
- **Fn + Up Arrow:** Increase animation speed.
- **Fn + Down Arrow:** Decrease animation speed.

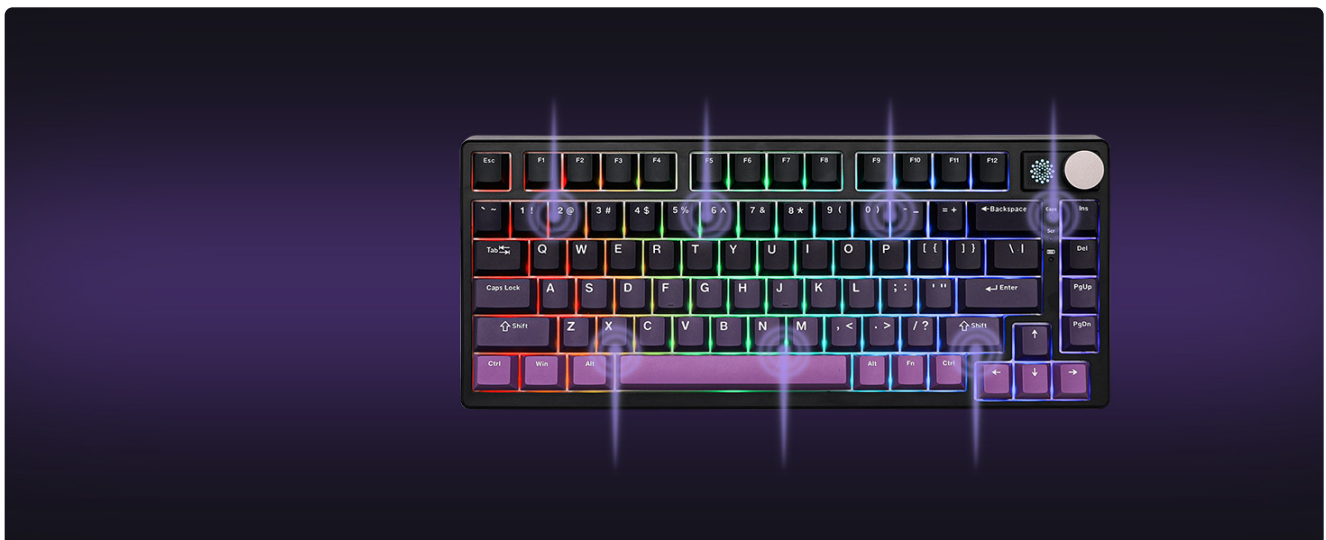


Figure 4.2: The keyboard illuminated with dynamic RGB backlighting, showcasing various color patterns.

Video 4.1: A demonstration of the various RGB lighting effects available on the EPOMAKER HE75 Mag keyboard.

Video 4.2: Another showcase of the RGB light effects on the EPOMAKER HE75 Mag keyboard, highlighting different patterns and colors.

## 4.3. Interchangeable Knob Module

The HE75 Mag features a unique interchangeable knob module. You can easily swap the default rotary knob with two customizable keys (Print Screen and Scroll Lock) included in the package. This allows for flexible control, from volume adjustment to custom macro execution.



Figure 4.3: The interchangeable knob module on the top right of the keyboard, demonstrating how it can be swapped with two individual keys.

Video 4.3: A product show video of the EPOMAKER HE75 Mag, highlighting its features including the interchangeable knob.

#### 4.4. Adjustable Actuation with Hall Effect Switches

The Hall Effect switches allow for precise adjustment of the actuation distance from 0.1mm to 4.0mm. This enables features like Dynamic Key Stroke (DKS), Mod-Tap (MT), and Rapid Trigger, providing unparalleled control and responsiveness for both typing and gaming.

- **Dynamic Key Stroke (DKS):** Assign up to four different actions to a single keypress based on the actuation depth.
- **Mod-Tap (MT):** Perform one action when a key is tapped and another when it's held.
- **Rapid Trigger:** Instantly reset the actuation point upon key release, allowing for extremely fast repeated inputs.

You can switch between four pre-set modes (Comfort, Sensitive, Game, Custom) using 'Fn' + '1'/'2'/'3'/'4'. These settings are stored in the keyboard's on-board memory.



Figure 4.4: A visual representation of the rapid trigger feature, showing how key presses can be registered with minimal travel.

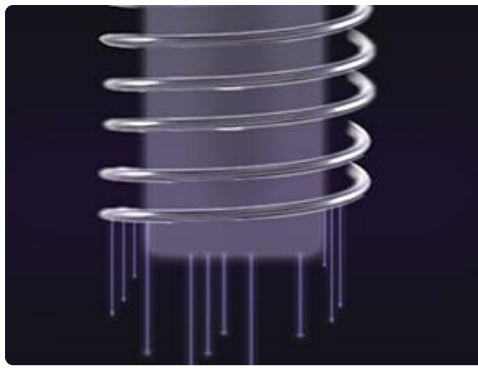


Figure 4.5: A detailed diagram explaining the internal workings of a magnetic switch, showing the magnetic field and sensor.

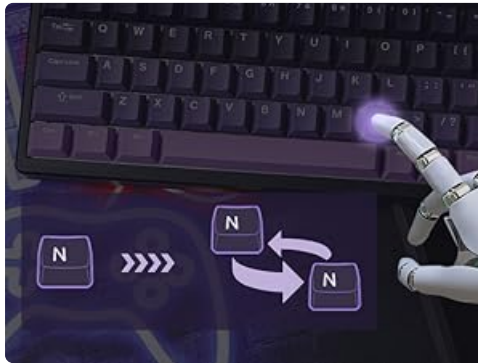


Figure 4.6: An illustration demonstrating the DKS (Dynamic Key Stroke) and MT (Mod-Tap) functionalities, allowing for multiple actions per key.

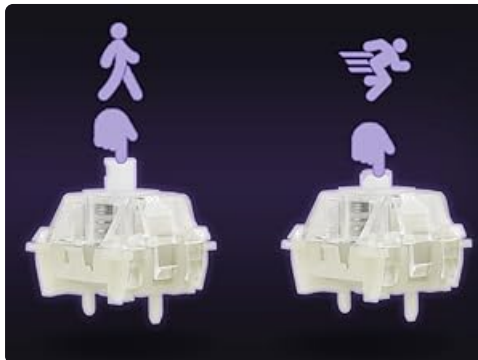


Figure 4.7: A comparison showing how different actuation distances can be set for walking (longer travel) versus running (shorter travel) in gaming scenarios.

Video 4.4: A demonstration of the typing sound produced by the EPOMAKER HE75 Mag keyboard.

## 5. CUSTOMIZATION SOFTWARE

---

For advanced customization of key functions, actuation points, macros, and RGB lighting, download and install the dedicated EPOMAKER software. This software provides a comprehensive interface to fine-tune your keyboard settings to your exact preferences.

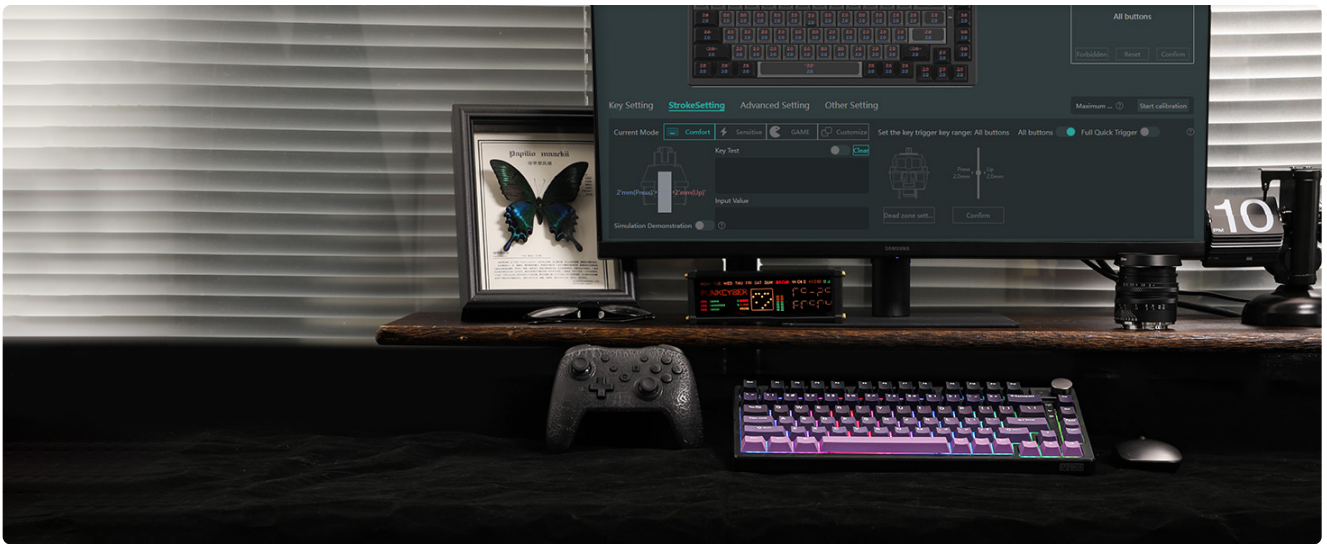


Figure 5.1: The powerful programmable software interface, allowing full key personalization for function, trigger distance, travel, RGB color, and effects.

Video 5.1: A tutorial demonstrating how to calibrate keys using the EPOMAKER software for precise actuation control.

## 6. MAINTENANCE

The EPOMAKER HE75 Mag is designed for durability and ease of maintenance.

### 6.1. Hot-Swappable Switches

The keyboard features hot-swappable Hall Effect switches, allowing you to easily remove and replace switches without soldering. Use the provided switch puller for this process.

### 6.2. PBT Keycaps

The durable PBT keycaps are oil-resistant and designed for longevity. They can be removed using the provided keycap puller for cleaning or replacement.



Figure 6.1: A close-up view of the hot-swappable PCB, showing the ease of removing and replacing switches.

## 7. TROUBLESHOOTING

If you encounter any issues with your EPOMAKER HE75 Mag keyboard, please refer to the following common troubleshooting steps:

- **Keyboard Not Responding:** Ensure the keyboard is properly connected via USB-C, the 2.4G dongle, or Bluetooth. Check the mode switch on the underside of the keyboard.
- **Wireless Connectivity Issues:** For 2.4GHz, try plugging the dongle into a different USB port. For Bluetooth, ensure your device's Bluetooth is enabled and try re-pairing the keyboard. Keep the keyboard within range of your device.
- **RGB Lights Not Working:** Check brightness settings using Fn + Arrow keys. Ensure the keyboard has sufficient battery charge or is connected via USB.
- **Keys Not Registering / Double Typing:** This might indicate a need for switch calibration. Refer to Section 5 for instructions on using the customization software to calibrate keys.
- **Battery Life:** The 4000mAh battery provides approximately 120 hours of endurance with the backlight turned off. If battery life is shorter than expected, ensure the backlight is not constantly on high brightness and that the keyboard enters sleep mode when inactive.



Figure 7.1: The keyboard displaying its battery level indicator, showing a full charge.

## 8. SPECIFICATIONS

---

<b>Feature</b>	<b>Specification</b>
Model	HE75
Layout	75% ANSI US (81 keys)
Switches	Hall Effect Magnetic Switches (Hot-Swappable)
Actuation Distance	Adjustable from 0.1mm to 4.0mm
Connectivity	USB-C Wired, 2.4GHz Wireless, Bluetooth 5.0
Latency	1ms (USB/2.4Ghz), 8ms (Bluetooth)
Keycaps	PBT Double Shot
Backlighting	RGB (South-facing LEDs)
Battery Capacity	4000mAh
Battery Life	Approx. 120 hours (backlight off)
Weight	3.03 pounds
Dimensions	16.1 x 7.64 x 2.44 inches

# GATERON MAGNETIC WHITE SWITCH

Adjustable Actuation Distance <b>0.1-4.0mm</b>	Lubed or Not <b>Lubed in Factory</b>
Fastest Trigger Key Travel <b>0.1mm</b>	Full travel <b>4.00mm</b>
Force <b>30 gf</b>	Bottom-out Force <b>47±5 gf</b>
Initial Magnetic Flux <b>102Gs</b>	End Magnetic Flux <b>905Gs</b>
Spring <b>15mm</b>	Switch Lifetime <b>100 million times</b>

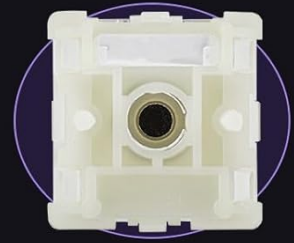
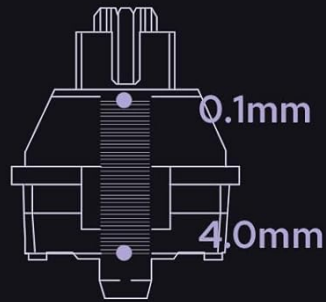


Figure 8.1: Detailed specifications for the Gateron Magnetic White Switches, including actuation distance, force, and lifetime.



Figure 8.2: Technical drawing showing the dimensions (length, width, height) and weight of the EPOMAKER HE75 Mag keyboard.

## 9. WARRANTY AND SUPPORT

---

For warranty information and detailed support, please refer to the official EPOMAKER website or contact their customer service directly. Keep your purchase receipt for warranty claims.

### **EPOMAKER Support:**

Website: [www.epomaker.com](http://www.epomaker.com)

Email: [support@epomaker.com](mailto:support@epomaker.com)