

Protmex PTX-DUA-A

Protmex 2-in-1 Cordless Pole Saw and Mini Chainsaw (Model: PTX-DUA-A)

User Instruction Manual

1. IMPORTANT SAFETY INSTRUCTIONS

Read all safety warnings, instructions, illustrations, and specifications provided with this power tool. Failure to follow all instructions listed below may result in electric shock, fire, and/or serious injury.

- Always wear appropriate personal protective equipment (PPE) including safety glasses, gloves, and hearing protection.
- Keep hands and feet away from the chain when the tool is operating.
- Ensure the battery is removed before making any adjustments, changing accessories, or storing the tool.
- Do not operate the tool in explosive atmospheres, such as in the presence of flammable liquids, gases, or dust.
- Keep children and bystanders away while operating a power tool. Distractions can cause you to lose control.
- Maintain proper footing and balance at all times. Do not overreach.
- Use the correct tool for your application. Do not force the tool.
- Store idle tools out of reach of children and do not allow persons unfamiliar with the power tool or these instructions to operate the power tool.
- Always inspect the tool for damage before use. Do not use if damaged.

2. PRODUCT OVERVIEW

The Protmex PTX-DUA-A is a versatile 2-in-1 cordless tool designed for efficient tree pruning and wood cutting. It can be used as a compact mini chainsaw or extended into a pole saw for reaching higher branches.



Figure 1: The Protmex 2-in-1 Cordless Pole Saw and Mini Chainsaw, shown with its various components including the main unit, extension pole, two batteries, charger, safety glasses, and gloves.

Package Contents:

- Chainsaw Unit (6-inch)
- Extension Pole
- 2 x 21V 4000mAh Lithium-Ion Batteries
- Battery Charger
- Safety Glasses
- Work Gloves
- User Manual

3. SETUP AND ASSEMBLY

3.1 Battery Charging

Before first use, fully charge both batteries. Insert the battery into the charger and plug the charger into a standard power outlet. The indicator light on the charger will show the charging status.



Figure 2: The included 21V 4.0Ah Lithium-Ion batteries and charger. Ensure batteries are fully charged before use for optimal performance.

3.2 Chain Installation (if required)

The chain may come pre-installed. If not, or if replacing the chain, follow these steps:

1. Turn the green cover counter-clockwise to remove it, then take off the cover, guide bar, and old chain (if replacing).
2. Push the pin to the RIGHT to lock it.
3. Place the guide bar and new chain on the saw, ensuring the pin fits through the guide bar hole. Check the chain alignment.
4. Press the guide plate near the pin, return the pin to its original position; the chain will self-tension.
5. Reinstall the covers, ensuring everything is secure.
6. Tighten the green cover clockwise UNTIL IT CAN'T TURN FURTHER.

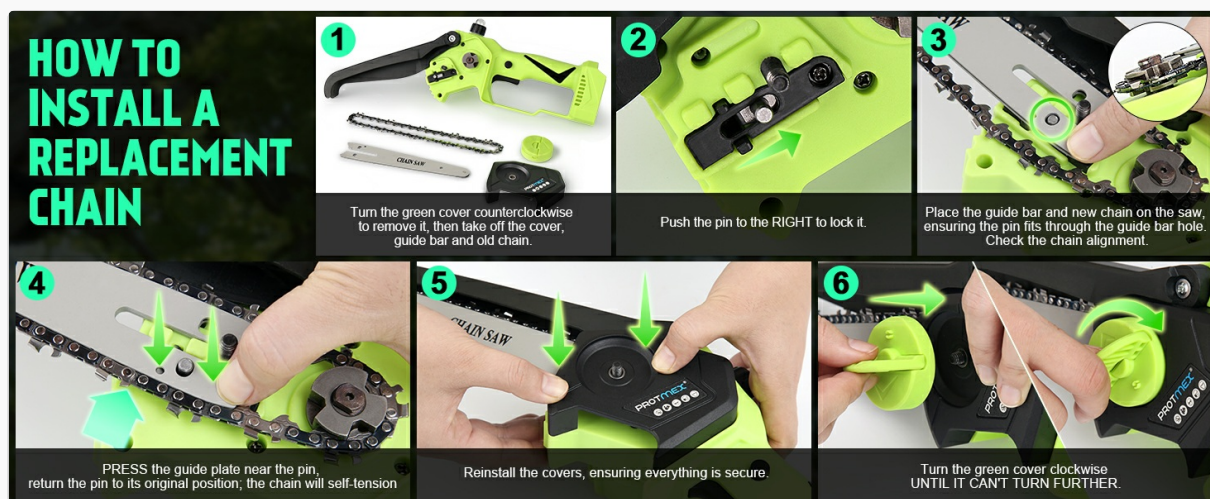


Figure 3: Visual instructions for installing or replacing the chainsaw chain. Proper installation is crucial for safe and effective operation.

3.3 Assembling the Pole Saw Configuration

To convert the mini chainsaw into a pole saw:

1. Attach the chainsaw head to the extension pole. Ensure it clicks securely into place.
2. Adjust the pole height to your desired working length. The pole is retractable and can extend to provide a maximum working length of approximately 15 feet (based on a 6ft person holding the pole at shoulder level).

3. Insert a charged battery into the battery slot on the handle.



Figure 4: Assembly sequence for the pole saw configuration. This image illustrates attaching the chainsaw head, adjusting the pole, and inserting the battery.

4. OPERATING INSTRUCTIONS

4.1 General Operation

Once assembled and with a charged battery, press the safety button and then the trigger to start the chainsaw. The tool features stepless speed control for flexible operation.



Figure 5: The 2-in-1 tool in action, demonstrating its use as both a pole saw for tree pruning and a mini chainsaw for cutting smaller branches.

4.2 Cutting Angles

The chainsaw head offers adjustable cutting angles from 0° to 180°, allowing for versatile cutting in various positions.



Figure 6: The adjustment knob for tool-free chain tensioning and the visual representation of the 0°-180° adjustable cutting angles.

4.3 Safety Features

- **Safety Button:** Prevents accidental activation. Must be pressed before the trigger.
- **Wood Chip Guard:** Blocks debris during operation.
- **Sponge Handle:** Provides shockproof grip for comfort and control.
- **Strap Design:** For safer operation, especially when using as a pole saw.



Figure 7: Overview of the integrated safety features designed to enhance user protection and operational stability.

5. MAINTENANCE

5.1 Chain Lubrication

The chainsaw features an auto lubrication system. Ensure the oil reservoir is filled with appropriate chainsaw bar and chain oil before each use. This system provides continuous lubrication for smooth cutting and extended chain life.



Figure 8: Demonstrating the auto oil system. Regularly check and refill the oil reservoir to ensure proper chain lubrication.

5.2 Chain Tension Adjustment

Proper chain tension is critical for safe and efficient operation. Check chain tension frequently, especially during initial use and after prolonged cutting.

1. If loose, turn the cover counter-clockwise to slightly loosen (avoid over-loosening).
2. Move the guide bar up/down to self-tension. If not tight, check "HOW TO INSTALL CHAIN" for proper positioning.
3. Tighten the green cover clockwise UNTIL IT CAN'T TURN FURTHER. If the chain loosens quickly, it wasn't tightened properly.



Figure 9: Visual instructions for adjusting the chain tension. Correct tension prevents chain derailment and ensures optimal cutting performance.

5.3 Cleaning and Storage

- After each use, remove the battery and clean the tool of sawdust and debris.
- Use a soft brush or cloth. Do not use harsh chemicals.
- Store the tool in a dry, secure place, out of reach of children.

- Ensure the chain is covered with its protective sheath during storage.

6. TROUBLESHOOTING

Problem	Possible Cause	Solution
Tool does not start	Battery not charged or improperly inserted; Safety button not pressed; Faulty battery or tool.	Ensure battery is fully charged and correctly inserted. Press the safety button before the trigger. Test with a different charged battery if available. Contact support if problem persists.
Chain stops or cuts poorly	Chain tension incorrect; Chain dull; Insufficient lubrication; Battery low.	Adjust chain tension (refer to Section 5.2). Sharpen or replace chain. Refill oil reservoir. Recharge or replace battery.
Excessive vibration	Loose chain; Damaged chain or guide bar.	Check and adjust chain tension. Inspect chain and guide bar for damage and replace if necessary.
Oil leakage	Overfilled oil reservoir; Damaged oil cap or seal.	Do not overfill the oil reservoir. Ensure oil cap is securely tightened. Inspect for damage and contact support if leakage continues.

7. SPECIFICATIONS

Feature	Detail
Model Number	PTX-DUA-A
Brand	Protmex
Power Source	Battery Powered (Cordless)
Battery Type	21V 4000mAh (4.0Ah) Lithium-Ion
Chain Length	6 inches (15 cm)
Chain Speed	33 ft/s
Motor Type	Brushless Motor
Adjustable Cutting Angles	0° - 180°
Max Working Length (Pole Saw)	Up to 15 feet (approximate, depending on user height)
Weight (Mini Chainsaw)	Approximately 3.3 lbs (1.5 kg)
Total Item Weight	10.88 pounds (packaging/full kit)
Lubrication System	Automatic

8. WARRANTY AND SUPPORT

Protmex products are designed for reliability. For warranty information, technical support, or assistance

with parts, please refer to the contact information provided in your product packaging or visit the official Protmex website.





The manufacturer offers dedicated support and assistance. If you encounter any issues, please reach out to customer service for solutions.

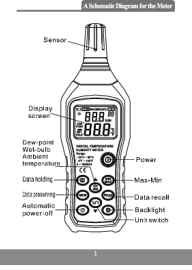



Protmex is committed to providing quality products and customer satisfaction.

© 2025 Protmex. All rights reserved.

Related Documents - PTX-DUA-A

<div><p>PT6708 Calibration method</p><p>1. In the display screen, first press the left "F" and "SET" keys at the same time, and then press the green button without delay. When the LCD screen is lit up and returns all keys to enter the debugging mode.</p></div> <div></div>	<p>Protmex PT6708 Digital Sound Level Meter Calibration Guide</p> <p>Step-by-step instructions for calibrating the Protmex PT6708 Digital Sound Level Meter, including entering debugging mode and performing A/C weighted measurements.</p>
<div><p>PT20C Weather Station Clock WWVB RCC/NO RCC Version User Manual</p></div> <div></div>	<p>PT20C Weather Station Clock User Manual</p> <p>User manual for the Protmex PT20C Weather Station Clock, detailing its features, setup, operation, and functions including temperature, humidity, air pressure, weather forecast, and alarm settings. Covers RCC and WWVB versions.</p>
<div><p>PT20C Weather Station Clock WWVB RCC / NO RCC Version User Manual</p></div> <div></div>	<p>PT20C Weather Station Clock User Manual</p> <p>User manual for the Protmex PT20C Weather Station Clock, covering features, operation, settings, specifications, and troubleshooting for both WWVB RCC and NO RCC versions.</p>
<div><p>USER'S MANUAL Temperature & Humidity Meter</p><p>142MM</p></div>	<p>Protmex PM6508 Digital Temperature & Humidity Meter User Manual - Environmental Monitoring</p> <p>Comprehensive user manual for the Protmex PM6508 digital temperature and humidity meter. This guide details operation, features, and specifications for measuring ambient, dew point, and wet bulb temperatures, including MIN/MAX recording, data hold, and data storage. Ideal for indoor/outdoor environmental monitoring.</p>

	<p>Protmex PT6508 Digital Temperature Humidity Meter User Manual</p> <p>Comprehensive user manual for the Protmex PT6508 Digital Temperature Humidity Meter, covering operation, display screen, maintenance, and technical specifications for measuring ambient temperature, dew point, and wet bulb.</p>
	<p>Protmex HT607 Temperature & Humidity Meter User Manual</p> <p>Comprehensive user manual for the Protmex HT607 Temperature & Humidity Meter, detailing its features, operation, specifications, and maintenance. Learn how to measure ambient temperature, humidity, dew point, and wet bulb temperature with this high-precision digital hygrometer.</p>