

Manuals+

[Q & A](#) | [Deep Search](#) | [Upload](#)

[manuals.plus](#) /

› [usogood](#) /

› [usogood TC30 4K 48MP Trail Camera Instruction Manual](#)

usogood TC30

usogood TC30 4K 48MP Trail Camera Instruction Manual

Model: TC30 | Brand: usogood

INTRODUCTION

This manual provides detailed instructions for the setup, operation, and maintenance of your usogood TC30 4K 48MP Trail Camera. Designed for wildlife monitoring and outdoor security, this camera captures high-resolution photos and videos with advanced night vision and motion detection capabilities. Please read this manual thoroughly before using the camera to ensure optimal performance and longevity.

SAFETY INFORMATION

- Do not immerse the camera in water, despite its IP66 rating, to prevent damage.
- Use only specified battery types (AA batteries). Ensure correct polarity during installation.
- Keep the camera away from extreme temperatures and direct sunlight for prolonged periods.
- Handle the lens and screen with care to avoid scratches.
- Keep out of reach of children.

PACKAGE CONTENTS

Verify that all items are present in your package:

- usogood TC30 Trail Camera (1)
- 32GB Memory Card (1)
- AA Batteries (8)
- Mounting Belt (1)
- USB Cable (1)
- Instruction Manual (1)

4K 30fps Smoothly Video

Clear and smooth video providing a wonderful visual experience



HD Video



Smooth playback



LCD screen



15.8°F



13:46:15

2023/08/23

Figure 1: TC30 Trail Camera with included accessories.

PRODUCT OVERVIEW

Familiarize yourself with the main components of your usogood TC30 Trail Camera.



Figure 2: Front view of the TC30 Trail Camera.

Key Components:

- **Main Lens:** Captures photos and videos.
- **Infrared LEDs (36pcs 850nm):** Provide illumination for night vision without visible flash.
- **PIR Motion Sensors (120° detection):** Detects movement to trigger recording.
- **2.0" LCD Screen:** For menu navigation and viewing captured media.
- **Control Buttons:** MENU, UP, DOWN, OK, MODE for camera settings.
- **Mode Switch:** OFF, TEST, ON positions.
- **Battery Compartment:** Holds 8 AA batteries.
- **SD Card Slot:** For inserting the memory card.
- **USB Port:** For connecting to a computer.
- **External Power Port (DC 6V/2.0A):** For optional external power supply.

SETUP

1. Battery Installation

1. Open the camera's latch on the right side and open the front cover.
2. Locate the battery compartment at the bottom of the camera.
3. Insert 8 new AA batteries, paying close attention to the positive (+) and negative (-) indicators inside the compartment to ensure correct polarity. The camera can also operate with 4 batteries installed on one side.
4. Close the battery compartment cover securely.



Figure 3: Battery installation diagram.

2. SD Card Installation

1. With the front cover open, locate the SD card slot on the side of the camera.
2. Insert the provided 32GB SD card into the slot with the metal contacts facing the back of the camera until it clicks into place.
3. To remove, gently push the card in until it clicks, then release, and it will spring out.

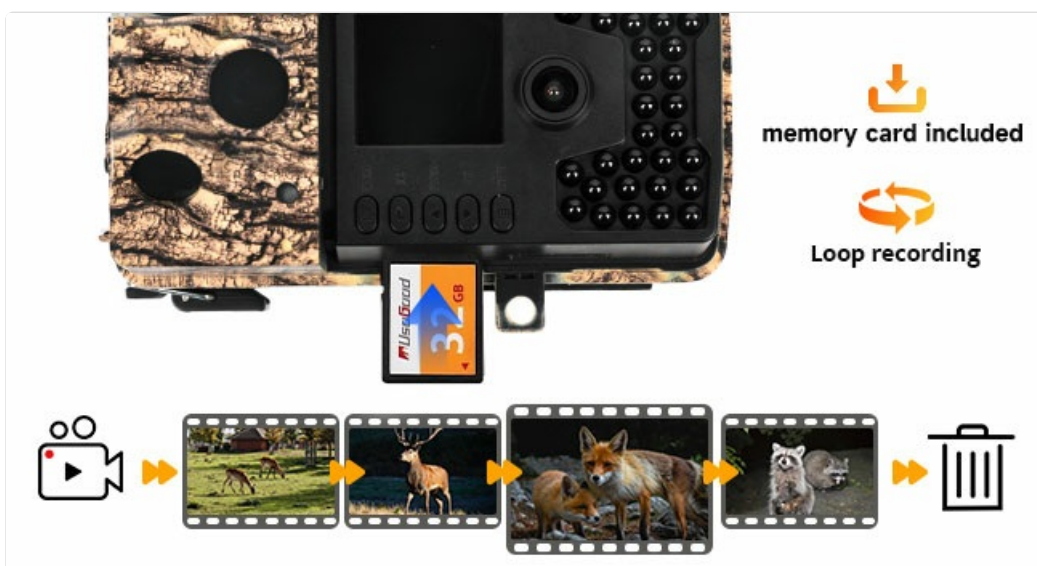


Figure 4: SD card insertion.

3. Mounting the Camera

1. Use the provided mounting belt to secure the camera to a tree or pole. Thread the belt through the slots on the back

of the camera.

2. Adjust the belt tightly to ensure the camera is stable and does not move.
3. Position the camera to cover the desired monitoring area, ensuring no obstructions block the view or motion sensors.



Figure 5: Camera mounted on a tree.

4. Powering On and Initial Settings

1. Slide the mode switch from **OFF** to **TEST**. The screen will turn on.
2. Use the **MENU** button to access settings. Navigate with **UP** and **DOWN** arrows, and confirm with **OK**.
3. Set the correct Date and Time first.
4. Configure desired settings such as photo resolution (48MP), video resolution (4K), capture mode (photo, video, or photo+video), trigger interval, and PIR sensitivity.
5. Once settings are complete, slide the switch from **TEST** to **OFF**, then to **ON** to activate the camera for monitoring. The screen will turn off, and the camera will enter monitoring mode.

OPERATING INSTRUCTIONS

Monitoring Mode

When the camera is in the **ON** position, it will automatically detect motion within its 120° detection angle and trigger recording based on your settings. The 0.3-second trigger speed ensures minimal delay in capturing events.



Figure 6: 120° PIR Wide Angle Detection.

TC30 Trail Camera Upgrade the Performance with the Same Price

Upgrade Stage	Resolution & FPS	Quality Improvement	File Size Reduction
FIRST UPGRADE(2023)	24MP 1080P	Photo and Video Quality Improvement	10%
SECOND UPGRADE (2024)	36MP 2K 30FPS	Photo and Video Quality Improvement	20%
THIRD UPGRADE (2025)	48MP 4K	Photo and Video Quality Improvement	50%

MAIN CONTROL CHIP UP GRADE

Figure 7: 0.3s Fast Trigger Speed.

Night Vision

The camera is equipped with 36pcs 850nm infrared LEDs for clear night vision. These LEDs provide moderate fill light, ensuring detailed images and videos without overexposure or startling wildlife. Night vision activates automatically in low-light conditions.

Customize Target Recording Time

The camera will only work during the set period.

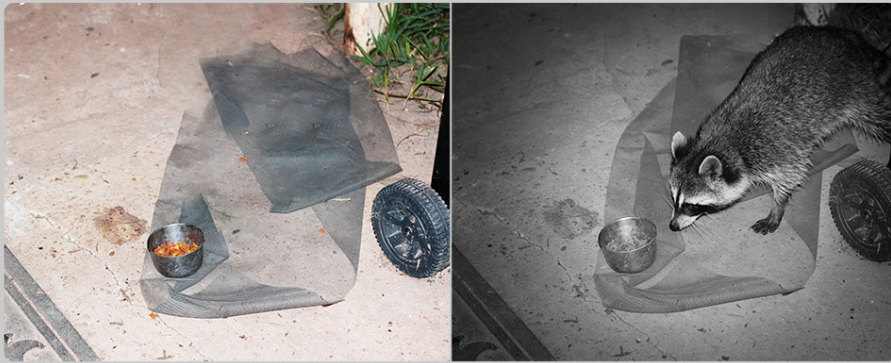


Figure 8: Night Vision Performance.

Viewing Captured Media

1. **On Camera:** Slide the mode switch to **TEST**. Use the **MODE** button to switch between photo and video playback. Use **UP** and **DOWN** arrows to browse files.
2. **On Computer:** Connect the camera to your computer using the provided USB cable, or remove the SD card and insert it into a card reader connected to your computer. The camera or SD card will appear as a removable disk, allowing you to access and transfer files.



Figure 9: Viewing on camera screen.

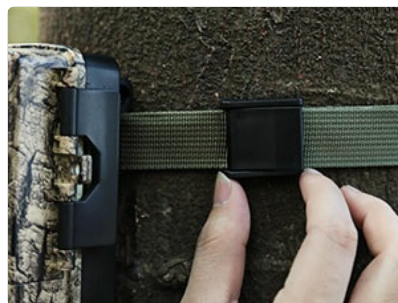


Figure 10: Transferring files to a computer.

MAINTENANCE

- **Cleaning:** Use a soft, dry cloth to clean the camera lens and housing. Avoid abrasive cleaners.
- **Battery Replacement:** Replace all 8 AA batteries when the low battery indicator appears on the screen or when performance degrades.
- **SD Card Management:** Regularly back up important files and format the SD card in the camera's menu to ensure optimal recording performance and prevent data corruption.

- **Waterproof Protection:** The camera has an IP66 waterproof rating, protecting it from dust and strong jets of water. Ensure all latches are securely closed to maintain its waterproof integrity, especially after accessing the battery or SD card compartments.



Figure 11: IP66 Waterproof Design.

TROUBLESHOOTING

Problem	Possible Cause	Solution
Camera does not power on.	Batteries are low or incorrectly installed. Mode switch is OFF.	Replace batteries or ensure correct polarity. Slide switch to TEST or ON.
Poor night vision images.	IR LEDs obstructed. Camera too far from subject.	Clear any obstructions. Reposition camera closer to the target area (within 65ft).
Camera not recording motion.	PIR sensitivity too low. SD card full or corrupted.	Increase PIR sensitivity in settings. Format or replace SD card. Ensure camera is in ON mode.
Date/Time is incorrect.	Not set or batteries removed for too long.	Re-enter Date/Time in TEST mode settings.
Files cannot be viewed on computer.	USB connection issue. SD card not properly inserted in reader.	Ensure USB cable is securely connected. Try a different USB port or card reader.

SPECIFICATIONS

Feature	Detail
Model	TC30
Effective Still Resolution	48 Megapixels
Video Capture Resolution	4K (30fps)

Feature	Detail
Detection Angle	120 Degrees
Trigger Speed	0.3 Seconds
Night Vision Range	65 Feet (20 meters)
IR LEDs	36pcs 850nm
Waterproof Rating	IP66
Storage	Micro SD Card (up to 128GB, 32GB included)
Power Source	8x AA Batteries (included) or DC 6V/2.0A external power supply (not included)
Dimensions (L x W x H)	8.07 x 5.19 x 4 inches
Weight	1.59 pounds

WARRANTY AND SUPPORT

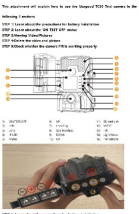



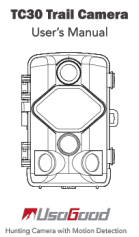

usogood is committed to providing high-quality products and excellent customer service. Your usogood TC30 Trail Camera comes with a warranty and dedicated after-sales support. For any inquiries, technical assistance, or warranty claims, please contact our customer service team. We aim to resolve any issues within 48 hours.

Customer Service Email: support@usogood.co



Figure 12: Customer Support Contact Information.



	<p>Usogood TC30 Trail Camera User Guide</p> <p>A guide on how to use the Usogood TC30 Trail Camera, covering battery installation, device status, viewing media, deleting files, and checking PIR functionality.</p>
	<p>Usogood DL502 Trail Camera User Manual</p> <p>Comprehensive user manual for the Usogood DL502 Trail Camera, covering setup, functions, WiFi connection, app control, and troubleshooting. Learn how to install and operate your trail camera for wildlife monitoring.</p>
	<p>Usogood TC30 Trail Camera User Manual</p> <p>User manual for the Usogood TC30 Trail Camera, covering package contents, features, setup, installation, main functions, technical specifications, service, and warranty.</p>
	<p>Usogood TC30 Trail Camera User Manual</p> <p>Comprehensive user manual for the Usogood TC30 Trail Camera, detailing setup, features, technical specifications, and support information.</p>
	<p>TC30 Trail Camera User Manual - Usogood Hunting Camera</p> <p>Detailed user manual for the Usogood TC30 Trail Camera. This guide covers setup, operation, modes, memory card usage, mounting, connections, and technical specifications for this motion-activated wildlife camera.</p>
	<p>Usogood RS20 Solar Integrated Hunting Camera Instruction Manual</p> <p>Detailed instruction manual for the Usogood RS20 solar-integrated hunting camera, covering setup, operation, features, and troubleshooting for wildlife monitoring and security.</p>



[\[pdf\]](#) User Manual

DOWNLOAD No Wifi Trail Camera TC30 usogood Usogood Instruction manual v 1688379862 cdn shopify s files 1 0721 5520 1820 |||

1 We are ready to help you solve your problem, please contact our support team to get 1 year free replacement and lifetime technical support Please contact email: support usogood.co Wir sind bereit, Ihnen zu helfen, Ihr Problem zu lösen, kontaktieren Sie bitte unser Support-Team, um 1 Jahr kosten...

lang:en score:51 filesize: 7.52 M page_count: 60 document date: 2022-05-09



[Usogood TC30 Trail Camera User Manual - Setup, Operation, and Testing Guide](#)

Comprehensive user manual for the Usogood TC30 Trail Camera. Learn how to activate your warranty, watch operation videos, get the electronic manual, understand the ON-TEST-OFF modes, perform pre-installation testing, and set up the camera for optimal performance. Includes guidance on mounting height and PIR settings.

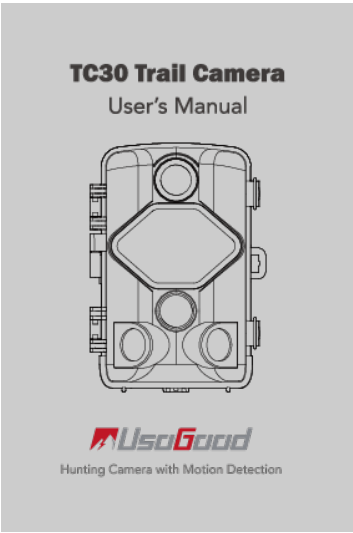
lang:en score:33 filesize: 18.49 M page_count: 28 document date: 2024-03-05



[Usogood TC30 Trail Camera User Manual](#)

User manual for the Usogood TC30 Trail Camera, covering package contents, features, setup, installation, main functions, technical specifications, service, and warranty.

lang:en score:22 filesize: 4.7 M page_count: 14 document date: 2023-07-03

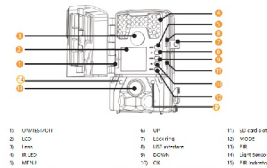


[TC30 Trail Camera User Manual - UsoGood Hunting Camera](#)

Detailed user manual for the UsoGood TC30 Trail Camera. This guide covers setup, operation, modes, memory card usage, mounting, connections, and technical specifications for this motion-activated wildlife camera.

lang:en score:17 filesize: 3.49 M page_count: 13 document date: 2020-09-09

This attachment will explain how to use the UsoGood TC30 Trail camera in the following 5 sections
STEP 1: Learn about the precautions for battery installation
STEP 2: Learn about the VHS-TEST-ON/OFF menu
STEP 3: Viewing Video/Pictures
STEP 4: Delete the video and picture
STEP 5: Check whether the camera PIR is working properly



STEP 1: Learn about the precautions for battery installation
Please read the 1-5 battery instructions on the endpapers.
Note: use 4 AAAs (1.5V)
If you use the 7-battery compartment, only use the 7-battery compartment.

[pdf]

Learn about the precautions for battery installation STEP 2 This attachment will explain how to use
Usogood TC30 Trial camera in following 5 sections 1 battery 91zPUYQ7jwL m media amazon images I |||

...

lang:en score:12 filesize: 816.53 K page_count: 3 document date: 2024-08-28