

manuals.plus /

- › [Matbip](#) /
- › [Matbip Wireless Controller User Manual](#)

## Matbip B0DM4N4JX3

# Matbip Wireless Controller User Manual

Model: B0DM4N4JX3

### PRODUCT OVERVIEW

The Matbip Wireless Controller is designed for an enhanced gaming experience across multiple platforms, including PS4, PS4 Pro, PS4 Slim, and PC. It features advanced wireless technology, dual vibration motors, a 6-axis gyro sensor, and customizable macro programming for precise and immersive gameplay.



Front view of the Matbip Wireless Controller, showcasing its ergonomic design and button layout.

## Key Features:

- **Wide Compatibility:** Compatible with PS4, PS4 Pro, PS4 Slim, and PC.
- **Dual Vibration:** Built-in dual vibration motors provide immersive tactile feedback.
- **6-Axis Gyro Sensor:** Offers precise motion control for enhanced gameplay.
- **Turbo Function:** Enables continuous shooting for a competitive edge.
- **Macro Programming:** Customizable back buttons (M1/M2) for personalized gameplay styles.
- **Long Battery Life:** 600mAh rechargeable battery provides 8-10 hours of gaming time.
- **Type-C Charging:** Modern and convenient Type-C charging port.
- **Integrated Audio:** Features a 3.5mm audio jack and built-in speaker.

## PACKAGE CONTENTS

---

Please verify that all items are present in the package before proceeding with setup.

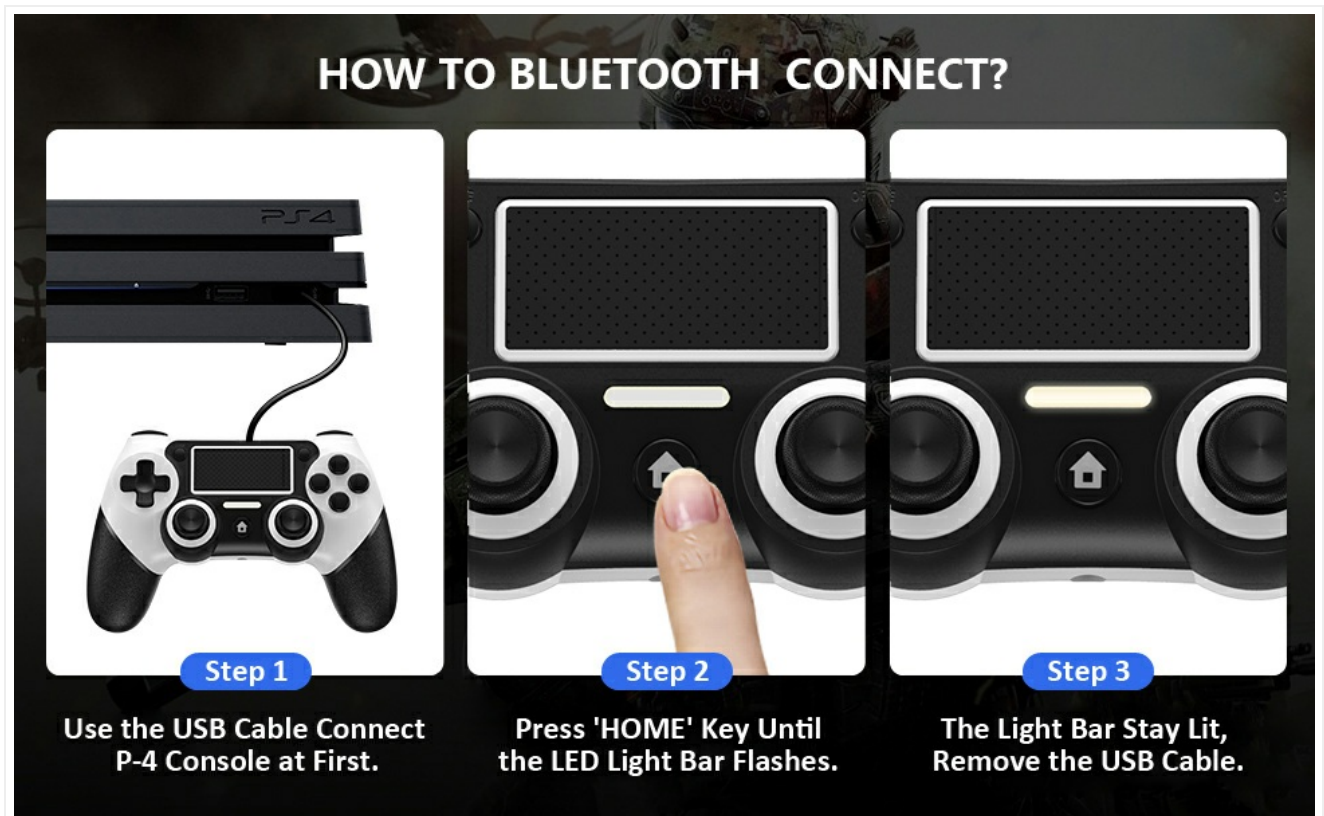
- 1x Matbip Wireless Controller (Black/White)
- 1x Type-C Charge Cable
- 1x User Manual

## SETUP GUIDE

---

### Initial Connection to PS4/PS4 Pro/PS4 Slim:

1. Ensure your PS4 console is powered on.
2. Connect the controller to your PS4 console using the provided Type-C USB cable. This is required for the first-time pairing.



Visual guide for connecting the controller to a PS4 console using the USB cable.

3. Press the "HOME" button on the controller. The LED light bar will flash.
4. Once the LED light bar stays lit, the controller is successfully paired. You can now remove the USB cable and use the controller wirelessly.

### Connecting to PC:

The controller can be connected to a PC via USB cable or Bluetooth.

- **USB Connection:** Connect the controller to your PC using the Type-C USB cable. The PC should automatically detect and install the necessary drivers.
- **Bluetooth Connection:**
  - a. Ensure your PC has Bluetooth enabled.
  - b. On your PC, go to Bluetooth settings and add a new device.
  - c. On the controller, press and hold the "SHARE" button and the "HOME" button simultaneously until the light bar

starts flashing rapidly. This puts the controller into pairing mode.

- d. Select the controller from the list of available Bluetooth devices on your PC and complete the pairing process.

## BLUETOOTH FUNCTION

Built-in advanced wireless chip, maximum transmission distance up to 10m, no latency, more freedom of operation.





The controller utilizes advanced wireless Bluetooth technology for a stable connection up to 10 meters (33 feet).

## OPERATING INSTRUCTIONS

---

### Button Layout and Functions:



Detailed diagram showing the front and back button layout of the Matbip Wireless Controller.

- **Share Button:** Used for sharing gameplay content.
- **Option Button:** Accesses in-game menus and options.
- **Touchpad:** Clickable and sensitive touchpad for interactive gameplay.
- **L1/L2 & R1/R2 Triggers:** Shoulder buttons and triggers for various in-game actions.
- **D-Pad:** Directional pad for precise movement.
- **Action Buttons (Triangle, Circle, Cross, Square):** Standard PlayStation action buttons.
- **Left/Right Sticks:** 360° analog sticks for movement and camera control.
- **Home Button:** Returns to the console's home screen.
- **LED Light Bar:** Indicates player number, charging status, and in-game information.
- **Reset Button:** Small button on the back for resetting the controller (requires a pin).
- **Stereo Headset Jack:** 3.5mm port for connecting headphones or headsets.
- **M1/M2 Programming Keys:** Customizable back buttons.

## Macro Programming (M1/M2 Buttons):

The M1 and M2 back buttons can be programmed to replicate other button presses, allowing for custom gameplay styles and complex commands with a single press.



Illustration of the M1 and M2 programmable back buttons, allowing customization of up to 16 button combinations.

Refer to the specific programming instructions in the included user manual for detailed steps on how to set up macro functions.

## Turbo Function:

The Turbo function allows for continuous rapid firing of a button. This is particularly useful in shooting games.



Visual representation of the Turbo function, dual vibration, and 6-axis motion sensor capabilities.

To activate/deactivate Turbo for a specific button, press and hold the "Turbo" button (if present, or a designated combination) and then press the desired action button.

### **Charging the Controller:**

Connect the provided Type-C USB cable to the controller's charging port and the other end to a USB power source (e.g., PS4 console, PC, or USB wall adapter).



Information on battery life: 8-10 hours working time, 1-2 hours charging time.

- **Charging Time:** Approximately 1-2 hours.
- **Working Time:** Up to 8-10 hours on a full charge.
- **Standby Time:** Up to 30 days.

## MAINTENANCE

---

- **Cleaning:** Use a soft, dry cloth to clean the controller. Do not use abrasive cleaners or solvents.
- **Storage:** Store the controller in a cool, dry place away from direct sunlight and extreme temperatures.
- **Battery Care:** To prolong battery life, avoid fully discharging the controller frequently. Charge it regularly, even if not in use for extended periods.
- **Avoid Drops:** Protect the controller from drops and impacts, which can damage internal components.

## TROUBLESHOOTING

---

Problem	Possible Cause	Solution
Controller does not connect wirelessly.	Not paired correctly; low battery; interference.	<ol style="list-style-type: none"><li>1. Ensure the controller is fully charged.</li><li>2. Re-pair the controller using the USB cable for the first connection.</li><li>3. Reset the controller using the small button on the back.</li><li>4. Move closer to the console/PC to reduce interference.</li></ol>
Controller not charging.	Faulty cable; faulty charging port; power source issue.	<ol style="list-style-type: none"><li>1. Try a different Type-C USB cable.</li><li>2. Try a different USB power source (e.g., another USB port on console/PC, wall adapter).</li><li>3. Ensure the cable is securely connected to both the controller and the power source.</li></ol>
Buttons or sticks are unresponsive.	Software glitch; physical damage; dirt/debris.	<ol style="list-style-type: none"><li>1. Reset the controller.</li><li>2. Ensure the controller firmware is up to date (if applicable, check manufacturer's website).</li><li>3. Gently clean around the buttons/sticks with a soft, dry cloth or compressed air.</li></ol>
Vibration function not working.	Vibration disabled in game/console settings; internal issue.	<ol style="list-style-type: none"><li>1. Check game and console settings to ensure vibration is enabled.</li><li>2. Reset the controller.</li></ol>

## SPECIFICATIONS

Feature	Detail
Model Number	B0DM4N4JX3
Connectivity	Wireless (Bluetooth), Wired (Type-C USB)

Feature	Detail
Compatibility	<div><p>PS4, PS4 Pro, PS4 Slim, PC</p><p>WIDE GAME PLATFORMS Compatible P-4/ P-4 Pro/ P-4 slim/PC Windows</p><p>PC Windows</p><p>P-4 P-4 Pro P-4 silm</p><p>The controller supports a wide range of gaming platforms.</p></div>
Battery Capacity	600mAh rechargeable battery
Charging Port	Type-C
Working Time	8-10 hours (approx.)

Feature	Detail
Charging Time	1-2 hours (approx.)
Wireless Range	Up to 10m (33ft)
Vibration	Dual vibration motors
Motion Sensor	6-axis gyro sensor
Audio Features	3.5mm audio jack, built-in speaker
Dimensions	6.6 x 4.45 x 2.69 inches
Weight	10.86 ounces
Manufacturer	Matbip

## WARRANTY AND SUPPORT

Matbip is committed to providing high-quality products and customer satisfaction. For any issues or inquiries regarding your Matbip Wireless Controller, please contact our customer support team.

- **Warranty Information:** Please refer to the warranty card included in your product packaging or visit the official Matbip website for detailed warranty terms and conditions.
- **Customer Support:** If you encounter any problems, please leave us a message. We aim to reply within 24 hours.
- **Online Resources:** For additional support, FAQs, and driver updates, please visit the [Matbip Store on Amazon](#).



© 2023 Matbip. All rights reserved.  
Product Model: B0DM4N4JX3

Documents - Matbip – B0DM4N4JX3  
no relevant documents