

Edifier LolliClip

Edifier LolliClip Open-Ear True Wireless Earbuds User Manual

Model: LolliClip

1. INTRODUCTION

This manual provides detailed instructions for the proper use and maintenance of your Edifier LolliClip Open-Ear True Wireless Earbuds. Please read this manual thoroughly before using the product to ensure optimal performance and longevity.

2. WHAT'S IN THE BOX

- Edifier LolliClip Open-Ear True Wireless Earbuds (Left and Right)
- Wireless Charging Case
- Type-C Charging Cable
- User Manual

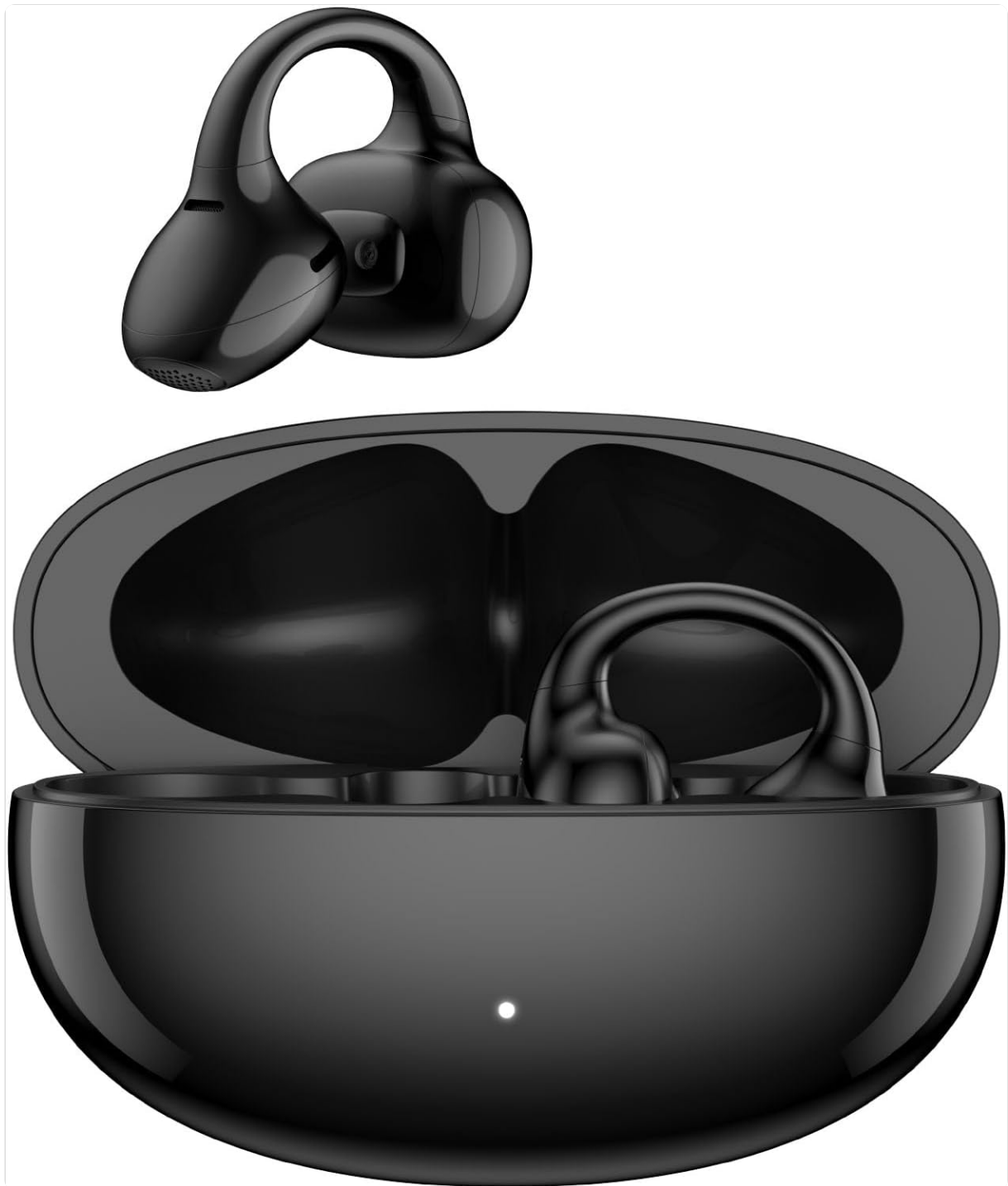


Image: The Edifier LolliClip earbuds, one removed from the charging case, with the open charging case visible. This illustrates the main components included.

3. SETUP

3.1 Charging the Earbuds and Case

Before first use, fully charge the earbuds and the charging case. Place the earbuds into the charging case. Connect the Type-C charging cable to the charging port on the case and a power source (DC5V 1A adapter, not included). The indicator light on the case will show charging status.

A 15-minute quick charge provides approximately 3 hours of listening time. A full charge offers up to 9 hours of playtime for the earbuds, and the charging case extends total playtime to 39 hours.

All-Day Power



Image: A white Edifier LolliClip charging case with a USB-C cable plugged in, illustrating the charging process and displaying battery life statistics.

3.2 Wearing Instructions

The LolliClip earbuds feature a multi-curvature ear hook designed for a secure and comfortable fit. Follow these steps to wear them correctly:

1. Take out an earbud from the charging case and locate the sound outlet.
2. Clip the earbud onto your auricle (outer ear) and adjust it upwards or downwards until the sound outlet is directed towards your ear canal.

The symmetrical design allows for interchangeable wear on either ear, with intelligent audio channel detection automatically calibrating the audio channels.

Controls



Call

Answer a call/End a call Double tap either earbuds

Music

Pause/Play	Double tap either earbuds
ANC mode switch	Double tap left earbuds
Next track	Triple tap right earbud
Sound mode switch	Triple tap left earbud

Image: A two-step diagram illustrating how to correctly position the earbud on the ear, ensuring the sound outlet is directed towards the ear canal.

3.3 Bluetooth Pairing

To pair your earbuds with a device:

1. Open the charging case. The earbuds will automatically enter pairing mode.
2. On your device (smartphone, tablet, laptop), enable Bluetooth and search for available devices.
3. Select "Edifier LolliClip" from the list of devices to connect.
4. Once connected, you will hear an audio prompt, and the indicator light on the earbuds will change.

The earbuds support Bluetooth 5.4 for stable connection and low-latency performance.

3.4 EDIFIER ConneX App Installation

For full functionality, download the EDIFIER ConneX App from your device's app store. The app allows for customized settings, EQ options, health monitoring, and more.

Multipoint Connection

Seamlessly switch between two Bluetooth devices for smooth, convenient experience.



Image: Various screenshots of the EDIFIER ConneX App displayed on several smartphones, highlighting its features and user interface.

4. OPERATING INSTRUCTIONS

4.1 Touch Controls

The earbuds feature touch controls for various functions:

Function	Action
Answer/End a call	Double tap either earbud
Pause/Play Music	Double tap either earbud
ANC Mode Switch	Double tap left earbud
Next Track	Triple tap right earbud
Sound Mode Switch	Triple tap left earbud

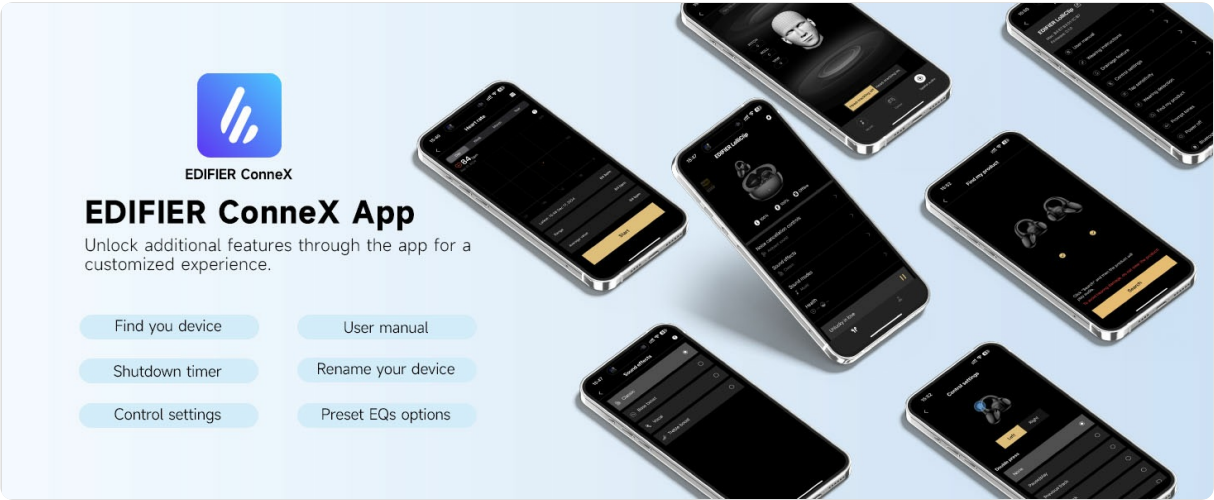


Image: A visual guide showing the touch-sensitive areas on the earbuds and their corresponding functions for calls and music playback.

4.2 Adaptive Active Noise Cancellation (ANC)

The earbuds feature adaptive ANC technology that intelligently adjusts noise reduction based on your fit and surrounding sounds. This provides a clear listening experience even in noisy environments while maintaining an open-ear design.

Open, but Quiet Adaptive Noise-Cancelling



Image: A man wearing the Edifier LolliClip earbuds, with a graphic overlay of sound waves demonstrating the active noise-cancelling feature in an open-ear design.

4.3 Spatial Audio

Experience immersive 360° spatial sound that adapts in real-time with head-tracking technology. This feature enhances the audio experience by creating a dynamic soundstage.

360° Spatial Audio



Image: A woman wearing white Edifier LolliClip earbuds, with concentric circles around her head indicating the 360° spatial audio experience.

4.4 Health Monitoring

Built-in sensors in each earbud allow for monitoring of heart rate and blood oxygen levels. Access these features through the EDIFIER ConneX App. Note: This product is not a medical device; the data provided is for reference only and should not be used for clinical diagnosis or treatment.

Heart Rate and Blood Oxygen Detection

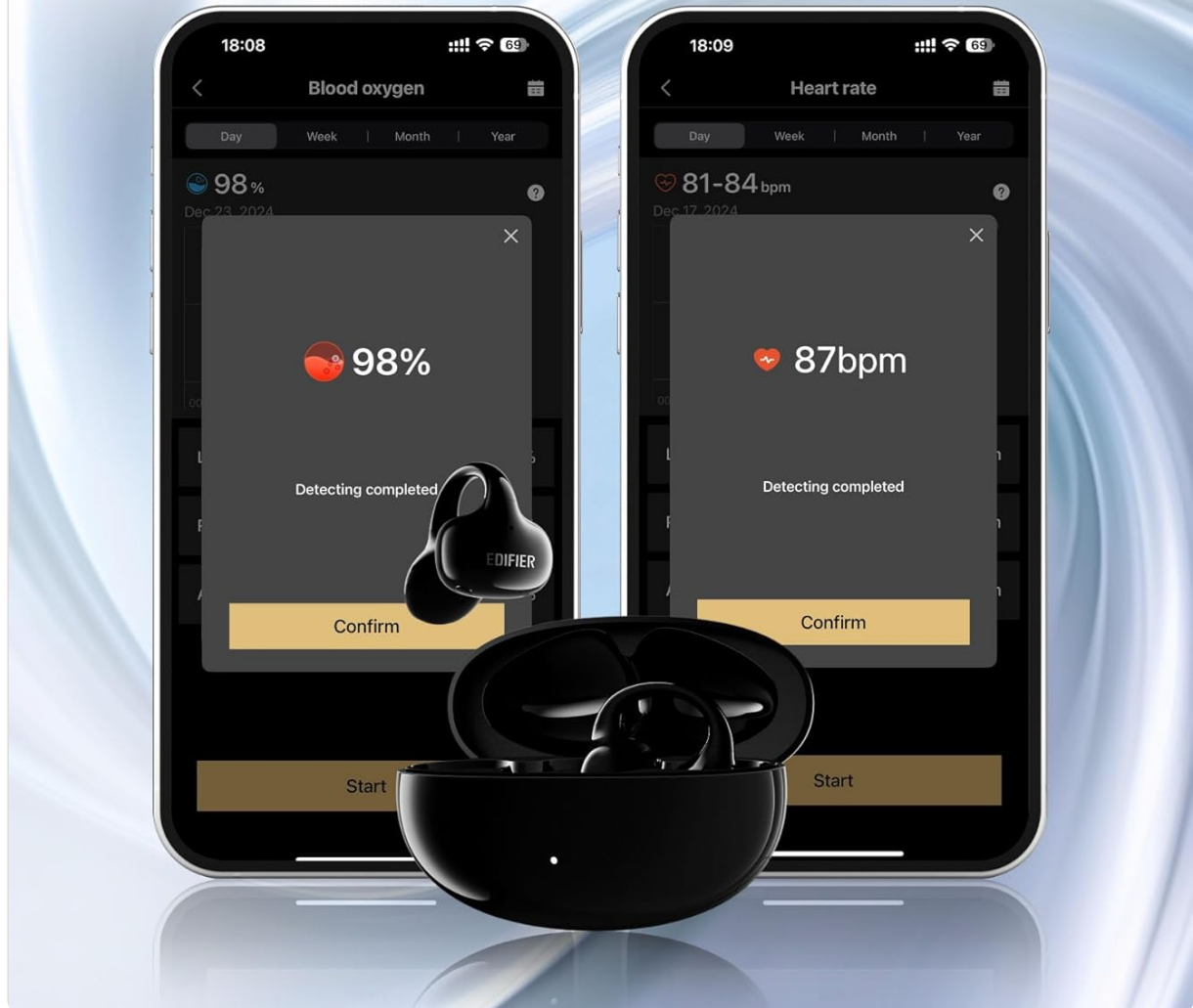


Image: Two smartphone screens showing the EDIFIER ConneX App interface, displaying detected blood oxygen (98%) and heart rate (81-84 bpm) from the earbuds.

4.5 Multipoint Connection

The earbuds support multipoint connection, allowing seamless switching between two Bluetooth devices simultaneously. This provides a convenient experience for users with multiple devices.

Smooth and Reliable Transmission

Bluetooth 5.4 provides a smoother, more stable connection and enable low-latency performance in game mode.



Image: A white Edifier LolliClip charging case with earbuds, wirelessly connected to a smartphone, tablet, and laptop, illustrating the multipoint connection feature.

4.6 Clear Hands-free Calls

Each earbud is equipped with three high-sensitivity microphones and an AI algorithm to ensure clear hands-free communication during calls.

Clear Hands-free Calls



Image: A man wearing black Edifier LolliClip earbuds, smiling while holding a smartphone, indicating clear hands-free calling.

4.7 Wearing Detection

The earbuds feature wearing detection, which automatically plays or pauses audio when the earbuds are inserted or removed from your ears.

IP56 Rating

Designed with IP56-rated dust and water resistance for reliable protection in various environments, with an additional smart drainage function available in the app.



Image: A woman wearing white Edifier LolliClip earbuds, demonstrating the automatic play/pause functionality through wearing detection.

5. MAINTENANCE

5.1 Cleaning

- Regularly clean the earbuds and charging case with a soft, dry, lint-free cloth.
- Do not use abrasive cleaners, alcohol, or chemical solvents.
- Ensure charging contacts on both earbuds and case are clean and dry to prevent charging issues.

5.2 Water and Dust Resistance (IP56)

The earbuds boast an IP56 rating, providing protection against dust ingress and high-pressure water jets from any direction. This makes them suitable for various environments, including workouts. However, they are not designed for submersion in water.

The EDIFIER ConneX App also offers a smart drainage function to help clear any moisture from the earbuds.

IP56 Dust and Water Resistance

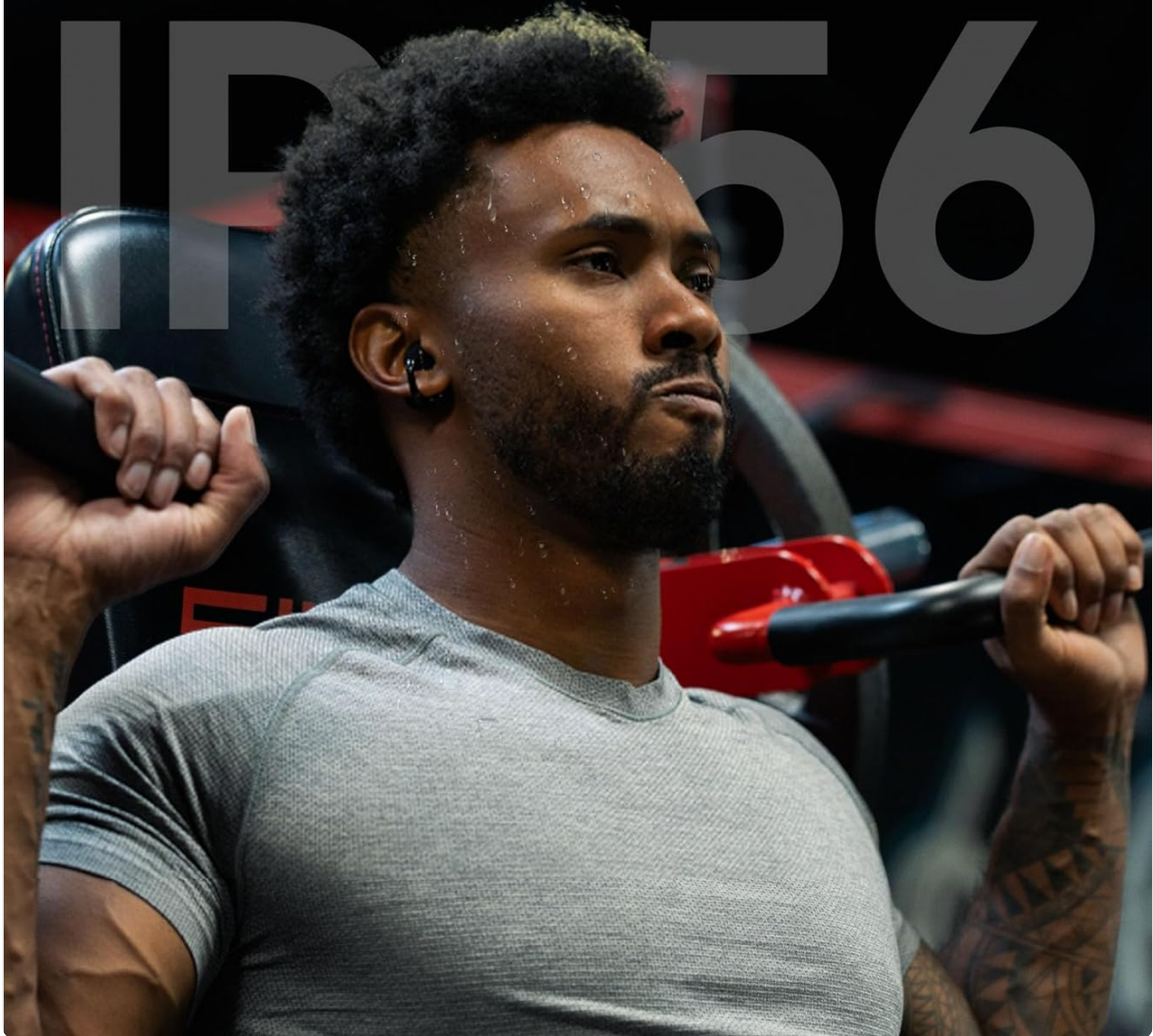


Image: A man exercising in a gym, wearing black Edifier LolliClip earbuds, with a large 'IP56' graphic overlay, emphasizing their dust and water resistance.

5.3 Storage

Store the earbuds in their charging case when not in use to protect them and keep them charged. Avoid exposing the earbuds or case to extreme temperatures, humidity, or direct sunlight.

6. TROUBLESHOOTING

If you encounter any issues with your Edifier LolliClip earbuds, please refer to the following common solutions:

- **No Sound/Low Volume:** Ensure earbuds are properly seated in your ears. Check device volume and earbud volume. Reconnect Bluetooth.
- **Earbuds Not Charging:** Verify the charging cable is securely connected to both the case and power source. Clean the charging contacts on the earbuds and inside the case. Ensure the case has power.
- **Pairing Issues:** Turn off Bluetooth on other nearby devices. Place earbuds back in the case, close, then

reopen to re-enter pairing mode. If issues persist, try resetting the earbuds (refer to the EDIFIER ConneX App for specific reset instructions).

- **Intermittent Connection:** Ensure your device is within the Bluetooth range (10 meters). Avoid obstacles between the earbuds and your device. Update the earbud firmware via the EDIFIER ConneX App.
- **Touch Controls Not Responding:** Ensure your fingers are clean and dry. Try restarting the earbuds by placing them in the case and taking them out again.
- **Health Monitoring Data Inaccurate:** Ensure earbuds are worn correctly and securely. Clean the sensors on the earbuds. Note that environmental factors and movement can affect readings.

For further assistance, consult the detailed user manual within the EDIFIER ConneX App or contact Edifier customer support.

7. SPECIFICATIONS

Feature	Specification
Model Name	LolliClip
Noise Control	Adaptive Noise Cancellation
Connectivity Technology	Wireless (Bluetooth 5.4)
Bluetooth Range	10 Meters
Audio Driver Size	13 mm Dynamic Driver
Frequency Response	20 Hz - 4000 Hz
Impedance	16 Ohm
Battery Life (Earbuds)	Up to 9 Hours (single charge)
Total Playtime (with Case)	Up to 39 Hours
Charging Time (Quick Charge)	15 minutes for 3 hours playtime
Water Resistance Level	IP56 (Dust and Water Resistant)
Control Type	Touch Control, App Control
Included Components	Earbuds, Wireless Charging Case, Type-C Charging Cable, User Manual
Material	Plastic
Item Weight	9.3 ounces

8. WARRANTY AND SUPPORT

8.1 Warranty Information

Edifier products typically come with a limited warranty. Please refer to the warranty card included with your product or visit the official Edifier website for specific warranty terms and conditions applicable to your region. Retain your proof of purchase for warranty claims.

8.2 Customer Support

For technical support, product inquiries, or service requests, please contact Edifier customer support through their official website or the contact information provided in the EDIFIER ConneX App. You can also visit the [Edifier Store on Amazon](#) for additional resources.

© 2025 Edifier. All rights reserved.

Related Documents - LolliClip

--	--

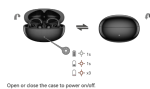


LolliClip

Open-ear True Wireless Noise Cancelling Earbuds

Manual

EN 1. Power ON/OFF



2. First pairing



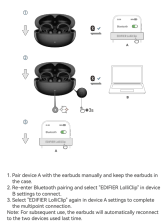
3. Pairing for new device



4. Reset



5. Multipoint connection



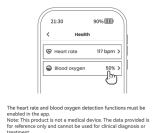
6. Controls



7. Charging



8. Heart rate and blood oxygen detection



Edifier LolliClip User Manual: Open-ear True Wireless Noise Cancelling Earbuds

This user manual provides detailed instructions for the Edifier LolliClip open-ear true wireless noise cancelling earbuds, covering setup, pairing, controls, charging, and health monitoring features.



Comfo Q

Model: EDP20009
Open-ear True Wireless Earbuds

Manual



EN 1. Power ON/OFF



Open or close the case to power on/off.

2. First pairing



- Once powered on, the earbuds will automatically enter Bluetooth pairing mode.
- Select "EDIFIER Comfo Q" from your device list to connect.

3. Pairing for new device



- Place the earbuds in the case and keep it open.
- Press and hold the button on the case for 3s until white and orange LED flash.
- Note: For subsequent use, the earbuds will automatically connect to the device used last time.

4. Multipoint connection



- Pair device A with the earbuds manually and keep the earbuds in the case.
- Pair device B with the earbuds manually and select "EDIFIER Comfo Q" in device B settings to connect.
- Select "EDIFIER Comfo Q" again in device A settings to complete the multipoint connection.
- Note: For subsequent use, the earbuds will automatically reconnect to the use device used last time.

5. Reset/Left & right connection



- Place the earbuds in the case and keep it open.
- Press the button on the case 3 times, white LED will blink until the reset is complete.
- Note: This operation will clear pairing records, reconnect left & right earbuds and restore factory settings.

6. Charging



Input: 5V=200mA (Earbuds) 5V=1A (Charging case)
Note: Make sure the USB port is completely dry before charging.

7. Controls



- Note:
- "X" double tap: "X" triple tap:
 - Download EDIFIER Control App to customize more control settings.

[Edifier Comfo Q True Wireless Earbuds User Manual | Pairing, Controls, Reset](#)

Comprehensive user manual for the Edifier Comfo Q open-ear true wireless earbuds. Learn how to pair, connect to multiple devices, reset, charge, and customize controls.

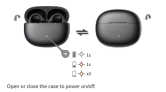


Comfo C

Open-ear True Wireless Earbuds

Manual

EN 1. Power ON/OFF



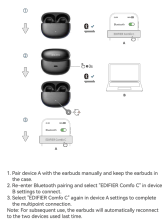
2. First pairing



3. Pairing for new device



4. Multipoint connection



5. Reset



6. Charging



7. Controls



[Edifier Comfo C Open-ear True Wireless Earbuds User Manual](#)

This manual provides instructions for the Edifier Comfo C open-ear true wireless earbuds, covering power on/off, pairing, multipoint connection, reset, charging, and controls.



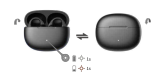
Comfo C

Open-ear True Wireless Earbuds

Manual



EN 1. Power ON/OFF



Open or close the case to power on/off

2. First pairing



- Once powered on, the earbuds will automatically enter Bluetooth pairing mode.
- Select "EDIFIER Comfo C" from your device list to connect.

3. Pairing for new device



- Place the earbuds in the case and keep it open.
- Press and hold the touch sensor on the case for 5s until white and orange LED blink.
- Wait for a moment, then the earbuds will automatically connect to the device used last time.

4. Multipoint connection



- Put device A with the earbuds manually and keep the earbuds in the case.
- Put device B with the earbuds manually and select "EDIFIER Comfo C" in device B settings to connect.
- Select "EDIFIER Comfo C" again in device A settings to complete the multipoint connection.
- Note: For subsequent use, the earbuds will automatically reconnect to the two devices used last time.

5. Reset



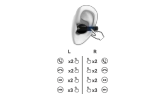
- Place the earbuds in the case and keep it open.
- Press the button on the case 3 times, white LED will blink until the reset is complete.

6. Charging



Input: 5V=200mA (Earbuds) 5V=1A (Charging case)
Note: Please use the USB port to completely charge before charging.

7. Controls



- Note:
- "T" indicates the "T" touch sensor.
 - "C" indicates the "C" touch sensor.
 - Double-tap the touch sensor for more customizable control settings.

Edifier Comfo C Open-ear True Wireless Earbuds User Manual

This manual provides instructions for using the Edifier Comfo C open-ear true wireless earbuds, covering power on/off, pairing, multipoint connection, reset, charging, and controls.



NeoBuds Planar

True Wireless Planar Magnetic Noise Cancelling Earbuds

Manual

EN 1. Power ON/OFF



Open or close the case to power ON/OFF

2. First pairing



- Once powered on, the earbuds will auto enter Bluetooth pairing mode.
- L2Ds will be lit up by you for about 10 seconds in a rotating pattern.
- Select "EDIFIER NeoBuds Planar" in your device settings to connect.

3. Pairing for new device



- Place the earbuds in the case and keep it open.
- Press and hold the button on the case for 5s. L2Ds will be lit up by you for about 10 seconds in a rotating pattern.
- Select "EDIFIER NeoBuds Planar" in your device settings to connect.
- Note: The earbuds will automatically connect to the device used last time.

4. Multipoint connection



- Pair device A with the earbuds manually and keep the earbuds in the case.
- Press the Bluetooth pairing and select "EDIFIER NeoBuds Planar" in device B settings to connect.
- Select "EDIFIER NeoBuds Planar" again in device A settings to complete the multipoint connection.

5. Reset/Left/Right Connection



- Place the earbuds in the case and keep it open.
- Press the button on the case 5 times. The L2Ds will blink until the light is complete.
- Note: This operation will clear pairing records, reconnect left/right earbuds and restore factory settings.

6. Charging



- Connect the included USB-C cable to a power source.
- Or charge with a compatible third-party wireless charger (not included).
- Note: The L2Ds will be lit up by you for about 10 seconds in a rotating pattern.
- Note: Make sure the USB-C port is completely dry before charging.

7. Controls



- Press area
- | Call | Music |
|------|-------|
| ⏏ | ⏏ |
| ⏮ | ⏮ |
| ⏭ | ⏭ |
| ⏪ | ⏪ |
| ⏩ | ⏩ |
| ⏴ | ⏴ |
| ⏵ | ⏵ |
- Note:
- "⏏" Press "⏏" Double press, "⏮" Triple press, "⏭" Press and hold.
 - Double press control: Noise Cancellation, Ambient Sound, Pause.
 - Download EDIFIER Connect App to customize more control settings.

[EDIFIER NeoBuds Planar True Wireless Noise Cancelling Earbuds User Manual](#)

Explore the EDIFIER NeoBuds Planar user manual for detailed instructions on pairing, multipoint connection, controls, charging, and app customization for these true wireless noise-cancelling earbuds.

--	--

Open or close the case to power on/off.

2. First pairing



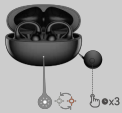
1. Once powered on, the earbuds will automatically enter Bluetooth pairing mode.
2. Select "EDIFIER LolliClip" from your device list to connect.

3. Pairing for new device



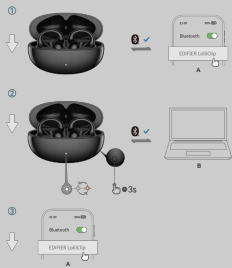
1. Place the earbuds in the case and keep it open.
 2. Press and hold the button on the case for 3s until white and orange LED blink.
- Note: For subsequent use, the earbuds will automatically connect to the device used last time.

4. Reset



1. Place the earbuds in the case and keep it open.
2. Press the button on the case 3 times, white LED will blink until the reset is complete.

5. Multipoint connection



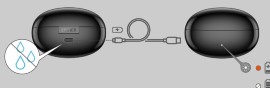
1. Pair device A with the earbuds manually and keep the earbuds in the case.
 2. Re-enter Bluetooth pairing and select "EDIFIER LolliClip" in device B settings to connect.
 3. Select "EDIFIER LolliClip" again in device A settings to complete the multipoint connection.
- Note: For subsequent use, the earbuds will automatically reconnect to the two devices used last time.

6. Controls



- Note:
1. "x2": double tap; "x3": triple tap;
 2. Download EDIFIER Connect App for more customizable control settings.

7. Charging

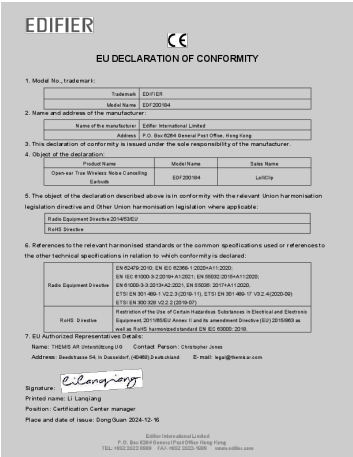
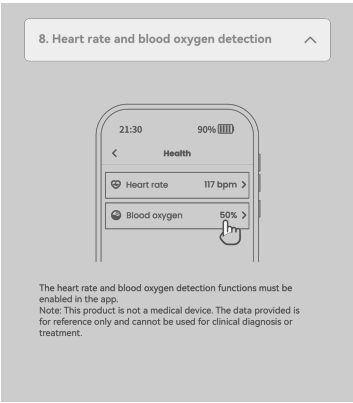


- Input: 5V≈200mA(Earbuds) 5V≈1A(Charging case)
Note: Make sure the USB port is completely dry before charging.

[Edifier LolliClip User Manual: Open-ear True Wireless Noise Cancelling Earbuds](#)

This user manual provides detailed instructions for the Edifier LolliClip open-ear true wireless noise cancelling earbuds, covering setup, pairing, controls, charging, and health monitoring features.

lang:en score:51 filesize: 943.2 K page_count: 8 document date: 2025-01-02



[pdf]

6923520248971 pl LolliClip Max ElektroUrządzenie A sparuj ręcznie ze słuchawkami pozostawiając je w etui 2 Ponownie wejdź parowanie Bluetooth i wybierz „EDIFIER z listy na gpoxymaxelektro storage file pimcore import 2025 5 29 a2fe743176528f2a561ad9bb9af72e6a sluchawki bezprzewodowe typu open ear edifier lolliclip czarne instrukcja obsługi |||

LolliClip Model: EDF200184 Sluchawki bezprzewodowe typu open ear Instrukcja obsługi Więcej informacji mona znale na naszej stronie internetowej: Edifier International Limited P.O. Box 6264 General Post Office Hong Kong www.edifier.com 2024 Edifier International Limited. All rights reserved. Printed i... lang:pl score:36 filesize: 3.63 M page_count: 9 document date: 2025-05-20

[pdf] User Manual

Comfo Flex User manual chaye Edifier International Limited EDF265 Open ear True Wireless Noise Cancelling Earbuds Z9G Z9GEDF265 edf265 OT-025-LOLLIC-00 80g 90X90mm /LolliClip/V1.0 3-5 W EN 3 is the minimum power required by the radio equipment to charge. 5 is the maximum power required by the radio equipment to achieve maximum charging speed. FR 3 est la puissance minimale requise par l quipement radio pour se charge... lang:it score:28 filesize: 2.66 M page_count: 1 document date: 2024-11-04

[pdf] Specifications Declaration of Conformity

EC Declaration of Conformity Jerry Download EU Edifier 79a9e1587779a380f9f803ab73de3ab9 new edifier us oss files 20250103 ||| EU DECLARATION OF CONFORMITY 1. Model No., trademark: Trademark EDIFIER Model Name EDF200184 2. Na ... Product Name Model Name Sales Name Open-ear True Wireless Noise Cancelling Earbuds EDF200184 LolliClip 5. The object of the declaration described above is in conformity with the relevant Union... lang:en score:26 filesize: 185.99 K page_count: 3 document date: 2025-01-03

EDIFIER

CE

EU DECLARATION OF CONFORMITY

1. Model No. (if available):

Sub-model	EDP05		
Model Name	EDP05		

2. Name and address of the manufacturer:

Name of the Manufacturer: Edifier International Ltd.		
Address: P.O. Box 6036, Peak Street Office, Hong Kong		

3. This declaration of conformity is issued under the sole responsibility of the manufacturer.

4. Object of the declaration:

Product Name	Model Name	Serial Number
Optical Fiber Wireless LAN Connecting Cable	EDP0509A	Lot/PC


5. The object of the declaration described above is in conformity with the relevant Union harmonisation legislation and other Union harmonisation legislation, where applicable.

6. References to the relevant harmonisation standards or to the common specifications used or references to the other relevant specifications in relation to which conformity is declared:

EN 60950-1:2005 + A11 EN 60950-1:2005 + A12 EN 60950-1:2005 + A13 EN 60950-1:2005 + A14 EN 60950-1:2005 + A15 EN 60950-1:2005 + A16 EN 60950-1:2005 + A17 EN 60950-1:2005 + A18 EN 60950-1:2005 + A19 EN 60950-1:2005 + A20 EN 60950-1:2005 + A21 EN 60950-1:2005 + A22 EN 60950-1:2005 + A23 EN 60950-1:2005 + A24 EN 60950-1:2005 + A25 EN 60950-1:2005 + A26 EN 60950-1:2005 + A27 EN 60950-1:2005 + A28 EN 60950-1:2005 + A29 EN 60950-1:2005 + A30 EN 60950-1:2005 + A31 EN 60950-1:2005 + A32 EN 60950-1:2005 + A33 EN 60950-1:2005 + A34 EN 60950-1:2005 + A35 EN 60950-1:2005 + A36 EN 60950-1:2005 + A37 EN 60950-1:2005 + A38 EN 60950-1:2005 + A39 EN 60950-1:2005 + A40 EN 60950-1:2005 + A41 EN 60950-1:2005 + A42 EN 60950-1:2005 + A43 EN 60950-1:2005 + A44 EN 60950-1:2005 + A45 EN 60950-1:2005 + A46 EN 60950-1:2005 + A47 EN 60950-1:2005 + A48 EN 60950-1:2005 + A49 EN 60950-1:2005 + A50 EN 60950-1:2005 + A51 EN 60950-1:2005 + A52 EN 60950-1:2005 + A53 EN 60950-1:2005 + A54 EN 60950-1:2005 + A55 EN 60950-1:2005 + A56 EN 60950-1:2005 + A57 EN 60950-1:2005 + A58 EN 60950-1:2005 + A59 EN 60950-1:2005 + A60 EN 60950-1:2005 + A61 EN 60950-1:2005 + A62 EN 60950-1:2005 + A63 EN 60950-1:2005 + A64 EN 60950-1:2005 + A65 EN 60950-1:2005 + A66 EN 60950-1:2005 + A67 EN 60950-1:2005 + A68 EN 60950-1:2005 + A69 EN 60950-1:2005 + A70 EN 60950-1:2005 + A71 EN 60950-1:2005 + A72 EN 60950-1:2005 + A73 EN 60950-1:2005 + A74 EN 60950-1:2005 + A75 EN 60950-1:2005 + A76 EN 60950-1:2005 + A77 EN 60950-1:2005 + A78 EN 60950-1:2005 + A79 EN 60950-1:2005 + A80 EN 60950-1:2005 + A81 EN 60950-1:2005 + A82 EN 60950-1:2005 + A83 EN 60950-1:2005 + A84 EN 60950-1:2005 + A85 EN 60950-1:2005 + A86 EN 60950-1:2005 + A87 EN 60950-1:2005 + A88 EN 60950-1:2005 + A89 EN 60950-1:2005 + A90 EN 60950-1:2005 + A91 EN 60950-1:2005 + A92 EN 60950-1:2005 + A93 EN 60950-1:2005 + A94 EN 60950-1:2005 + A95 EN 60950-1:2005 + A96 EN 60950-1:2005 + A97 EN 60950-1:2005 + A98 EN 60950-1:2005 + A99 EN 60950-1:2005 + A100	EN 60950-1:2005 + A11 EN 60950-1:2005 + A12 EN 60950-1:2005 + A13 EN 60950-1:2005 + A14 EN 60950-1:2005 + A15 EN 60950-1:2005 + A16 EN 60950-1:2005 + A17 EN 60950-1:2005 + A18 EN 60950-1:2005 + A19 EN 60950-1:2005 + A20 EN 60950-1:2005 + A21 EN 60950-1:2005 + A22 EN 60950-1:2005 + A23 EN 60950-1:2005 + A24 EN 60950-1:2005 + A25 EN 60950-1:2005 + A26 EN 60950-1:2005 + A27 EN 60950-1:2005 + A28 EN 60950-1:2005 + A29 EN 60950-1:2005 + A30 EN 60950-1:2005 + A31 EN 60950-1:2005 + A32 EN 60950-1:2005 + A33 EN 60950-1:2005 + A34 EN 60950-1:2005 + A35 EN 60950-1:2005 + A36 EN 60950-1:2005 + A37 EN 60950-1:2005 + A38 EN 60950-1:2005 + A39 EN 60950-1:2005 + A40 EN 60950-1:2005 + A41 EN 60950-1:2005 + A42 EN 60950-1:2005 + A43 EN 60950-1:2005 + A44 EN 60950-1:2005 + A45 EN 60950-1:2005 + A46 EN 60950-1:2005 + A47 EN 60950-1:2005 + A48 EN 60950-1:2005 + A49 EN 60950-1:2005 + A50 EN 60950-1:2005 + A51 EN 60950-1:2005 + A52 EN 60950-1:2005 + A53 EN 60950-1:2005 + A54 EN 60950-1:2005 + A55 EN 60950-1:2005 + A56 EN 60950-1:2005 + A57 EN 60950-1:2005 + A58 EN 60950-1:2005 + A59 EN 60950-1:2005 + A60 EN 60950-1:2005 + A61 EN 60950-1:2005 + A62 EN 60950-1:2005 + A63 EN 60950-1:2005 + A64 EN 60950-1:2005 + A65 EN 60950-1:2005 + A66 EN 60950-1:2005 + A67 EN 60950-1:2005 + A68 EN 60950-1:2005 + A69 EN 60950-1:2005 + A70 EN 60950-1:2005 + A71 EN 60950-1:2005 + A72 EN 60950-1:2005 + A73 EN 60950-1:2005 + A74 EN 60950-1:2005 + A75 EN 60950-1:2005 + A76 EN 60950-1:2005 + A77 EN 60950-1:2005 + A78 EN 60950-1:2005 + A79 EN 60950-1:2005 + A80 EN 60950-1:2005 + A81 EN 60950-1:2005 + A82 EN 60950-1:2005 + A83 EN 60950-1:2005 + A84 EN 60950-1:2005 + A85 EN 60950-1:2005 + A86 EN 60950-1:2005 + A87 EN 60950-1:2005 + A88 EN 60950-1:2005 + A89 EN 60950-1:2005 + A90 EN 60950-1:2005 + A91 EN 60950-1:2005 + A92 EN 60950-1:2005 + A93 EN 60950-1:2005 + A94 EN 60950-1:2005 + A95 EN 60950-1:2005 + A96 EN 60950-1:2005 + A97 EN 60950-1:2005 + A98 EN 60950-1:2005 + A99 EN 60950-1:2005 + A100
---	---

7. Author (Manufacturer's Representative):

Name: HONG KONG INTERNATIONAL LTD.	Contact Person: Christopher Ip
Address: Bayview 24 in District 4 (HONG KONG)	E-mail: ip@hks.com.hk

Signature: 

Printed name: Li Uanping

Position: Certification Center manager</

[illegible]

Statement of Compliance – UK PSTI 2023

1. Product type: *Security Wireless Rese Carcoring Enhancer / EOP200184(Lab Copy) (Batch A3)*

2. Name and address of manufacturer: *Effite International Limited
P.O. Box 6256 General Post Office, Hong Kong*

3. This declaration of compliance is prepared by the manufacturer of this product.

4. To the best of their knowledge, the manufacturer has complied with the deemed compliance conditions in Schedule 2
UK Product Security and Telecommunications Infrastructure Bill 2022
UK PSTI Regulation 2023 / Security Requirements for Relevant Consumer Products, Schedule 2

5. **Passive:**

6. There are no default payments on or within the product.

7. **Vulnerability Policy**
See <https://www.effite.com/policies/vulnerability>

8. **Security Update Period**
See https://www.effite.com/policies/updates_update

9. References to the relevant standard in relation to which conformity is declared:
ETSI EN 303 645 V2.1.1 (see 2020-08) (previous: 1.1, 1.2, 2, 3, 1.5, 1.9)

10. Defective product support:
*3 Years
31 December, 2029*

11. Signed for and on behalf of the manufacturer: *E. Langsam*

12. Name and date of issue: *Place: Singapore Date: 2025-1-6*

13. Name: *Li Langsam*

14. Function: *Certification Center manager*

15. Signature: *E. Langsam*

[\[pdf\]](#) Specifications Decleration of Conformity

EC Declaration of Conformity Jerry Download EU Edifier 93155e6db43666aa4f09e8a2992bccb4 new
edifier us oss files 20250306 |||

EU DECLARATION OF CONFORMITY 1. Model No., trademark: Trademark EDIFIER
Model Name EDF200184 2. Na ... Product Name Model Name Sales Name Open-ear
True Wireless Noise Cancelling Earbuds EDF200184 LolliClip 5. The object of the
declaration described above is in conformity with the relevant Union...

lang:en score:26 filesize: 186.03 K page_count: 3 document date: 2025-03-06

Edifier EU Declaration of Conformity for Open-ear True Wireless Noise Cancelling Earbuds

Official EU Declaration of Conformity for Edifier's Open-ear True Wireless Noise Cancelling Earbuds (Model: EDF200184, Sales Name: LolliClip), including details on radio equipment and RoHS directives, and conformity with harmonized standards. Also includes declarations for the rechargeable lithium-ion batteries used in the product.

lang:en score:26 filesize: 185.79 K page count: 3 document date: 2025-07-08

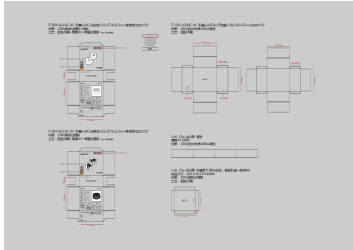
[\[pdf\]](#) Decleration of Conformity

Crescioli Chris Statement of ComplianceOpen ear True Wireless Earbuds LolliClip Edifier
UK 75c887be34fd966bf239412232079fa7new edifier us oss files 20250704

75c887be34fd966bf239412232079fa7 ||

Statement of Compliance UK PSTI 2023 1. Product type Open-ear True Wireless Noise Cancelling Earbuds / EDF200184 Lolli Clip / Batch-All 2. Name and address of manufacturer Edifier International Limited P.O. Box 6264 General Post Office, Hong Kong 3. This declaration of compliance is prepare...

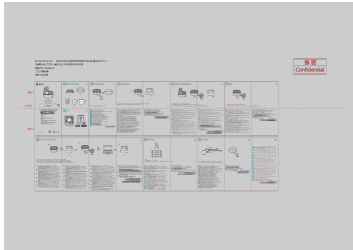
lang:en score:21 filesize: 59.67 K page count: 1 document date: 2025-07-04



[\[pdf\]](#) User Manual

LolliClip 20241101 Administrator product packaging Edifier International Limited EDF265 Open ear True Wireless Noise Cancelling Earbuds Z9G Z9GEDF265 edf265
/:2522/ 2URRO ROV SS - ; NN NN Open-ear True Wireless Noise Cancelling Earbuds
couteurs True Wireless rduction de bruit ouverts 67 67 XX 67 Open-ear True Wireless
Noise Cancelling Earbuds couteurs True Wireless rduction de bruit ouverts HETXMZI
SS SS 2 mics and AI algorithm for clear ...

lang:es **score:19** filesize: 346.23 K page_count: 1 document date: 2024-11-25



[Edifier LolliClip IB-200-LOLLIC-00 User Manual & Guide](#)

Comprehensive user manual for the Edifier LolliClip IB-200-LOLLIC-00 open-ear true wireless noise-cancelling earbuds. Includes setup, pairing, controls, charging, and app integration instructions.

lang:it **score:14** filesize: 3.42 M page_count: 1 document date: 2024-11-25