

## Manuals+

[Q & A](#) | [Deep Search](#) | [Upload](#)

manuals.plus /

- › [GarveeHome](#) /
- › [GarveeHome Dining Table Set for 4 with Benches - Instruction Manual](#)

## GarveeHome Dining Table Set for 4

# GarveeHome Dining Table Set for 4 with Benches

Model: Dining Table Set for 4

## 1. IMPORTANT SAFETY INFORMATION

---

Please read all instructions carefully before assembly and use. Keep this manual for future reference.

- Ensure all parts are present and undamaged before beginning assembly. Do not use if any parts are missing or broken.
- Assemble the product on a soft, clean surface to prevent scratches.
- Tighten all screws and bolts securely, but do not overtighten. Periodically check and retighten all fasteners to ensure stability.
- Do not stand or sit on the table. The table capacity is 150 LBS.
- The bench capacity is 400 LBS. Do not exceed this weight limit.
- Keep small parts and packaging materials away from children.
- Use the product only for its intended purpose as a dining table set.

## 2. PACKAGE CONTENTS

---

Verify that all components listed below are included in your package:

- 1 x Dining Table
- 2 x Benches
- Assembly Hardware (screws, bolts, Allen wrench)
- Instruction Manual

## 3. SETUP AND ASSEMBLY INSTRUCTIONS

---

Assembly is required for this dining table set. Follow these step-by-step instructions carefully. All parts are labeled for easy identification.

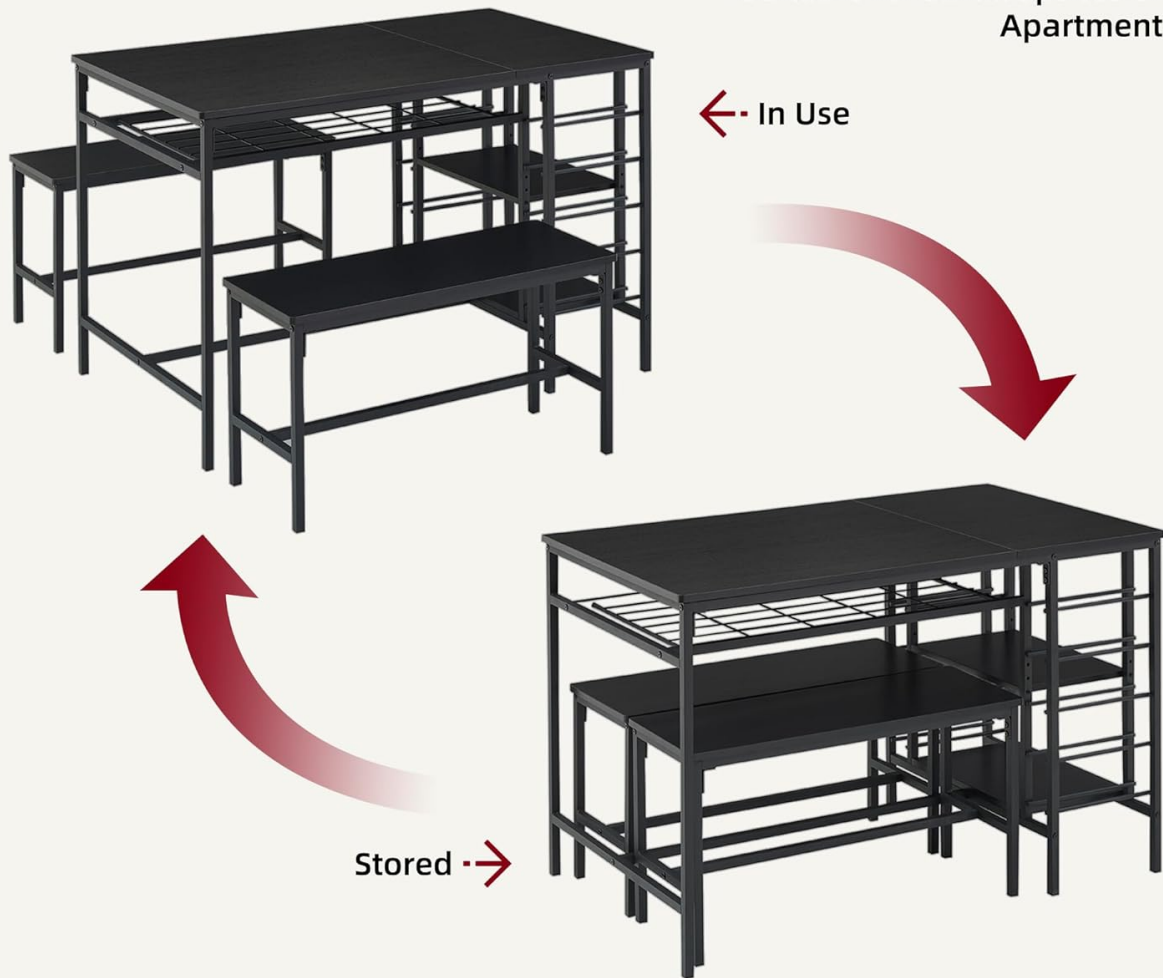
1. **Unpack Components:** Carefully remove all parts from the packaging and lay them out on a clean, soft surface to prevent damage. Identify each component using the provided parts list.
2. **Assemble the Table Frame:** Attach the table legs to the main tabletop support frame using the provided screws and Allen wrench. Ensure all connections are secure.
3. **Install Storage Racks:** Secure the wine rack and 2-tier adjustable storage shelves to the table frame as indicated in the diagrams. The shelves can be adjusted to different heights.
4. **Attach Tabletop:** Place the tabletop onto the assembled frame and secure it with the designated screws.
5. **Assemble Benches:** For each bench, attach the legs to the bench seat using the provided hardware. Ensure all connections are firm.
6. **Final Check:** Once all components are assembled, gently lift and place the table and benches in their desired location. Double-check all screws and bolts to ensure they are fully tightened for stability.



**Figure 3.1: Product Dimensions.** This image illustrates the overall dimensions of the dining table and benches, including length, width, and height, along with their respective weight capacities (Table: 150 lbs, Bench: 400 lbs).

## Space Saving Design

Suitable for Small Spaces or Apartment



**Figure 3.2: Structural Features.** This image highlights the reinforced structure, rounded corner design for safety, and anti-slip foot pads on the dining set, contributing to its durability and stability.

## 4. OPERATING INSTRUCTIONS

The GarveeHome Dining Table Set is designed for versatile use in various living spaces.

- **Dining Use:** The table comfortably seats 4 individuals with the two benches.
- **Wine Rack & Storage Shelves:** Utilize the integrated wine rack to store up to 10 bottles of wine. The 2-tier adjustable shelves are suitable for wine glasses, napkins, storage jars, or other tableware.
- **Under-Tabletop Storage:** A storage rack located under the tabletop provides additional space for dishes, utensils, or other small items for easy access.
- **Space-Saving Design:** When not in use, the two benches can be conveniently tucked completely under the dining table, optimizing space in smaller rooms.
- **Multifunctional Use:** Beyond dining, this set can serve as a working table or study desk. The built-in storage can hold books, magazines, and other essentials.

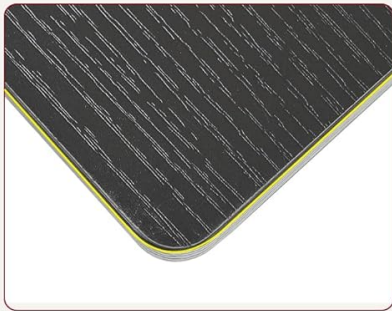


**Figure 4.1: Wine Rack and 2-Tier Storage.** This image displays the integrated wine rack capable of holding multiple bottles and the two-tier shelves designed for wine glasses and other dining accessories.

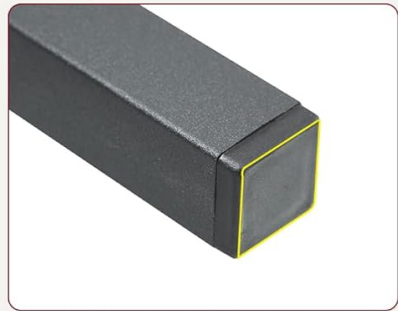
## Durable & Waterproof Tabletop



**Reinforced Structure**



**Rounded Corner Design**



**Anti-slip Foot Pad**

**Figure 4.2: Under-Tabletop Storage.** This image highlights the spacious storage rack positioned beneath the tabletop, ideal for keeping tableware, towels, wine, or books within easy reach.



**Figure 4.3: Space-Saving Design.** This diagram demonstrates the efficient design where the benches can be fully stored under the table, making it suitable for small spaces or apartments.

## 5. MAINTENANCE

---

Proper care will ensure the longevity and appearance of your dining table set.

- **Cleaning:** The tabletop features a waterproof and scratch-resistant surface. Wipe spills immediately with a soft, damp cloth. For general cleaning, use a mild soap solution and dry thoroughly. Avoid harsh chemicals or abrasive cleaners.
- **Dusting:** Regularly dust all surfaces with a soft, dry cloth.
- **Fasteners:** Periodically check all screws and bolts to ensure they remain tight. Retighten as necessary to maintain stability.
- **Avoid Extreme Conditions:** Do not place hot items directly on the tabletop without protection. Avoid prolonged exposure to direct sunlight or excessive moisture.

## 6. TROUBLESHOOTING

---

If you encounter any issues with your GarveeHome Dining Table Set, please refer to the following common solutions:

- **Wobbling Table/Benches:** Ensure all screws and bolts are fully tightened. Check that the product is placed on a level surface. Adjust the anti-slip foot pads if necessary.
- **Missing Parts:** If any parts are missing upon unboxing, please contact customer support immediately with your purchase details.
- **Difficulty Assembling:** Review the assembly instructions carefully. Ensure you are using the correct hardware for each step. Do not force parts together.
- **Scratches/Damage:** For minor scratches, furniture repair pens or markers may be used. For significant damage, contact customer support.

## 7. SPECIFICATIONS

| Feature            | Specification                          |
|--------------------|--|
| Model Number       | Dining Table Set for 4                 |
| Product Dimensions | 39.17 x 30.31 x 7.28 inches (Packaged) |
| Item Weight        | 73.2 pounds                            |
| Table Capacity     | 150 LBS                                |
| Bench Capacity     | 400 LBS                                |
| Material           | Solid Metal, Thick Boards              |
| Color              | Black                                  |
| Assembly Required  | Yes                                    |

## 8. WARRANTY AND SUPPORT

GarveeHome stands behind the quality of its products. For any questions, concerns, or assistance with your dining table set, please contact our customer support team.

You can find more information and contact details by visiting the official [GarveeHome Store on Amazon](#).