

## Manuals+

[Q & A](#) | [Deep Search](#) | [Upload](#)

Manuals.plus /

› [GLAKER](#) /

› GLAKER JM-700UU-6 6-in-1 Beard Trimmer and Grooming Kit User Manual

## GLAKER JM-700UU-6

# GLAKER JM-700UU-6 6-in-1 Beard Trimmer and Grooming Kit User Manual

Model: JM-700UU-6 | Brand: GLAKER

## 1. INTRODUCTION

This manual provides detailed instructions for the safe and effective use of your GLAKER JM-700UU-6 6-in-1 Beard Trimmer and Grooming Kit. Please read all instructions carefully before first use and retain this manual for future reference. This versatile grooming tool is designed for precision trimming, detailing, and shaving of facial, body, and head hair.

## 2. PACKAGE CONTENTS

Your GLAKER JM-700UU-6 6-in-1 Grooming Kit includes the following 17 pieces:

- 1x Beard Trimmer
- 1x Hair Trimmer
- 1x Precision Trimmer
- 1x Body Trimmer (with 3/6/9mm adjustable comb)
- 1x Foil Shaver
- 1x Nose & Ear Trimmer
- 4x Beard Trimmer Guards (various lengths)
- 4x Hair Trimmer Guards (various lengths)
- 1x USB-C Charging Cable
- 1x Lubricating Oil
- 1x Cleaning Brush



Figure 1: All components included in the GLAKER JM-700UU-6 6-in-1 Grooming Kit. This image displays the main trimmer unit, various interchangeable heads (beard, hair, precision, body, foil shaver, nose/ear), multiple guide combs, and accessories like the charging cable, oil, and cleaning brush.

### 3. PRODUCT FEATURES

#### 3.1. 6-in-1 Versatility

The GLAKER JM-700UU-6 offers six distinct trimming heads to cover all your grooming needs, including beard trimming, hair cutting, precision detailing, body grooming, foil shaving, and nose/ear hair removal. This comprehensive kit ensures you have the right tool for every area.

# 6IN1 Multi-Trimmer

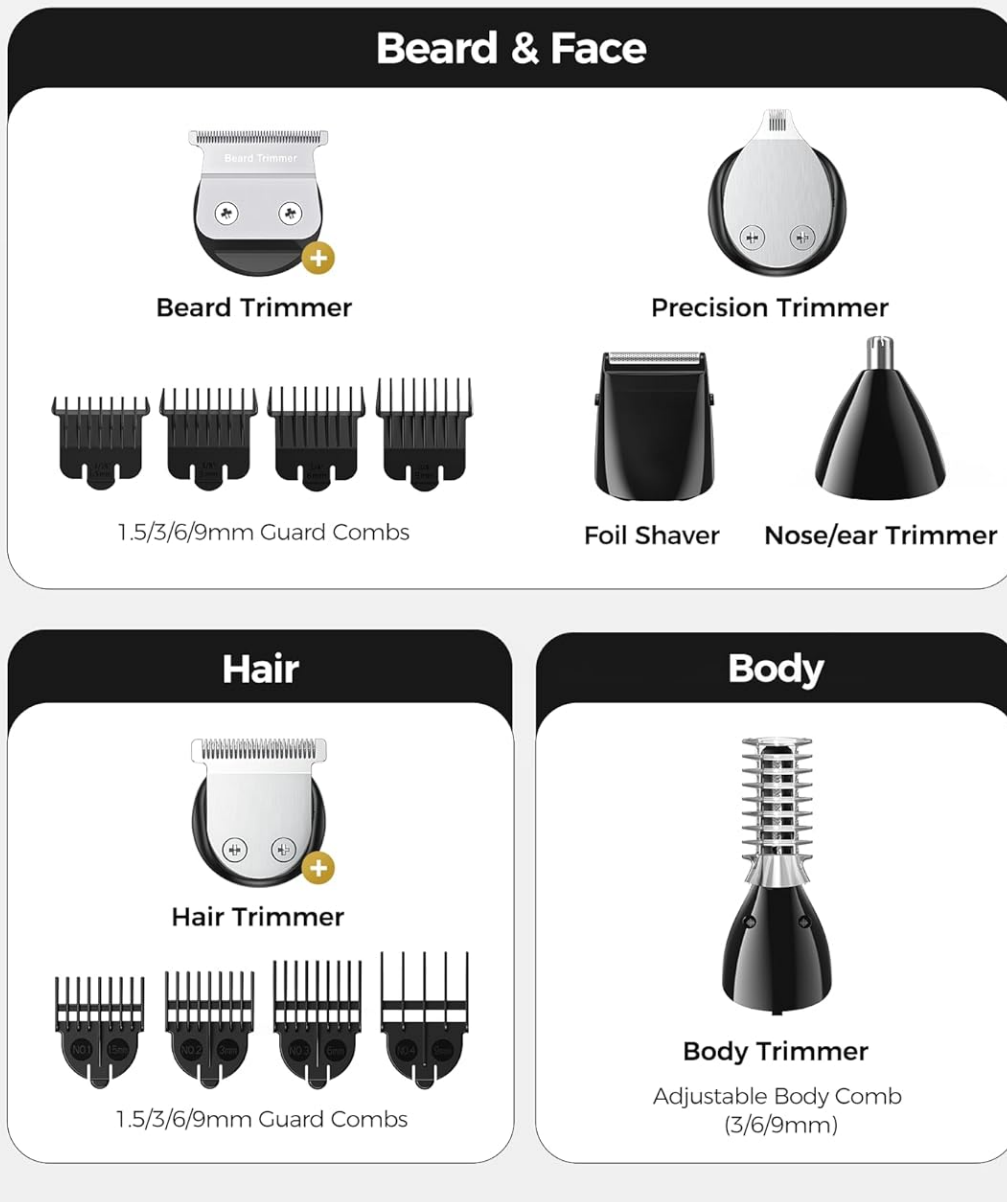


Figure 2: Visual breakdown of the six interchangeable trimmer heads: Beard Trimmer, Precision Trimmer, Foil Shaver, Hair Trimmer, Nose & Ear Trimmer, and Body Trimmer, along with their respective guide combs.

## 3.2. Ultra-Sharp Blades

Experience precise and smooth cuts with the durable, ultra-sharp, and long-lasting stainless steel blades. These blades are designed for efficient grooming without pulling or snagging hair. Regular oiling is recommended for optimal performance.

# Extreme Precision Blade

440C Steel Blades Cut Precisely Without Pulling



Figure 3: A detailed view of the trimmer's 440C steel blades, highlighting their precision design for clean cuts.

### 3.3. Gentle on Skin

The electric shaver razor is engineered to protect your skin, even in sensitive areas. It effectively removes hair while maintaining a gentle touch, minimizing nicks and cuts.



# Touch on Hair Gentle on Skin

Helps to Reduce Nicks & Cuts

Figure 4: A user demonstrating the gentle application of the GLAKER trimmer on facial hair, emphasizing skin protection.

### **3.4. 150 Minutes Cordless Runtime**

Equipped with a powerful lithium-ion battery, the trimmer provides up to 150 minutes of cordless operation on a single charge. The integrated LED display indicates the current battery level, ensuring you know when to recharge.



Figure 5: The GLAKER trimmer's handle showing the digital LED display with '99' (indicating 99% battery) and text highlighting its 150 minutes of cordless runtime.

### 3.5. 8 Guide Combs

The kit includes 8 guide combs for precise control over your desired hair length and style. There are 4 hair trimmer guide combs for haircuts (from 1/16" to 3/8") and 4 beard trimmer guide combs for stubble to full beard styles.

## 4. SETUP

### 4.1. Charging the Trimmer

Before first use, fully charge the trimmer. Connect the USB-C charging cable to the port at the bottom of the trimmer and plug the other end into a compatible 5V, 1A to 3A USB adapter (adapter not included). The LED display will show the charging status and battery percentage. A full charge typically takes 1.5 to 2 hours.



Figure 6: The GLAKER trimmer being charged via its USB-C port, illustrating the convenient charging method.

## 4.2. Attaching and Removing Trimmer Heads

To change the trimmer head, gently push the current head upwards from the back to detach it. To attach a new head, align the new head with the main unit and push it down until it clicks securely into place.

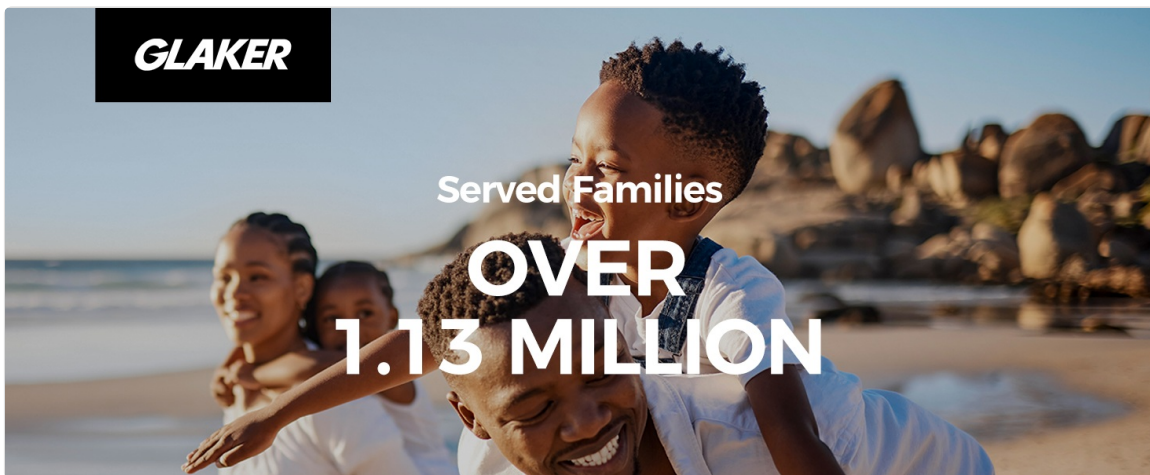


Figure 7: A visual guide demonstrating the simple process of attaching and removing the interchangeable heads from the GLAKER trimmer unit.

## 5. OPERATING INSTRUCTIONS

Select the appropriate trimmer head and guide comb for your desired grooming task. Press the power button to turn the trimmer on. For best results, ensure your hair is clean and dry.

### 5.1. Using Different Trimmer Heads

- **Beard Trimmer:** Use with appropriate guide combs for maintaining beard length or without for precise edging.
- **Hair Trimmer:** Attach desired hair trimmer guide comb for haircuts or fades.
- **Precision Trimmer:** Ideal for sharp lines, detailing, and intricate styling.
- **Body Trimmer:** Designed for sensitive areas, use with the adjustable comb for desired length.
- **Foil Shaver:** For a close, smooth shave on stubble.
- **Nose & Ear Trimmer:** Gently insert into nostrils or ears to trim unwanted hair.

Your browser does not support the video tag.

Video 1: This video demonstrates the GLAKER Beard and Hair Trimmer for Men, showcasing how to use its various 6 heads for different grooming needs, including beard trimming, hair cutting, and detailing.

Your browser does not support the video tag.

Video 2: This video provides a general overview of the GLAKER Beard Trimmer for Men, demonstrating its ease of use and effectiveness for daily grooming routines.

## 6. MAINTENANCE

### 6.1. Cleaning the Blades

After each use, remove the trimmer head and rinse the stainless steel blades under running tap water. Use the provided cleaning brush to remove any trapped hairs. Ensure the blades are completely dry before reattaching or storing.



# Easy to Rinse

Steel Blades are Easily ,  
Detach for Cleaning

Figure 8: A hand holding the detachable trimmer blades under running water in a sink, illustrating the easy rinsing process for cleaning.

### 6.2. Lubricating the Blades

Regularly apply a few drops of the provided lubricating oil to the blades to maintain their sharpness and

ensure smooth operation. This helps prevent friction and prolongs the life of your trimmer.

## 7. TROUBLESHOOTING

- **Trimmer not turning on:** Ensure the device is charged. Check the USB-C cable connection.
- **Poor cutting performance:** Clean the blades thoroughly and apply lubricating oil. Ensure the correct trimmer head and guide comb are securely attached.
- **Skin irritation/nicks:** Ensure blades are clean and oiled. Use the appropriate head for sensitive areas. Trim against the direction of hair growth for a closer cut, but be gentle.

## 8. SPECIFICATIONS

Feature	Detail
Product Dimensions	6.18 x 1.65 x 1.1 inches
Item Model Number	JM-700UU-6
Batteries	1 Lithium Ion battery required
Item Weight	184 Grams (6.49 ounces)
Brand	GLAKER
Power Source	Battery Powered
Recommended Uses	Beard, Hair, Body, Nose, Ear

## 9. SAFETY INFORMATION

For your safety, please adhere to the following guidelines:

- Do not exceed 5V 1A for the adapter to avoid charging issues or permanent damage to the device.
- Keep the device dry. Do not immerse in water.
- Keep out of reach of children.
- Ensure blades are clean and free of debris before use.
- If the device malfunctions, discontinue use and contact support.

## 10. WARRANTY AND SUPPORT

The GLAKER JM-700UU-6 6-in-1 Beard Trimmer and Grooming Kit comes with a 1-year warranty, providing reliable support and a worry-free experience. For any product inquiries, technical assistance, or warranty claims, please contact our customer support team.

**Email:** [support@glaker.com](mailto:support@glaker.com)