

ARENTI OP1

ARENTI OP1 Wired Outdoor Security Camera User Manual

Model: OP1 | Brand: ARENTI

INTRODUCTION

This manual provides detailed instructions for the installation, operation, and maintenance of your ARENTI OP1 Wired Outdoor Security Camera. Please read this manual thoroughly before using the product to ensure proper function and safety. The ARENTI OP1 is designed for comprehensive outdoor surveillance, offering 2K 4MP resolution, 360° PTZ capabilities, and intelligent motion tracking for enhanced home security.

PACKAGE CONTENTS

Verify that all items listed below are included in your package:

- Camera x1
- Power adaptor x1
- Type-C cable x1
- Bracket x1
- Screw package x1
- Quick Guide x1
- Silicone plug for power cable x1

PRODUCT FEATURES

24 Hour 360° Surveillance

The ARENTI OP1 PTZ camera offers automated patrol during pre-set periods and within customized activity zones. It intelligently tracks suspicious motion on your property, serving as a vigilant security guard day and night. Manual pan, tilt, and zoom control are also available via the phone application.

2.5K 360° PTZ Camera

Never Miss a Moment



Image: The ARENTI OP1 camera demonstrating its 360-degree pan and tilt capabilities, showing a wide surveillance area.

2K 4MP Resolution & Night Vision

Equipped with 4 million pixels and 2K resolution, a starlight CMOS sensor, 3000K warm light, and two 850nm infrared LEDs, the ARENTI OP1 provides clear color night vision and accurate motion detection alerts even in complete darkness. The 8X digital zoom allows for detailed viewing, such as car license plates.



Image: The ARENTI OP1 camera alongside a smartphone screen, highlighting its 4MP resolution for clear image capture.

Intelligent Detection

The camera offers free motion and sound detection, along with advanced intelligent alerts that distinguish between people, pets, vehicles, and other motion events. Instant notifications are sent to your phone upon detection.

AI-Powered Detection Zero False Alarms



Activity Detected



Accurate Alerts

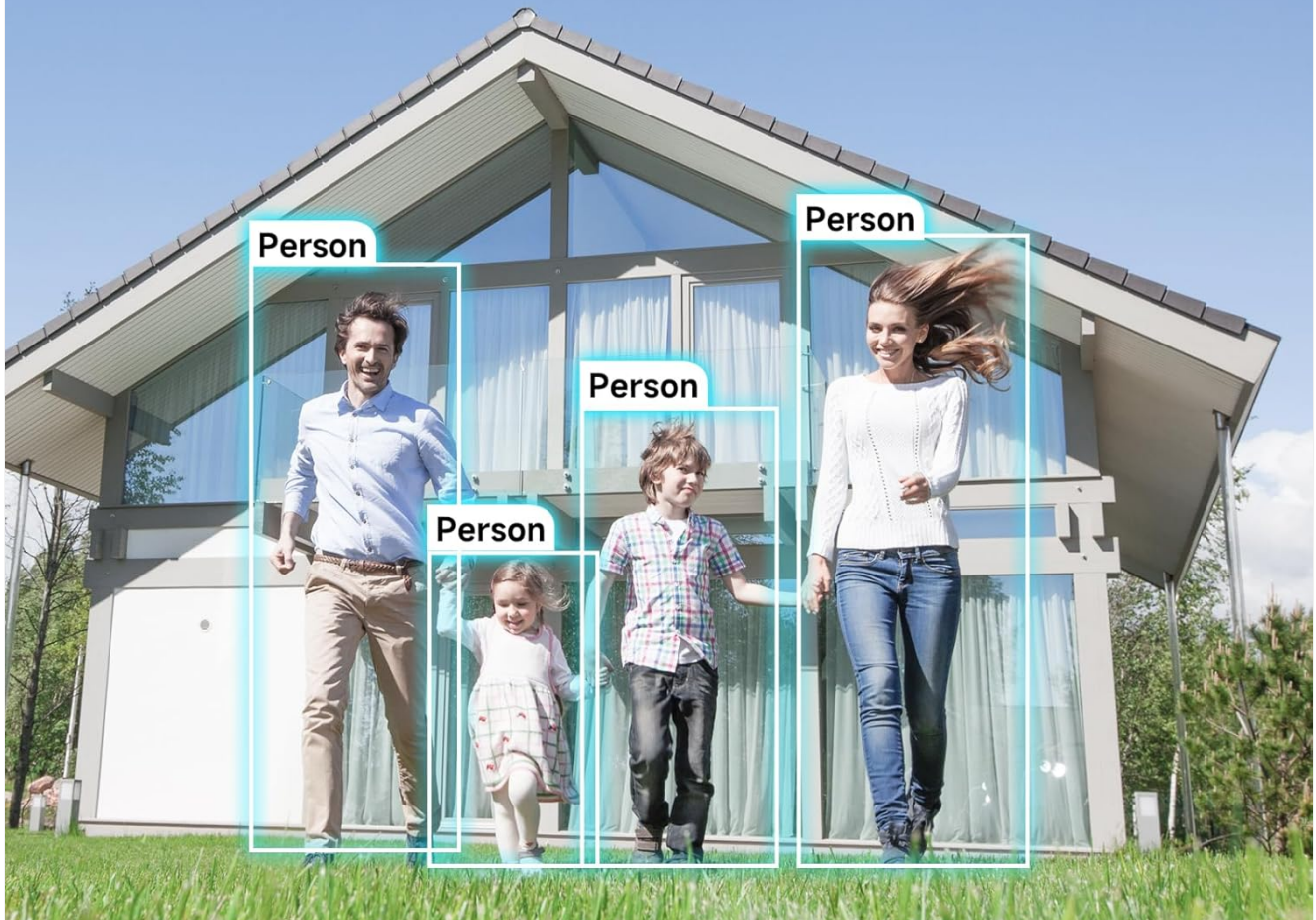


Image: An illustration showing the camera's AI-powered detection capabilities, accurately identifying and highlighting human figures in a scene.

Dual-Band Wi-Fi Connectivity

The ARENTI OP1 supports both 5GHz and 2.4GHz Wi-Fi bands, ensuring less buffering and faster response times when accessing live video via Alexa or Google Assistant. 2.4GHz offers a longer connection distance, while 5GHz provides faster speeds.



Image: The ARENTI OP1 camera with an overlay indicating its support for both 2.4GHz and 5GHz dual-band Wi-Fi for stable streaming.

Two-Way Audio

Communicate directly through the camera with its two-way audio feature. Hear and speak from anywhere using the connected phone application.

Two-Way Audio

Hear & Speak from Anywhere



Image: A visual representation of the camera's two-way audio function, showing a user speaking to a delivery person through the device.

IP65 Waterproof Design

The camera boasts an IP65 waterproof rating, ensuring reliable operation in various weather conditions, from -4°F to 122°F (-20°C to 50°C). It is designed to withstand heavy rain, snow, ice, and dust.



Image: The ARENTI OP1 camera shown in a rainy environment, emphasizing its IP65 waterproof and weather-resistant design.

Triple Alarm System

Your 24/7 security guard features an audible alert, visual deterrent (spotlights), and instant notifications to your phone, providing a comprehensive triple alarm system.

Triple Alarm System Your 24/7 Security Guard



Audible Alert



Visual Deterrent



**Instant
Notification**



Image: A smartphone screen displaying the ARENTI OP1 app interface, illustrating the audible alert, visual deterrent, and instant notification features of the triple alarm system.

No Hidden Monthly Fee

The camera includes free cloud service for 7-day loop 6-second event recording. Motion, human, and sound detection features are free to use. You can share camera access with family or friends without limitations, and sharing can be canceled at any time. Local storage via an SD card up to 256GB (not included) is also supported to protect your private data.

Smart Home Integration

The ARENTI OP1 is compatible with Amazon Alexa and Google Assistant, allowing for voice control and seamless integration into your smart home ecosystem.



Alexa, show me the backyard



Image: A smart display showing live camera feed, indicating compatibility with Amazon Alexa and Google Assistant for voice commands.

SETUP

Physical Installation

The camera comes with all necessary mounting hardware, including a bracket and screws, for easy installation on walls, eaves, fences, or other suitable surfaces. Ensure the camera is mounted securely in a location that provides the desired viewing angle and optimal Wi-Fi signal.

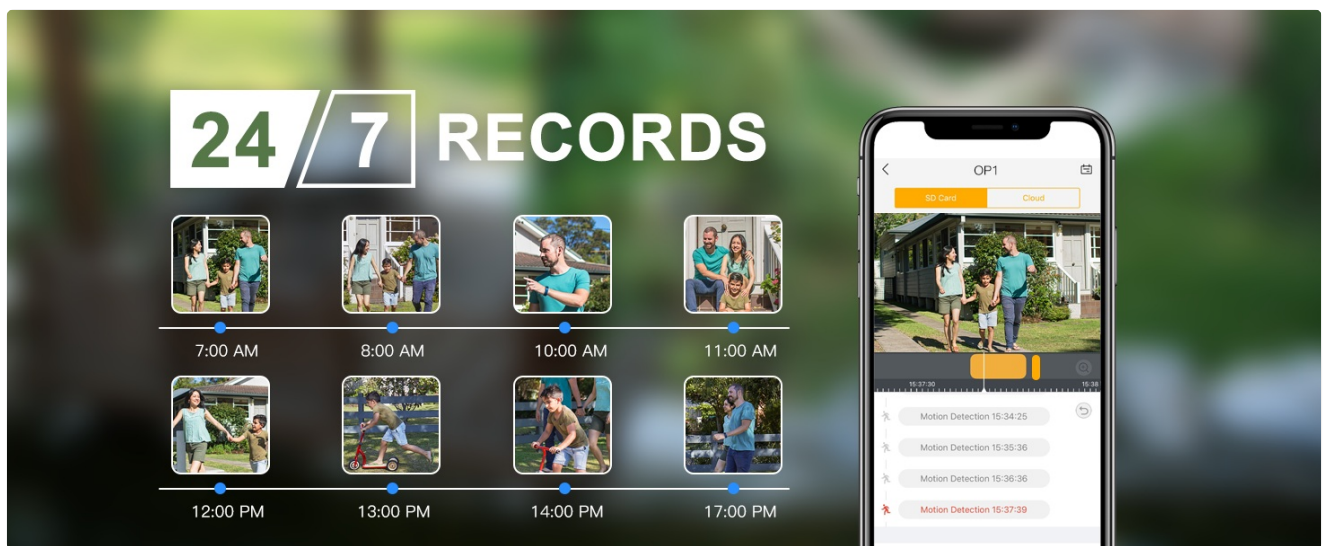


Image: A diagram illustrating the steps for mounting the camera to a wall or surface using the provided bracket and screws.

App Configuration

Download the ARENTI app from your device's app store. Follow the in-app instructions to add your new camera. During setup, ensure your device is connected to a 2.4GHz Wi-Fi network, as the camera primarily connects to this frequency for optimal range and stability. Hold the RESET button on your device for 4-5 seconds until the LED indicator flashes red to initiate pairing mode.



Image: Screenshots of the ARENTI mobile application, guiding the user through the process of adding a new camera device.

OPERATING INSTRUCTIONS

Live View and PTZ Control

Access the live feed through the ARENTI app. Use the on-screen controls to pan the camera horizontally up to 355 degrees and tilt vertically up to 90 degrees, allowing you to cover a wide area. The 8x digital zoom can be used to focus on specific details.

Motion Detection Settings

Customize motion detection sensitivity (levels 1-10) to minimize false alarms. Enable automatic sensitivity correction for dynamic adjustments. Set specific alert plans and define humanoid alarm areas for precise monitoring.

Night Vision Modes

The camera supports both infrared night vision (black and white) and full-color night vision using its integrated

spotlights. Select the mode that best suits your surveillance needs in low-light conditions.

Audio Settings

Enable or disable the microphone and voice recording. Adjust speaker volume for two-way audio communication. Ensure full duplex audio is enabled for clear two-way conversations.

Recording Management

The camera supports continuous recording to a local SD card (up to 256GB, not included) or event-based recording to the free 7-day loop cloud service. Review recorded footage through the app's history or album sections.

MAINTENANCE

To ensure optimal performance and longevity of your ARENTI OP1 camera, regular maintenance is recommended:

- **Cleaning:** Periodically wipe the camera lens and body with a soft, damp cloth to remove dust, dirt, or water spots. Avoid using harsh chemicals or abrasive materials that could damage the surface.
- **Power Supply:** As a wired camera, ensure the power adapter and Type-C cable connections are secure and free from damage. The included silicone plug helps protect the power cable connection from environmental elements.
- **Firmware Updates:** Check the ARENTI app regularly for available firmware updates. Keeping the camera's firmware updated ensures access to the latest features, security enhancements, and bug fixes.
- **Environmental Protection:** While the camera is IP65 waterproof, extreme weather conditions can still impact performance. Ensure the camera is mounted securely to withstand strong winds and that its position minimizes direct exposure to prolonged heavy precipitation if possible.

TROUBLESHOOTING

If you encounter issues with your ARENTI OP1 camera, refer to the following common troubleshooting steps:

- **No Power/Offline:**
 - Check if the power adapter is securely connected to the camera and a working power outlet.
 - Ensure the Type-C cable is not damaged.
 - Verify your Wi-Fi network is active and stable.
 - If the camera is offline, try restarting it by unplugging and re-plugging the power.
- **Poor Video Quality:**
 - Ensure the camera lens is clean and free from obstructions.
 - Check your Wi-Fi signal strength in the camera's location. A weak signal can affect streaming quality.
 - Verify that the camera's resolution settings in the app are set to 2K 4MP.
- **Frequent False Alarms:**
 - Adjust the motion detection sensitivity in the app to a lower level.
 - Define specific activity zones to exclude areas with frequent irrelevant motion (e.g., moving trees, street traffic).
- **Two-Way Audio Issues:**
 - Ensure the microphone and speaker options are enabled in the app's sound settings.
 - Check the speaker volume level in the app.
 - Verify that there are no physical obstructions blocking the microphone or speaker on the camera.

- **Cannot Connect to Wi-Fi:**

- Confirm your router is broadcasting a 2.4GHz Wi-Fi signal. The camera does not support 5GHz for initial connection.
- Ensure you are entering the correct Wi-Fi password.
- Move the camera closer to the router during the initial setup process.
- Perform a factory reset on the camera (refer to the app setup section for instructions).

SPECIFICATIONS

Feature	Detail
Model	OP1
Resolution	2K 4MP
PTZ Angle	Pan 355°, Tilt 90°
Digital Zoom	8X
Night Vision	Color Night Vision, Infrared Night Vision (32.8 Feet)
Connectivity	5GHz/2.4GHz Wi-Fi (Wired Power)
Storage	Cloud Storage (7-day loop 6 sec event), SD Card (up to 256GB)
Audio	Two-Way Audio
Weather Resistance	IP65 Waterproof
Operating Temperature	-4°F to 122°F (-20°C to 50°C)
Power Source	Corded Electric (5 Volts DC, 2.5 Watts)
Dimensions (L x W x H)	5.94 x 4.8 x 8.52 inches
Item Weight	1.46 pounds

WARRANTY AND SUPPORT

ARENTI provides a standard manufacturer's warranty for this product. For detailed warranty information, technical support, or service inquiries, please refer to the official ARENTI website or contact their customer service directly. Keep your purchase receipt as proof of purchase for warranty claims. Visit the [ARENTI Store](#) for more information.