

TECKNET TK-MS007

TECKNET Ergonomic Wireless Vertical Mouse User Manual

Model: TK-MS007

1. INTRODUCTION

Thank you for choosing the TECKNET Ergonomic Wireless Vertical Mouse. This manual provides detailed instructions for setting up, operating, and maintaining your new mouse to ensure optimal performance and comfort. Its unique vertical design is engineered to reduce wrist strain and promote a more natural hand position, making it ideal for extended use.



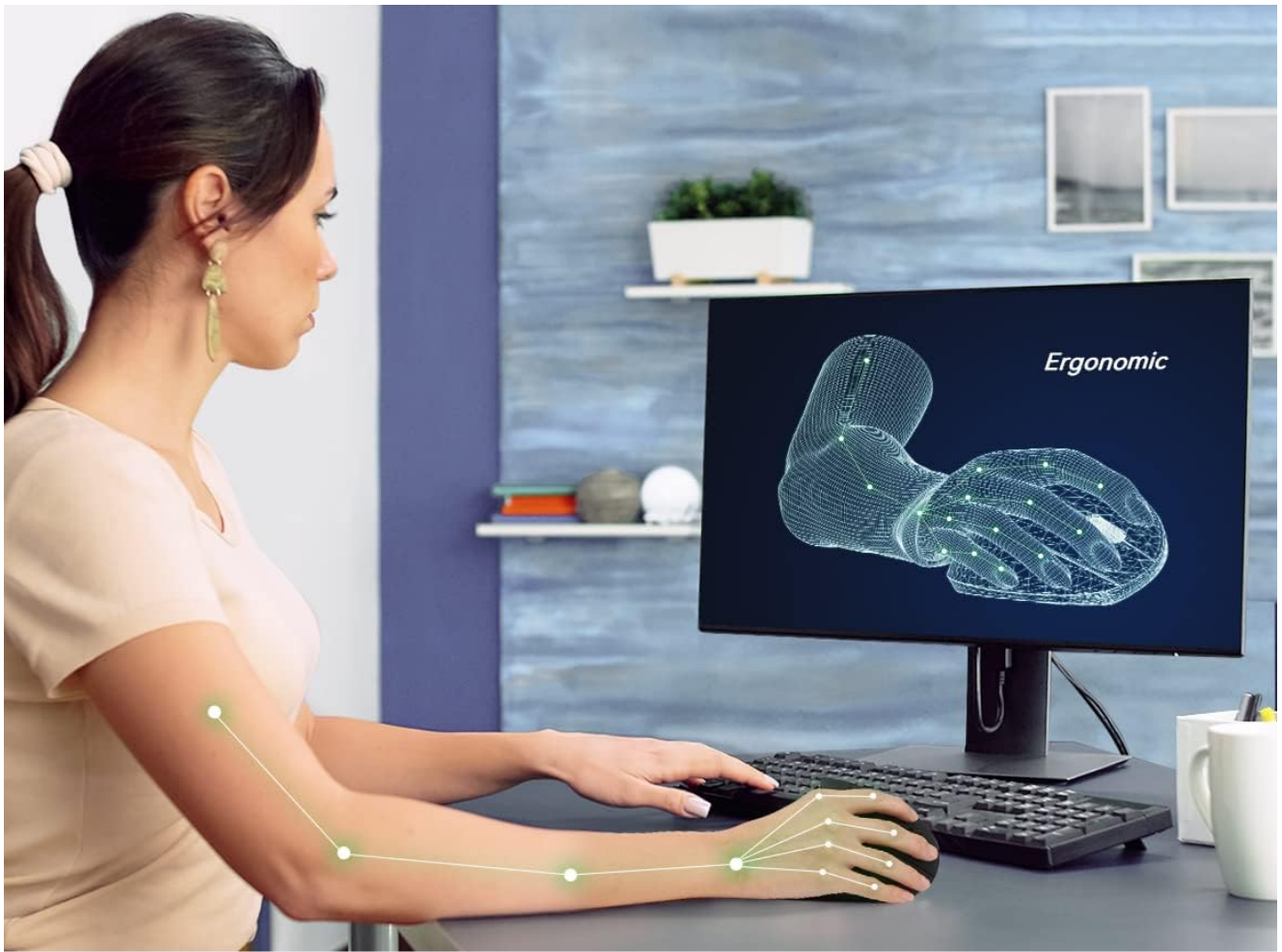
Image: The TECKNET Ergonomic Wireless Vertical Mouse in Deep Black, showcasing its unique vertical design and the included USB receiver.

2. WHAT'S IN THE BOX

- TECKNET Ergonomic Wireless Vertical Mouse
- Micro USB receiver
- User Manual (this document)

3. KEY FEATURES

- **Ergonomic Vertical Design:** Reduces arm and wrist muscle tension for comfortable movement and less stress.
- **Adjustable DPI:** Features an optical sensor with 5 adjustable DPI levels (800/1600/2400/3200/4800) for precise control on various surfaces.
- **Quiet Click Design:** Clicking noise is reduced by over 90% for a quieter work environment.
- **Convenient Navigation Buttons:** Includes forward/back buttons to improve efficiency when browsing. (Note: Side buttons are not compatible with Mac or iOS systems).
- **Energy Saving Mode:** Automatically enters sleep mode after 8 minutes of inactivity to conserve battery life.
- **Wide Compatibility:** Compatible with Windows 11/10/8/7/XP/Vista, Mac OS, and Linux.
- **Wireless Freedom:** 2.4GHz wireless connection with a range of up to 15 meters.



Ergonomic Design

Ergonomic mouse reduces wrist pain



Image: Illustration demonstrating the ergonomic benefits of the vertical mouse compared to a traditional mouse, highlighting reduced wrist strain.



Noiseless Click Enjoy the Silence



Image: A person using the TECKNET mouse on a laptop, illustrating the quiet click feature in a study or office setting.

4. SETUP GUIDE

4.1. Battery Installation

1. Locate the battery compartment on the underside of the mouse.
2. Open the battery compartment cover.

3. Insert two (2) AAA batteries, ensuring correct polarity (+/-). Batteries are not included.
4. Close the battery compartment cover.

Note: We recommend using branded batteries for optimal performance and battery life. An LED light will flash when the battery is low.



(Note: This light doesn't support steady illumination.)



2.4G
Wireless Mouse



2 x AAA
Battery (Not Included)



Image: Underside view of the mouse showing the battery compartment and the storage slot for the USB receiver.

4.2. Connecting the USB Receiver

1. Remove the Micro USB receiver from its storage slot on the underside of the mouse.
2. Plug the USB receiver into an available USB-A port on your computer.
3. The mouse is plug-and-play and should be recognized automatically by your operating system.

Important: If your device does not have a USB-A port (e.g., some newer MacBooks), a network adapter (USB-C to USB-A) is required to connect and use the mouse.

Video: An official TECKNET video demonstrating the ergonomic design, silent click, adjustable DPI, battery installation, and USB receiver connection of the mouse. This video highlights key features and ease of setup.

5. OPERATING INSTRUCTIONS

5.1. DPI Adjustment

The mouse features 5 adjustable DPI levels to suit your preference and task. Press the DPI button, usually located near the scroll wheel, to cycle through the settings:

- 800 DPI (Home/Precise tasks)
- 1600 DPI
- 2400 DPI (Office/General use)
- 3200 DPI
- 4800 DPI (Design/Fast movement)

Adjust the DPI setting to control the cursor speed and sensitivity on your screen.

5 Adjustable DPI

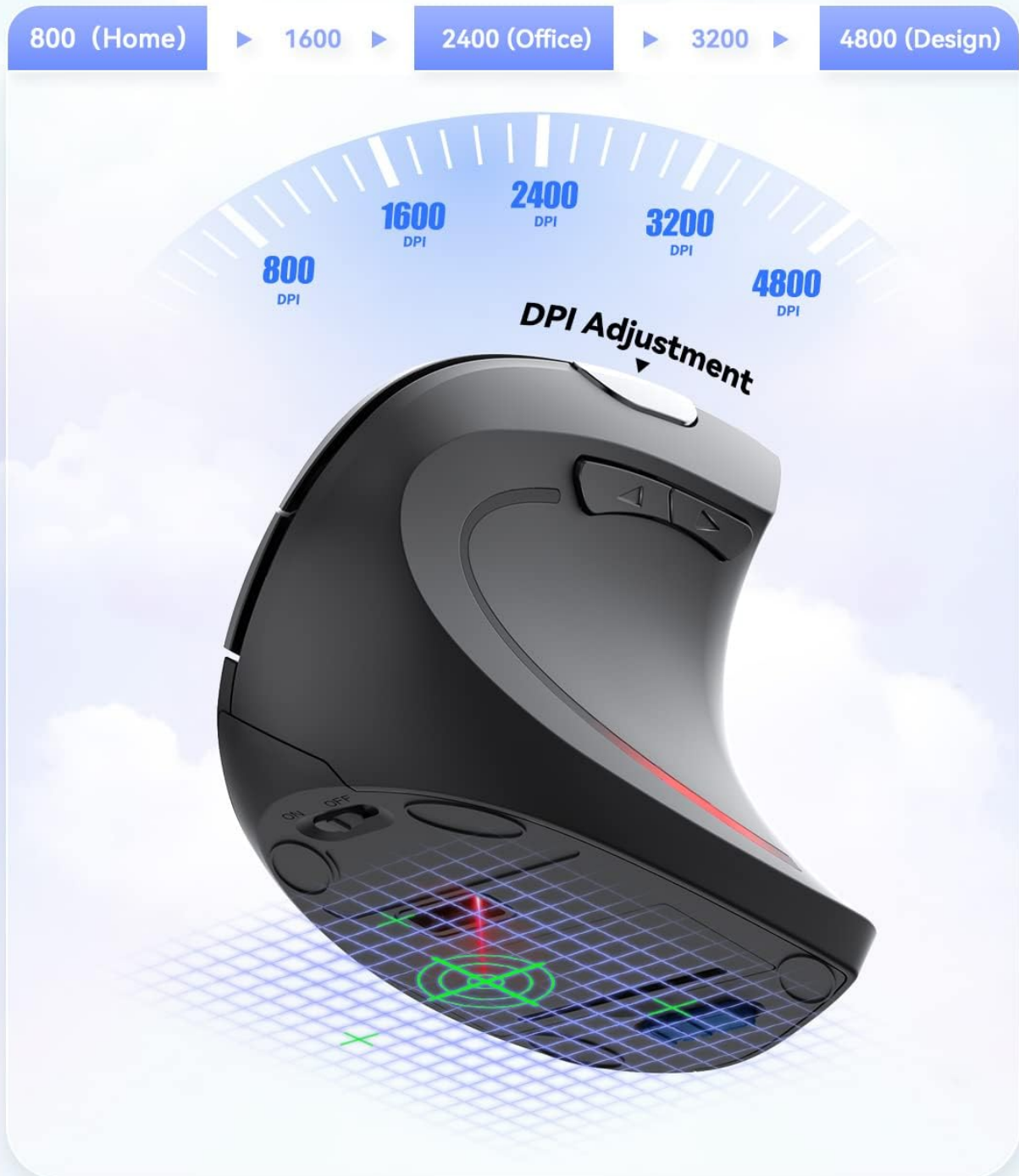


Image: Graphic illustrating the 5 adjustable DPI levels (800, 1600, 2400, 3200, 4800) and the DPI adjustment button on the mouse.

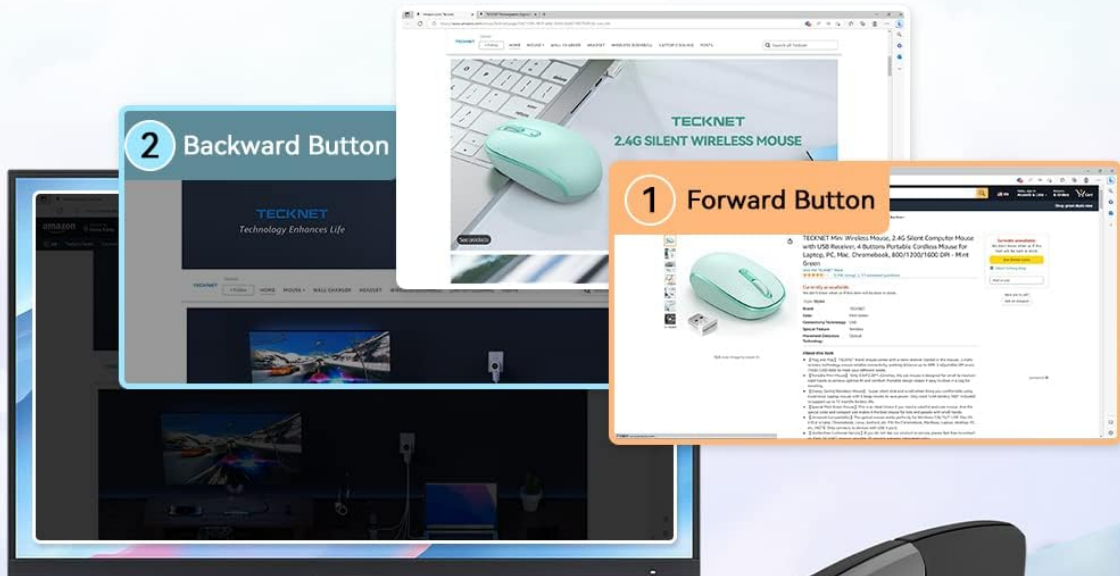
5.2. Forward/Backward Buttons

The mouse is equipped with dedicated forward and backward buttons, typically located on the side, to enhance browsing efficiency. These buttons allow for quick navigation in web browsers and file explorers.

Note: The side buttons are not functional with Mac or iOS operating systems.

Forward and Backward Keys

Making them Easily Accessible
and Convenient to Use.



- 1 Forward Button
- 2 Backward Button



Side Buttons Unavailable for Mac OS

Image: Diagram showing the location of the forward and backward buttons on the mouse and their function in web browsing.

5.3. Energy Saving

To conserve battery power, the mouse will automatically enter a sleep mode after 8 minutes of inactivity. To wake the mouse, simply press the left or right button.

6. MAINTENANCE

- Keep the mouse clean by wiping it with a soft, dry cloth.
- Avoid exposing the mouse to extreme temperatures, humidity, or direct sunlight.
- Do not disassemble the mouse, as this will void the warranty.
- Ensure the optical sensor on the bottom of the mouse is clean for accurate tracking.

7. TROUBLESHOOTING

- **Mouse cursor moves too fast or too slow:** Adjust the DPI level using the DPI button on the mouse. Refer to section 5.1 for details.
- **Difficulty moving the mouse smoothly:** It is recommended to use the mouse with a mouse pad for optimal tracking performance.
- **Side buttons not working:** The forward/back buttons are not compatible with Mac or iOS systems. This is expected behavior.
- **Mouse not responding:**
 - a. Check if the batteries are correctly installed and have sufficient charge. Replace if necessary.
 - b. Ensure the USB receiver is securely plugged into a working USB port on your computer.
 - c. Verify that the mouse is within the 15-meter wireless range of the receiver.
 - d. Try plugging the USB receiver into a different USB port.
- **LED light flashing:** This indicates that the battery is low and needs to be replaced soon.

8. SPECIFICATIONS

Feature	Detail
Product Dimensions	4.71 x 2.47 x 0.1 inches
Item Weight	4.2 ounces
Item Model Number	TK-MS007
Batteries Required	2 AAA batteries (not included)
Connectivity Technology	2.4GHz Wireless (USB-A receiver)
Movement Detection Technology	Optical
DPI Levels	800/1600/2400/3200/4800
Special Features	Ergonomic Design, Soundless Click, Wireless
Compatibility	Windows 11/10/8/7/XP/Vista, Mac OS, Linux
Manufacturer	TECKNET
Date First Available	November 5, 2024

9. WARRANTY & SUPPORT

TECKNET provides **36-Month Support** for this product (registration may be required). If you encounter any problems during the use of your TECKNET Ergonomic Wireless Vertical Mouse, please reach out to the TECKNET

Professional Customer Service team for assistance.

For further support and product information, please visit the official TECKNET website or contact their customer service directly.