



Manuals.plus /

› KETOTEK /

› KETOTEK Smart Thermostat for Electric Underfloor Heating 16A, Digital WiFi Room Thermostat Compatible with Alexa Smart Life App, Programmable Thermostat with NTC Probe Sensor 16A Electric Heating Thermostat

KETOTEK KTF0176A

KETOTEK Smart Thermostat User Manual

Model: KTF0176A

1. INTRODUCTION

This user manual provides comprehensive instructions for the installation, operation, and maintenance of your KETOTEK Smart Thermostat (Model: KTF0176A). This Wi-Fi enabled thermostat is designed for electric underfloor heating systems and offers advanced control features, including compatibility with Alexa and the Smart Life/Tuya app. Please read this manual thoroughly before installation and use to ensure safe and efficient operation.

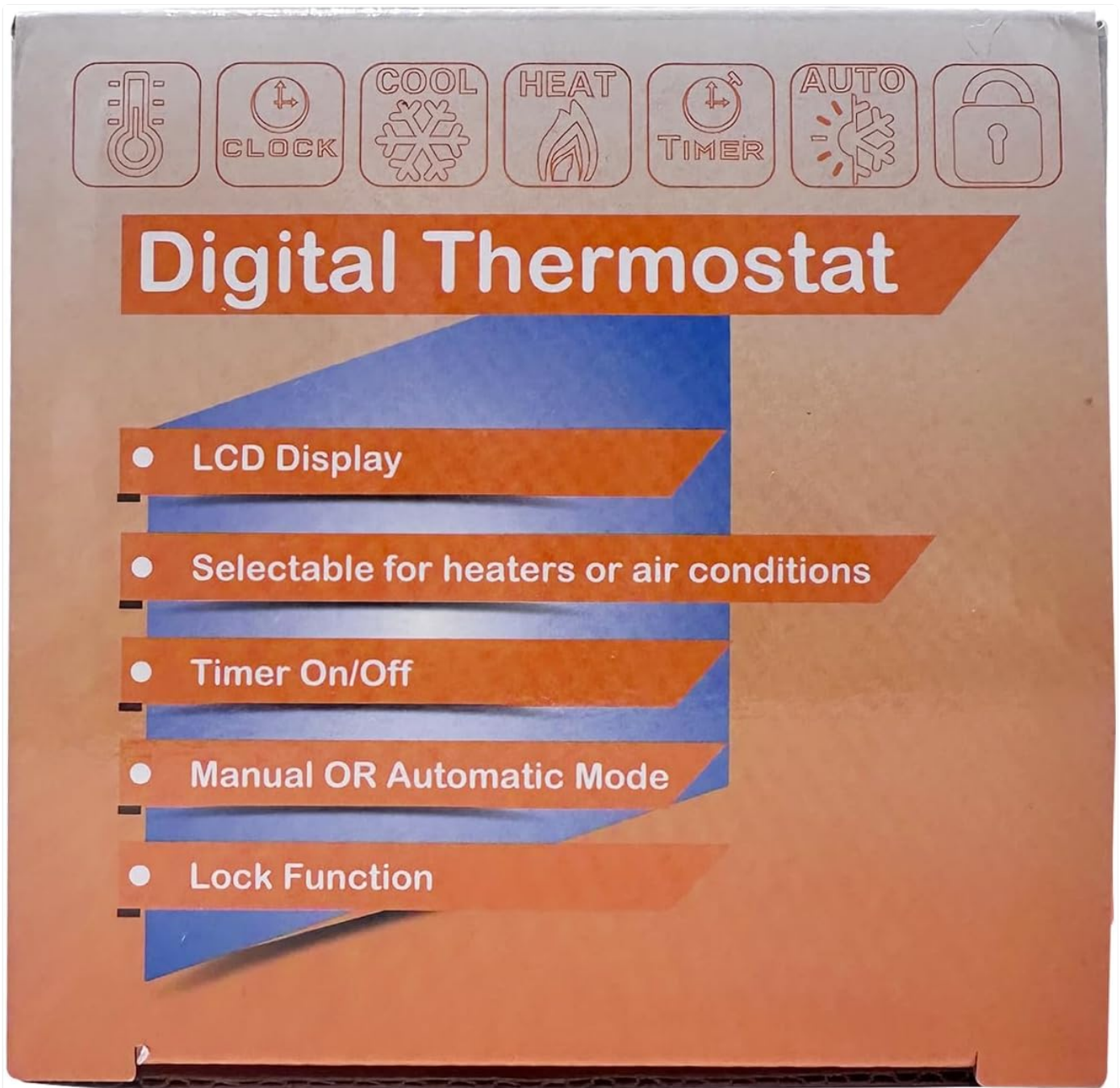


Figure 1: KETOTEK Smart Thermostat for Electric Underfloor Heating.

2. SAFETY INFORMATION

Important Safety Instructions:

- **Professional Installation Required:** The installation of this thermostat involves high voltage wiring. It must be installed by a qualified electrician in accordance with all local electrical codes and regulations.
- **Power Disconnection:** Always disconnect power at the circuit breaker before installing, cleaning, or servicing the thermostat. Failure to do so can result in electric shock or serious injury.
- **Voltage and Current:** Ensure the thermostat's voltage (AC 90~240V 50/60Hz) and maximum current (16A) are compatible with your electric underfloor heating system.
- **Child Safety:** Keep the thermostat out of reach of children. Utilize the child lock function to prevent unauthorized changes to settings.
- **Environmental Conditions:** Do not expose the thermostat to excessive moisture, dust, or extreme temperatures.

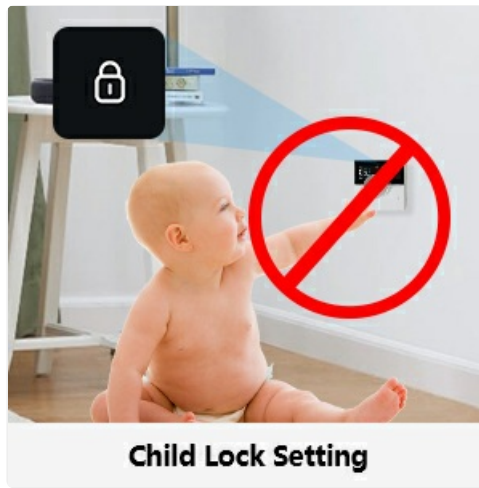


Figure 2: Child Lock Setting for enhanced safety.

3. PRODUCT OVERVIEW

The KETOTEK Smart Thermostat features a modern design with an intuitive display and a rotary knob for easy interaction. It is equipped with dual sensors for accurate temperature measurement and protection.

3.1. Components

- Thermostat Unit (flush-mounted)
- 2.5m External NTC Probe Sensor
- Mounting Screws (2x)
- Instruction Manual (this document)

3.2. Display and Controls

The thermostat's display provides real-time information and allows for easy configuration.



Figure 3: Front view of the KETOTEK Smart Thermostat.



Figure 4: Thermostat Display Indicators.

- **Setting Temperature:** Desired temperature.
- **Week:** Current day of the week.
- **Lock:** Indicates if child lock is active.
- **Clock:** Current time.
- **Wifi Status:** Connectivity status.
- **Window Function:** Indicates open window detection.
- **Cooling Mode:** Icon for cooling operation (if applicable, though this model is for heating).
- **Heating Mode:** Icon for heating operation.
- **Manual Mode:** Indicates manual control.
- **Program Mode:** Indicates scheduled program control.
- **Holiday Mode:** Indicates holiday schedule is active.

4. SETUP AND INSTALLATION

The KETOTEK Smart Thermostat is designed for flush mounting into a standard 86mm or European 60mm pattress box.

4.1. Wiring Diagram

Refer to the wiring diagram on the back of the thermostat unit and consult a qualified electrician for proper installation. Ensure all connections are secure and comply with local electrical codes.

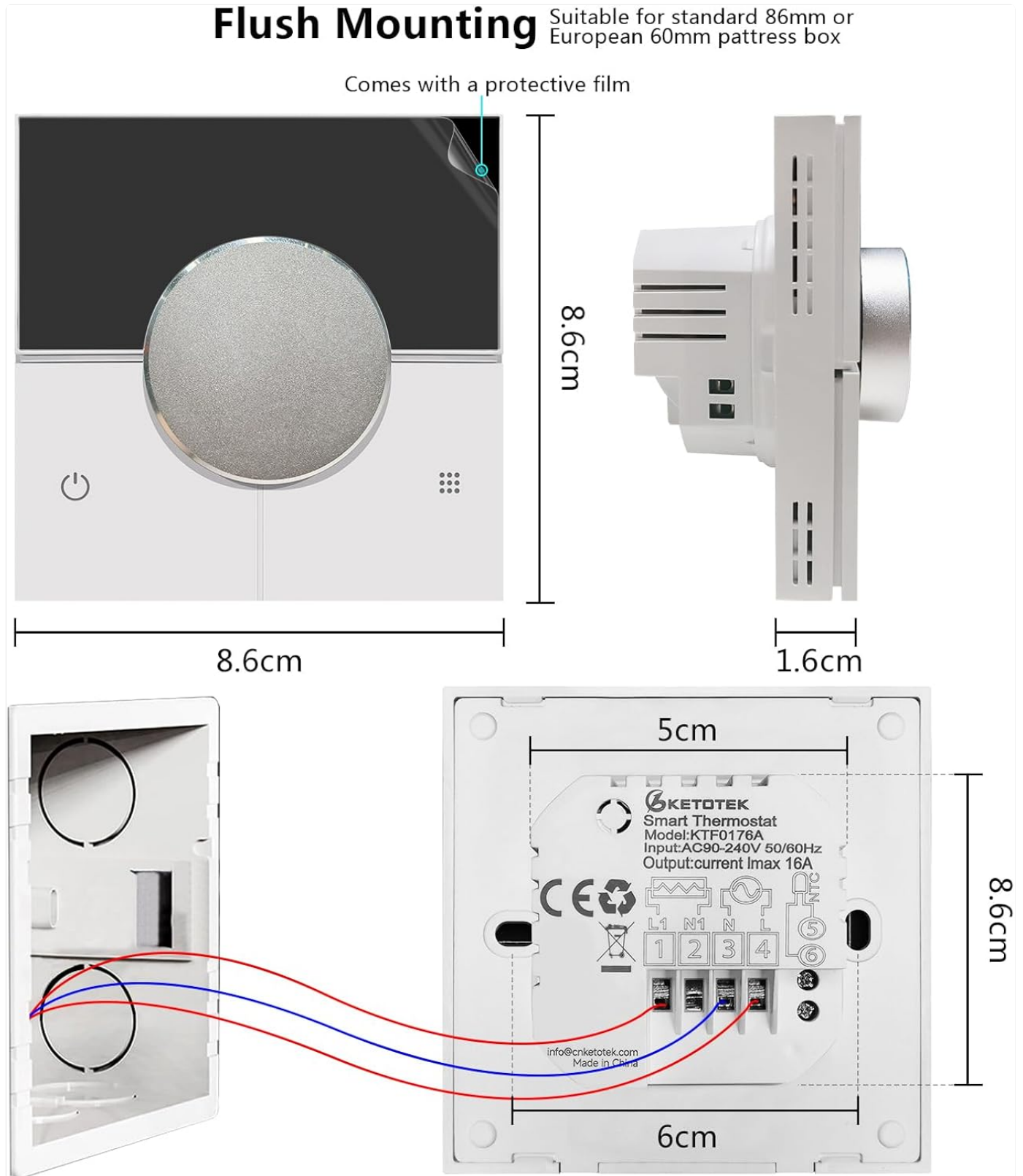


Figure 5: Thermostat Dimensions and Wiring Connections.

Note on Wiring: For certain boiler systems requiring a 240V return to activate, a link may need to be fitted between the incoming live and the 'dry contact' pin 5, with the return to the boiler then connected to pin 6. Always verify your specific heating system's requirements.

4.2. Initial Power On and Wi-Fi Connection

After successful installation and power-on, the thermostat will be ready for Wi-Fi configuration.

1. Download the "Smart Life" or "Tuya Smart" app from your mobile device's app store.
2. Register or log in to your account.
3. Follow the in-app instructions to add a new device. The thermostat typically enters pairing mode automatically upon first power-on or by holding a specific button (refer to the app's guide for exact pairing steps).
4. Ensure your Wi-Fi network is 2.4 GHz, as the thermostat requires this frequency for connection.
5. Once connected, you can control the thermostat remotely via the app.



Figure 6: App Remote Control via Smart Life/Tuya.

5. OPERATING INSTRUCTIONS

The KETOTEK Smart Thermostat offers various operating modes and functions to optimize your heating.

5.1. Operating Modes

The thermostat supports three primary operating modes:

- **Manual Mode:** Allows you to set a constant temperature that the thermostat will maintain until changed.
- **Programming Mode:** Enables scheduling of different temperatures for various times of the day and week.
- **Holiday Mode:** Maintains a set temperature for a specified duration, ideal for when you are away.

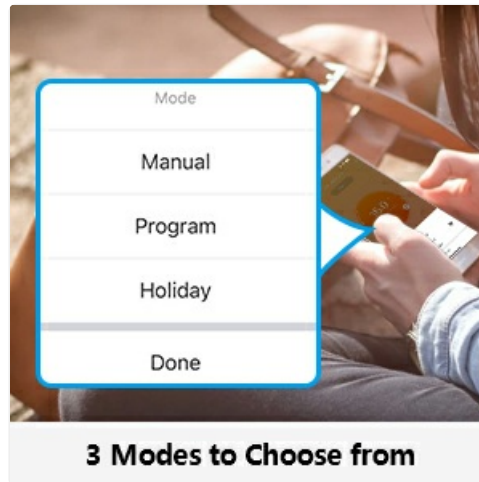


Figure 7: Selecting Operating Modes via App.

5.2. Programmable Settings

In Programming Mode, you can customize your heating schedule with up to 6 periods per day, across different weekly configurations:

- **5+2 Days:** Weekdays (Mon-Fri) with one schedule, and Weekend (Sat-Sun) with another.
- **6+1 Days:** Weekdays (Mon-Sat) with one schedule, and Sunday with another.
- **7 Days:** Each day of the week can have its own unique schedule.

Programmable Thermostat

3 weekly cycle digital programming modes and 6 time slots to choose from

											
Wake up	Out door	Back home	Out door	Back home	Sleep						
6:00	20°C	8:00	15°C	11:30	15°C	13:30	15°C	17:00	15°C	22:00	15°C



5 days + 2 days | 6 days + 1 days | 7 days

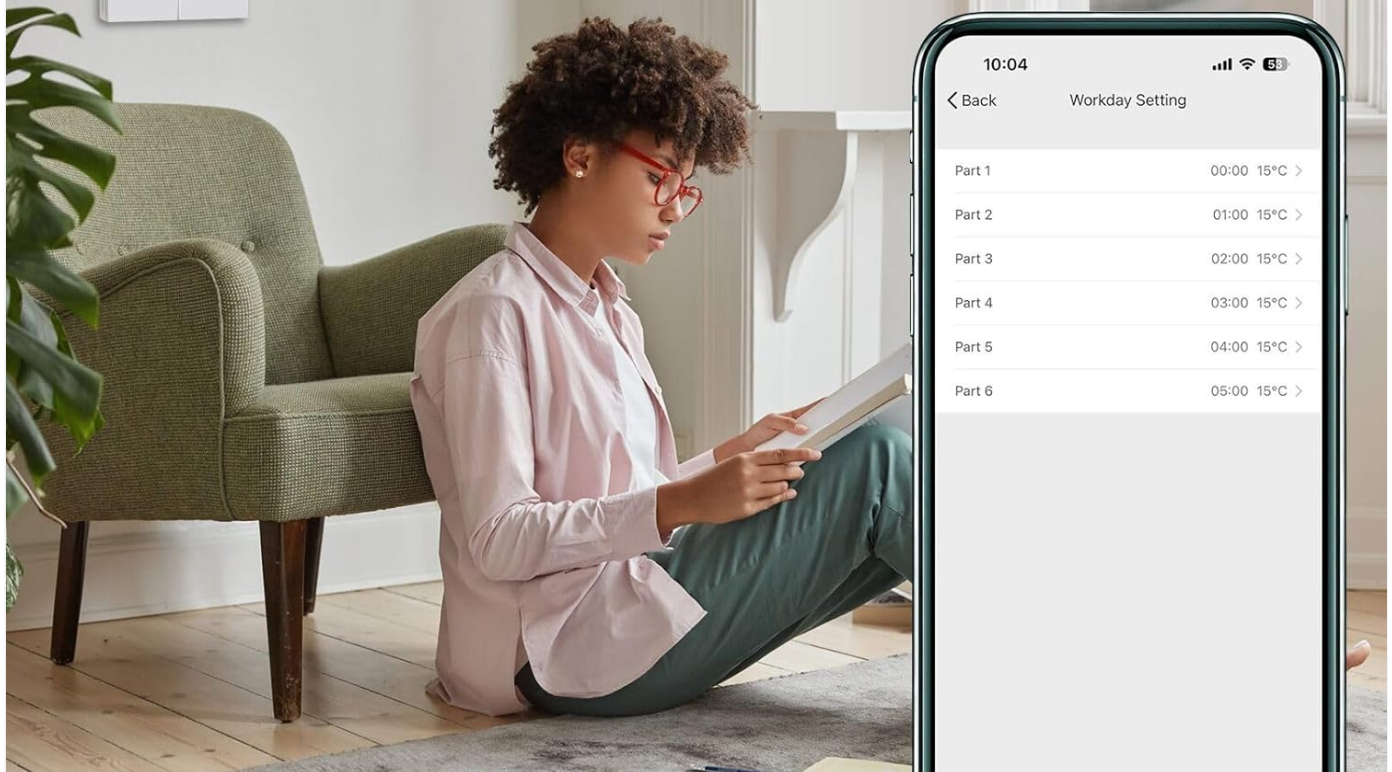
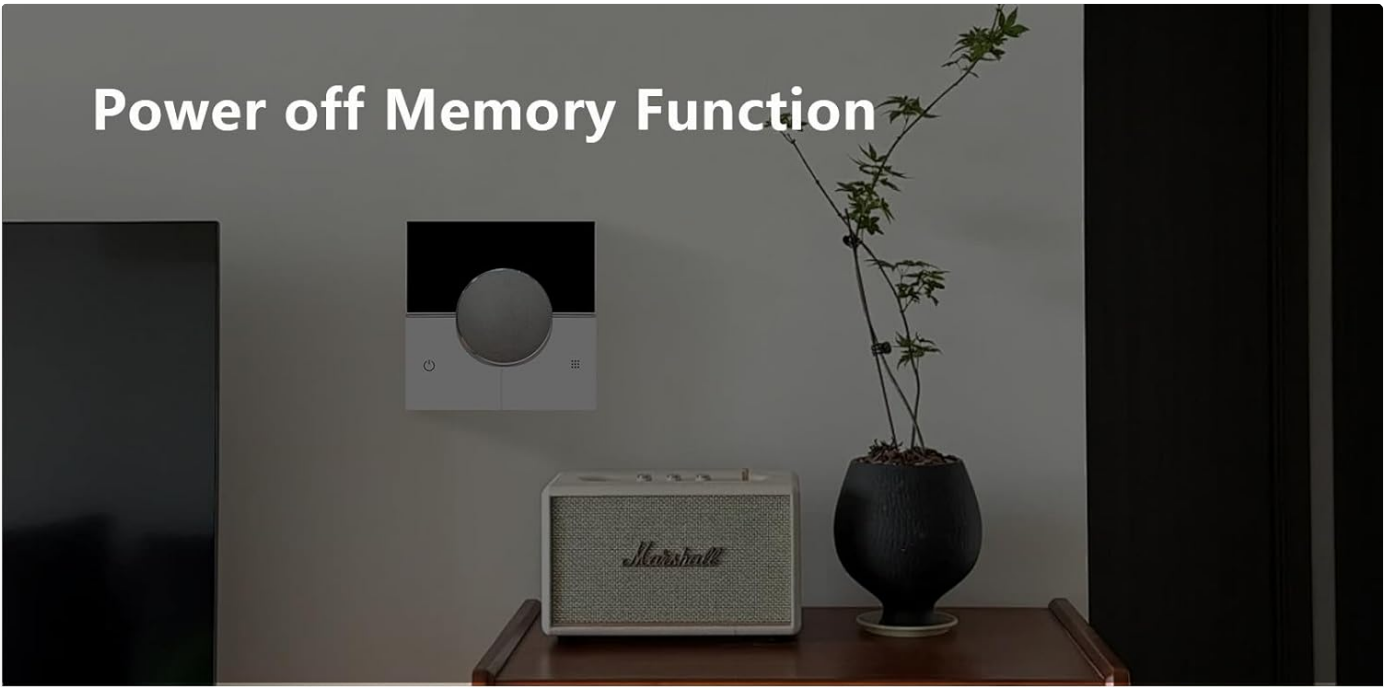


Figure 8: Programmable Thermostat Scheduling.

5.3. Advanced Functions

- **Temperature Calibration:** Adjust the temperature reading for accuracy (Differential calibration: -9.9°C to 9.9°C).
- **Power Off Memory Function:** The thermostat retains settings even after a power outage.
- **Child Lock:** Prevents unauthorized access to settings.
- **Window Function:** Automatically detects open windows and temporarily pauses heating to save energy.
- **High/Low Temperature Protection:** Safeguards your system from extreme temperatures.
- **Start Temperature Difference:** Configurable hysteresis for heating activation.
- **Backlight Sleep Setting & Adjustable Brightness:** Customize display illumination.
- **Restore Factory Settings:** Option to reset all configurations.
- **Device Status When Switching On:** Configure the thermostat's behavior upon power restoration.
- **Device Sharing:** Share control of the thermostat with family members via the app.

Power off Memory Function



Temperature can be Manually Calibrated



Figure 9: Power Off Memory and Temperature Calibration.

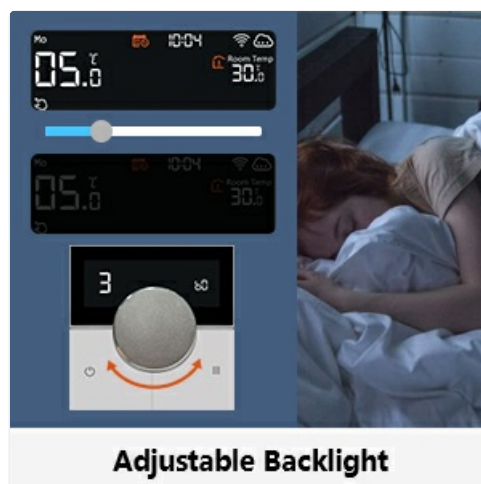


Figure 10: Adjustable Backlight.



Figure 11: Device Sharing Function.

6. MAINTENANCE

The KETOTEK Smart Thermostat requires minimal maintenance.

- **Cleaning:** Gently wipe the thermostat's surface with a soft, dry cloth. Do not use abrasive cleaners, solvents, or spray directly onto the unit.
- **Sensor Care:** Ensure the external NTC probe sensor is not damaged or obstructed, as this can affect temperature readings.
- **Software Updates:** Periodically check the Smart Life/Tuya app for available firmware updates to ensure optimal performance and access to new features.

7. TROUBLESHOOTING

If you encounter issues with your KETOTEK Smart Thermostat, refer to the following common problems and solutions:

Problem	Possible Cause	Solution
Thermostat not powering on.	No power supply; incorrect wiring.	Check circuit breaker. Verify wiring connections with a qualified electrician.
Cannot connect to Wi-Fi.	Incorrect Wi-Fi password; 5GHz network; thermostat too far from router.	Ensure correct 2.4 GHz Wi-Fi network and password. Move thermostat closer to router or use a Wi-Fi extender. Re-initiate pairing mode.
Temperature reading is inaccurate.	Sensor issue; need for calibration.	Check external sensor for damage or obstruction. Use the temperature calibration function in settings.
Heating not activating as scheduled.	Incorrect programming; holiday mode active; child lock active.	Review your programming schedule in the app. Deactivate holiday mode. Disable child lock if necessary.
Thermostat display is too bright/dim.	Backlight settings.	Adjust the backlight brightness and sleep settings in the thermostat's menu or app.
Screws supplied do not fit UK back box.	Incompatible screw thread.	Use appropriate screws compatible with UK plasterboard back boxes.

8. SPECIFICATIONS

Feature	Detail
Model	KTF0176A
Brand	KETOTEK
Voltage	AC 90~240V 50/60Hz
Max Current	16A
Temperature Setting Range	1°C~70°C (Default: 5°C~35°C)
Temperature Display Accuracy	0.5°C
External Sensor Cable Length	2.5m
Connectivity	Wi-Fi (2.4 GHz only)
Controller Type	Amazon Alexa, Smart Life/Tuya App
Dimensions	86 x 86 x 17mm (Thermostat unit)
Item Weight	230 g
Special Features	Remote Access & Control via App, Holiday Mode, Window Function, Temperature Calibration, Power Off Memory, Child Lock

9. WARRANTY INFORMATION

Specific warranty details for the KETOTEK Smart Thermostat are not provided in this manual. Please refer to the product packaging, the manufacturer's official website, or contact your point of purchase for comprehensive warranty terms and conditions. Keep your purchase receipt as proof of purchase for any warranty claims.

10. CUSTOMER SUPPORT

For technical assistance, troubleshooting beyond this manual, or general inquiries, please contact KETOTEK customer support.

- **Manufacturer:** Xiamen Atfinger Technology Co., Ltd
- **Website:** www.ketotek.cc
- **Email:** info@ketotek.com
- **EU Representative:** e-Vatmaster Consulting GmbH, Bettinastr.30, 60325 Frankfurt am Main, Germany
- **UK Representative:** e-Vatmost Consulting Ltd, Office 101 32 Threadneedle street, London, United Kindom, EC2R 8AY

You can also refer to the contact information provided on the product packaging.



Figure 12: Manufacturer and Contact Information on Packaging.