



[Manuals.plus](#) /

› [ANNKE](#) /

› ANNKE AU-N48WHR1-V2-74GK-V1-OP Wireless 3MP IP Camera System User Manual

## ANNKE AU-N48WHR1-V2-74GK-V1-OP

# ANNKE Wireless 3MP IP Camera System User Manual

Model: AU-N48WHR1-V2-74GK-V1-OP

## 1. INTRODUCTION

---

This manual provides detailed instructions for the ANNKE Wireless 3MP IP Camera System. This system includes 4 wireless 3MP IP cameras and a 10-channel 5MP NVR, designed for comprehensive home security. Key features include 2K 3MP Super HD video, 100 ft night vision, smart AI person detection, two-way audio, and compatibility with Amazon Alexa.

For optimal performance and safety, please read this manual thoroughly before installation and operation. Keep this manual for future reference.

# 2K Super HD Clarity

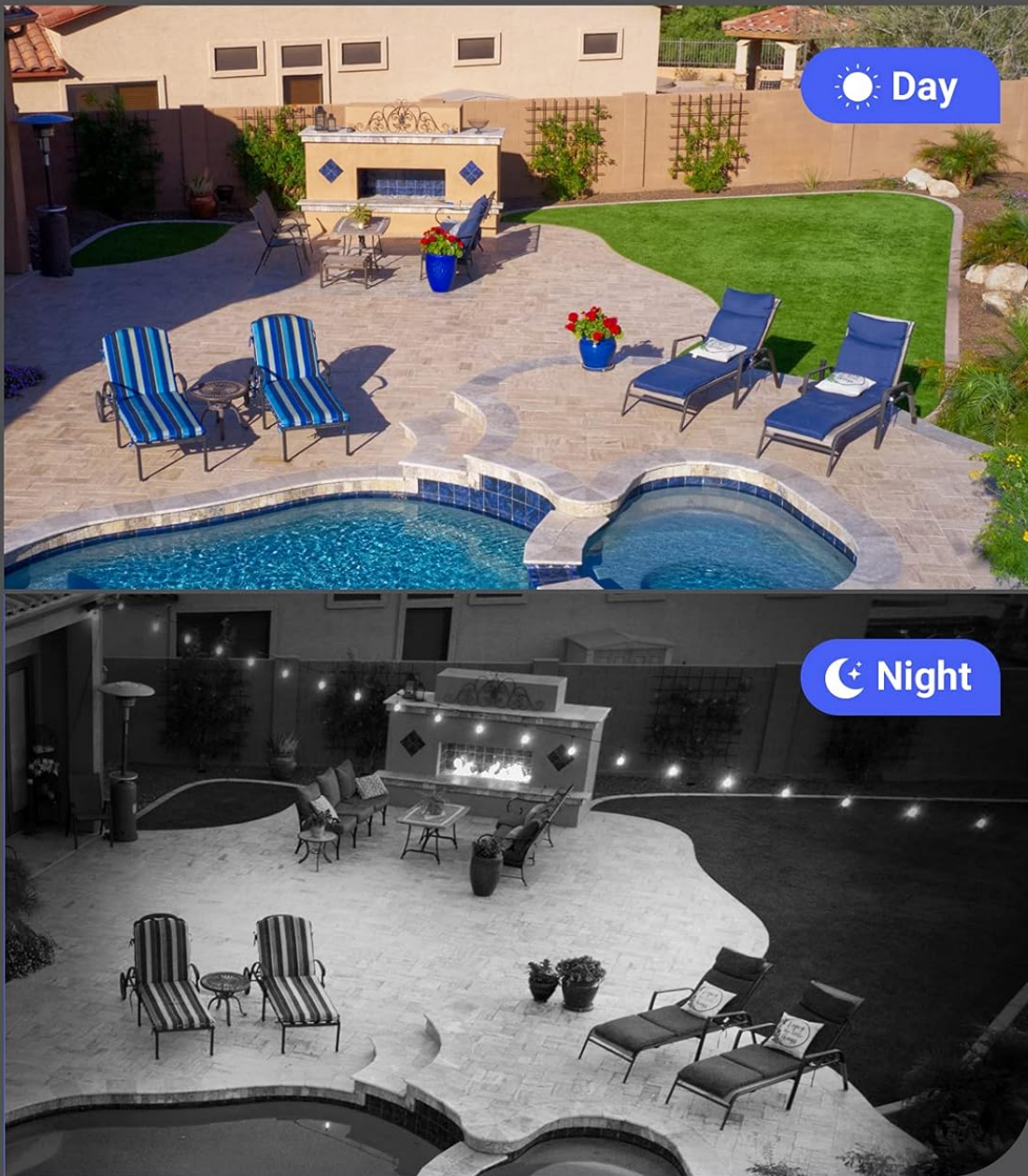


Image 1.1: Overview of the ANNKE Wireless 3MP IP Camera System, showing the NVR and four cameras.

## 2. PACKAGE CONTENTS

Verify that all items listed below are included in your package. If any items are missing or damaged, please contact ANNKE customer support.

- 1x 10CH 5MP NVR (Network Video Recorder)
- 4x Security Cameras (3MP Wireless IP Cameras)
- 5x Power Adapters (one for NVR, four for cameras)
- 1x 3m Antenna Extension Cable

- 1x USB Mouse



3MP

3MP Full HD  
Cameras

5MP

5MP Super HD  
NVR

1000ft

1,000 ft WiFi  
Connection

IP66

IP66  
Waterproof



Smart Auto  
Tracking

Image 2.1: The Network Video Recorder (NVR) and four wireless cameras included in the system.

## 3. SETUP

The ANNKE Wireless IP Camera System is designed for easy plug-and-play setup. Follow these steps to get your system operational.

### 3.1 Initial Connection

1. **Power On NVR and Cameras:** Connect the provided power adapters to the NVR and each camera, then plug them into electrical outlets. The cameras and NVR will automatically pair.
2. **Connect NVR to Display:** Use an HDMI or VGA cable (not included) to connect the NVR to a TV or monitor.
3. **Connect USB Mouse:** Plug the included USB mouse into the NVR's USB port for navigation.

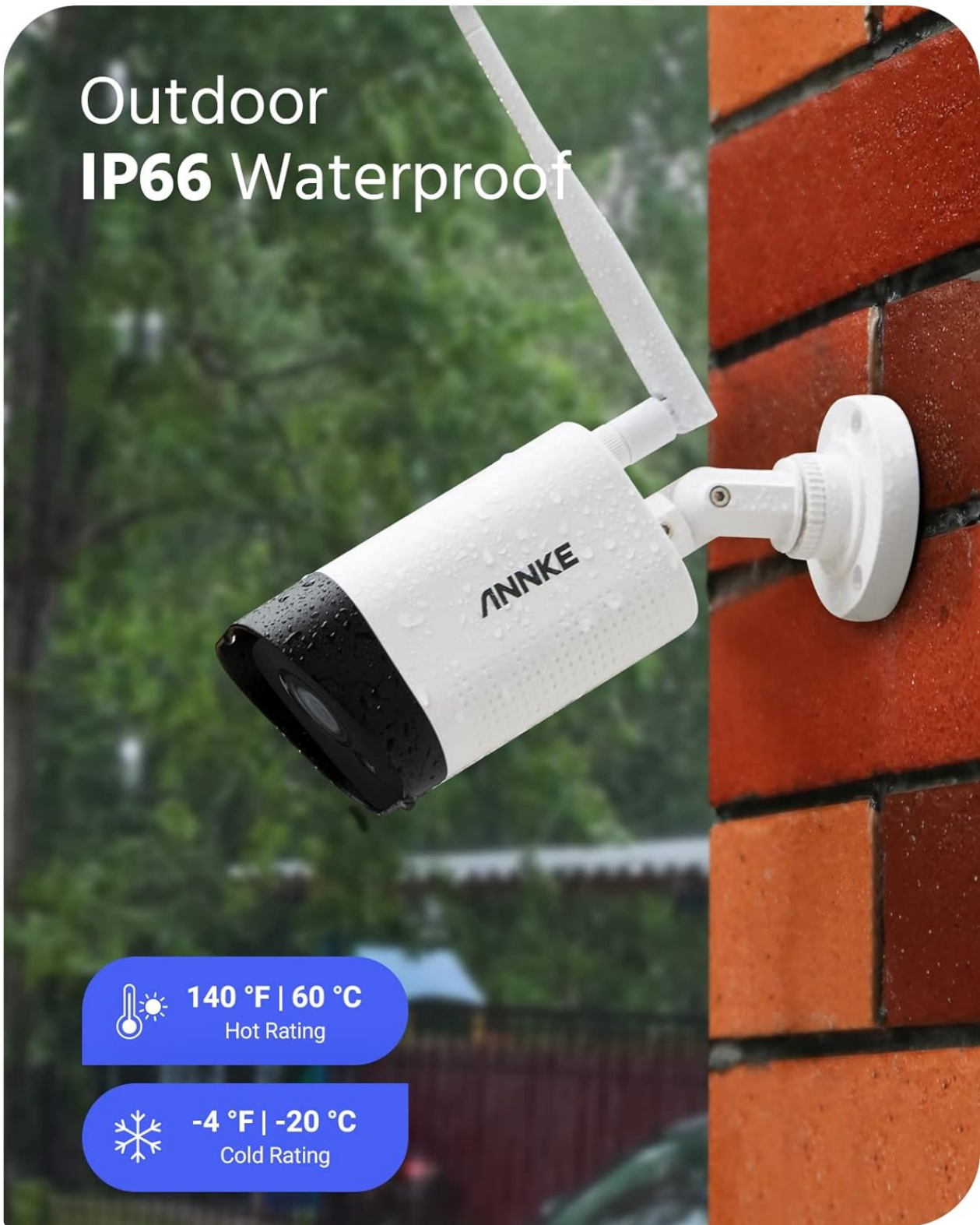


Image 3.1: Visual guide for the initial plug-and-play setup, showing connections for NVR and cameras.

### 3.2 Mobile App Setup

1. **Download ANNKE Sight App:** Search for "ANNKE Sight" in your smartphone's app store (Google Play Store or Apple App Store) and install it.
2. **Register/Log In:** Open the app and create a new account or log in with an existing one.
3. **Add System:** Follow the in-app instructions to add your ANNKE NVR system. This typically involves scanning a QR code on the NVR or manually entering device details.
4. **Live Stream:** Once added, you can view live streams from your cameras and manage settings remotely.

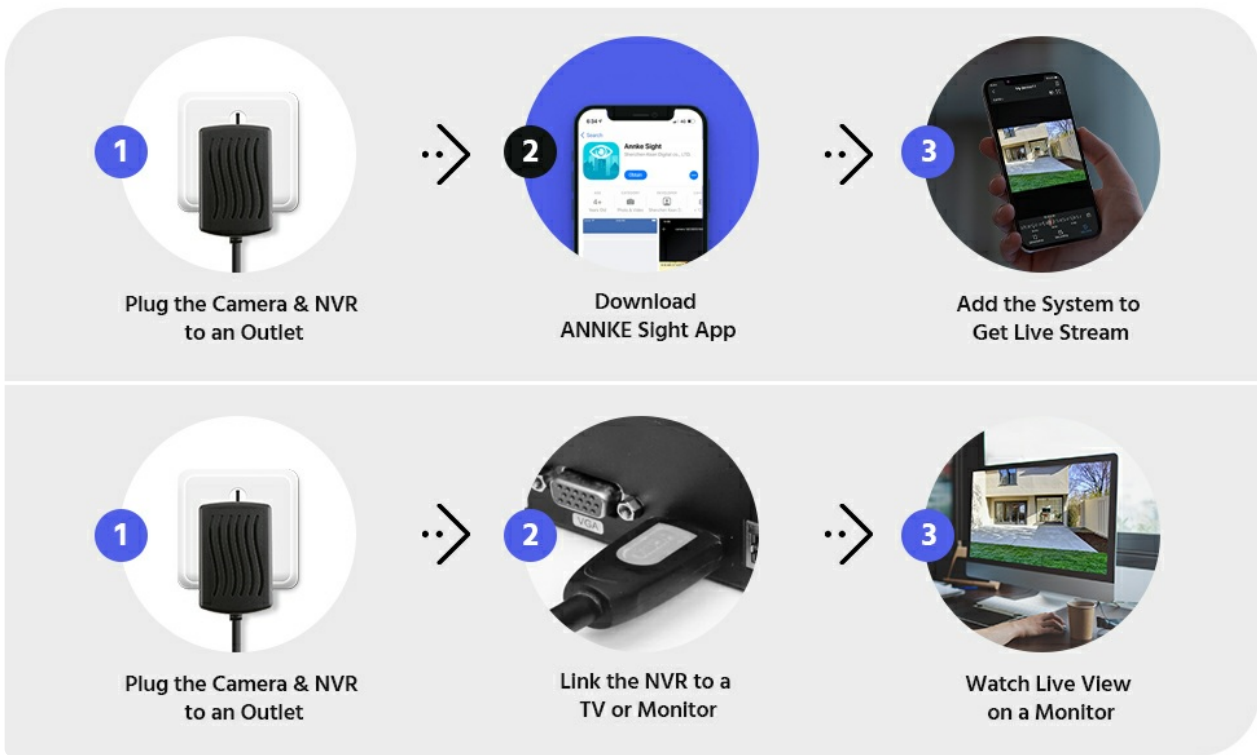


Image 3.2: Step-by-step guide for setting up the ANNKE system, including downloading the ANNKE Sight app and connecting to a monitor.

### 3.3 Video Guide

Your browser does not support the video tag.

Video 3.1: An official video demonstrating the setup and key features of the ANNKE 10 Channel 3MP Security Camera System.

## 4. OPERATING INSTRUCTIONS

This section covers the main operational features of your ANNKE security system.

### 4.1 Video Monitoring and Clarity

The system provides stunning 2K 3MP Super HD video resolution, offering clear and detailed footage. The cameras also feature advanced night vision capabilities, extending up to 100 feet (30 meters) for round-the-clock surveillance.



Image 4.1: Comparison of day and night footage, demonstrating the 2K Super HD clarity of the cameras.

## 4.2 Smart AI Person Detection

Utilize the advanced AI algorithms for accurate person detection. The system can differentiate humans from other moving objects, reducing false alarms. You will receive app notifications and email alerts only when a person triggers the detection.

- **Customized Motion Areas:** Define specific zones within the camera's view where motion detection should be active, ignoring irrelevant areas.



Image 4.2: Illustration of the AI Person Detection feature, accurately identifying a person in the surveillance area.

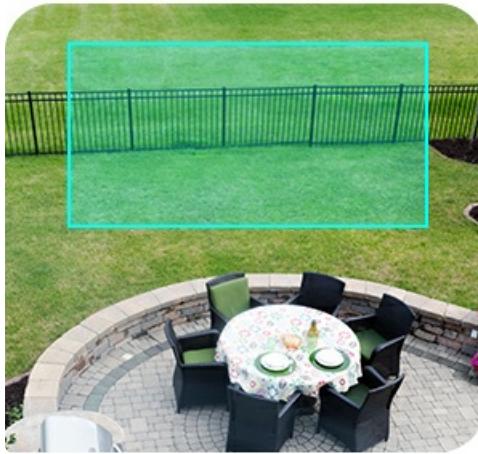


Image 4.3: Example of a customized motion detection area, allowing users to specify regions for alerts.

### 4.3 Two-Way Audio

Each camera is equipped with a built-in microphone and speaker, enabling real-time two-way audio communication. You can listen to sounds from the camera's location and speak through the camera using the mobile app.

# Easy Plug & Play Setup



Plug in the  
NVR



Plug in the  
Camera



Link the NVR to  
a TV or Monitor



Image 4.4: A user interacting with the two-way audio feature via their smartphone, showing communication with someone near the camera.

## 4.4 Smart Home Compatibility (Alexa)

The system is compatible with Amazon Alexa, allowing for hands-free voice control. Connect your ANNKE system to your Alexa device to view live camera feeds with simple voice commands.

# Remote Access with All Devices



Image 4.5: A user demonstrating Alexa compatibility by requesting a live view from a camera on an Echo Show device.

## 4.5 Remote Access

Access your security system remotely from various devices, including smartphones, tablets, and personal computers, using the ANNKE Sight app or client software. This allows you to monitor your property from anywhere with an internet connection.

# Product Size



Image 4.6: Depiction of remote access capabilities, showing live feeds on a smartphone, tablet, and computer monitor.

## 5. MAINTENANCE

Proper maintenance ensures the longevity and optimal performance of your security system.

- **Regular Cleaning:** Periodically clean the camera lenses with a soft, dry cloth to ensure clear image quality.
- **Firmware Updates:** Check for and install firmware updates for the NVR and cameras through the ANNKE Sight app or NVR interface to ensure the latest features and security patches.
- **Weather Protection:** The cameras are IP66 weatherproof, designed to withstand various outdoor conditions. However, avoid directing high-pressure water jets directly at the cameras. Ensure all cable connections are secure and protected from moisture.
- **Hard Drive Management:** The 1TB hard drive provides ample storage. Regularly back up important footage and manage storage space as needed.

Image 5.1: The ANNKE camera demonstrating its IP66 weatherproof rating, suitable for outdoor installation in various weather conditions.

## 6. TROUBLESHOOTING

If you encounter issues with your ANNKE security system, refer to the following common troubleshooting steps:

- **No Video Feed:** Ensure all cameras and the NVR are powered on and connected correctly. Check network connectivity for wireless cameras.
- **Poor Image Quality:** Clean camera lenses. Ensure cameras are within optimal range of the NVR for strong wireless signal.
- **No Motion Detection Alerts:** Verify that motion detection is enabled in the NVR settings and the ANNKE Sight app. Check customized motion areas and sensitivity settings.
- **Two-Way Audio Issues:** Ensure microphone and speaker settings are enabled in the app. Check volume levels on your device and the camera.
- **Remote Access Failure:** Confirm your NVR is connected to the internet. Check your router settings and ensure the ANNKE Sight app has necessary network permissions on your smartphone.
- **NVR Not Recording:** Verify the 1TB hard drive is properly installed and initialized. Check recording schedules and ensure there is sufficient storage space.

For further assistance, please contact ANNKE customer support.

## 7. SPECIFICATIONS

Detailed technical specifications for the ANNKE Wireless 3MP IP Camera System.

Feature	Specification
Brand	ANNKE
Model Number	AU-N48WHR1-V2-74GK-V1-OP
Connectivity Technology	Wireless
Video Capture Resolution	3MP (2K Super HD)
Number of Channels	10 (NVR)
Special Features	App Control, Human Detection, Privacy Masking, Two-Way Audio, Weatherproof
Memory Storage Capacity	1 TB (Hard Drive)
Power Source	Corded Electric
Compatible Devices	Laptops, Personal Computers, Smartphones, TV, Tablets
Night Vision Range	30 Meters (100 ft)
Antenna Type	Fixed
Recording Mode	Manual, Schedule
Hardware Interface	802.11 b/g/n (Wi-Fi), USB 2.0
Viewing Angle	70 Degrees
Weatherproof Rating	IP66

Feature	Specification
Operating Temperature	140°F (60°C) to -4°F (-20°C)

# Smart **AI Person** Detection



Image 7.1: Product dimensions for the ANNKE NVR and a single camera unit.

## 8. WARRANTY INFORMATION

ANNKE products typically come with a limited warranty. Please refer to the warranty card included in your product packaging or visit the official ANNKE website for the most current and detailed warranty information. The warranty covers defects in materials and workmanship under normal use.

*Please retain your proof of purchase for warranty claims.*

## 9. CUSTOMER SUPPORT

---

For technical support, troubleshooting assistance, or any questions regarding your ANNKE Wireless 3MP IP Camera System, please contact ANNKE customer support through the following channels:

- **Website:** Visit the official ANNKE support website for FAQs, downloads, and contact forms.
- **Email:** Send an email to ANNKE support for assistance.
- **Phone:** Contact ANNKE customer service by phone during business hours.

*Specific contact details can be found on the ANNKE official website or in your product packaging.*