



Manuals.plus /

› GTYGERIH /

› GTYGERIH Donlim Bread Maker Motor Replacement Manual for DL-T06A, DL-T06S-W, DL-TM018

GTYGERIH DL-T06A/DL-T06S-W/DL-TM018

Donlim Bread Maker Motor Replacement Manual

Models: DL-T06A, DL-T06S-W, DL-TM018

1. INTRODUCTION

This manual provides instructions for the replacement of the motor in specific Donlim bread maker models. This motor is a genuine replacement part designed for compatibility with Donlim models DL-T06A, DL-T06S-W, and DL-TM018. Each motor undergoes professional testing prior to shipment to ensure quality and functionality.

Before proceeding with any replacement, please verify that your bread maker's model number precisely matches one of the compatible models listed above.

2. SAFETY INFORMATION

- **Electrical Hazard:** Always unplug the bread maker from the power outlet before attempting any inspection, repair, or replacement of components. Failure to do so can result in electric shock or serious injury.
- **Qualified Personnel:** Motor replacement should ideally be performed by individuals with experience in appliance repair or electrical work. If you are unsure about any step, consult a qualified technician.
- **Proper Tools:** Use appropriate tools for disassembly and reassembly to prevent damage to the appliance or injury.
- **Component Handling:** Handle the motor and other internal components carefully to avoid damage.
- **Disposal:** Dispose of old components responsibly according to local regulations.

3. PACKAGE CONTENTS

Your package should contain the following item:

- 1 x GTYGERIH Replacement Bread Maker Machine Motor

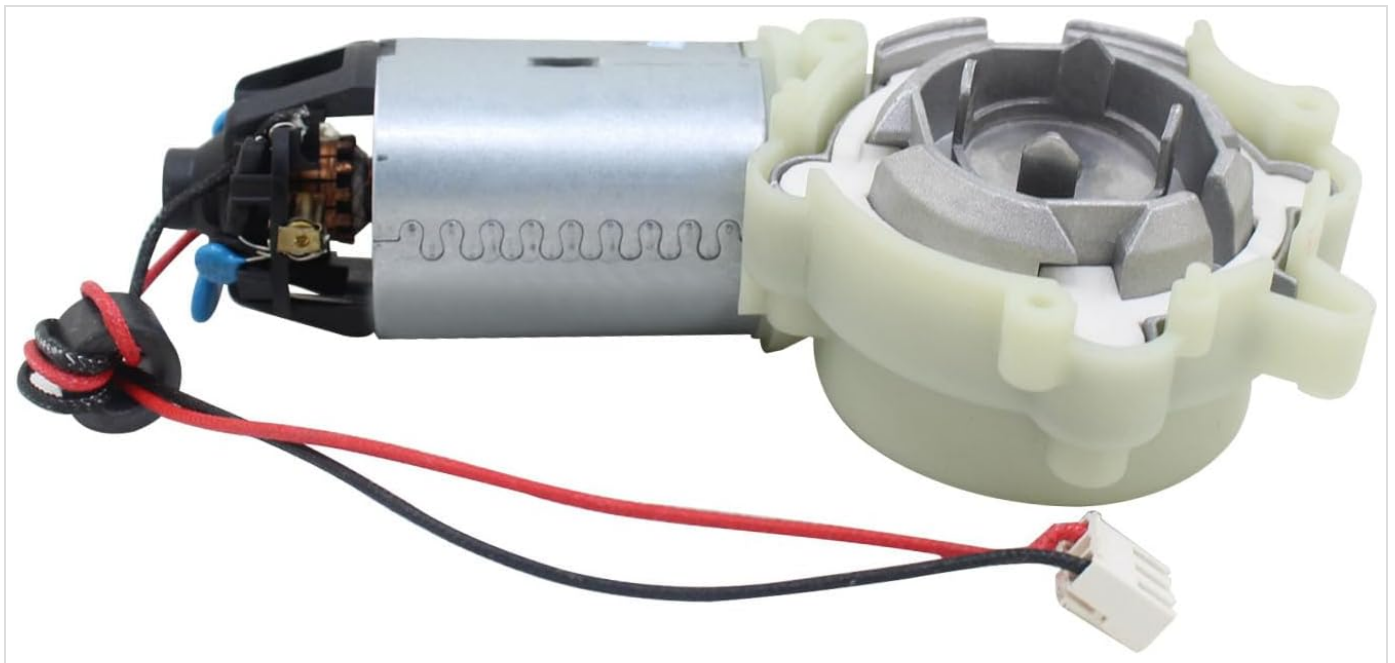


Figure 3.1: The replacement motor unit, showing the motor body, gear assembly, and electrical connectors.

4. INSTALLATION / REPLACEMENT INSTRUCTIONS

This section outlines the general steps for replacing the motor. Specific disassembly and reassembly procedures for your Donlim bread maker model may vary. Refer to your bread maker's original service manual for detailed instructions on accessing internal components.

1. Prepare the Bread Maker:

- Ensure the bread maker is completely unplugged from the power outlet.
- Allow the appliance to cool down if it has been recently used.
- Remove the bread pan and any other removable accessories.

2. Access the Motor:

- Carefully disassemble the outer casing of the bread maker to gain access to the internal motor assembly. This typically involves removing screws from the bottom or back panel. Keep track of all screws and components.
- Locate the existing motor. It will be connected to the drive shaft for the bread pan and have electrical wiring attached.



Figure 4.1: Top-down view of the motor, highlighting the gear assembly that connects to the bread pan's drive shaft.

3. Disconnect the Old Motor:

- Carefully disconnect the electrical wires from the old motor. Note their positions and connections, or take a photograph for reference.
- Unscrew or unclip the old motor from its mounting brackets within the bread maker chassis.



Figure 4.2: Side view of the motor, illustrating the electrical wiring and connector for power supply.

4. Install the New Motor:

- Position the new GTYGERIH replacement motor into the mounting brackets. Secure it with the original screws or clips.
- Connect the electrical wires to the new motor, ensuring they match the connections of the old motor. The connector is designed for a specific fit.



Figure 4.3: Angled view of the motor, showing the integration of the motor body, gear mechanism, and connected wires.

5. Reassemble and Test:

- Before fully reassembling the outer casing, perform a preliminary test. Plug in the bread maker and initiate a short cycle (e.g., kneading). Observe if the motor operates smoothly and the drive shaft rotates correctly.
- If the motor functions correctly, unplug the bread maker again and carefully reassemble the outer casing, ensuring all screws are tightened and panels are securely fitted.
- Perform a full functional test with the bread pan installed.

5. SPECIFICATIONS

Feature	Detail
Brand	GTYGERIH
Compatible Models	Donlim DL-T06A, DL-T06S-W, DL-TM018
Manufacturer Part Number	qibeitiancha65785
Item Weight	50 g
Item Package Quantity	1
Country of Origin	China
Approximate Dimensions (Motor Body)	Length: 164mm, Width: 47mm (refer to Figure 5.1)





Figure 5.1: Diagram showing the approximate dimensions of the motor unit, including overall length and motor body width.

6. TROUBLESHOOTING

If the bread maker does not function correctly after motor replacement, consider the following:

- **No Power:** Ensure the bread maker is securely plugged into a working electrical outlet. Check the circuit breaker.
- **Motor Not Turning:**
 - Verify all electrical connections to the new motor are secure and correctly oriented.
 - Check for any obstructions preventing the drive shaft or gear assembly from rotating.
 - Ensure the motor is properly seated in its mounting brackets and not binding.
- **Unusual Noises:** If the motor makes grinding or unusual noises, it may indicate improper installation or a foreign object interfering with the gears. Disassemble and re-inspect.
- **Still Not Working:** If troubleshooting steps do not resolve the issue, it is recommended to consult a qualified appliance repair technician.

7. CARE AND MAINTENANCE

The replacement motor is a sealed unit and requires no user-level maintenance such as lubrication. To ensure longevity:

- Keep the interior of the bread maker clean and free from dough residue or other debris that could interfere with moving parts.
- Avoid exposing the bread maker to excessive moisture or extreme temperatures.

8. WARRANTY AND SUPPORT

Information regarding specific warranty terms for this replacement motor is not provided in the product details. For warranty inquiries or technical support, please contact the seller or manufacturer directly. Ensure you retain your proof of purchase.

Manufacturer: qibeitiancha

Part Number: qibeitiancha65785

