

## OBEST 32023-1

# OBEST 2025 Motorcycle Tire Pressure Monitoring System (TPMS)

## MODEL 32023-1 USER MANUAL

For Model: 32023-1

### 1. Product Overview

The OBEST 2025 Motorcycle Tire Pressure Monitoring System (TPMS) provides real-time monitoring of your motorcycle's tire pressure and temperature. This wireless system includes a waterproof 1.5-inch monitor and two external rechargeable sensors. It is designed to enhance tire lifespan, prevent overinflation, and contribute to safer riding by providing immediate alerts for tire anomalies.



Figure 1: OBEST Motorcycle Tire Pressure Detector System Overview. This image illustrates the main components and primary functions of the TPMS, including tire pressure and temperature monitoring, and automatic start.

### 2. Package Contents

Verify that all items listed below are included in your package:

- M3ST Monitor
- 2 x Sensors
- Fixed bracket
- USB power cord
- Bracket buckle
- Spanner
- 2 x Theftproof nuts
- Stick bracket
- 3M adhesive
- Hexagon wrench



Figure 2: Included Components. This image displays all items typically found in the OBEST TPMS package, ensuring users can verify their contents.

### 3. Setup and Installation

Follow these steps to set up and install your OBEST TPMS:

1. **Charge the Monitor:** Before initial use, fully charge the monitor using the provided USB power cord.
2. **Mount the Monitor:**
  - Choose a suitable location on your motorcycle handlebars or dashboard.
  - Use either the fixed bracket or the stick bracket with 3M adhesive to secure the monitor. Ensure the monitor is positioned for clear visibility while riding.
3. **Install Sensors:**
  - Identify the front and rear sensors (if marked).
  - Remove the original valve caps from your tires.
  - Screw on the theftproof nuts onto the valve stems.
  - Screw the sensors onto the valve stems.
  - Tighten the theftproof nuts against the sensors using the provided spanner to prevent loosening and theft.
4. **Power On:** The display automatically turns on and off based on vehicle conditions.

# Wireless Transmission Design, Convenient and Convenient



Figure 3: Monitor Mounting Options. This image demonstrates various ways to mount the wireless monitor on a motorcycle, ensuring convenient placement and visibility.

# Easy to Operate and Install

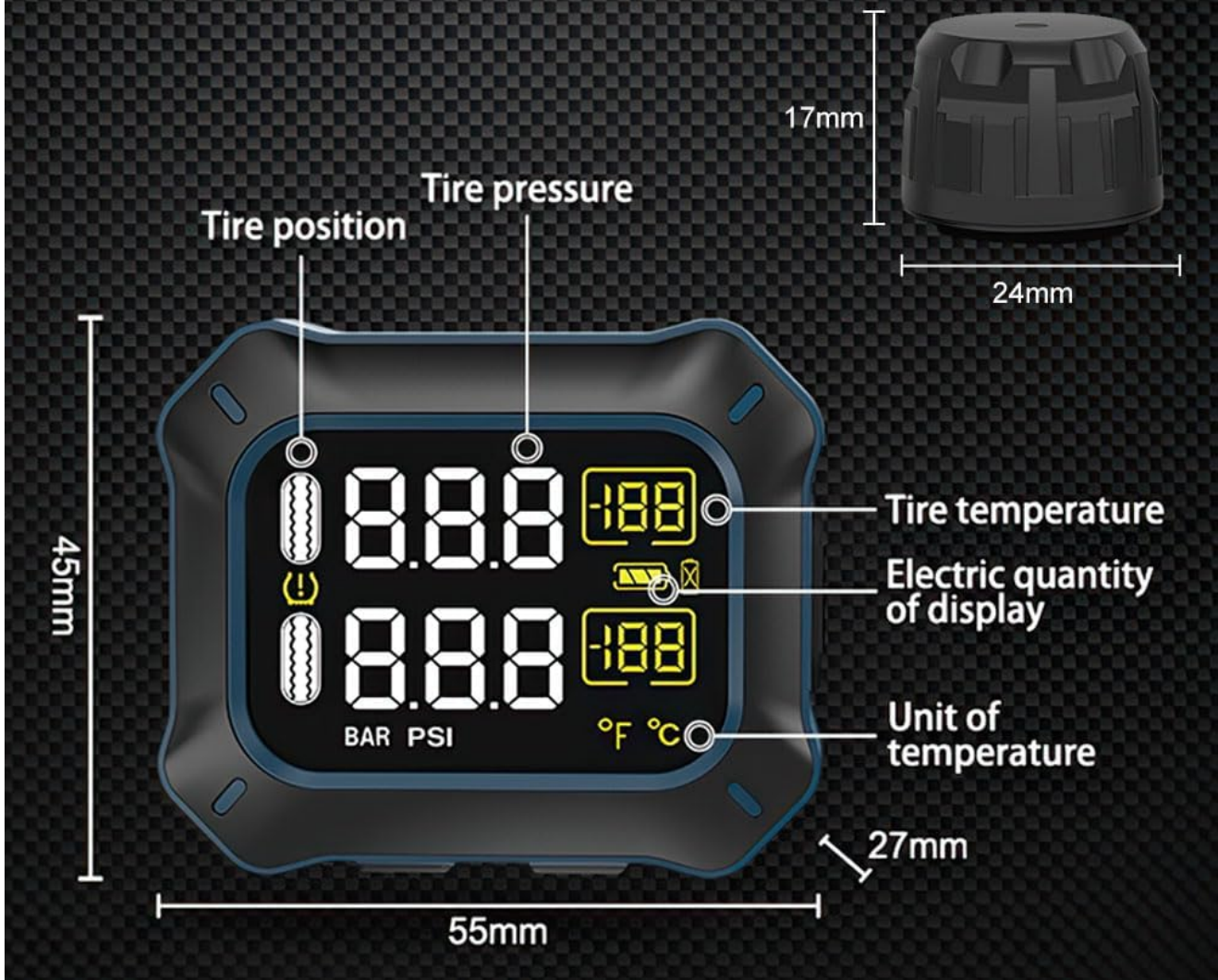


Figure 4: Monitor and Sensor Dimensions. This diagram provides a visual guide to the physical dimensions of the monitor and sensors, along with labels for display elements.

## 4. Operating Instructions

The OBEST TPMS provides real-time data on a clear LCD display. The system updates data every 3 seconds.

### 4.1 Display Information

The monitor displays the following information for each tire:

- **Tire Pressure:** Shown in BAR or PSI.
- **Tire Temperature:** Shown in Celsius (°C) or Fahrenheit (°F).
- **Sensor Battery Level:** Indicates the remaining battery life of each sensor.
- **Monitor Battery Level:** Indicates the remaining battery life of the main display unit.

### 4.2 Unit Settings

You can switch between pressure units (PSI/BAR) and temperature units (°C/°F) through the monitor's settings. Refer to the detailed instructions in the included paper manual for specific button operations to change these

settings.

## High Definition Display Screen, Refresh Data Every 3s

3s  
Update data  
warning exception

0.1BAR  
Tire pressure  
detection accuracy

$\pm 2^{\circ}\text{C}$   
Tire temperature  
detection accuracy



Figure 5: Real-time Display. This image highlights the high-definition display, showing real-time tire pressure and temperature readings, along with data refresh rate and accuracy.



Figure 6: TPMS in Use. This image shows the TPMS monitor actively displaying tire data on a motorcycle during operation, illustrating its real-time monitoring capability.

## 5. Smart Alert Functions

The system is equipped with smart alert functions to notify you of potential tire issues. Customizable parameters can be set for monitoring. If any data anomalies are detected, the system immediately triggers an alarm (audible and visual) to reduce risks. Press any button to turn off the audible alarm; the icon will continue flashing until the problem is resolved.

### Alert Types:

- **High Pressure Alert:** Triggered when tire pressure exceeds the preset high-pressure value (e.g., 3.0 BAR).
- **Low Pressure Alert:** Triggered when tire pressure falls below the preset low-pressure value (e.g., 2.0 BAR).
- **High Temperature Alert:** Triggered when tire temperature exceeds the preset high-temperature value (e.g., 65°C).
- **Quick Air Leakage Alert:** Activated when a rapid air leak is detected.
- **Sensor Low Battery Alert:** Indicates that a sensor's battery is low and requires replacement.

## Alarming State

The User Preset Values:

High pressure alarming preset values: **3.0 BAR**

Low pressure alarming preset values: **2.0 BAR**

High temperature alarming preset values: **65 °C**



High Tire Pressure Alert

When the pressure of the front left tire reach 3.1 BAR which is higher than the preset value, the high pressure icon and the value is flashing with the audible alarm together. Press any button to turn off the alarm, but the icon is still flashing until the problem is resolved



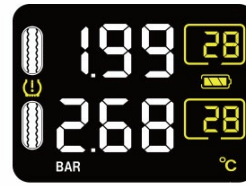
Low Tire Pressure Alert

When the pressure of the front left tire is below 1.9BAR which is lower than the preset value, the low pressure icon and the value is flashing with the audible alarm together. Press any button to turn off the alarm, but the icon is still flashing until the problem is resolved.



High Tire Temperature Alert

When the temperature of the front right tire reach 66°C which is higher than the preset value, the high temperature icon and the value is flashing with the audible alarm together. Press any button to turn off the alarm, but the icon is still flashing until the problem is resolved.



Quick Air Leakage Alert

When the sensor detects air leakage of the front left outside tire, the quick air leakage icon and the value is flashing with the audible alarm together. Press any button to turn off the alarm, but the icon is still flashing until the problem is resolved.



Sensor Low Battery Alert

When the sensor detects itself low battery level, it will send an alert to the monitor immediately. The sensor low battery icon will show on the LCD and the corresponding tire icon will flash with audible alarm together. Press any button to turn off the alarm, but the icon is still flashing until the problem is resolved.

Figure 7: Alarm Conditions. This diagram visually explains different alert scenarios, showing how the monitor indicates high/low pressure, high temperature, air leakage, and low sensor battery.

## 6. Maintenance

### 6.1 Sensor Battery Replacement

The external sensors are designed for easy battery replacement. When a low battery alert is displayed for a sensor, replace its battery promptly to ensure continuous monitoring. Refer to the detailed instructions in the included paper manual for specific steps on how to open the sensor and replace the battery.

### 6.2 Cleaning

Wipe the monitor and sensors with a soft, damp cloth. Do not use abrasive cleaners or solvents. The device has an IP67 waterproof rating, but avoid submerging it in water.

## TPMS SENSOR

After the sensor has been tested on "sunshine, rain, snow, rain, haze and other harsh climate simulation tests", it ensures that each sensor in the factory can fully satisfy customers in different regions.

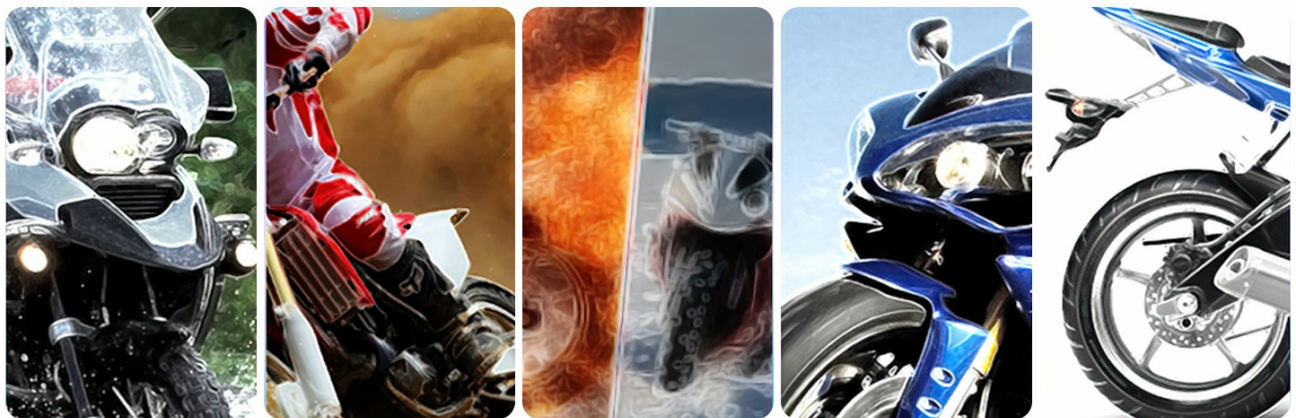


Figure 8: Sensor Durability Testing. This image highlights the rigorous testing undergone by the TPMS sensors to ensure reliability in diverse weather conditions.

## 7. Troubleshooting

If you encounter issues with your OBEST TPMS, refer to the following common problems and solutions:

- **Monitor Does Not Turn On:**

- Ensure the monitor is fully charged. Connect it to a USB power source and allow sufficient charging time.

- Verify the power button (if applicable) is pressed correctly. The monitor is designed to turn on automatically with vehicle motion.

- **Inaccurate Pressure Readout:**

- Ensure sensors are securely installed and tightened.
- Check tire pressure with a reliable manual gauge to compare readings.
- Allow a few minutes for the system to synchronize after installation or pressure adjustments.
- If the issue persists, re-pair the sensors with the monitor (refer to the paper manual for pairing instructions).

- **No Signal from Sensors / Display Shows No Reading:**

- Confirm sensors are installed on the correct tires and are within range.
- Check sensor batteries and replace if necessary.
- Ensure the monitor is powered on and functioning.
- Re-pair sensors with the monitor.

- **Buttons Not Responding / Display Malfunction:**

- Try resetting the device by holding the power button (if available) or allowing the battery to fully discharge and then recharging.
- If the display remains unresponsive or faulty, contact customer support.

## 8. Product Specifications

---

<b>Brand</b>	OBEST
<b>Model</b>	32023-1
<b>Item Dimensions (L x W x H)</b>	4.65 x 4.72 x 2.36 inches
<b>Material</b>	Acrylonitrile Butadiene Styrene
<b>Item Weight</b>	280 Grams
<b>Measurement Accuracy</b>	±2.5% (Pressure accurate to 0.1 BAR, Temperature accurate to ±2°C)
<b>Mounting Type</b>	Tire Mount
<b>Output Type</b>	Digital
<b>Upper Temperature Rating</b>	365 Degrees Fahrenheit
<b>Waterproof Rating</b>	IP67
<b>Power Source</b>	Lithium Battery (Rechargeable via USB)

## 9. Warranty and Customer Support

---

This OBEST TPMS product is backed by a **2-year warranty** from the date of purchase. This warranty covers manufacturing defects and malfunctions under normal use.

For warranty claims, technical assistance, or any questions regarding your product, please contact OBEST customer support. Our dedicated support team is based in the United States and is ready to provide responsive assistance.

Please refer to your purchase documentation or the official OBEST website for the most current contact information.

© 2025 OBEST. All rights reserved. Specifications are subject to change without notice.