

Aoeekei JBC-AM05601

Aoeekei EAS AM 58 KHz Retail Anti-Theft System

Model: JBC-AM05601

Brand: Aoeekei

1. INTRODUCTION

This manual provides detailed instructions for the installation, operation, and maintenance of your Aoeekei EAS AM 58 KHz Retail Anti-Theft System. This system is designed to enhance security and prevent merchandise loss in various retail environments by detecting unremoved security tags.



Image 1.1: The Aoeekei EAS AM 58 KHz Anti-Theft Gate System installed at a store entrance.

2. PRODUCT OVERVIEW

2.1 Key Features

- **Effective AM 58KHz Technology:** Provides reliable detection performance at security gates, triggering alarms for unremoved anti-theft tags.
- **Adjustable Detection Range:** Flexible tuning to cover various entry points and installation positions, suitable for supermarkets, clothing stores, and other retail venues.

- **Dual Audible & Visual Alarm:** Equipped with a high-decibel sound and blinking lights for immediate alerts upon security breaches.
- **Strong Interference Resistance:** Advanced anti-interference technology minimizes disruptions, ensuring stable and accurate detection in busy environments.

Protect your inventory from shrinkage, theft, and shrinkage with industry-leading AM EAS technology



Three Core Advantages



58kHz High Frequency Technology
Advanced detection system for maximum accuracy



95% Detection Accuracy
Industry-leading precision, minimal false alarms



Low False Alarm Rate
Smart recognition, professional performance

Real-World Applications

Image 2.1: Illustration of the system's core advantages: high frequency technology, high detection accuracy, and low false alarm rate.

2.2 Applicable Scenarios

The Aoeekei EAS AM 58 KHz system is versatile and can be deployed in various retail settings to prevent shoplifting and secure merchandise.



Supermarkets



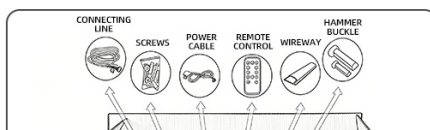
Apparel Stores



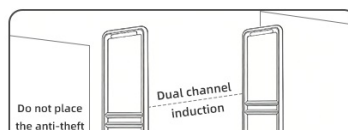
Retail Outlets

Professional Grade Security

Packing List



Installation Precautions



EAS Usage Process



Image 2.2: The system is suitable for supermarkets, apparel stores, and other retail outlets.

2.3 Compatible Tags

The system is compatible with AM 58KHz tags. It is **not compatible** with 8.2MHz tags.

EAS Anti-theft System Tag Guide

Compatible With 58kHz Tags

⚠ ATTENTION: Not compatible with 8.2MHz Tags



Small Hard Tag



AM Lanyard Tag



AM Soft Label



Wine Bottle Tag



Milk Powder Tag



AM Jewelry Label

Image 2.3: Examples of compatible AM 58kHz security tags.

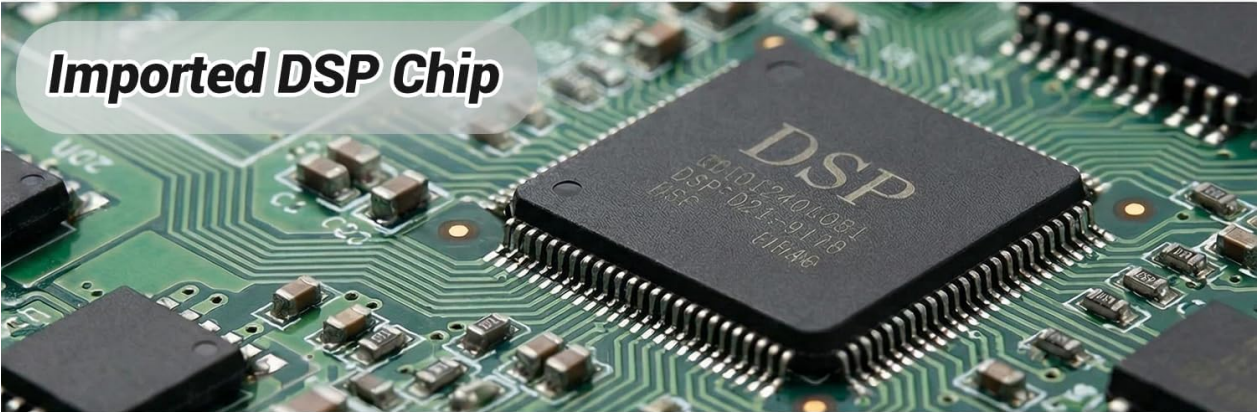
2.4 Internal Components

The system features a visible warning light, an imported DSP chip for reliable performance, and durable ABS material construction.

Visible Warning Light



Imported DSP Chip



Durable ABS Material



Image 2.4: Details of the system's internal components and construction materials.

3. SETUP & INSTALLATION

3.1 Package Contents

Before installation, ensure all components are present in the package:



Complete Package Contents

Everything You Need to Get Started

EAS 58kHz Retail Anti-Theft Equipment

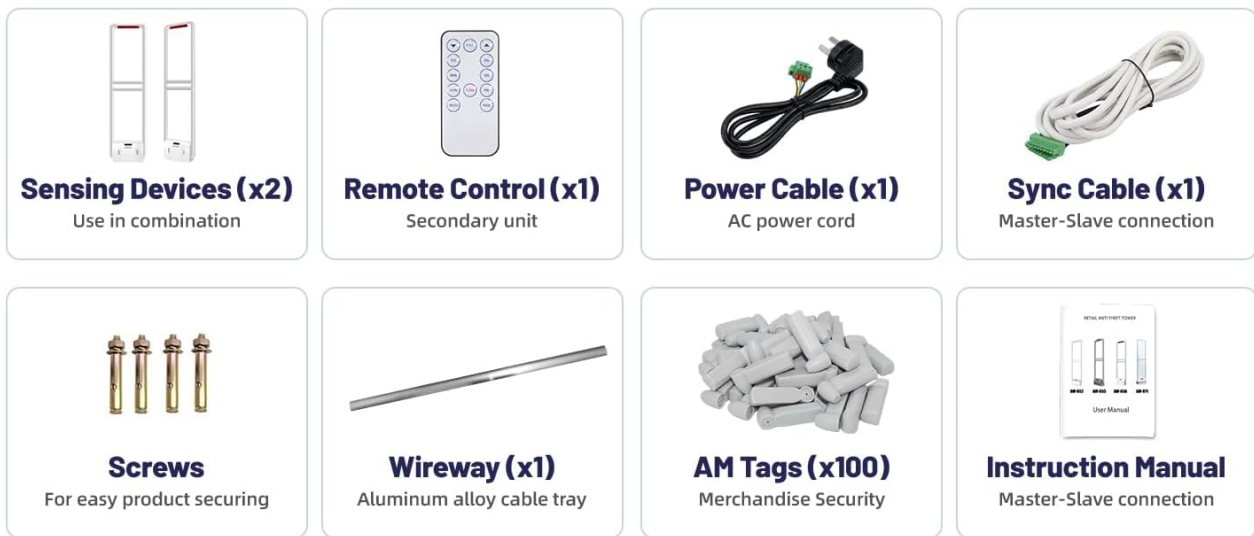


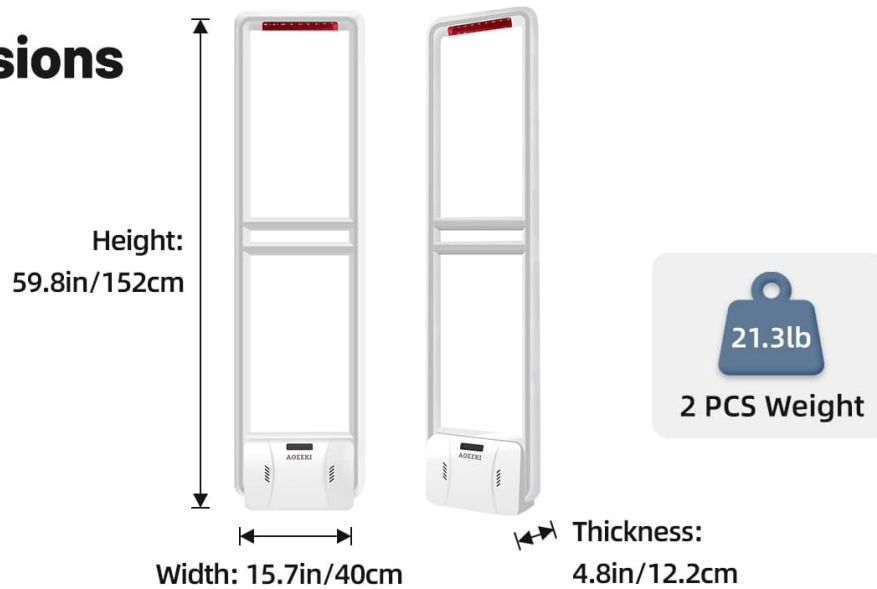
Image 3.1: Complete package contents for the EAS 58kHz Retail Anti-Theft Equipment.

- Sensing Devices (x2)
- Remote Control (x1)
- Power Cable (x1)
- Sync Cable (x1)
- Screws (for product securing)
- Wireway (x1) (Aluminum alloy cable tray)
- AM Tags (x100) (Merchandise Security)
- Instruction Manual (this document)

3.2 Dimensions and Installation Precautions

Refer to the diagram below for product dimensions and critical installation guidelines.

Dimensions



Transmit + Receive

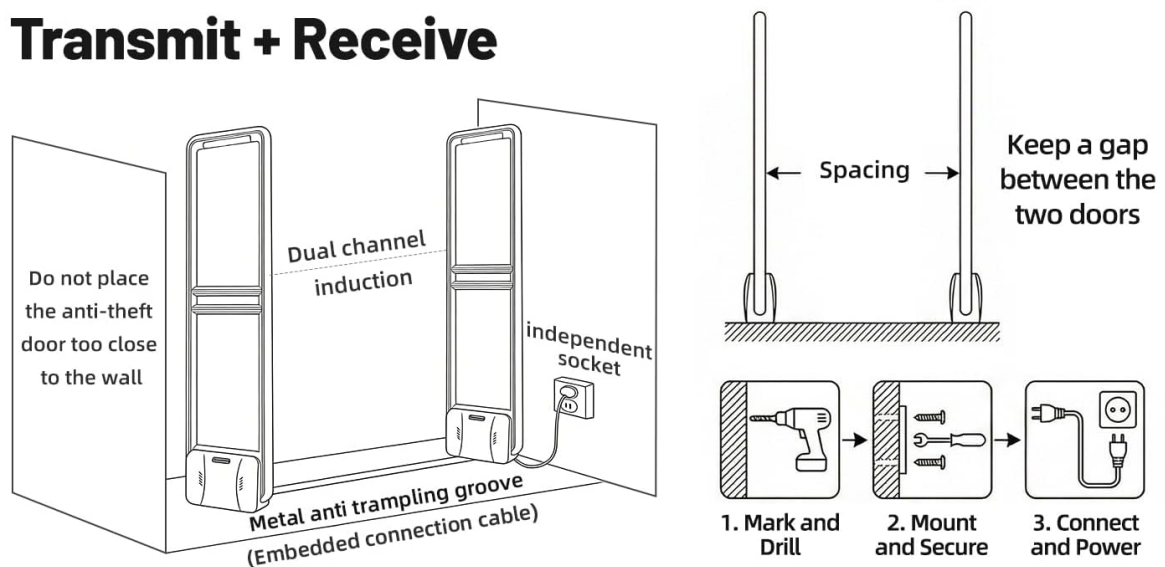


Image 3.2: Product dimensions and installation diagram.

- **Height:** 59.8 inches (152 cm)
- **Width:** 15.7 inches (40 cm)
- **Thickness:** 4.8 inches (12.2 cm)
- **Weight:** 21.3 lbs (for 2 units)
- **Spacing:** Maintain an appropriate gap between the two sensing devices for optimal detection.
- **Wall Proximity:** Do not place the anti-theft door too close to the wall to avoid interference.

3.3 Installation Steps

1. **Site Preparation & Wiring:** Plan the placement of the sensing devices, considering power access and cable routing.
2. **Pedestal Mounting & Alignment:** Securely mount the sensing devices to the floor using the provided screws. Ensure they are properly aligned and spaced.
3. **Power Connection & Testing:** Connect the power cable and sync cable as per the diagram. Power on the system and perform initial tests.

4. OPERATION

4.1 EAS Usage Process

The system operates by detecting active AM 58KHz security tags. The typical process is as follows:

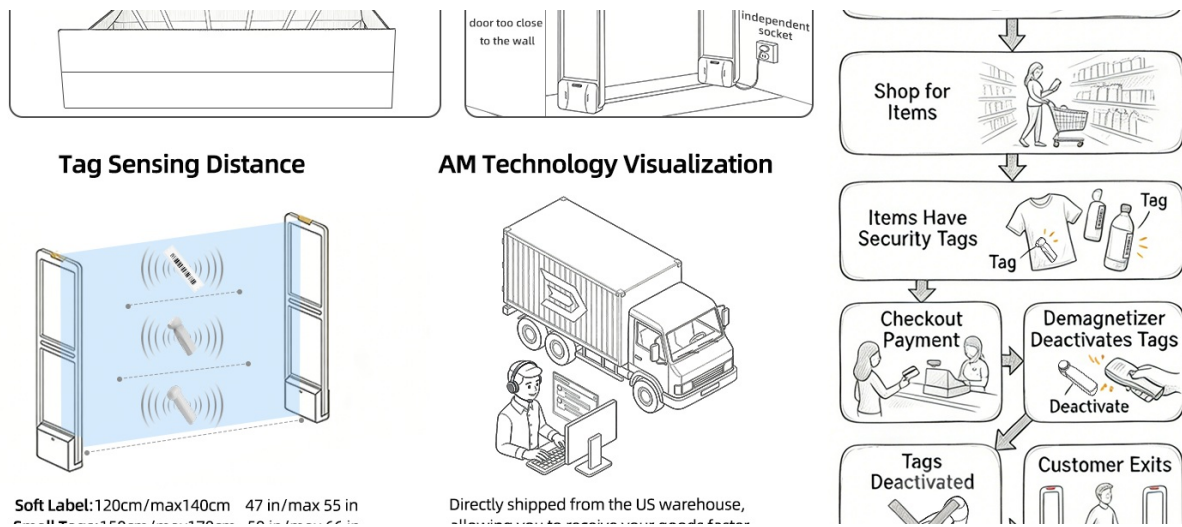


Image 4.1: Flowchart of the EAS system in operation.

- 1. Customer Enters Store:** Customers enter the retail space.
- 2. Shop for Items:** Items are selected, each equipped with a security tag.
- 3. Checkout Payment:** At the point of sale, items are purchased, and security tags are deactivated using a demagnetizer.
- 4. Customer Exits:** If a tag is not deactivated and passes through the sensing devices, an alarm will trigger.

4.2 Tag Sensing Distance

The detection range varies based on the type of tag used:

Small Tags: 150cm/max170cm 59 in/max 66 in
Big Tags: 190cm/max210cm 74 in/max 82 in
(Different tags have different sensing distances)

allowing you to receive your goods faster
 One on one professional installation guidance,
 easy to complete installation



Technical Specifications

Parameter	Specification
Frequency	58kHz
Detection Width	Up to 2.0m (per aisle)
packaging	2 pieces/box
Material	Premium Aluminum Alloy & Acrylic
Power Supply	110V
Dimensions	1550x420x140 mm
Weight	13.5/1 unit

Installation & Tag Compatibility

- 1. Site Preparat & Wiringe**
- 2. Pedestal Mounting & Alignment**
- 3. Power Connection & Testing**

AM Hard Tags

AM Soft Labels

Reduce Loss · Increase Profit

- Reduce merchandise loss by 95%
- Improve customer shopping experience
- Enhance store security management

Image 4.2: Illustration of tag sensing distances.

- **Soft Label:** 120cm / max 140cm (47 in / max 55 in)
- **Small Tag:** 150cm / max 170cm (59 in / max 66 in)
- **Big Tags:** 190cm / max 210cm (74 in / max 82 in)

Note: Different tags have different sensing distances.

4.3 Remote Control Adjustment

The system's sensitivity and other parameters can be adjusted using the provided remote control for optimal

performance in your specific environment.

4.4 How Retail Anti-Theft Sensors Work (Video)

For a visual explanation of how retail anti-theft sensors function, please watch the video below.

Your browser does not support the video tag.

Video 4.1: An official video from Aoeeeki demonstrating how retail anti-theft sensors work.

5. MAINTENANCE

To ensure the longevity and optimal performance of your anti-theft system, follow these maintenance guidelines:

- **Cleaning:** Regularly wipe down the exterior of the sensing devices with a soft, dry cloth. Avoid using abrasive cleaners or solvents.
- **Inspection:** Periodically check all cables and connections for any signs of wear or damage. Ensure the devices are securely mounted.
- **Environmental Conditions:** Keep the system in a dry environment and avoid exposure to extreme temperatures or direct sunlight.

6. TROUBLESHOOTING

If you encounter issues with your Aoeeeki EAS AM 58 KHz system, refer to the following common problems and solutions:

Problem	Possible Cause	Solution
False Alarms	Interference from nearby electronics or metal objects; overly sensitive settings.	Adjust sensitivity using the remote control. Ensure proper spacing from walls and other equipment.
No Detection	System not powered on; loose connections; tags not 58KHz compatible; tags too far from sensors.	Check power supply and cable connections. Verify tags are 58KHz. Ensure items pass within the optimal sensing distance.
Alarm Too Quiet/Loud	Volume settings.	Adjust alarm volume using the remote control.
System Not Powering On	Power cable disconnected; power outlet issue.	Check power cable connection to the device and the outlet. Test the outlet with another device.

If the problem persists after attempting these solutions, please contact Aoeeeki customer support.

7. SPECIFICATIONS

Detailed technical specifications for the Aoeeeki EAS AM 58 KHz Retail Anti-Theft System:

Parameter	Specification
Brand	Aoeeeki

Parameter	Specification
Model Number	JBC-AM05601
Mfr Part Number	SC-056
Frequency	58KHz
Detection Width	Up to 2.0m (per aisle)
Packaging	2 pieces/box
Material	Premium Aluminum Alloy & Acrylic
Power Supply	110V
Dimensions (each unit)	1550 x 420 x 140 mm (approx. 61 x 16.5 x 5.5 inches)
Weight (each unit)	13.5 kg (approx. 29.7 lbs)
Connectivity Technology	Wired
Installation Type	Self-Adhesive (for certain components)
Alert Type	Motion Only (detection of tags in motion)
Control Method	Touch (via remote control)
Built-In Media	2pcs alarm sensor, 100pcs security tag, 1pcs tag tool

8. SAFETY INFORMATION

Please read and adhere to the following safety precautions to prevent injury or damage to the product:

- Ensure the power supply matches the system's requirements (110V).
- Do not attempt to open or repair the device yourself. Refer all servicing to qualified personnel.
- Keep the system away from water or other liquids to prevent electric shock or damage.
- Install the system in a stable location to prevent it from falling.
- Keep children away from the system during operation and installation.

9. WARRANTY & SUPPORT

For warranty information, technical support, or service inquiries, please contact Aoeeki customer service through the retailer where the product was purchased or visit the official Aoeeki website. Please have your model number (JBC-AM05601) and purchase details ready when contacting support.