

hygger HG-957-Clip

hygger Aquarium Light Clip Holder (for HG-957) Instruction Manual

Model: HG-957-Clip

		Package		
Introduction	Safety Information	Contents	Installation	Operation
Maintenance	Troubleshooting	Specifications		

1. INTRODUCTION

Thank you for choosing the hygger Aquarium Light Clip Holder (Model HG-957-Clip). This holder is designed to securely mount your hygger HG-957 series aquarium light above your fish tank, providing adjustable height and positioning. Constructed from durable plastic and aluminum, it ensures stability and longevity. Please read this manual thoroughly before installation and use to ensure proper setup and operation.

2. SAFETY INFORMATION

- Ensure the aquarium light is unplugged from the power source before installation or adjustment.
- Verify that the fish tank wall thickness is suitable for the clip holder (up to 1 inch / 2.5 cm).
- Do not overtighten screws, as this may damage the aquarium glass or the holder components.
- Keep all components away from children and pets.
- This product is designed for indoor use with aquariums only.
- Regularly check the holder for any signs of wear or damage. Replace if necessary.

3. PACKAGE CONTENTS

The hygger Aquarium Light Clip Holder package includes the following components:

- Extendable Arm
- Metal Pole
- Tank Clamp
- Short Screws (for attaching extendable arm and tank clamp)

- Long Screws (for securing the tank clamp)



Figure 3.1: Exploded view of the hygger Aquarium Light Clip Holder components, showing the extendable arm, metal pole, tank clamp, and various screws.

4. INSTALLATION GUIDE

Follow these steps to properly install your hygger Aquarium Light Clip Holder:

4.1. Assemble the Holder

1. Attach the extendable arm to the top of the metal pole using one short screw. Ensure it is securely fastened but do not overtighten.
2. Attach the tank clamp to the bottom of the metal pole using another short screw.



Figure 4.1: Assembly of the extendable arm to the metal pole using a short screw.



Figure 4.2: Assembly of the tank clamp to the metal pole using a short screw.

4.2. Mount to Aquarium

3. Position the assembled holder onto the edge of your aquarium. Ensure the tank clamp securely grips the aquarium wall. This holder is suitable for fish tank wall thickness up to 1 inch (2.5 cm).
4. Insert the two long screws into the tank clamp and tighten them to secure the holder firmly to the aquarium. Do not overtighten.



Figure 4.3: The hygger Aquarium Light Clip Holder securely mounted on an aquarium.

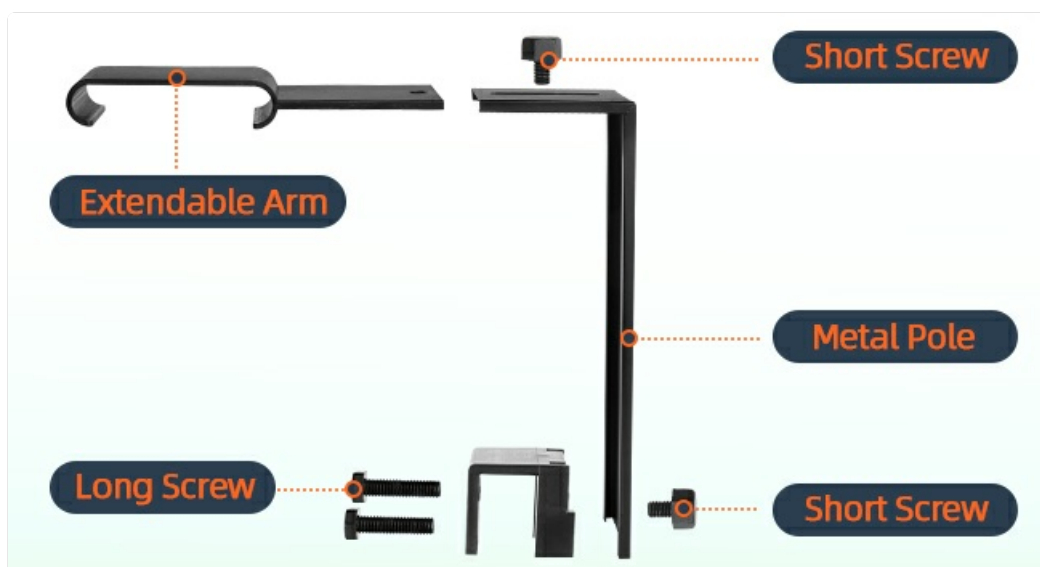


Figure 4.4: Detail of the tank clamp attachment to the aquarium glass.

4.3. Attach the Aquarium Light

5. Slide your hygger HG-957 series aquarium light onto the extendable arm. The arm is designed to

hold the light securely.

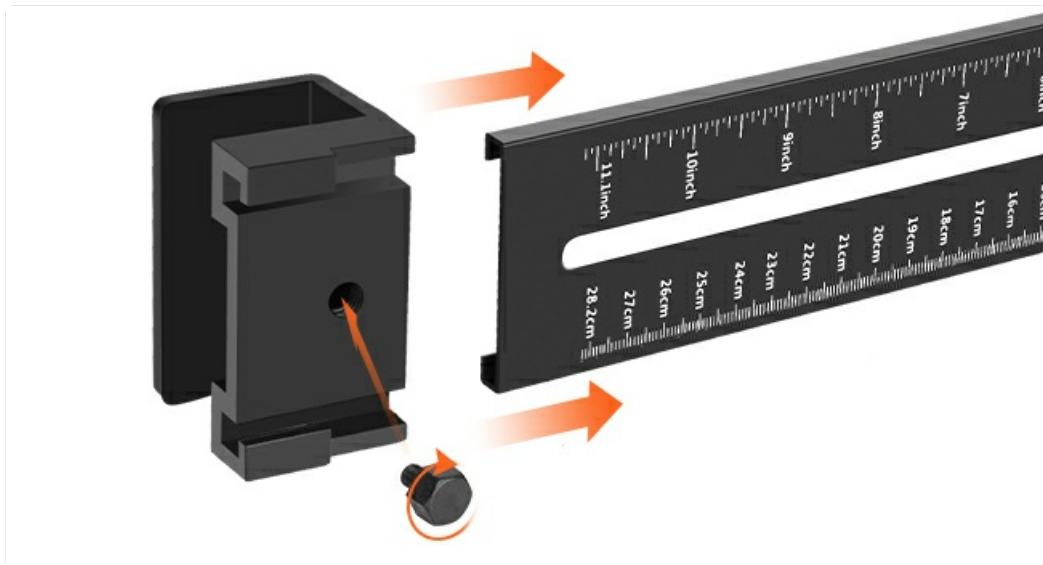


Figure 4.5: Attaching the aquarium light to the extendable arm. Note: Light not included.

Suitable for HG957 series aquarium lights



Figure 4.6: The hygger Aquarium Light Clip Holder with a compatible light installed.

Your browser does not support the video tag.

Video 4.1: This video demonstrates the installation process of the hygger Aquarium Light Clip Holder, including assembly and mounting to the aquarium. It also shows the light attached and adjusted.

5. OPERATION AND ADJUSTMENTS

The hygger Aquarium Light Clip Holder offers flexibility in positioning your aquarium light.

5.1. Adjusting Height

To adjust the height of the light above the water surface:

1. Loosen the plastic screw on the metal pole that secures the tank clamp.
2. Slide the metal pole up or down to achieve the desired height. The pole features a size scale (inches and centimeters) for precise adjustment, up to 10.5 inches (26.5 cm).
3. Once the desired height is reached, tighten the plastic screw to secure the position.

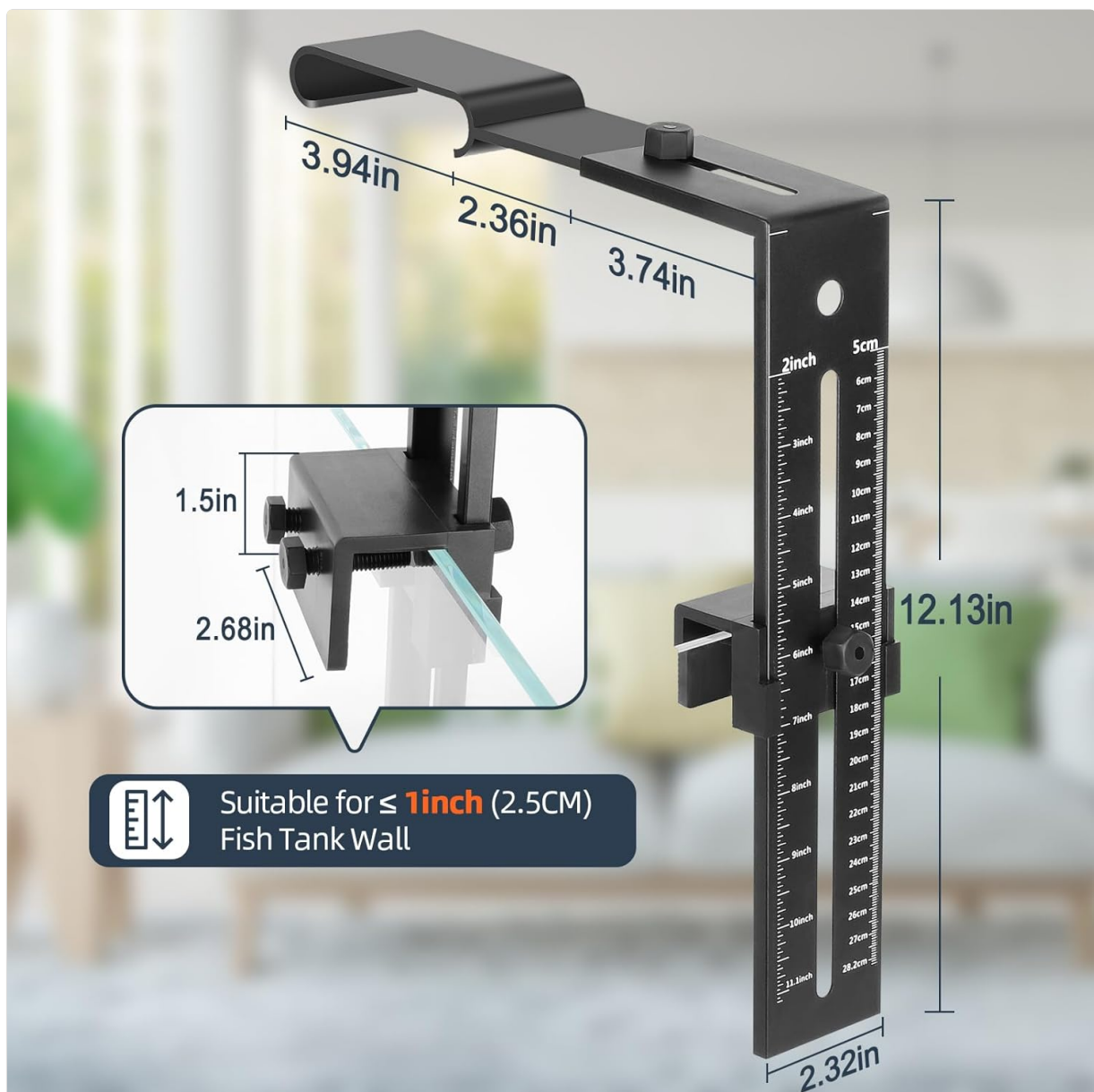


Figure 5.1: The holder's metal pole with a ruler scale for precise height adjustment, up to 10.5 inches (26.5 cm).

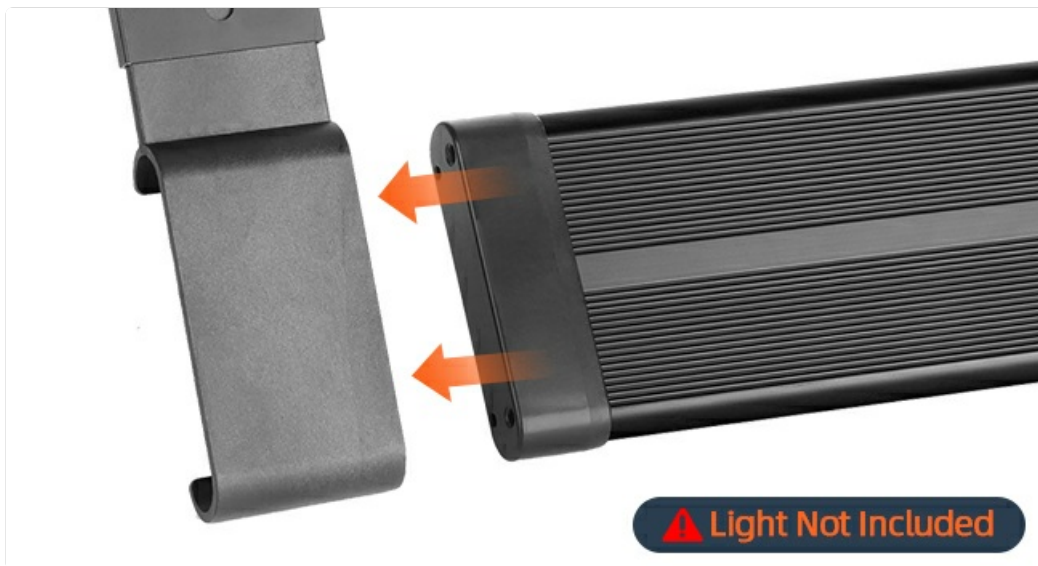


Figure 5.2: Detail of the height adjustment mechanism, showing the plastic screw and scale.

5.2. Adjusting Extension (Forward/Backward)

To adjust the horizontal position of the light (closer or further from the tank edge):

1. Loosen the plastic screw on the extendable arm.
2. Slide the arm forward or backward to position the light as desired.
3. Tighten the plastic screw to secure the arm in place.

Adjustable Extension Plate



Figure 5.3: The adjustable extension plate allows for forward and backward positioning of the light.



Figure 5.4: Detail of the extension adjustment, showing the screw for securing the arm's position.

6. MAINTENANCE

To ensure the longevity and proper function of your hygger Aquarium Light Clip Holder, follow these simple maintenance guidelines:

- **Cleaning:** Wipe the holder periodically with a soft, damp cloth to remove dust or water spots. Avoid using abrasive cleaners or solvents, as these can damage the finish.
- **Inspection:** Regularly check all screws and connections to ensure they remain tight. If any component appears loose, gently tighten it.
- **Corrosion Check:** Although made of durable materials, inspect for any signs of corrosion, especially in humid environments.

7. TROUBLESHOOTING

If you encounter any issues with your hygger Aquarium Light Clip Holder, refer to the following common problems and solutions:

Problem	Possible Cause	Solution
Holder is not stable on the tank.	Screws are not tightened sufficiently. Tank wall thickness exceeds 1 inch (2.5 cm).	Ensure all long screws on the tank clamp are securely tightened. Verify your tank wall thickness is within the specified limit.
Light slides off the extendable arm.	Light is not a hygger HG-957 series model. Extendable arm screw is loose.	Confirm your aquarium light is a compatible hygger HG-957 series model. Tighten the short screw securing the extendable arm.
Difficulty adjusting height or extension.	Adjustment screws are too tight.	Loosen the relevant plastic screw slightly before attempting to adjust. Do not force adjustments.

8. SPECIFICATIONS

Feature	Detail
Model	HG-957-Clip
Compatible Light Series	hygger HG-957 series aquarium lights
Max. Tank Wall Thickness	1 inch (2.5 cm)
Adjustable Height	Up to 10.5 inches (26.5 cm)
Material	Aluminum and Plastic (ABS/PC)
Product Dimensions	Approximately 4"L x 2"W x 8"H (when assembled and not extended)
Item Weight	Approximately 8 ounces

9. WARRANTY AND SUPPORT

For warranty information or technical support, please refer to the official hygger website or contact hygger customer service directly. Keep your purchase receipt for warranty claims.

Contact Information:

- Official hygger Website: [Visit the hygger Store on Amazon](#)
- Customer Service: Refer to product packaging or the official website for the most current contact details.