

## Manuals+

[Q & A](#) | [Deep Search](#) | [Upload](#)

[manuals.plus](#) /

> [Acoath](#) /

> [Endoscope Camera with Light, Dual-Lens 1920P HD Borescope with 8 Adjustable LED Lights, IP67 Waterproof Boroscope Inspection Tools, 9.8ft Semi-Rigid Snake Camera for iOS & Android 9.8FT Snake Camera](#)

## Acoath 3M

# Endoscope Camera with Light User Manual

Brand: Acoath | Model: 3M

## INTRODUCTION

---

This Acoath Dual-Lens 1920P HD Endoscope Camera is designed for detailed inspection in hard-to-reach areas. Featuring a 7.9mm probe with dual lenses and 8 adjustable LED lights, it captures sharp images and videos at 1920x1440 resolution. Its IP67 waterproof semi-rigid cable allows for versatile use in various environments, from automotive and pipeline inspections to home repairs.

## SETUP

---

### Package Contents

- Endoscope Camera x1
- Android connector x1
- Lightning Port x1
- Type-C connector x1
- 9.8ft Semi-rigid Cable x1
- Accessories: Magnet x1, Hook x1, Mirror x1, Protective Cap x1
- Manual x1

# 9.8FT Endoscope Camera with Light



Image: The complete package contents, neatly arranged, showing the endoscope camera, various connectors, and accessory attachments.

## App Installation

To use the endoscope camera, you must first download the 'SUP-ANESOK' app. For iOS users, search 'UseePlus' in the App Store. For Android users, search 'UseePlus' in the Google Play Store. Ensure your device supports iOS 9.0+ or Android 7+.

# Plug and Play

**EASY TO USE**

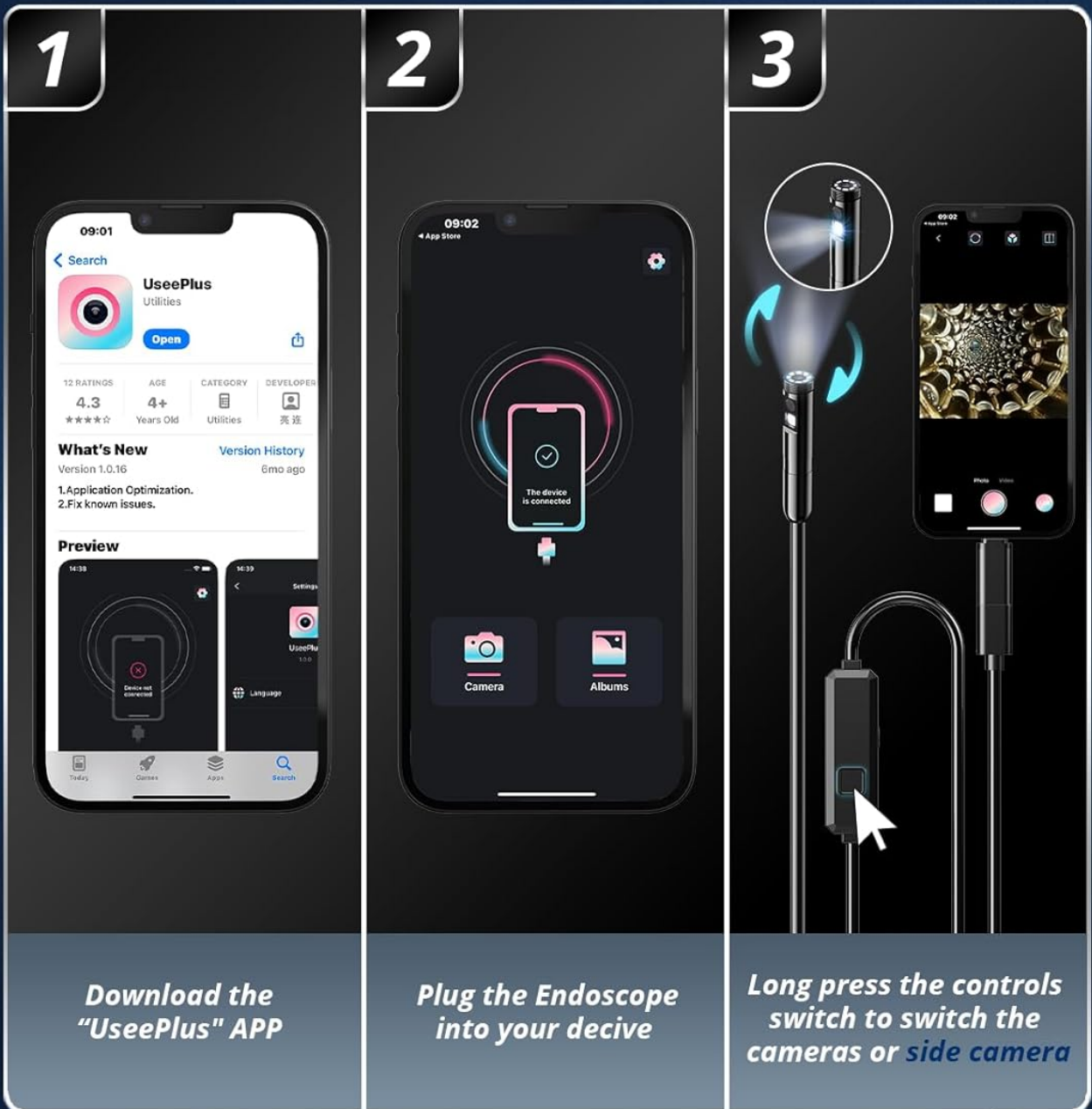


Image: Step-by-step guide for downloading the required app and connecting the endoscope to a mobile device.

## Connecting the Device

After installing the app, connect the endoscope camera to your smartphone or tablet using the appropriate connector (Lightning, Type-C, or Android connector). The device is designed for seamless plug-and-play operation. Once connected, open the 'SUP-ANESOK' app to begin your inspection.



Image: The endoscope camera with its main cable, control unit, and interchangeable connectors for different mobile devices.

## OPERATING INSTRUCTIONS

---

### Dual Lens Functionality

The endoscope features a dual-lens system, allowing for both a direct front view and a side view. This enables comprehensive inspection without needing to maneuver the camera head excessively. The 2.0MP HD endoscope captures sharp, close-up images and videos at 1920x1440 resolution.

# 1920P HD Resolution

*Endoscope with Dual Camera  
Provides sharper Lossless images*

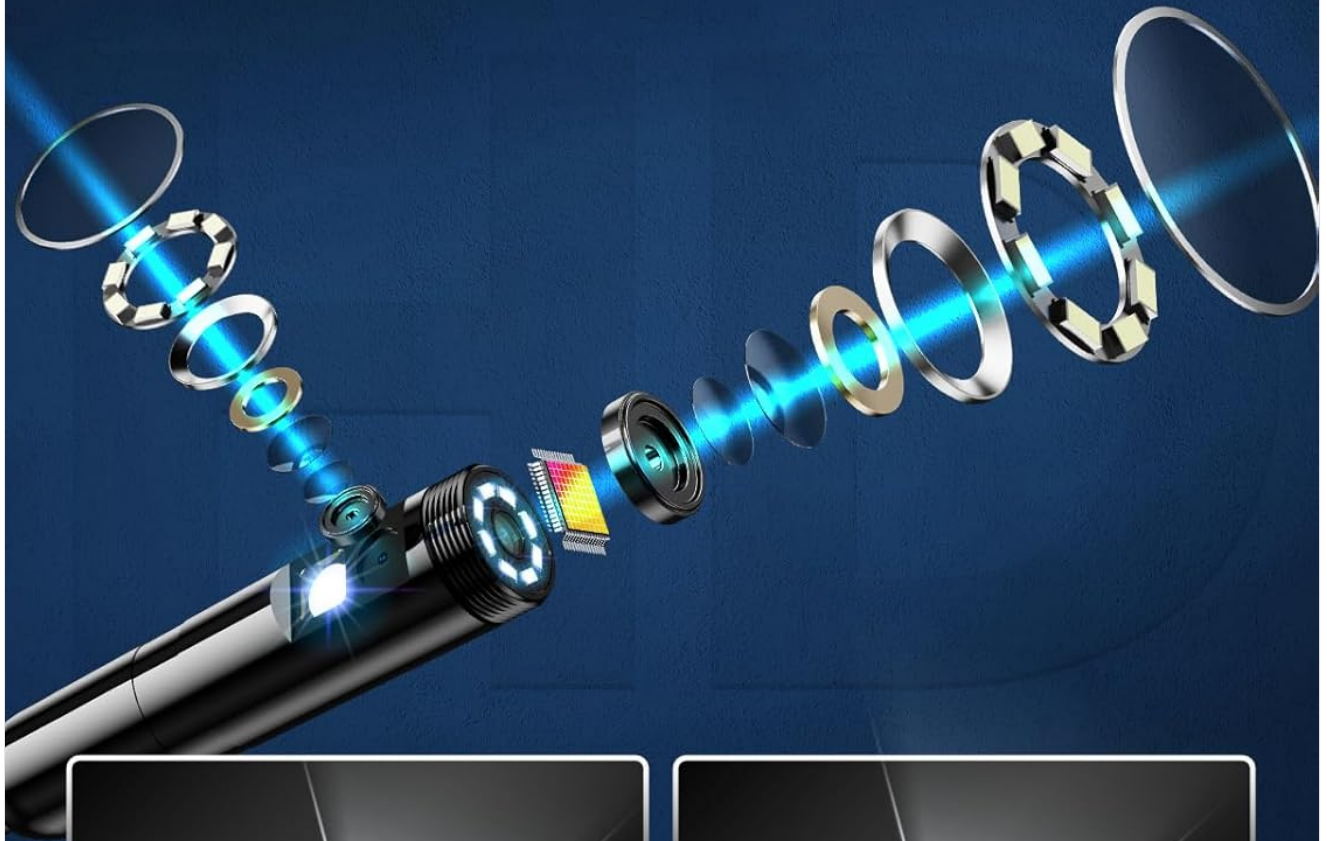


Image: Visual representation of the dual camera setup, highlighting the front and side lenses for enhanced viewing angles.

## Adjustable LED Lights

The camera head is equipped with 8 adjustable LED lights to illuminate dark inspection areas. Use the side button on the cable to adjust the brightness of the LED lights, ensuring optimal visibility for various conditions.

# 8 Adjustable Brights LED Lights

*Slide the side button to adjust  
the brightness of the LED light.*



Image: Detail of the endoscope's LED lights and the control switch for adjusting their brightness.

## Using Accessories

The endoscope comes with several useful accessories that attach to the camera head:

- **Magnet:** Attach the magnet to retrieve small metallic objects from confined spaces.
- **Hook:** Use the hook to pull or retrieve non-metallic items.
- **Mirror:** The side-view mirror attachment provides an alternative perspective for inspecting walls or surfaces at an

angle.

- **Protective Cap:** Use this cap to protect the camera lens when the endoscope is not in use.



Image: Detailed instructions on how to attach and utilize the various included accessories for different inspection needs.

## Waterproof Design

The endoscope camera features an IP67 waterproof rating, allowing it to be submerged up to 3.28 feet (1 meter) deep for up to 1 hour. This makes it suitable for inspecting pipes, drains, and other wet environments.



Image: The endoscope camera head shown in water, emphasizing its waterproof feature and durability.

## Recording Photos and Videos

Once connected and the app is open, you can capture still photos or record videos directly through the app interface. Use the dedicated buttons within the app to switch between photo and video modes and to initiate recording or capture. The physical button on the cable can also be used to snap photos.

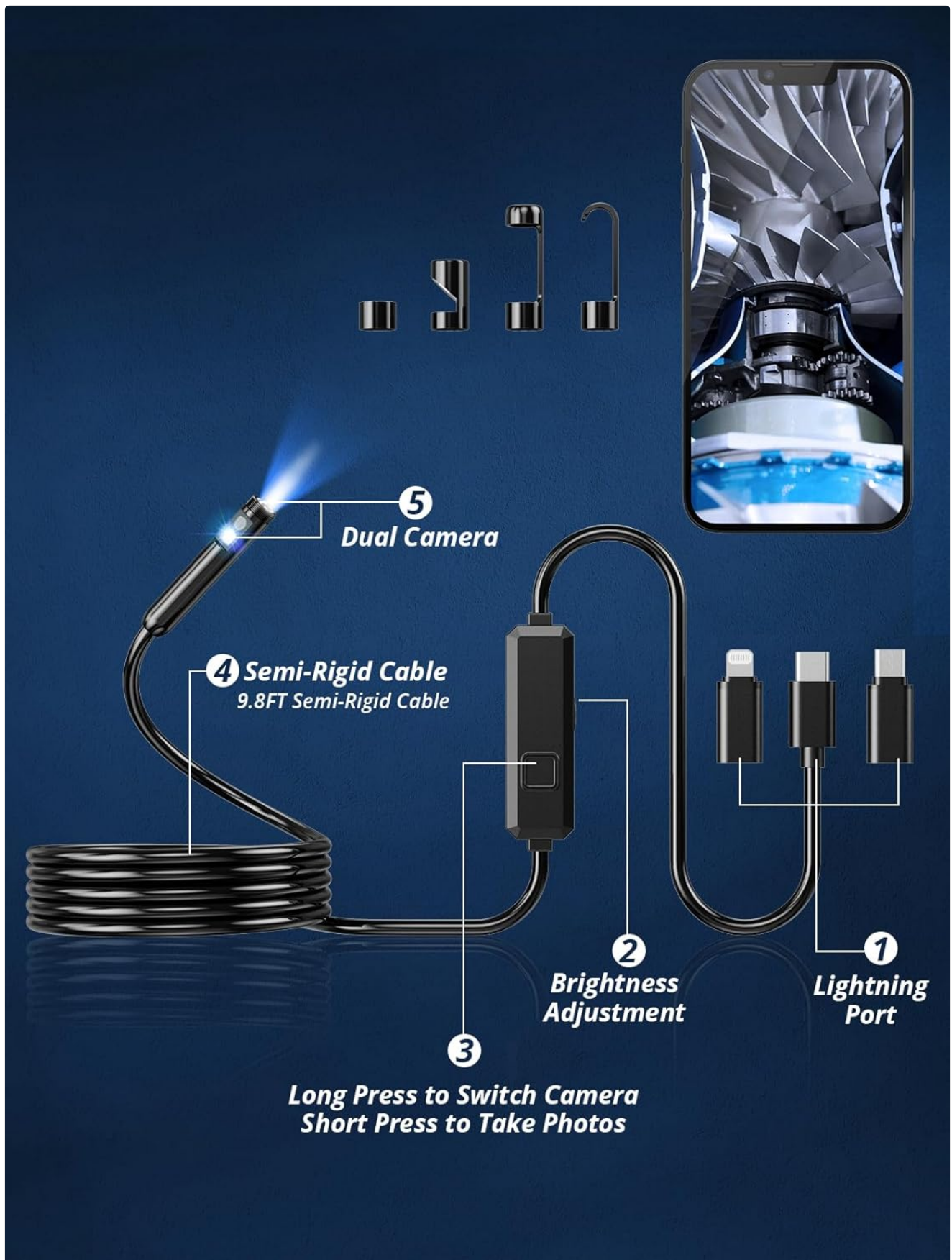


Image: The control unit on the endoscope cable, showing the buttons for adjusting light brightness and switching between cameras or taking photos.

## MAINTENANCE

---

To ensure the longevity and optimal performance of your endoscope camera, follow these maintenance guidelines:

- After each use, especially in dirty or wet environments, gently wipe the camera lens and cable with a soft, damp cloth.
- Avoid using abrasive cleaners or solvents that could damage the lens or cable material.
- Store the endoscope in a cool, dry place, away from direct sunlight and extreme temperatures.
- Ensure all connectors are dry before storage to prevent corrosion.
- Use the provided protective cap for the camera lens when not in use.

## TROUBLESHOOTING

---

If you encounter issues with your endoscope camera, refer to the following common solutions:

- **Product not working (iPhone):** Try unplugging and re-plugging the lightning adapter.
- **Product not working (Android):** Make sure your phone supports OTG (On-The-Go) functionality.
- **Poor image clarity:** Ensure the camera lens is clean and free from debris. Adjust the LED light brightness for better illumination.
- **App connectivity issues:** Verify that the app is correctly installed and updated. Ensure the endoscope is securely connected to your device.

## SPECIFICATIONS

---

Feature	Detail
Model Number	3M
Video Capture Resolution	1920x1440
Camera Diameter	7.9mm
Cable Length	9.8ft (Semi-rigid)
LED Lights	8 Adjustable
Waterproof Rating	IP67
Compatible OS	iOS 9.0+, Android 7+
Manufacturer	Acoath

## WARRANTY AND SUPPORT

---

Acoath is dedicated to providing high-quality products and exceptional visual solutions. For any product-related inquiries,

technical assistance, or warranty claims, please contact Acoath customer service. Refer to the contact information provided in your product packaging or visit the official Acoath website for support details.



Image: The Acoath brand logo, representing their commitment to visual solutions.