

Manuals+

[Q & A](#) | [Deep Search](#) | [Upload](#)

Manuals.plus /

› [CAPXSNOB](#) /

› CAPXSNOB WARRIORS1 Multi-Pod Coffee Maker Instruction Manual

CAPXSNOB SV835L

CAPXSNOB WARRIORS1 Multi-Pod Coffee Maker Instruction Manual

Model: SV835L

1. INTRODUCTION

This manual provides detailed instructions for the safe and efficient operation of your CAPXSNOB WARRIORS1 Multi-Pod Coffee Maker. This versatile machine is designed to brew a variety of coffee types, including Keurig K-Cup pods, Nespresso capsules, Dolce Gusto capsules, and ground coffee. Please read this manual thoroughly before first use and retain it for future reference.

Key Features

- **Modular Design:** Compatible with multiple pod types (NES*, DG*, K-Cup, Ground Coffee).
- **Fast and Fresh Brew:** Instant heating system with 20-bar pressure pump, brewing in approximately 35 seconds.
- **Automatic Hydraulic Lifting System:** Simplifies brewing and prevents common issues.
- **Intelligent Detection System:** Prevents brewing if adapter is incorrectly inserted.
- **Easy Operation & Cleaning:** Automatic cleaning system and detachable, easy-to-clean parts.
- **Programmability:** Customizable cup volumes with three temperature and strength options.
- **Multiple Cup Sizes:** Brews espresso (2 oz), lungo (4 oz), and americano (8 oz), accommodating mugs up to 5.5 inches tall.
- **Compact Design:** Measures less than 4.2 inches in width.
- **Descaling Reminder:** Green lights flash after 200 cups to indicate descaling is needed.

2. PRODUCT OVERVIEW

Familiarize yourself with the components of your CAPXSNOB WARRIORS1 coffee maker.

It's Like It Reads Your Mind



**20 BAR
MAX PUMP PRESSURE**



**Gen3 ALL-IN-ONE
SYSTEM**



**AUTOMATIC HYDRAULIC
LIFTING SYSTEM**



**CUSTOM TEMPERATURE
SETTINGS**



**CUSTOM CUP SIZE
SETTINGS**



**FAST HEATING
SYSTEM**



Image description: An exploded view of the CAPXSNOB WARRIORS1 coffee maker showing its main components: the 28 oz removable water reservoir, coffee scoop, water catch tray, and individual adapters for K-Cup pods, Nespresso 'Original' capsules, Dolce Gusto pods, and ground coffee, along with a coffee dosing funnel.

3. SETUP

Unboxing and Initial Cleaning

- Remove all packaging materials.
- Wash the water tank, drip tray, and all adapters with warm, soapy water. Rinse thoroughly and dry.
- Fill the water reservoir with fresh, clean water.

First Use / Priming the Machine

- Place an empty cup under the dispenser.
- Insert any adapter (without a coffee capsule/ground coffee).
- Press any brew button to run a cycle of hot water through the machine. This primes the pump and cleans the internal components. Repeat 2-3 times.

4. OPERATING INSTRUCTIONS

General Brewing Steps

1. Fill the water reservoir with fresh water.
2. Select the appropriate adapter for your chosen coffee type (K-Cup, Nespresso, Dolce Gusto, or Ground Coffee).
3. Insert the coffee capsule or ground coffee into the adapter. Ensure it is properly seated and, for capsules, pierced.
4. Place the filled adapter into the machine.
5. Place a cup on the drip tray. Ensure the cup height is suitable (up to 5.5 inches).
6. Select your desired brew size/temperature using the control buttons.
7. Press the corresponding button to start brewing.
8. The machine will automatically stop when the selected volume is dispensed.


Your browser does not support the video tag.

Video description: This video provides a comprehensive coffee brewing guide for the CAPXSNOB WARRIORS1 coffee maker, demonstrating the general steps for preparing various coffee types.


Brewing Ground Coffee

For optimal results, use 7-10 grams of medium-fine ground coffee (400-600 µm, similar to fine salt). Do not overpack or tamp too firmly to avoid leaks or blockages.


Custom Temperature Setting




① Enter Temperature Setting:
When all green lights are on, press and hold the Medium Cup and Large Cup buttons until the lights flash, then release. The lights will flash three times and turn off. Within 5 s, press your desired temperature. Otherwise, the machine will exit the setting mode



② Set Low Temperature:
Press the small cup button within 5 s. When the small cup light flashes once and then turns off, it indicates that the low-temperature brewing mode is set



③ Set Medium Temperature:
Press the medium cup button within 5 seconds. When the medium cup light flashes once and then turns off, it indicates that the medium-temperature brewing mode is set



④ Set High Temperature:
Press the large cup button within 5 seconds. When the large cup light flashes once and then turns off, it indicates that the high-temperature brewing mode is set

NOTE: The machine offers 3 temperature levels: Low, Medium, and High, corresponding to the Small, Medium, and Large Cup buttons. Once set, the machine saves the temperature, even after power-off or unplugging.

Image description: A step-by-step visual guide on brewing ground coffee. Steps include inserting the coffee dosing funnel into the adapter, filling with 7-10g of ground coffee, pressing with a tamper, closing the cover, inserting the adapter into the machine, and one-touch brewing.

Customizing Coffee Volume

The machine offers programmable settings for cup volumes (10-180 seconds).



Image description: A visual guide explaining how to customize coffee volume. It shows pressing and holding a brew button for 5 seconds to enter setting mode, then pressing again to stop at the desired volume, which is then saved.

Customizing Coffee Temperature

The machine features three temperature settings: Low, Medium, and High.



Image description: A visual guide explaining how to customize coffee temperature. It details pressing and holding the medium and large buttons to enter temperature setting mode, then selecting low, medium, or high temperature using the small, medium, or large cup buttons respectively.

Your browser does not support the video tag.

Video description: This video demonstrates the process of customizing the coffee temperature settings on the CAPXSNOB WARRIORS1 coffee maker. It shows how to enter the temperature setting program and select between low, medium, and high temperature options.

Your browser does not support the video tag.

Video description: This video provides a quick guide on how to increase the coffee temperature for a hotter brew. It shows a practical demonstration of the steps involved.

5. MAINTENANCE

Automatic Cleaning System

- To clean the water path, brewing chamber, and adapter, simply insert an empty adapter (without a coffee pod) and start a brewing cycle.

Manual Cleaning

- The water tank, drip tray, and adapters are detachable for easy manual cleaning. Wash with warm, soapy water and rinse thoroughly.

Ground Coffee Adapter Maintenance



WARM TIPS

1. This machine is a **20bar pressure espresso machine**, which may produce slight noise during normal operation
2. To accommodate various capsules, you need to manually remove the adapter, which may result in some dripping; please be careful to **avoid burns**
3. The machine offers **3 cup sizes options**, all of which **can be customized to your desired cup size**. For detailed information, please refer to **the manual or details page of the link**
4. It supports **custom temperature Settings**, for specific settings, please refer to **the manual or details page of the link**
5. Please use **7-10 g** medium-fine grind ground (**similar to fine salt**) and press it down with a tamper. If the grind is too fine, it may **clog the filter**; if too coarse, it may affect the **formation of crema**
6. Before each brew, place the **empty adapter (including the filter)** into the rinse to **fully preheat the machine** and **prevent adapter blockages**

Image description: A visual guide on maintaining the ground coffee adapter. It shows steps for disassembly, flushing the filter holes, and proper re-mounting to prevent blockages.

Descaling

After approximately 200 cups, the green lights will flash slowly, indicating that descaling is needed. This is a reminder, not a malfunction, and brewing can continue.

- Follow the descaling steps outlined in the full product manual. This process removes calcium buildup for optimal taste and machine longevity.

It Fits Anywhere, For Anybody, Does Any Flavor



Waking up in the morning, the first cup of coffee awakens both the body and the mind



"A small café"
- A surprise present for the best friend



Enjoy afternoon tea time and satisfy the taste buds of every colleague



Family gathering with multiple flavors all in one

Image description: An image showing the coffee maker with all three brew buttons slowly flashing green, indicating a descaling reminder. Text emphasizes it's not a malfunction and advises following the manual's descaling guide.

6. TROUBLESHOOTING

Leaks During Brewing

- **K-Cup Adapter Seal:** Check if the seal ring on the K-Cup lid is intact. A loose or missing seal can cause leakage.
- **Ground Coffee Grind Size/Tamping:** Using coffee that is too fine (like powdered sugar) or tamping the grounds too firmly can clog the filter and cause excessive pressure, leading to leaks. Use 7-10g of medium-fine ground coffee (400-600 μm).



Image description: A visual guide addressing leaks, advising users to check the K-Cup adapter seal and ensure proper grind size and amount for ground coffee.

Your browser does not support the video tag.

Video description: This video demonstrates common causes of leakage when brewing ground coffee, specifically focusing on issues related to grind size and tamping, and how to prevent them.

Coffee Not Hot Enough

- **Preheat Cycle:** Before each brew, insert an empty adapter and run a cup of hot water to flush out any residual condensation in the pipes. This preheats the machine and the cup.
- **Temperature Setting:** Ensure the temperature setting is adjusted to the highest level according to the instructions in the "Customizing Coffee Temperature" section.

Tips for Increasing Temperature

Before each brew, insert the adapter (without a capsule) and run a cup of hot water to flush out any residual condensation in the pipes. Then, start brewing your coffee. Additionally, you can set the temperature to the highest level according to the instructions on the product TEMP settings page



Image description: An image providing tips for increasing coffee temperature, suggesting a pre-brew hot water flush and setting the machine to the highest temperature.

Milk Powder & Instant Pods

MAINTENANCE TIPS FOR GROUND COFFEE ADAPTER

Automatic: Insert the empty adapter into the machine and rinse it

Manual: Clean the top filter holes and bottom stainless steel filters to prevent blockages and leakage, ensuring smooth coffee flow(see chart below)



Image description: A note advising to brew instant or milk pods with Medium or Large Cup only and never to interrupt brewing to prevent leaks.

7. SPECIFICATIONS

Feature	Detail
Brand	CAPXSNOB
Model Name	Warriors 1
Item Model Number	SV835L
Product Dimensions	11.22"D x 5.3"W x 10.83"H
Item Weight	5.82 pounds
Color	black
Voltage	110 Volts
Coffee Maker Type	Espresso Machine
Operation Mode	Semi-Automatic
Coffee Input Type	Capsule, Ground, Pod
Special Features	Adjustable Brew Strength, Auto Shut-Off, Portable, Programmable, Self-Cleaning
Included Components	DG Pods Adapter, Ground Coffee Adapter, K Cup Adapter, Original Pods Adapter, Water Tank
Specific Uses For Product	Americano, Cappuccino, Espresso, Latte

8. WARRANTY AND SUPPORT

For any product-related questions or support, please contact our customer support team through CAPXSNOB's official channels. We aim to respond within 24 hours on business days.

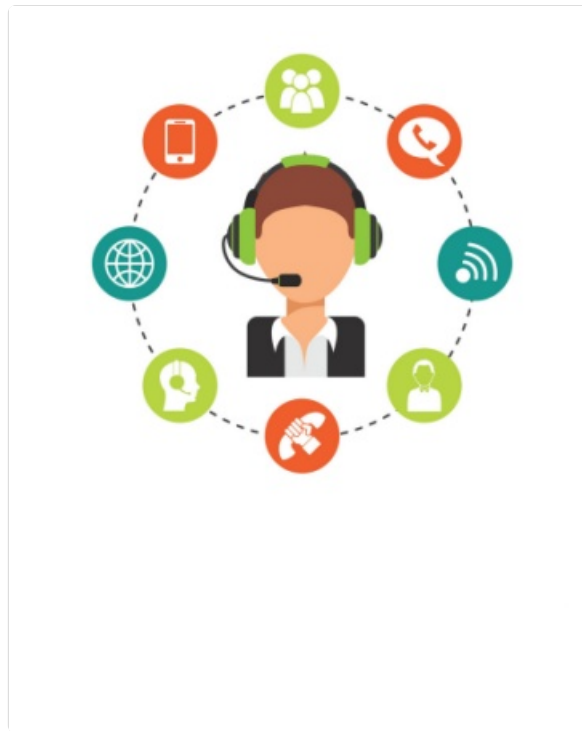


Image description: An illustration of a customer support representative surrounded by communication icons, symbolizing available support channels.

You can visit the official CAPXSNOB store for more information: [CAPXSNOB Official Store](#).