

[Manuals.plus](#) /

> [Ivifloae](#) /

> Ivifloae H80 Mobile Hotspot 4G LTE Router User Manual

## Ivifloae H80

# Ivifloae H80 Mobile Hotspot 4G LTE Router User Manual

Model: H80

## 1. INTRODUCTION

---

This manual provides detailed instructions for the setup, operation, maintenance, and troubleshooting of your Ivifloae H80 Mobile Hotspot 4G LTE Router. Please read this manual carefully before using the device to ensure proper functionality and to maximize your user experience.

The H80 Mobile Hotspot is designed to provide high-speed 3G and 4G network access, supporting main frequency bands globally. It is portable, features an LED display, and allows up to 10 users to share the internet connection simultaneously.



**Figure 1:** Front view of the Ivifloae H80 Mobile Hotspot, showing the LED display and compact design.

## 2. PACKAGE CONTENTS

---

Verify that all items listed below are included in your package:

- 1 x Ivifloae H80 4G Router
- 1 x 2400mAh Lithium Battery
- 1 x Charging Cable
- 1 x User Manual (this document)

## 3. PRODUCT OVERVIEW

---

The Ivifloae H80 Mobile Hotspot features a sleek design with an intuitive LED display to indicate device status. Familiarize yourself with the device components.



WiFi LED smart display  
Easy to operate  
Lightweight and slim design  
Easy to carry



**Figure 2:** Close-up of the H80's LED smart display, showing indicators for WiFi, signal strength, and battery status.



#### 4G LTE Mobile WiFi Router

Provides users with 3G 4G high speed Internet access  
Supports 3G 4G main band in most countries and carriers worldwide  
for Windows7, for Windows 8, for Windows 10 and for Linux

**Figure 3:** Side view of the H80 Mobile Hotspot, illustrating its slim profile and button placement.

## 4. SETUP

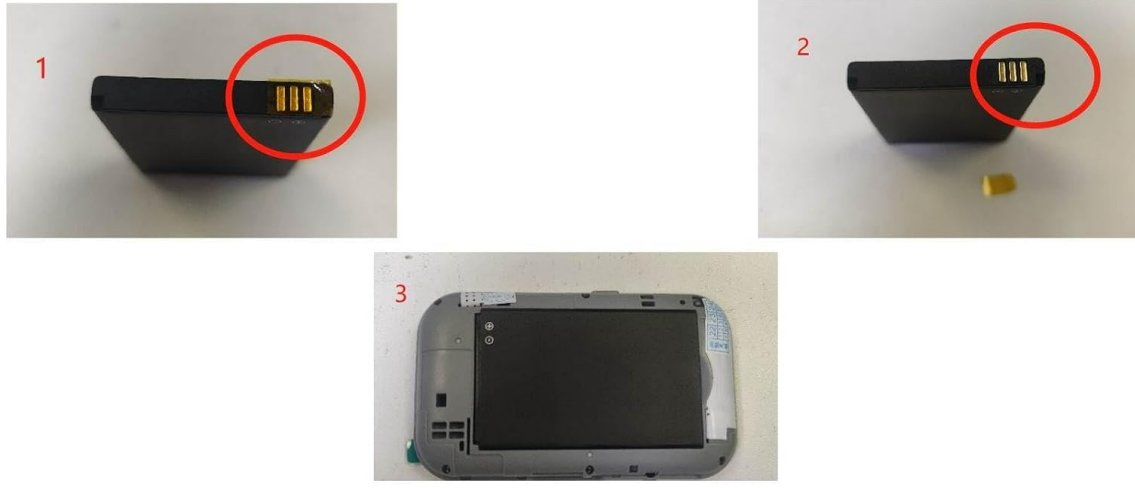
---

Follow these steps to set up your Ivifloae H80 Mobile Hotspot for the first time.

### 1. Install the Battery:

Carefully remove the back cover of the router. Insert the provided 2400mAh lithium battery into its compartment. **Important:** Before powering on, check for and remove any protective partition sticker or insulation tape from the battery's contacts. Failure to do so will prevent the device from powering on.

(Take out the battery, tear off the insulation tape of the battery, insert the device and turn it on)



**Figure 4:** Visual guide for battery installation. Image 1 shows the battery with insulation tape, Image 2 shows the tape removed, and Image 3 shows the battery inserted into the device.

**2. Insert the SIM Card:**

Locate the standard SIM card slot. Gently insert your standard SIM card into the slot until it clicks into place. Ensure the SIM card is correctly oriented.

**3. Replace the Back Cover:**

Align the back cover and press it firmly until it snaps into place.

**4. Power On:**

Press and hold the power button (usually located on the side) for a few seconds until the LED display illuminates.

## 5. OPERATING INSTRUCTIONS

---

Once the device is set up and powered on, you can connect your devices to the mobile hotspot.

**1. Check LED Indicators:**

Observe the LED display. It will show the network signal strength, Wi-Fi status, and battery level. A stable signal indicator means the device is connected to the mobile network.

**2. Connect Devices via Wi-Fi:**

On your mobile phone, laptop, tablet, or other Wi-Fi enabled device, search for available Wi-Fi networks.

The network name (SSID) and password are typically found on a sticker inside the battery compartment or on the device itself. Select the hotspot's SSID and enter the password to connect.

**3. Internet Access:**

Once connected, your device should have internet access. The H80 supports up to 10 simultaneous users.

**4. Power Off:**

To turn off the device, press and hold the power button until the LED display turns off.



For car users, business travelers and outdoor travelers  
 Supports up to 10 users  
 2400mAh high capacity battery  
 Standby up to 72 hours

Figure 5: The H80 Mobile Hotspot in an outdoor setting, demonstrating its portability for travel and business use.

## 6. MAINTENANCE

Proper maintenance ensures the longevity and optimal performance of your mobile hotspot.

- **Charging:** Use the provided charging cable and a compatible power adapter (not included) to charge the device. The 2400mAh battery provides up to 72 hours of standby time.
- **Cleaning:** Wipe the device with a soft, dry cloth. Avoid using liquid cleaners or abrasive materials.
- **Storage:** Store the device in a cool, dry place away from direct sunlight and extreme temperatures.
- **Battery Care:** Do not expose the battery to high temperatures or puncture it. If the device will not be used for an extended period, charge it periodically to maintain battery health.

## 7. TROUBLESHOOTING

If you encounter issues with your Ivifloae H80 Mobile Hotspot, refer to the following common problems and solutions:

Problem	Possible Cause / Solution
---------	---------------------------

Problem	Possible Cause / Solution
<b>Device does not power on.</b>	<ul style="list-style-type: none"> <li>o Battery is not charged. Charge the device for at least 30 minutes.</li> <li>o Protective sticker on battery contacts not removed. Remove any insulation tape from the battery contacts.</li> <li>o Battery not properly installed. Reinstall the battery, ensuring proper contact.</li> </ul>
<b>No network signal / Cannot access internet.</b>	<ul style="list-style-type: none"> <li>o SIM card not inserted correctly or not activated. Reinsert the SIM card and ensure it is active with your carrier.</li> <li>o Out of network coverage area. Move to an area with better signal.</li> <li>o Data plan expired or insufficient. Contact your mobile carrier.</li> <li>o Device settings incorrect. Restart the device.</li> </ul>
<b>Cannot connect to Wi-Fi.</b>	<ul style="list-style-type: none"> <li>o Incorrect Wi-Fi password. Verify the password (found on the device or in the manual).</li> <li>o Too many devices connected. The H80 supports up to 10 users. Disconnect some devices if exceeding this limit.</li> <li>o Device is too far from the hotspot. Move closer to the hotspot.</li> <li>o Restart both the hotspot and the connecting device.</li> </ul>
<b>Slow internet speed.</b>	<ul style="list-style-type: none"> <li>o Weak network signal. Move to an area with stronger signal.</li> <li>o Network congestion. This can happen in busy areas or during peak times.</li> <li>o Too many devices connected or high data usage. Reduce the number of connected devices or data-intensive activities.</li> <li>o Data plan speed limitations. Check your mobile data plan details.</li> </ul>

## 8. SPECIFICATIONS

---

Technical specifications for the Ivifloae H80 Mobile Hotspot.

Feature	Detail
<b>Model</b>	H80
<b>Brand</b>	Ivifloae
<b>Item Type</b>	4G Router
<b>Color</b>	White
<b>Material</b>	ABS
<b>Card Slot</b>	Standard SIM Card
<b>4G LTE Band</b>	B1, B3, B5, B40
<b>3G UMTS WCDMA</b>	B1
<b>Peak Download Rate</b>	150Mbps
<b>Peak Upload Rate</b>	50Mbps
<b>Wi-Fi Standard</b>	802.11 b/g/n (Wi-Fi 4)

Feature	Detail
Sharing Capacity	Up to 10 Users
Battery Type	Built-in 2400mAh Lithium Battery
Standby Time	Up to 72 hours
Connectivity Technology	4G LTE, 3G, Wi-Fi
Security Protocol	WPA2, WPA3
Operating System Compatibility	Windows 7, Windows 8, Windows 10, Linux

## 9. WARRANTY AND SUPPORT

---

For warranty information, please refer to the documentation included with your purchase or visit the official Ivifloae website. For technical support or further assistance, please contact Ivifloae customer service through their official channels.