

FASTWD L211-EEA

FASTWD Kids Tablet User Manual

Model: L211-EEA

INTRODUCTION

Welcome to the FASTWD Kids Tablet user manual. This guide provides detailed instructions on how to set up, operate, maintain, and troubleshoot your new tablet. Designed specifically for children, this tablet combines robust performance with essential child safety features, offering a secure and engaging learning and entertainment experience.

Please read this manual carefully before using the device to ensure proper operation and to maximize its lifespan.

1. SETUP

1.1. Unboxing and Initial Charge

Carefully remove all components from the packaging. You should find the FASTWD Kids Tablet, a protective case, a USB-C charging cable, and a power adapter.

Before first use, fully charge the tablet. Connect the USB-C cable to the tablet's charging port and the other end to the power adapter. Plug the adapter into a wall outlet. The charging indicator will illuminate.



Image: The FASTWD Kids Tablet, showcasing its 10-inch screen, green protective case, and key specifications like 36GB RAM, 128GB ROM, and Android 14 operating system.

1.2. Powering On and Initial Configuration

1. Press and hold the power button located on the side of the tablet until the FASTWD logo appears on the screen.
2. Follow the on-screen prompts to select your preferred language, region, and connect to a Wi-Fi network.
3. Sign in with your Google account or create a new one. This is necessary to access the Google Play Store and other Google services.
4. Set up parental controls as desired. The tablet comes with pre-installed child safety features.

Android 14+GMS Certification+10 inch



36(12+24)GB
RAM



128 GB
ROM



256 GB



Expandable
Capacity

Image: The tablet's home screen displaying various educational and entertainment applications, highlighting features like privacy settings, customizable widgets, and access to the Google Play Store for app downloads.

2. OPERATING THE TABLET

2.1. Basic Navigation

- **Touch Gestures:** Tap to select, swipe to scroll, pinch to zoom.
- **Home Screen:** Access your installed apps and widgets.
- **Notification Panel:** Swipe down from the top of the screen to access quick settings and notifications.
- **App Drawer:** Swipe up from the bottom of the screen to view all installed applications.

2.2. Parental Control Features

The FASTWD Kids Tablet includes a robust parental control system to ensure a safe digital environment for children. This system allows you to manage:

- **Time Management:** Set daily limits for tablet usage.
- **App Management:** Control which applications your child can access.
- **Content Management:** Filter inappropriate content from web browsing and app stores.

Access these settings through the dedicated "Kids Space" or "Parental Control" app on the tablet.

Beruhigender Kindersicherungsmodus

Das von Google zertifizierte 10-Zoll-Tablet für Kinder bietet eine breite Palette an Lern-, Programmier-, Spiele- und Video-Apps für Kinder



Zeitmanagement



App-Verwaltung



Verwaltung von Inhalten

Image: A child and adult interacting with the tablet, illustrating the ease of use and the presence of child safety features. Icons below represent time management, app management, and content management, all part of the tablet's parental control system.

2.3. Installing and Managing Apps

Apps can be downloaded from the Google Play Store. Ensure parental controls are configured to approve app installations if desired.

- Open the **Play Store** app.
- Search for desired apps or browse categories.
- Tap **Install** to download and install an app.
- To uninstall an app, go to **Settings > Apps & notifications > See all apps** select the app, and tap **Uninstall**.



Image: An infographic highlighting key features of the FASTWD 10-inch Kids Tablet, including WiFi connectivity, 36GB RAM, 128GB ROM, expandable storage via TF card (up to 256GB), Google Play access, and parental control capabilities.

2.4. Connectivity and Ports

The FASTWD Kids Tablet offers various connectivity options and ports for enhanced functionality:

- **3.5mm Audio Jack:** For connecting headphones or external speakers.
- **USB Type-C Port:** Used for charging the tablet and for data transfer.
- **OTG (On-The-Go) Support:** Allows the tablet to act as a host, enabling connection of USB devices like flash drives, keyboards, or mice (requires an OTG adapter, sold separately).
- **MicroSD Card Slot:** Expand the tablet's storage capacity beyond the built-in 128GB.



Image: A collage showcasing various features and usage scenarios of the tablet, including its 3.5mm audio jack, OTG support, USB Type-C charging port (5V/2A), and its robust protective design. It also depicts children happily using the tablet, emphasizing its suitability as a gift.

3. MAINTENANCE

3.1. Cleaning the Tablet

To clean the screen, use a soft, lint-free cloth. For stubborn smudges, slightly dampen the cloth with water or a screen cleaner. Avoid using harsh chemicals or abrasive materials.

The protective case can be wiped clean with a damp cloth and mild soap if necessary.

All-in-one tablet with its own protective case

The 10-inch tablet comes with its own protective case, You don't need to install an additional protective cover



Image: A detailed view of the FASTWD Kids Tablet's integrated protective case, emphasizing its full protection, anti-drop, and anti-shock design. This case is designed to withstand typical child usage.

3.2. Battery Care

- Avoid completely draining the battery regularly.
- Do not expose the tablet to extreme temperatures.
- Use only the provided charger or a certified compatible charger.

3.3. Software Updates

Periodically check for software updates to ensure optimal performance and security. Go to **Settings > System > System update** to check for and install available updates.

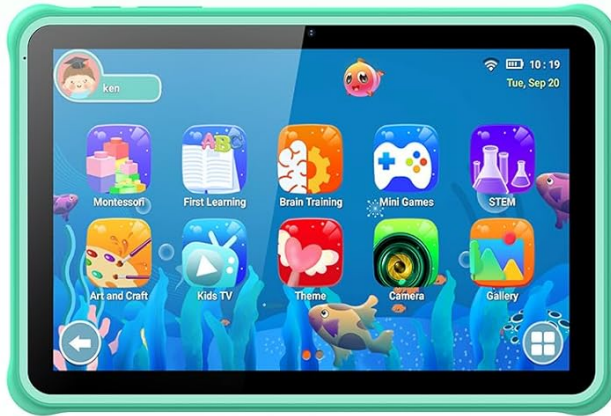
4. TROUBLESHOOTING

Problem	Possible Cause	Solution
Tablet does not power on.	Low battery; system crash.	Charge the tablet for at least 30 minutes. If still unresponsive, press and hold the power button for 10-15 seconds to force a restart.
Wi-Fi connection issues.	Incorrect password; router issue; tablet Wi-Fi disabled.	Check Wi-Fi password. Restart your router. Toggle Wi-Fi off and on in tablet settings.
Apps are crashing or freezing.	Insufficient memory; app bug; outdated software.	Close background apps. Clear app cache (Settings > Apps > [App Name] > Storage & cache > Clear cache). Update the app or tablet software.
Screen is unresponsive.	Temporary software glitch.	Force restart the tablet by holding the power button for 10-15 seconds.

5. SPECIFICATIONS

Feature	Detail
Brand	FASTWD
Model Number	L211-EEA
Series	L231-EEA
Color	Green
Screen Size	10.1 Inches
Resolution	1280x800 IPS
Installed RAM Size	36 GB
Memory Storage Capacity	128 GB (Expandable via SD card)
Connectivity Type	Wi-Fi (802.11ac), Bluetooth 5.0
Operating System	Android 14
Battery	1 9V Battery (included)
Age Range (description)	Child

FASTWD Kids tablet



- ✓ 10 inch
- ✓ Android 14
- ✓ HD 1280*800
- ✓ 36GB+128GB
- ✓ 5MP+8MP

Other Kids tablet



- ✗ 7 inch
- ✗ Android 11
- ✗ 1024*600
- ✗ 4GB+32GB
- ✗ 2MP+2MP

Image: A visual comparison highlighting the superior specifications of the FASTWD Kids Tablet (10-inch, Android 14, HD 1280x800, 36GB+128GB, 5MP+8MP cameras) against a generic "Other Kids tablet" with lower specs.

6. WARRANTY AND SUPPORT

6.1. Warranty Information

The FASTWD Kids Tablet comes with a standard manufacturer's warranty. Please refer to the warranty card included in your product packaging for specific terms and conditions, including warranty period and coverage details. Keep your purchase receipt as proof of purchase for warranty claims.



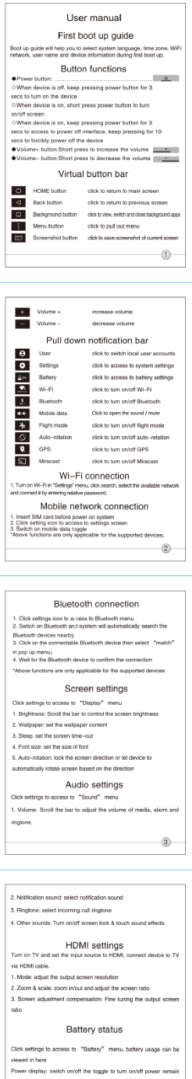
6.2. Customer Support

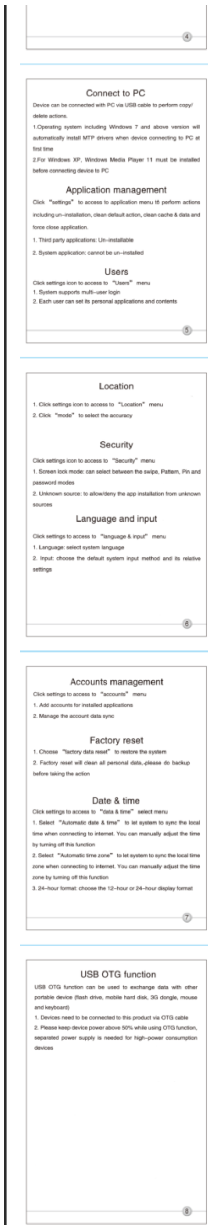
For technical assistance, troubleshooting beyond this manual, or warranty inquiries, please contact FASTWD customer support. Contact information can typically be found on the product packaging, the official FASTWD website, or through your retailer's support channels.

When contacting support, please have your tablet's model number (L211-EEA) and purchase details ready.

© 2025 FASTWD. All rights reserved.
This manual is subject to change without notice.

Related Documents - L211-EEA

	<p>FASTWD Tablet User Manual</p> <p>Comprehensive user manual for the FASTWD Tablet, covering setup, features, troubleshooting, and warranty information. Learn how to get started, navigate the home screen, manage settings, connect to networks, and troubleshoot common issues.</p>
	<p>How to Install a Tablet Screen Protector: Step-by-Step Guide</p> <p>Concise guide on installing a screen protector on your tablet, covering cleaning, alignment, and bubble removal. Suitable for TOSCIDO, YUMKEM, HEASUR, and other compatible tablets.</p>
	<p>YUMKEM L211 Tablet User Manual and First Boot Up Guide</p>



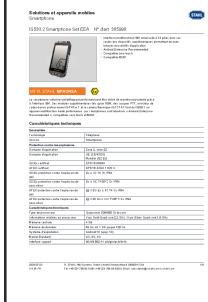
A comprehensive guide to the YUMKEM L211 tablet, covering initial setup, button functions, connectivity options (Wi-Fi, Bluetooth, Mobile Data, HDMI), screen and audio settings, PC connection, application management, user accounts, location services, security features, language and input, account management, factory reset, date and time settings, and USB OTG functionality.



[FASTWD Tablet User Manual](#)
Comprehensive user manual for the FASTWD Tablet, covering setup, features, troubleshooting, and warranty information. Learn how to get started, navigate the home screen, manage settings, connect to networks, and troubleshoot common issues.



[R. STAHL IS930.M1 Tablet Set Mining EEA: Robust Industrial Tablet for Hazardous Environments](#)
Discover the R. STAHL IS930.M1 Tablet Set Mining EEA, an explosion-proof Android tablet designed for mobile workers in mining and hazardous environments. Featuring a durable design, advanced specifications, and safety certifications, it's ideal for IoT maintenance applications.



[IS530.2 Smartphone Set EEA: Technical Specifications and Features](#)
Detailed technical specifications and features of the IS530.2 Smartphone Set EEA by R. STAHL, including explosion protection, electrical characteristics, display, and mechanical specifications.

