

Manuals+

[Q & A](#) | [Deep Search](#) | [Upload](#)

manuals.plus /

› [Meidase](#) /

› [Meidase P70 Trail Camera Instruction Manual](#)

Meidase P70

Meidase P70 Trail Camera Instruction Manual

This manual provides detailed instructions for the setup, operation, and maintenance of your Meidase P70 Trail Camera. Please read thoroughly to ensure proper use and optimal performance.

1. SETUP

1.1 Package Contents

Verify that all items are present in your package:

- 1 x Meidase P70 Trail Camera
- 1 x USB Cable
- 1 x Mounting Strap

Note: A standard SD card (up to 256GB, Class 10 or higher recommended) and 8 AA batteries are not included and must be purchased separately.

1.2 Initial Preparation

1. Gently remove any protective films from the camera's lens and sensors.
2. Open the camera's side latch to access the interior.
3. Insert your standard SD card into the designated slot. Ensure it is inserted correctly until it clicks into place.
4. Install 8 AA batteries into the battery compartment. For optimal performance, especially in low temperatures, lithium batteries are recommended. Ensure correct polarity.
5. Slide the power switch to the 'ON' position. The camera display will activate.
6. Press the 'MENU' button to access settings. Navigate to 'Format SD Card' and press 'OK' to format your SD card for first use. This ensures compatibility and optimal performance.

Video: Quick Start Guide for Meidase Trail Cameras (P60, P60 Pro, P70). This video demonstrates the steps for preparing your camera, including removing protective films, inserting the SD card, installing batteries, and formatting the SD card.

1.3 Mounting the Camera

Mount the camera on a sturdy tree or post using the provided strap. The recommended installation height is 0.5 to 1 meter (approximately 1.6 to 3.3 feet) from the ground. Adjust the height based on your specific application and target animal size to ensure optimal detection and capture.

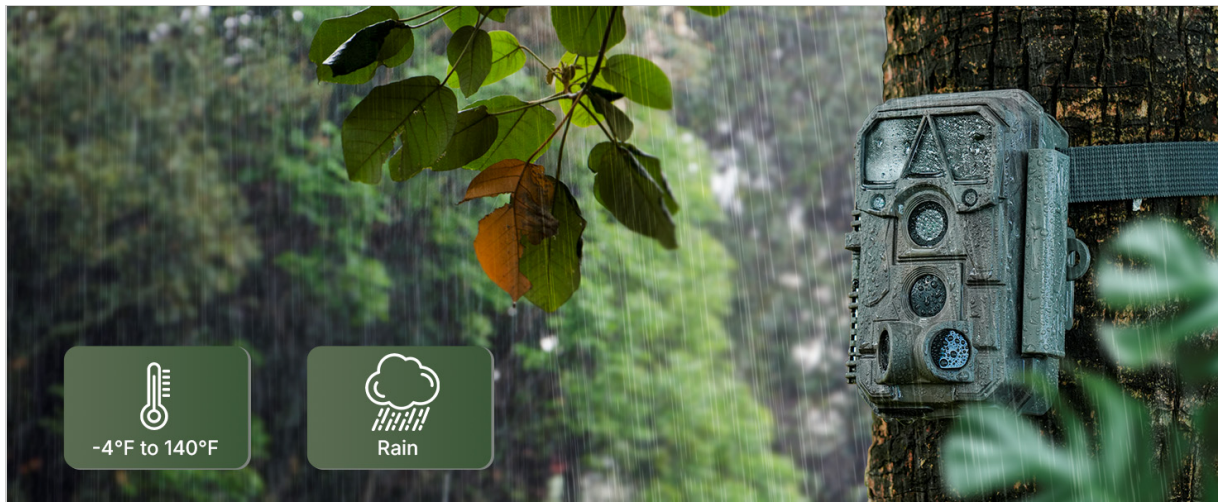


Image: Meidase P70 Trail Camera mounted on a tree, showcasing its robust, weatherproof housing designed for various climates.

2. OPERATING INSTRUCTIONS

2.1 Basic Operation

- **Power On/Off:** Slide the power switch to 'ON' to power on the camera. To power off, slide the switch to 'OFF'.
- **Menu Navigation:** Use the 'MENU' button to access settings. Use the arrow keys (Up, Down, Left, Right) and 'OK' button to navigate through options and confirm selections.
- **Motion Detection Test:** From the menu, navigate to 'Motion Test' and press 'OK'. Make movements in front of the camera; the red LED light will blink to indicate that motion is being captured. This helps verify sensor functionality and optimal camera placement.
- **Enter Working Mode:** After configuring all desired settings, press the 'START' button. The camera will initiate a countdown and then enter working mode, ready to capture images or videos based on motion detection.

2.2 Key Features and Settings

- **Exceptional Image and Video Quality:** The P70 captures crisp 64MP still images and records 1296p HD videos. These settings can be adjusted in the menu to balance quality and storage space.
- **Bright 100ft No-Glow Night Vision:** Equipped with a large f/1.6 aperture optical lens and invisible 940nm infrared LEDs, the camera captures more light, providing brighter night vision up to 100 feet without disturbing wildlife.
- **Rapid 0.1s Trigger Speed:** With two additional side sensors, the camera achieves a rapid 0.1-second trigger speed when animals move from the side into the central viewing zone, minimizing missed shots.
- **H.264 Video Technology:** The camera's H.264 video technology significantly reduces file size and speeds up downloading, while its .mp4 or .mov format ensures wide compatibility with most players.
- **2.4-inch Color Display:** The camera features a 2.4-inch color display and an intuitive menu system for easy setup and review of captured media.



Image: Comparison of image clarity at 32MP versus 64MP, demonstrating the enhanced detail captured by the P70 Trail Camera.

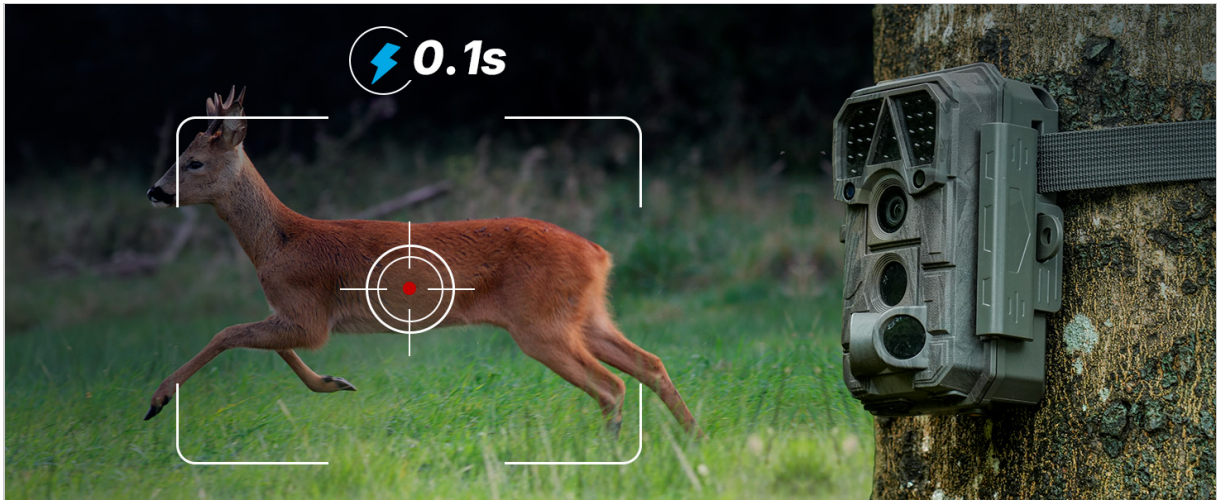


Image: The camera's 0.1-second trigger speed captures fast-moving subjects like a deer in motion.

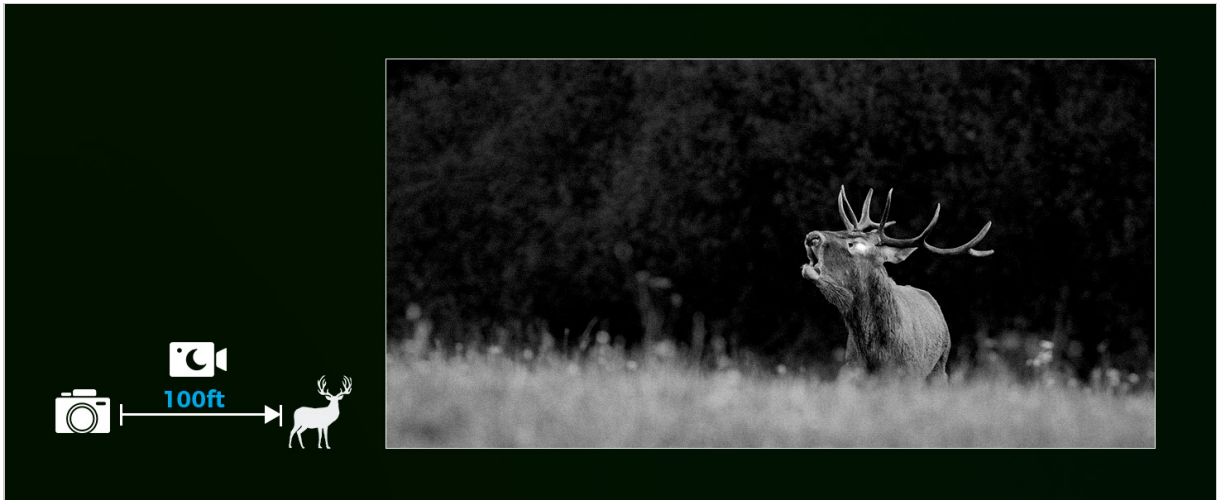


Image: A deer captured clearly at night using the camera's 100ft No-Glow IR Night Vision.



Image: The camera's 2.4-inch color screen provides a user-friendly interface for settings and playback.

3. MAINTENANCE

- **Cleaning:** Regularly clean the camera lens and IR sensors with a soft, dry cloth to ensure clear images and proper sensor function. Avoid abrasive materials.
- **Battery Replacement:** Replace batteries when the low battery indicator appears on the screen. Always use fresh batteries for consistent performance.
- **SD Card Management:** Periodically format the SD card to prevent data corruption and ensure optimal storage. Back up important files to a computer before formatting.
- **Storage:** When not in use, store the camera in a cool, dry place, away from direct sunlight and extreme temperatures. Remove batteries for long-term storage to prevent leakage.

4. TROUBLESHOOTING

- **Camera Not Powering On:**
 - Check battery installation and ensure batteries are fresh and correctly oriented.
 - Verify the power switch is in the 'ON' position.
- **No Images/Videos Captured:**
 - Ensure the SD card is inserted correctly and formatted.
 - Check battery level.
 - Perform a 'Motion Test' to confirm sensor functionality and optimal camera placement.
 - Adjust motion sensitivity settings if necessary.
- **Poor Image/Video Quality:**
 - Clean the camera lens and IR sensors with a soft cloth.
 - Ensure the camera is mounted stably to prevent blur from movement.
 - Check resolution settings in the menu to ensure desired quality is selected.
- **Short Battery Life:**
 - Use high-quality lithium batteries, especially in cold weather, for extended life.
 - Reduce video length or frequency of captures if possible through menu settings.
 - Ensure the camera is not constantly triggered by irrelevant motion (e.g., swaying branches, tall grass).

5. SPECIFICATIONS

Indoor/Outdoor Usage	Outdoor
Video Capture Resolution	1296p
Included Components	USB cable
Item Dimensions (L x W x H)	2.4 x 5.6 x 8 inches
Item Weight	2.4 pounds (1.09 Kilograms)
Video Capture Format	MP4
Special Features	Motion Sensor, Night Vision, Time-Lapse
Brand	Meidase
Model Name	P70
Connectivity Technology	Non (Non-Cellular, Non-WiFi)

6. WARRANTY AND SUPPORT

For detailed warranty information, product registration, and technical support, please refer to the official Meidase website or contact customer service directly. Keep your purchase receipt or proof of purchase for any warranty claims.

You can visit the Meidase Store for more information: [Meidase Store](#)