

Casaria Lucia 110x40cm

Casaria Lucia Dressing Table with Light and Stool User Manual

Model: Lucia 110x40cm

1. INTRODUCTION

Thank you for choosing the Casaria Lucia Dressing Table. This modern vanity unit is designed to enhance your daily beauty routine with its functional features and elegant design. It includes a large mirror, ample storage, a drawer with an integrated distance sensor light, and a comfortable, height-adjustable rolling stool.

Please read this manual carefully before assembly and use to ensure proper installation, operation, and maintenance of your new dressing table.



Image 1.1: The Casaria Lucia Dressing Table with its accompanying stool.

2. SAFETY INSTRUCTIONS

- Always follow the assembly instructions carefully to prevent injury or damage to the product.
- Ensure all screws and fasteners are securely tightened before use. Periodically check and re-tighten if necessary.
- Do not overload shelves or drawers. Distribute weight evenly.
- For added stability and safety, especially in households with children, utilize the provided wall mounting option to secure the dressing table to a wall.
- Keep small parts out of reach of children during assembly.
- Avoid placing hot items directly on the surface without protection.
- Do not stand or climb on the dressing table or stool.

3. PACKAGE CONTENTS

Before beginning assembly, please verify that all components are present and undamaged. If any parts are missing or damaged, contact customer support.

- Dressing Table components (panels, hardware)
- Large Mirror
- Drawer with integrated light and distance sensor
- Rolling Stool (components for assembly)
- Wall mounting hardware
- Assembly instructions (this manual)

4. SETUP AND ASSEMBLY

Assembly of the Casaria Lucia Dressing Table is designed to be straightforward. It is recommended to have two people for certain steps, especially when handling larger panels or the mirror. A Phillips head screwdriver and possibly a hammer may be required (not included).

4.1. Dressing Table Assembly

1. Unpack all components and lay them out on a clean, soft surface to prevent scratches.
2. Follow the step-by-step diagrams provided in the separate assembly guide (if included) or refer to the general assembly principles for furniture of this type.
3. Assemble the main frame of the dressing table, ensuring all connections are secure.
4. Install the drawer runners and then the drawer itself.
5. Attach the mirror and the side shelves to the main structure.

4.2. Stool Assembly

1. Attach the wheels to the base of the stool.
2. Insert the gas lift cylinder into the base.
3. Attach the seat to the top of the gas lift cylinder.



Image 4.1: Diagram showing dimensions and wall mounting points for the dressing table.

4.3. Wall Mounting (Recommended)

To enhance stability and prevent tipping, especially if you have children or pets, it is highly recommended to secure the dressing table to a wall using the provided anti-tip hardware.

1. Position the dressing table in its desired location.
2. Mark the wall where the anti-tip brackets will be attached, aligning with the pre-drilled holes on the back of the dressing table.
3. Drill pilot holes in the wall (use appropriate drill bit for your wall type, e.g., drywall anchors for plasterboard).
4. Secure the wall brackets to the wall.
5. Attach the straps or cables from the dressing table to the wall brackets, ensuring they are taut.

5. OPERATING INSTRUCTIONS

5.1. Drawer Light with Distance Sensor

The large drawer is equipped with an integrated light that operates automatically via a distance sensor. When the

drawer is opened, the sensor detects the movement and illuminates the interior. When the drawer is closed, the light will automatically turn off.



Image 5.1: The illuminated drawer interior with three compartments for organization.

5.2. Adjustable Rolling Stool

The included rolling stool offers flexibility and comfort:

- **Height Adjustment:** To adjust the seat height, locate the lever under the seat. While seated, pull the lever up to lower the seat. To raise the seat, stand up and pull the lever up. Release the lever at the desired height. The seat height is infinitely adjustable from 46 cm to 60 cm.
- **360° Rotation:** The stool seat can rotate 360 degrees, allowing for easy movement and access.
- **Mobility:** The smooth-running wheels allow the stool to be easily moved across various floor surfaces, including parquet and carpet.

INKLUSIVE ROLLHOCKER



Belastbar



Ergonomisch



5 leichtgängige
Doppelrollen



Pflegeleicht
& langlebig

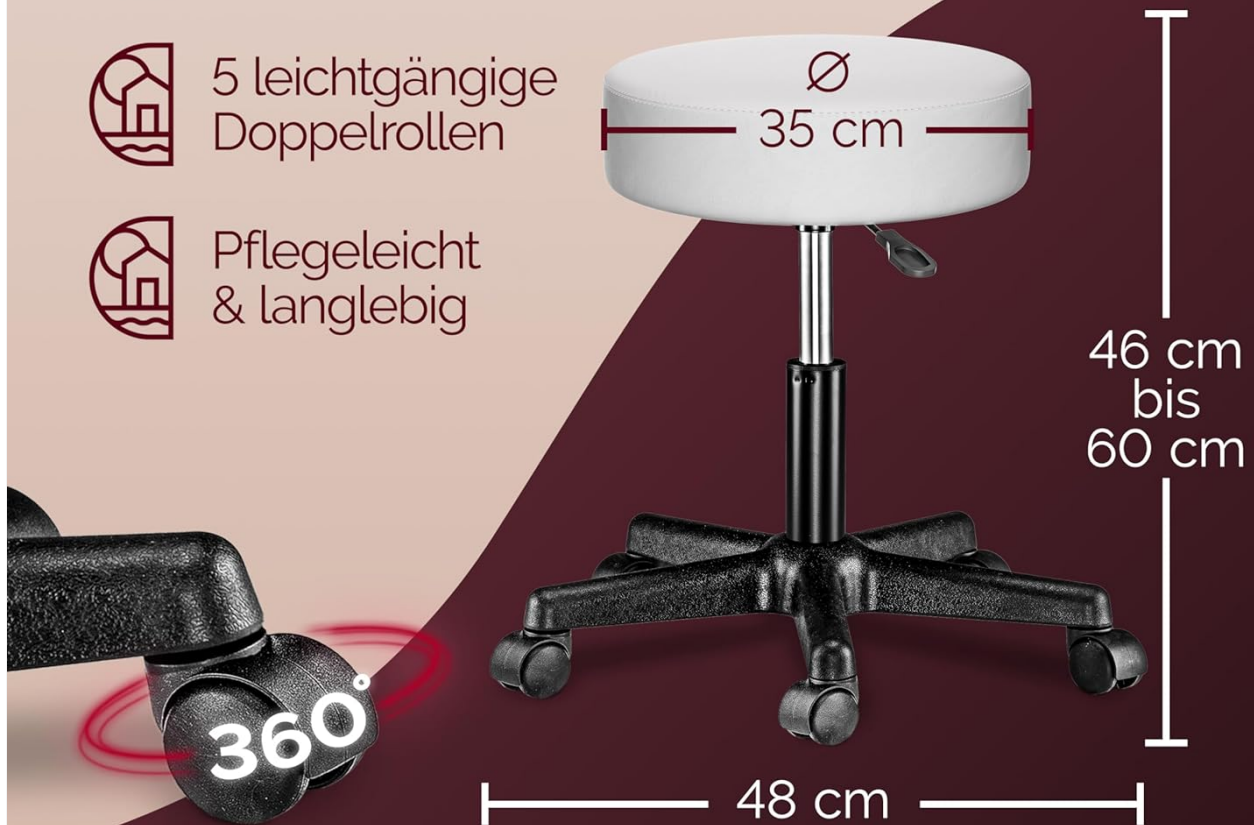


Image 5.2: Features of the rolling stool, highlighting its adjustable height and mobility.

5.3. Storage and Organization

The dressing table provides various storage options:

- **Side Shelves:** Four open shelves next to the mirror are ideal for displaying frequently used cosmetics, perfumes, or decorative items.
- **Large Drawer:** The spacious drawer features three compartments, perfect for organizing jewelry, makeup, and other accessories.



VIEL PLATZ FÜR BEAUTY!



Praktische
Seitenablagen

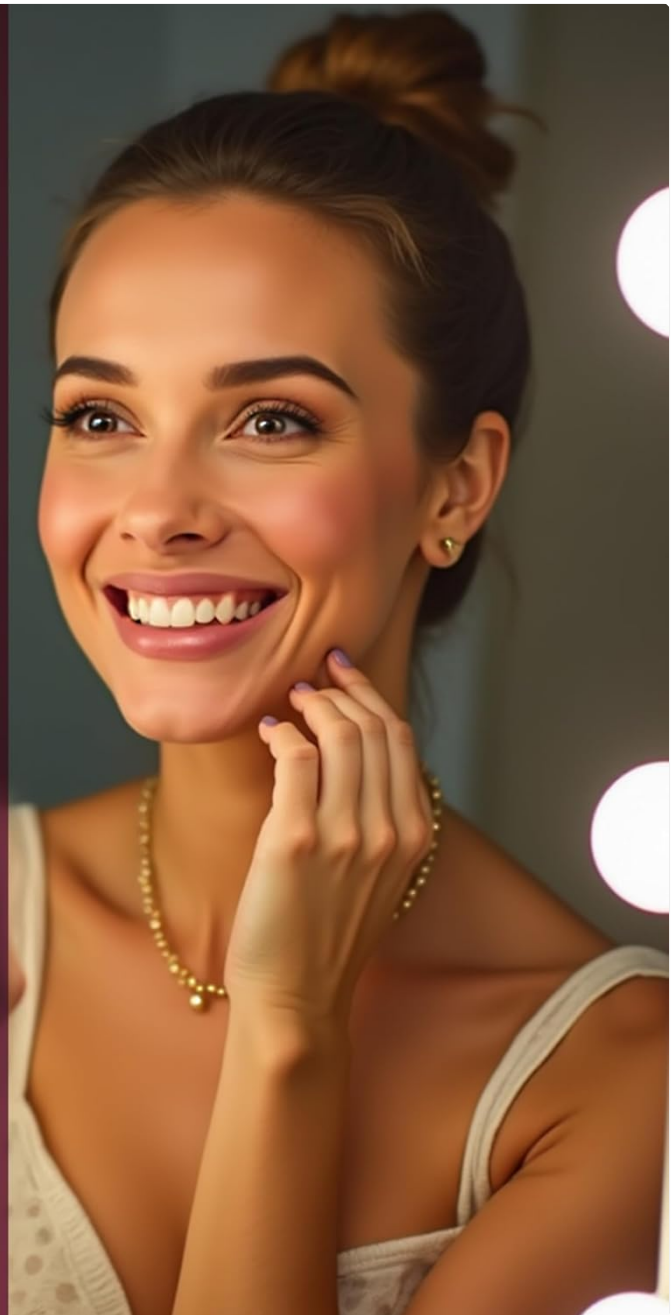


Image 5.3: The practical side shelves offering additional storage and display space.

6. MAINTENANCE

The Casaria Lucia Dressing Table is made from easy-care and robust materials, ensuring long-lasting use with minimal effort.

- **Cleaning Surfaces:** Wipe surfaces with a soft, damp cloth. For stubborn marks, a mild soap solution can be used. Avoid abrasive cleaners or harsh chemicals, as these can damage the melamine resin coating.
- **Mirror Cleaning:** Use a standard glass cleaner and a lint-free cloth for the mirror.
- **Dusting:** Regularly dust all surfaces to prevent buildup.
- **Hardware Check:** Periodically check all screws and fasteners to ensure they remain tight. Re-tighten if necessary to maintain structural integrity.



PFLEGELEICHT & HOCHWERTIG



Mit Melamin-
harzbeschichtung



Kratzfest und
langlebig



Einfache
Reinigung



Image 6.1: The dressing table is made from scratch-resistant and durable melamine resin coated chipboard, making it easy to clean.

7. TROUBLESHOOTING

If you encounter any issues with your Casaria Lucia Dressing Table, please refer to the following common solutions:

- **Drawer Light Not Working:**

- Ensure the drawer is fully closed and then opened again to trigger the distance sensor.
- Check for any obstructions blocking the sensor.
- Verify that any power connections for the light are secure (if applicable, check battery compartment or power adapter).

- **Stool Height Adjustment Issues:**

- Ensure the lever under the seat is fully engaged when attempting to adjust the height.
- Check for any obstructions or debris in the gas lift mechanism.

- **Wobbling Table/Stool:**

- Re-check all assembly screws and tighten any loose connections.
- Ensure the table is placed on a level surface.
- Confirm the wall mounting is securely fastened.

If problems persist, please contact Casaria customer support for further assistance.

8. SPECIFICATIONS

Product Name	Casaria Lucia Dressing Table
Model	Lucia 110x40cm
Dressing Table Dimensions (H x W x D)	140 x 110 x 40 cm (55.12 x 43.31 x 15.75 inches)
Mirror Dimensions (H x W)	64.5 x 57 cm (3 mm thick)
Drawer Dimensions	99.5 x 31.5 x 16 cm
Drawer Compartment Dimensions	30.5 x 28.5 x 9 cm (each)
Shelf Dimensions	24 x 15 cm (each)
Stool Dimensions (W x D x H)	48 x 48 x 46-60 cm
Stool Seat Height	46 - 60 cm (adjustable)
Stool Seat Diameter	35 cm
Material	Chipboard (melamine resin coated)
Color	White

9. WARRANTY AND SUPPORT

Specific warranty information for the Casaria Lucia Dressing Table is not provided in this manual. For details regarding warranty coverage, terms, and conditions, please refer to the product packaging, your purchase receipt, or contact Casaria customer support directly.

For technical support, missing parts, or any other inquiries, please reach out to the manufacturer or retailer from whom you purchased the product. Have your model number (Lucia 110x40cm) and purchase date ready when contacting support.