

## VOCOO B0DLKLSSDX

# VOCOO Digital Indoor Thermometer Humidity Monitor User Manual

Model: B0DLKLSSDX

## INTRODUCTION

---

This manual provides detailed instructions for the setup, operation, and maintenance of your VOCOO Digital Indoor Thermometer Humidity Monitor. Please read this manual thoroughly before using the device to ensure proper function and longevity.



Image: The main VOCOO Digital Indoor Thermometer with a large display showing temperature, humidity, time, and date, alongside a smaller, compact version of the thermometer.

## PRODUCT FEATURES

The VOCOO Digital Indoor Thermometer Humidity Monitor is designed to provide accurate environmental readings for your indoor spaces. Key features include:

- **Home-Use Accuracy & Fast Refresh:** Provides precise temperature and humidity readings with quick updates.
- **Clear LCD Display:** Large, easy-to-read display for all essential information.
- **Air Comfort Indicator:** Visually indicates current air comfort levels (Dry, Comfort, Wet).
- **Easy Calibration:** Designed for straightforward calibration to maintain accuracy.
- **Date & Clock:** Integrated clock and calendar functions for added utility.

# 5.8" Extra Large Display Indoor Thermometer



Image: A family in a living room setting, with the VOCOO thermometer prominently displayed. Icons around the image highlight features such as Clear Display, Max/Min Record, Calendar & Clock, Comfort Indicator, 15s Backlight, Two Power Ways, F/C Switch, and Brightness Adjustable.

## WHAT'S IN THE BOX

Upon opening the package, please verify that all components are present:

- Two Thermometers (one large, one small)
- LCD Screen (integrated into the thermometers)
- Battery (Note: Batteries are not included for the main unit, but may be pre-installed or included for the smaller unit)

depending on the specific model variant.)

- Mounting Hardware (if applicable for wall mounting)

## SETUP

---

### 1. Powering On

The main unit can be powered by either batteries or a USB power source (not included). The smaller unit typically uses button cell batteries.

1. **Battery Installation:** Locate the battery compartment on the back of the device. Insert the required batteries (e.g., AAA for the large unit, CR2032 for the small unit) ensuring correct polarity (+/-).
2. **USB Power (Large Unit):** Connect a compatible USB cable (not included) to the device's USB port and plug the other end into a USB power adapter or port.

### 2. Placement

For accurate readings, place the thermometer in a central location away from direct sunlight, drafts, or heat sources.





Image: The VOCOO thermometer displayed in two common placements: standing on a nightstand using its durable stand, and hanging on a wall using its integrated hanging hole.

- **Using the Stand:** Extend the integrated stand on the back of the device to place it on a flat surface.
- **Wall Mounting:** Use the hanging hole on the back of the device with appropriate mounting hardware (e.g., a small nail or screw) to secure it to a wall.



Image: A central image of the VOCOO thermometer surrounded by smaller images depicting its use in various environments such as an office, bedroom, kitchen, greenhouse, wine cellar, and baby room, illustrating its versatility.

## OPERATING INSTRUCTIONS

### 1. Reading the Display

The large LCD screen provides clear, segmented information:



# Easy to Read Large Display

5.8" large display shows very clear information



Baby Room



Kitchen



Living Room



Garage



Office

Image: A close-up view of the VOCOO thermometer's 5.8-inch large display, showing clear temperature, humidity, time, and date readings, along with the comfort indicator.

- **Temperature:** Displays in large digits, typically in Fahrenheit (°F) or Celsius (°C).
- **Humidity:** Displays as a percentage (%).
- **Time & Date:** Shows the current time and date.
- **MAX/MIN Records:** Displays the highest and lowest temperature/humidity recorded over a 24-hour period.
- **Comfort Indicator:** A visual gauge indicating the comfort level.

## 2. Switching Temperature Units (°F/°C)

Locate the °F/°C button on the back or side of the device. Press it once to toggle between Fahrenheit and Celsius.

### **3. Setting Time and Date**

Refer to the specific buttons on your device (e.g., "SET", "MODE", "ADJ"). Typically, you will press a "SET" or "MODE" button to enter time/date setting mode, then use "UP" or "DOWN" buttons to adjust values, and "SET" or "MODE" again to confirm and move to the next setting.

### **4. Backlight Function (Large Unit)**

The large unit features a 15-second soft backlight for easy reading in low-light conditions. This function is designed to be power-saving.



# 15s Soft Backlight



## Low Battery Icon

Remind you to change batteries



## 15 Seconds Backlight

Easy to read in dark

## Power Saving Mode

Completely invisible so will not influence your sleep

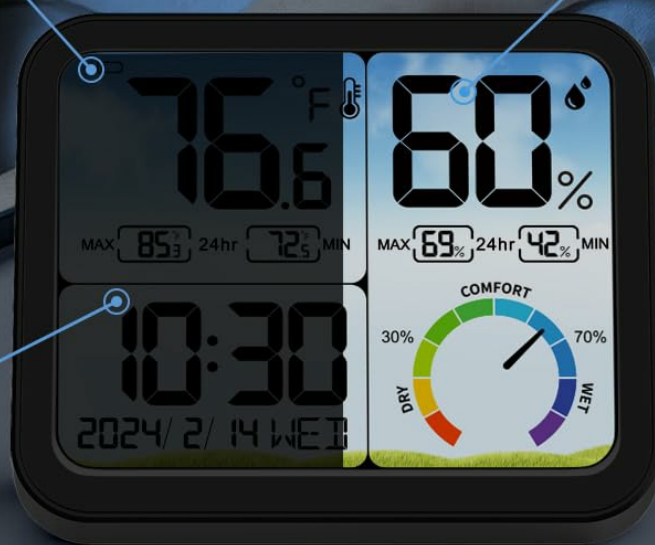


Image: The VOCOO thermometer displaying its 15-second soft backlight feature for visibility in the dark, along with an icon indicating a low battery reminder.

## 5. Low Battery Indicator


A low battery icon will appear on the display when the battery power is running low. Replace batteries promptly to ensure continuous accurate readings.


## AIR COMFORT INDICATOR

The Air Comfort Indicator provides a quick visual reference for the indoor environment's humidity level, which is crucial for health and comfort.

# Actual Air Comfort Indicator


Focus on Temperature and Humidity for Health Care






Humidity < 30%

DRY




30% ≤ Humidity < 69%

COMFORT




Humidity > 70%


WET




Headache



Arthritis



Cold



Dryness

NOTE: The arrow would move according to the humidity so you could keep an eye on your living environment easily.

Image: The VOCOO thermometer showing its comfort indicator, which categorizes humidity levels into "DRY" (less than 30%), "COMFORT" (30% to 69%), and "WET" (greater than 70%). The image also illustrates potential health impacts of improper humidity levels like headache, arthritis, cold, and dryness.

Humidity Comfort Levels

Indicator	Humidity Range	Description
DRY	< 30% RH	Air is too dry, potentially causing skin dryness, respiratory issues, or static electricity.
COMFORT	30% - 69% RH	Optimal humidity level for human comfort and health, and for preserving household items.
WET	> 70% RH	Air is too humid, which can lead to mold growth, discomfort, and damage to electronics or furniture.

SPECIFICATIONS

Technical details for the VOCOO Digital Indoor Thermometer Humidity Monitor:

- **Temperature Range:** -14.2°F to 140°F (-9.9°C to 60°C)
- **Temperature Accuracy:**  $\pm 1^{\circ}\text{C}$  (at 0°C-40°C),  $\pm 2^{\circ}\text{C}$  (at 40°C-60°C)
- **Humidity Range:** 10% - 95% RH
- **Humidity Accuracy:** 5% RH
- **Power Source:** Battery Powered (specific battery type may vary by unit size)
- **Special Features:** Air Comfort Indicator, Clock
- **Connectivity Technology:** Wired (for power, if applicable)
- **Sensor Technology:** Capacitive or Thermistor

## Accurate Sensor

Ensure quick response with high accuracy

Temp Range: -14.2°F~140°F(-9.9°C~60°C)

Temp Accuracy:  $\pm 1^{\circ}\text{C}$  (at 0°C-40°C)  
 $\pm 2^{\circ}\text{C}$  (at 40°C-60°C)

Humidity Range: 10%-95%RH

Humidity Accuracy: 5%RH



Image: An exploded view diagram illustrating the internal components of the VOCOO thermometer, including the sensor, circuit board, and LCD screen, emphasizing its accurate sensor technology.



To ensure the longevity and accuracy of your device, follow these maintenance guidelines:

- **Cleaning:** Wipe the device with a soft, dry cloth. Do not use abrasive cleaners or immerse the device in water.
- **Battery Replacement:** Replace batteries promptly when the low battery indicator appears. Remove batteries if the device will not be used for an extended period to prevent leakage.
- **Storage:** Store the device in a cool, dry place away from extreme temperatures and direct sunlight.

## TROUBLESHOOTING

### Common Issues and Solutions

Problem	Possible Cause	Solution
No display or dim display	Low or dead batteries; incorrect battery installation; no power via USB.	Replace batteries with new ones, ensuring correct polarity. Check USB connection if applicable.
Inaccurate readings	Device placed near heat/cold sources or drafts; sensor obstruction; need for calibration.	Relocate the device to a central, stable environment. Ensure sensor is clear. Refer to calibration instructions if available (not detailed in product info).
Time/Date incorrect	Not set or reset after power loss.	Follow the "Setting Time and Date" instructions in the Operating section.

## WARRANTY AND SUPPORT

VOCOO products are manufactured with quality and reliability in mind. For warranty information and customer support, please refer to the documentation included with your purchase or visit the official VOCOO website. You may also contact the seller directly through your purchase platform for assistance.

**Manufacturer:** VOCOO