

Monster Monster N-Lite 208

# Monster N-Lite 208 Wireless Earbuds User Manual

Model: N-Lite 208 | Brand: Monster

## 1. PRODUCT OVERVIEW

The Monster N-Lite 208 Wireless Earbuds are designed to provide a high-quality audio experience with advanced Bluetooth 5.4 technology, comfortable fit, and intuitive touch controls. This manual provides essential information for setting up, operating, maintaining, and troubleshooting your earbuds.



Image: Monster N-Lite 208 Wireless Earbuds and their charging case. The earbuds are black with the Monster logo, and the case is a sleek black oval shape.



Image: The Monster N-Lite 208 earbuds resting in their open charging case, set against a serene landscape background, highlighting their design.

## 2. SETUP GUIDE

### 2.1 Initial Charging

Before first use, fully charge the earbuds and the charging case. Connect the provided Type-C USB cable to the charging port on the case and a power source. The charging case takes approximately 1.5 hours for a full charge.

# 30 Hours Playing Time



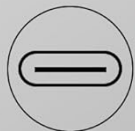
**5 Hrs**



**25 Hrs**



**1.5 Hrs**  
Charging Time



**Type-C**  
Fast Charging



Image: A diagram illustrating the charging process for the Monster N-Lite 208 earbuds and case, showing 5 hours of playtime from earbuds, 25 hours from the case, and 1.5 hours charging time via Type-C.

## 2.2 Pairing with Your Device

1. Ensure the charging case has sufficient power.
2. Open the charging case. The earbuds will automatically enter pairing mode.
3. On your device (smartphone, tablet, etc.), enable Bluetooth.
4. Search for "Monster N-Lite 208" in the list of available Bluetooth devices and select it to connect.
5. Once connected, you will hear a confirmation tone, and the earbuds will be ready for use.

The earbuds utilize advanced Bluetooth 5.4 technology for a stable and low-latency connection.

# Bluetooth 5.4 Stable Connection



Strong  
Signal



One Step  
Pairing



Wide  
Compatibility



Image: A visual representation of the Monster N-Lite 208 earbuds connecting to a smartphone via Bluetooth 5.4, emphasizing strong signal, one-step pairing, and wide compatibility.

## 2.3 Wearing the Earbuds

For optimal sound quality and comfort, ensure the earbuds are correctly positioned in your ears.

### Correctly Wear Bluetooth Headphones

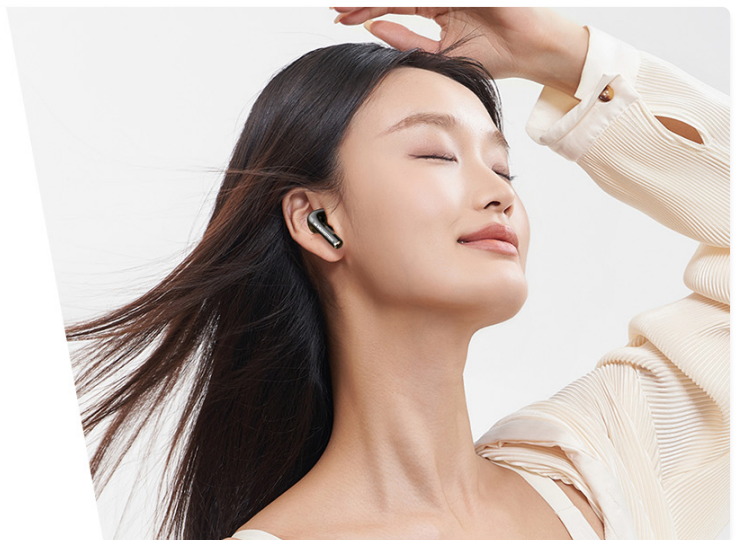
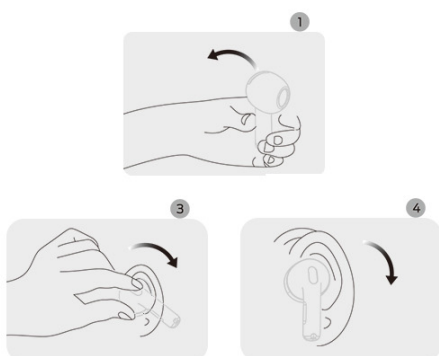


Image: A four-step visual guide demonstrating how to correctly wear the Monster N-Lite 208 Bluetooth headphones for a secure and comfortable fit.

### 3. OPERATING INSTRUCTIONS

#### 3.1 Touch Controls

The Monster N-Lite 208 earbuds feature intuitive touch controls on each earbud for easy management of music playback, calls, and voice assistant activation.



Image: A diagram illustrating the smart touch control functions of the Monster N-Lite 208 earbuds, showing controls for volume, track navigation, call management, and voice assistant.



Image: A detailed diagram of the Monster N-Lite 208 earbuds' touch control area, specifying actions like double click (Play/Pause, Answer/Hang up), 2s press (Voice Assistant), triple click (Previous/Next Track), and slide (Volume +/-).

- **Play/Pause:** Double click either the Right (R) or Left (L) earbud.
- **Volume Up:** Slide up on either R/L earbud.
- **Volume Down:** Slide down on either R/L earbud.
- **Next Track:** Triple click the Right (R) earbud.
- **Previous Track:** Triple click the Left (L) earbud.
- **Answer Call:** Double click either R/L earbud.
- **Hang Up Call:** Press and hold either R/L earbud for 2 seconds.
- **Voice Assistant:** Press and hold either R/L earbud for 2 seconds (when not on a call).

### 3.2 Call Management

The built-in microphones ensure crystal clear calls, allowing for hands-free conversations without ambient distractions.



# Crystal Clear Calls



Image: A person smiling while using the Monster N-Lite 208 earbuds to make a call, demonstrating the clear call quality.

## 3.3 Battery Life and Charging

The earbuds provide up to 5 hours of music playback on a single charge. The charging case extends the total playtime to up to 30 hours. Always place the earbuds back into the charging case when not in use to ensure they are charged and protected.



**Endless Tunes, 30 Hours Freedom**

**5 Hrs**  
Single Charge

**25 Hrs**  
With Charging Case



Image: A graphic detailing the battery life of the Monster N-Lite 208 earbuds: 5 hours on a single charge, 25 additional hours with the charging case, and 1.5 hours charging time.

## 4. MAINTENANCE AND CARE

Proper maintenance ensures the longevity and optimal performance of your Monster N-Lite 208 earbuds.

### 4.1 Cleaning

- Regularly clean the earbuds, especially the ear tips and charging contacts, with a soft, dry, lint-free cloth.
- Do not use abrasive cleaners, alcohol, or chemical sprays.
- Ensure no moisture enters the openings.

### 4.2 Storage

- Always store the earbuds in their charging case when not in use to protect them from dust, damage, and to keep them charged.
- Store in a cool, dry place away from extreme temperatures.

# Easily Carry Everywhere



Image: A hand placing the compact Monster N-Lite 208 charging case into a bag, illustrating its portability and ease of carrying.

## 5. TROUBLESHOOTING

If you encounter issues with your Monster N-Lite 208 earbuds, refer to the following common solutions:

Problem	Possible Cause	Solution
Earbuds not pairing	Earbuds not in pairing mode, Bluetooth off on device, out of range.	Ensure earbuds are in case and open lid to activate pairing. Turn on Bluetooth on your device. Move device closer to earbuds. Forget device in Bluetooth settings and re-pair.

Problem	Possible Cause	Solution
No sound or low volume	Volume too low, earbuds not properly seated, dirty ear tips, connection issue.	Increase volume on both earbuds and connected device. Adjust earbuds for a secure fit. Clean ear tips. Reconnect earbuds to your device.
Earbuds not charging	Charging cable faulty, charging contacts dirty, case battery low.	Try a different Type-C cable and power adapter. Clean the charging contacts on both earbuds and case. Ensure the charging case itself is charged.
Intermittent connection	Interference, distance from device, low battery.	Move closer to your device. Avoid areas with strong Wi-Fi or other Bluetooth signals. Ensure earbuds and case are fully charged.

5.1 Factory Reset (General Guidance)

If issues persist, a factory reset may resolve them. Consult the official Monster support website or contact customer service for specific reset instructions for the N-Lite 208 model, as reset procedures can vary.

6. SPECIFICATIONS

Feature	Detail
Model Name	Monster N-Lite 208
Connectivity Technology	Wireless (Bluetooth)
Bluetooth Version	5.4
Audio Driver Type	Dynamic Driver (13mm)
Control Method	Touch
Ear Placement	In Ear
Item Weight	5 Grams (each earbud) / 0.176 ounces (total product)
Battery	1 Lithium Ion battery required (included)
Playtime	Up to 5 hours (earbuds), up to 30 hours (with charging case)
Charging Port	USB-C
Included Components	Protective Case, USB-C Cable, User Manual

## What's in the Box

2 X Bluetooth Headphones  
1 X Charging Case  
1 X USB-C Cable  
1 X User Manual



Image: A visual representation of the contents included in the Monster N-Lite 208 package: two Bluetooth headphones, one charging case, one USB-C cable, and one user manual.

## 7. WARRANTY AND SUPPORT

### 7.1 Warranty Information

Monster products typically come with a limited manufacturer's warranty. Please refer to the warranty card included in your product packaging or visit the official Monster website for detailed warranty terms and conditions specific to the N-Lite 208 model.

### 7.2 Customer Support

For technical assistance, troubleshooting beyond this manual, or warranty claims, please contact Monster customer support. You can usually find contact information (phone number, email, or support portal) on the official Monster website:

[Visit Monster Support Website](#)