

[Manuals.plus](#) /

› [FLEXISPOT](#) /

› FLEXISPOT EN1 One-Piece Electric Adjustable Standing Desk Instruction Manual

FLEXISPOT EN1

FLEXISPOT EN1 One-Piece Electric Adjustable Standing Desk Instruction Manual

Model: EN1

1. SAFETY INFORMATION

Always follow the assembly instructions carefully to avoid injury. Do not exceed the maximum weight capacity of 176 pounds to maintain stability and prevent damage.

2. WHAT'S IN THE BOX

The FLEXISPOT EN1 Standing Desk is shipped in two packages: one for the desktop and one for the desk frame. All necessary assembly tools and detailed instructions are included in the package.



Product Dimension

You will receive 2 boxes!



Box 1: Desktop

Box 2: Desk Frame

This image shows the overall dimensions of the desk and clarifies that the product is delivered in two separate packages for the desktop and the frame.

3. SETUP INSTRUCTIONS

The FLEXISPOT EN1 desk is designed for quick and easy assembly. Follow the detailed instructions provided in the user manual included in your package. A detailed sit-stand desk installation video is also available for reference.

Work Fast, Set up Faster

Easy Assembly for Any Home Office



Warranty You Can Trust



This image highlights the simplified assembly process of the FlexiSpot desk, designed for quick and hassle-free setup in any home office environment.

This video provides an inside look at the advanced manufacturing facilities of FLEXISPOT, demonstrating the precision and quality control involved in producing their products.

4. OPERATING INSTRUCTIONS

The FLEXISPOT EN1 desk features smooth electric height adjustment and programmable memory presets for convenience.

- **Height Adjustment:** Use the up and down buttons on the control panel to adjust the desk height between 28.1 inches and 45.7 inches.
- **Memory Presets:** The desk includes 4 memory presets. To save a preferred height, adjust the desk to the

desired level, then press and hold one of the numbered memory buttons (1-4) until the display confirms the setting. To recall a saved height, simply press the corresponding memory button.

- **Anti-Collision System:** The desk is equipped with an anti-collision system that automatically stops and slightly reverses the desk's movement if it encounters an obstacle during adjustment, ensuring safety.

Effortless Height Control

One-Touch Memory Presets



Led Display



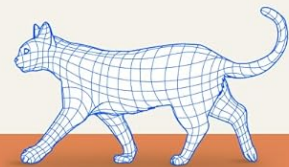
4 Memory Heights



Up/Down



Anti-Collision System



The control panel features an LED display for precise height adjustments, up and down controls, and four programmable memory presets for quick transitions between preferred sitting and standing heights.

5. MAINTENANCE

To ensure the longevity and optimal performance of your FLEXISPOT EN1 desk, follow these maintenance guidelines:

- **Cleaning:** Wipe the desktop and frame with a soft, damp cloth. Avoid abrasive cleaners or harsh chemicals that may damage the finish.
- **Cable Management:** Regularly check and organize cables to prevent tangling and ensure smooth operation of the height adjustment mechanism.
- **Inspection:** Periodically inspect all screws and connections to ensure they are secure. Tighten if necessary.

6. TROUBLESHOOTING

If you encounter any issues with your FLEXISPOT EN1 desk, refer to the following common troubleshooting tips:

- **Desk Not Moving:** Check if the power cord is securely plugged into both the desk and the wall outlet. Ensure no objects are obstructing the desk's movement.
- **Error Code Displayed:** If an error code appears on the control panel, try unplugging the desk from the power source for 10-15 seconds, then plug it back in. This often resets the system.
- **Uneven Movement:** Ensure the desk is placed on a level surface. If the issue persists, consult the detailed manual for calibration instructions.
- **Noise During Operation:** A slight motor sound is normal. If the noise is excessive or unusual, ensure all components are securely fastened.

For further assistance, please contact customer support.

7. SPECIFICATIONS

Feature	Detail
Brand	FLEXISPOT
Model Name	EN1
Product Dimensions	28"D x 55"W x 28"H
Color	White+white
Style	Modern
Base Material	Alloy Steel
Top Material Type	Wood
Finish Type	Powder Coated
Special Feature	55x28" One-Piece Desktop
Minimum Height	28 Inches
Maximum Height	46.7 Inches
Item Weight	80 Pounds
Maximum Weight Recommendation	176 Pounds
Number of Height Positions	4 (Memory Presets)

Lifting Mechanism	Electric
Required Assembly	Yes
Includes All Assembly Tools	Yes

8. WARRANTY INFORMATION

The FLEXISPOT EN1 Standing Desk comes with a Limited Warranty, which includes a comprehensive warranty for parts and labor. Please refer to the warranty card included in your package for specific terms and conditions.

9. CUSTOMER SUPPORT

For any questions, technical assistance, or warranty claims, please contact FLEXISPOT customer support. Contact information can be found in your product manual or on the official FLEXISPOT website.