

[manuals.plus](#) /

› [Away](#) /

› [Away Carry-On Luggage, Lightweight Hardside Suitcase with Spinner Wheels, 22 Inch Airline Approved, TSA Lock, Cloud Gray User Manual](#)

Away 100633LGRYV1

Away Carry-On Luggage User Manual

Model: 100633LGRYV1

1. INTRODUCTION

Welcome to the user manual for your new Away Carry-On Luggage. This manual provides essential information for setting up, operating, maintaining, and troubleshooting your luggage. Please read it thoroughly to ensure optimal use and longevity of your product.

The Away Carry-On is designed with a durable, water-repellent, and lightweight 100% polycarbonate shell, featuring premium 360° smooth-gliding wheels and a quick-release trolley handle. It includes a patented compression pad system and interior organization for efficient packing, and meets carry-on requirements for most major airlines.





Image: Side view of the Away Carry-On Luggage in Cloud Gray, showcasing its hardside shell and extended telescopic handle.

2. KEY FEATURES

- **Lightweight and Durable Shell:** Constructed from 100% polycarbonate for resilience and reduced weight.
- **360° Spinner Wheels:** Four double spinner wheels provide smooth, multi-directional maneuverability.
- **Telescopic Handle:** Quick-release trolley handle with two adjustable height settings for comfortable pulling.
- **TSA-Accepted Combination Lock:** Integrated lock for secure travel, allowing TSA agents to inspect without damage.
- **Patented Compression System:** Interior compression pad and straps to maximize packing space.
- **Interior Organization:** Includes a water-repellent laundry bag and various pockets for organized packing.
- **Underside Grab Handle:** For easy lifting from overhead bins or baggage carousels.



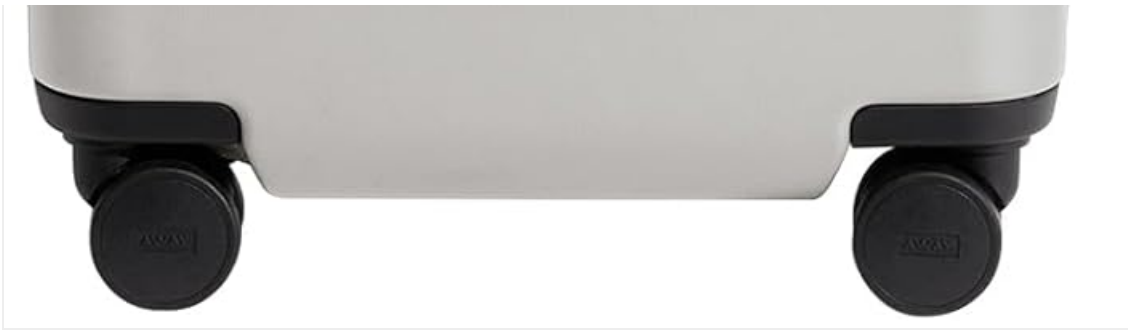


Image: Front view of the Away Carry-On Luggage in Cloud Gray, highlighting its minimalist design.

3. SETUP

3.1 Setting the TSA Combination Lock

Your Away Carry-On comes with an integrated TSA-accepted combination lock. Follow these steps to set your personal combination:

1. Ensure the lock is set to its default combination (usually 0-0-0).
2. Locate the small reset button (often a tiny hole) next to the dials. Use a pen or a pointed object to press and hold this button.
3. While holding the reset button, set your desired 3-digit combination by turning the dials.
4. Release the reset button. Your new combination is now set.
5. Scramble the dials to lock the zippers into place. Remember your combination.

The Carry-On

Pack for 3-5 days



Image: Detailed view of the integrated TSA combination lock, showing the dials and the TSA keyhole.

3.2 Initial Inspection

Before your first trip, inspect your luggage for any signs of damage from shipping. Check the wheels, telescopic handle, zippers, and shell for proper function and integrity.

4. OPERATING INSTRUCTIONS

4.1 Packing Your Luggage

The Away Carry-On is designed for efficient packing for 3-5 day trips. Utilize the internal features to maximize space:

- **Main Compartment:** Place larger, bulkier items on the side without the compression pad.
- **Compression Pad Side:** Lay flatter items or clothes that benefit from compression on this side. Use the adjustable straps and buckles to press down the compression pad, securing your belongings and creating more space.
- **Laundry Bag:** A water-repellent laundry bag is included for separating dirty clothes.

- **Mesh Pockets:** Use the zippered mesh pockets for smaller items, toiletries, or accessories.



Image: Detailed view of the Away Carry-On, showing the patented compression pad system and zippered mesh pockets for organized packing.

4.2 Maneuvering Your Luggage

- **Rolling:** The 360° spinner wheels allow for effortless gliding in any direction. Push the luggage alongside you or pull it behind you.
- **Handle Adjustment:** Extend the telescopic handle by pressing the button on the handle grip and pulling upwards. It locks into two adjustable height settings. Push the button again to retract.
- **Lifting:** Use the top handle for general lifting. For easier lifting from baggage claim or overhead bins, utilize the underside grab handle.

GET A (BETTER) GRIP

Stable, easy-grip trolley handle guarantees a smooth ride and better maneuverability. Made of high-grade aluminum, everything about our luggage is built to last.



Image: A hand demonstrating the use of the underside grab handle for easy lifting of the luggage.

4.3 Airline Compliance

The Away Carry-On (22 Inch) is designed to meet the carry-on requirements for most major airlines. Always check with your specific airline for their latest baggage size and weight restrictions before traveling.



Image: Diagram illustrating the dimensions of the Away Carry-On Luggage (21.7" H x 14.4" W x 9" D).

5. MAINTENANCE

5.1 Cleaning the Exterior

To clean the polycarbonate shell, wipe it down with a soft, damp cloth and mild soap. For scuffs or marks, a magic eraser can be used gently. Avoid abrasive cleaners or solvents.

5.2 Cleaning the Interior

The interior lining can be spot cleaned with a damp cloth and mild detergent. Allow to air dry completely before closing the luggage.

5.3 Wheel and Handle Care

Periodically check the wheels for any debris or hair that might impede smooth rolling. Clean as necessary. Ensure the telescopic handle extends and retracts smoothly. Do not force the handle if it gets stuck.

6. TROUBLESHOOTING

Problem	Possible Cause	Solution
Wheels not rolling smoothly	Debris or hair caught in wheels.	Remove any obstructions from the wheels.
Telescopic handle stuck	Mechanism obstructed or misaligned.	Gently wiggle the handle while pressing the release button. Do not force.
Zippers not closing properly	Fabric caught in zipper, or zipper teeth misaligned.	Clear any obstructions. If teeth are misaligned, gently work the zipper back and forth.
TSA lock not opening	Incorrect combination entered.	Ensure the correct 3-digit combination is entered. If forgotten, refer to the warranty section for support.

7. SPECIFICATIONS

- **Model:** 100633LGRYV1
- **Dimensions:** 14.4 x 9 x 21.7 inches (W x D x H)
- **Weight:** 7.5 pounds
- **Shell Material:** 100% Polycarbonate
- **Wheel Type:** 360° Spinner Wheels
- **Lock Type:** TSA-Accepted Combination Lock
- **Capacity:** Designed for 3-5 day trips
- **Manufacturer:** Away
- **Country of Origin:** Indonesia

8. WARRANTY AND SUPPORT

8.1 Limited Lifetime Warranty

Away suitcases are guaranteed by a limited lifetime warranty that covers any damage to the shell, wheels, handles, zippers, and many other functional elements of our luggage. This warranty does not cover cosmetic damage, misuse, or normal wear and tear.

8.2 Customer Support

For warranty claims, product inquiries, or additional support, please visit the official Away website or contact their customer service team. You can find more information and contact details at the [Away Store on Amazon](#).

9. OFFICIAL PRODUCT VIDEOS

Explore these official product videos from the seller for more insights into your Away Carry-On Luggage:

Away Carry-On Luggage Quick Tour and Review



Video: A quick tour and review of the Away Carry-On Luggage, highlighting its features and design. This video provides a comprehensive overview of the product's functionality and appearance.

Watch Before Buying - Away Carry On Luggage Review



Video: A detailed review of the Away Carry-On Luggage, offering insights and considerations before purchase. This video covers various aspects of the luggage to help potential buyers make an informed decision.

Away Carry-On vs Bigger Carry-On Comparison



Video: A comparative analysis between the standard Away Carry-On and the Bigger Carry-On, highlighting differences in size and features. This comparison assists users in choosing the right luggage size for their travel needs.

Great carry on luggage for air travel, love the quality and ease of use



Video: A user's perspective on the quality and ease of use of the Away Carry-On for air travel. This video emphasizes the practical benefits and positive user experience.

