



Manuals.plus /

› LG /

› LG 24GS50FX-B 24-inch Ultragear Gaming Monitor User Manual

## LG 24GS50FX-B

# LG 24GS50FX-B 24-inch Ultragear Gaming Monitor User Manual

Model: 24GS50FX-B

## 1. INTRODUCTION

---

This manual provides essential information for the safe and efficient use of your LG 24GS50FX-B 24-inch Ultragear Gaming Monitor. Please read it thoroughly before operating the device and retain it for future reference.

The LG 24GS50FX-B is a 24-inch Full HD (1920 x 1080) gaming monitor designed for an immersive gaming experience, featuring a 180Hz refresh rate, 1ms Motion Blur Reduction (MBR), HDR10 support, and AMD FreeSync technology.



*Image 1.1: LG 24GS50FX-B Ultragear Gaming Monitor. This image displays the front view of the monitor with its stand, showcasing a vibrant gaming scene on the screen.*

## 2. SAFETY INFORMATION

---

Observe the following safety precautions to prevent damage to the product or injury to the user:

- Do not place the monitor near heat sources or in direct sunlight.
- Ensure proper ventilation around the monitor.
- Use only the power adapter supplied with the monitor.
- Avoid placing heavy objects on the power cord.
- Do not attempt to disassemble or repair the monitor yourself. Refer all servicing to qualified personnel.
- Keep the monitor away from water or excessive moisture.

## 3. PACKAGE CONTENTS

---

Verify that all items are present in the package:

- LG 24GS50FX-B Monitor Display
- Monitor Stand Base
- Monitor Stand Neck

- Power Adapter
- Power Cord
- DisplayPort Cable
- HDMI Cable (may vary by region)
- User Manual (this document)

## 4. SETUP INSTRUCTIONS

---

### 4.1 Stand Assembly

1. Place the monitor display face down on a soft, clean surface to prevent scratches.
2. Attach the stand neck to the back of the monitor display, ensuring it clicks securely into place.
3. Connect the stand base to the stand neck and tighten the screw at the bottom of the base.

### 4.2 Connecting the Monitor

Connect the monitor to your computer or other devices using the appropriate cables.

- **Power Connection:** Connect the power adapter to the monitor's power input, then plug the power cord into a wall outlet.
- **DisplayPort Connection:** For optimal performance, connect one end of the DisplayPort cable to the monitor's DisplayPort input and the other end to your computer's DisplayPort output.
- **HDMI Connection:** Alternatively, connect one end of an HDMI cable to one of the monitor's HDMI inputs and the other end to your computer's HDMI output.

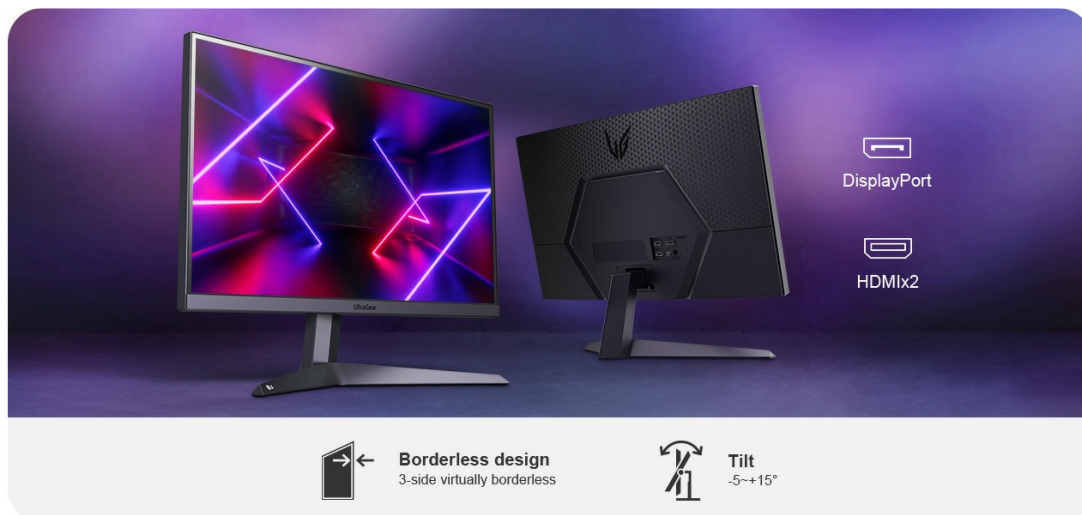


Image 4.1: Rear view of the LG 24GS50FX-B monitor, highlighting the DisplayPort and two HDMI input ports. This image illustrates the available connectivity options for the monitor.

### 4.3 Initial Power On

Press the power button located on the bottom center of the monitor to turn it on. The monitor will automatically detect the active input source.

## 5. OPERATING INSTRUCTIONS

---

### 5.1 On-Screen Display (OSD) Navigation

The monitor features a joystick button located on the bottom center for OSD navigation. Press the joystick button to access the main menu.

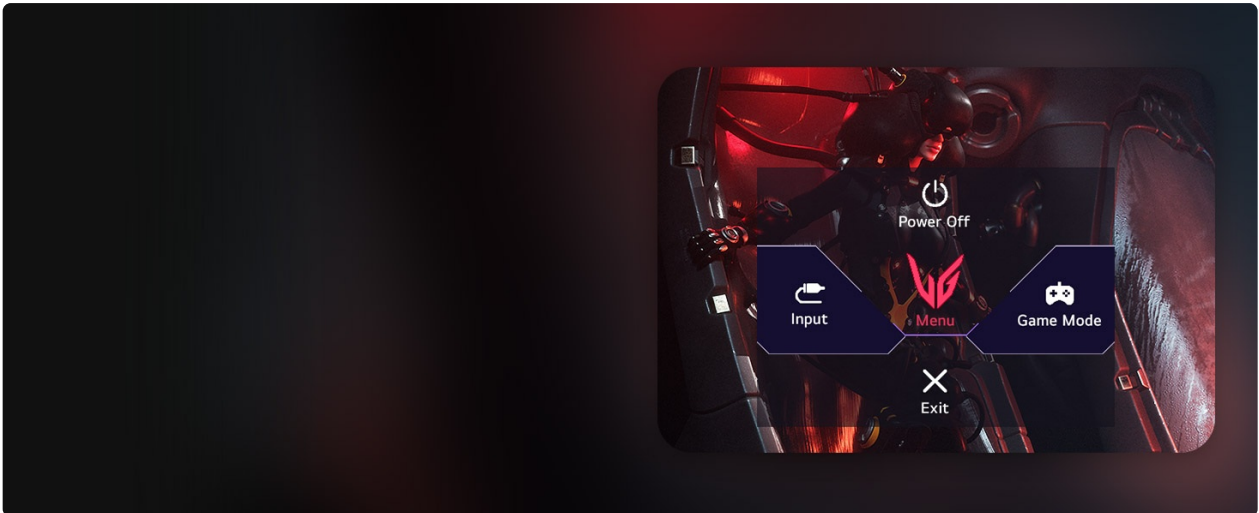


Image 5.1: On-Screen Display (OSD) menu of the LG 24GS50FX-B monitor. This image shows the menu options for Power Off, Input, Menu, Game Mode, and Exit, accessible via the joystick button.

## 5.2 Key Features

- **180Hz Refresh Rate:** Provides smoother motion and reduced input lag for a more fluid gaming experience.



Image 5.2: Visual comparison illustrating the smoothness of a 180Hz refresh rate. The left side shows a blurred image of a car, while the right side shows a clear, sharp image of the same car with a '180Hz' overlay, demonstrating reduced motion blur.

- **1ms Motion Blur Reduction (MBR):** Minimizes motion blur, making fast-paced action clearer.



Image 5.3: Visual representation of 1ms Motion Blur Reduction. The image shows a fighter jet in action, with a highlighted section indicating the clarity achieved with 1ms MBR, reducing blur during fast movements.

- **AMD FreeSync:** Synchronizes the monitor's refresh rate with your GPU's frame rate to eliminate screen tearing and stuttering.

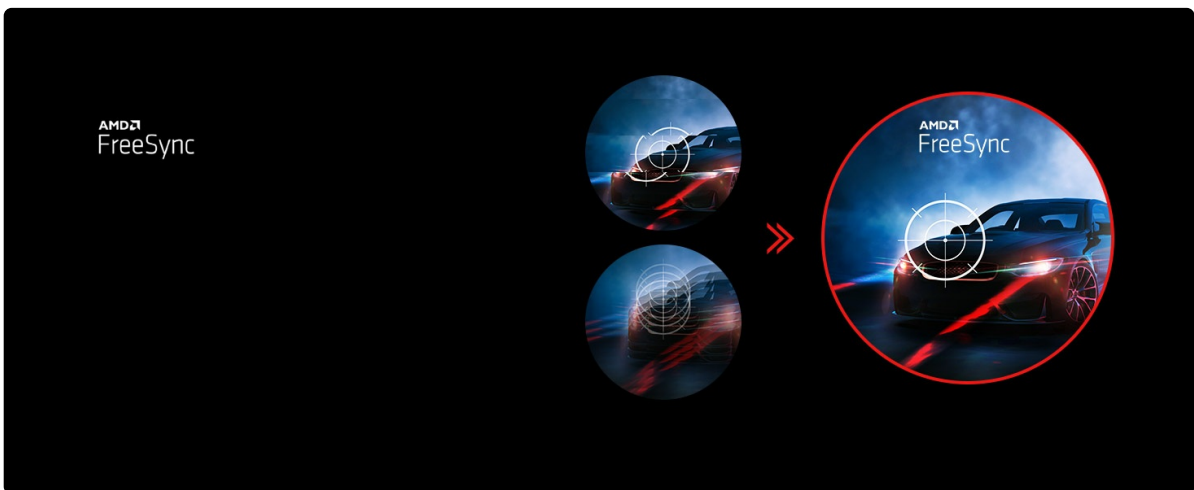


Image 5.4: Diagram illustrating the benefit of AMD FreeSync. The left side shows screen tearing and stuttering in a gaming scene, while the right side shows a smooth, tear-free image of the same scene with the AMD FreeSync logo, indicating synchronized display.

- **HDR10:** Enhances contrast and color accuracy for a more vibrant and realistic visual experience.

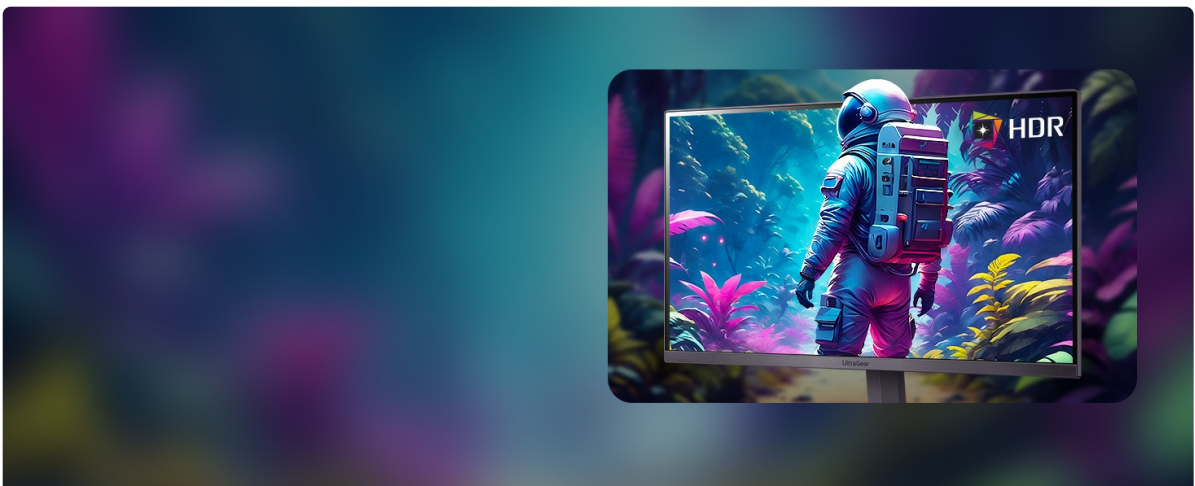


Image 5.5: A monitor displaying a vibrant scene with an astronaut in a colorful alien landscape, with an 'HDR' badge. This image demonstrates the enhanced color and contrast provided by HDR10 technology.

## 5.3 Game Mode Settings

Access the 'Game Mode' option in the OSD to optimize your display for various gaming scenarios. Available settings may include:

- **Black Stabilizer:** Adjusts dark areas to improve visibility in dimly lit game scenes.



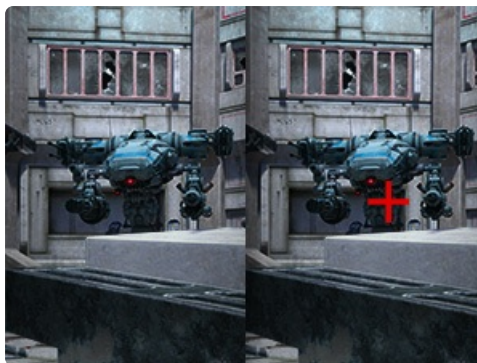
*Image 5.6: Comparison showing the effect of Black Stabilizer. The left image shows a dark, obscured figure, while the right image shows the same figure with enhanced visibility in dark areas, making details clearer.*

- **Dynamic Action Sync (DAS):** Reduces input lag for real-time action.



*Image 5.7: Comparison illustrating Dynamic Action Sync. The left image shows a target reticle with a slight delay, while the right image shows the reticle perfectly aligned with the target, indicating reduced input lag.*

- **Crosshair:** Places a fixed crosshair on the center of the screen for improved aiming accuracy in FPS games.



*Image 5.8: Comparison showing the Crosshair feature. The left image shows a game scene without a crosshair, while the right image shows the same scene with a red crosshair overlaid in the center, aiding aiming.*

- **FPS Counter:** Displays the current frames per second on the screen.



Image 5.9: A first-person shooter game scene with an '180' overlay in the top left corner. This image demonstrates the FPS Counter feature, showing the current frame rate.

## 6. MAINTENANCE

- **Cleaning the Screen:** Gently wipe the screen with a soft, lint-free cloth. For stubborn marks, dampen the cloth with a small amount of water or a specialized screen cleaner. Do not spray cleaner directly onto the screen.
- **Cleaning the Casing:** Use a soft, dry cloth to wipe the monitor casing. Avoid abrasive cleaners.
- **Ventilation:** Ensure the ventilation openings on the monitor are not blocked to prevent overheating.

## 7. TROUBLESHOOTING

| Problem                    | Possible Cause   | Solution   |
|----------------------------|--|--|
| No Power                   | Power cord not connected or power outlet not working.  | Check power cord connections. Test the outlet with another device.   |
| No Signal                  | Input cable not connected or incorrect input selected. | Ensure display cable (HDMI/DisplayPort) is securely connected. Use the OSD to select the correct input source. |
| Screen Flickering          | Refresh rate mismatch or faulty cable.                 | Verify display settings on your computer for correct refresh rate (180Hz). Try a different display cable.      |
| Image is Blurred/Distorted | Incorrect resolution or scaling settings.              | Set display resolution to 1920 x 1080. Check graphics card settings for scaling options.                       |

## 8. SPECIFICATIONS

| Feature                | Specification                    |
|------------------------|----------------------------------|
| Model Name             | 24GS50FX-B                       |
| Screen Size            | 23.7 Inches                      |
| Display Resolution     | 1920 x 1080 (FHD)                |
| Max Refresh Rate       | 180Hz                            |
| Response Time          | 1ms MBR                          |
| Panel Type             | VA                               |
| HDR Support            | HDR10                            |
| Adaptive Sync          | AMD FreeSync                     |
| Connectivity           | 1x DisplayPort, 2x HDMI          |
| Aspect Ratio           | 16:9                             |
| Screen Surface         | Anti-glare                       |
| Color                  | Black                            |
| Dimensions (L x W x H) | 19.6 x 54 x 41.4 cm (with stand) |
| Weight                 | 3.55 kg (with stand)             |

## 9. WARRANTY AND SUPPORT

---

For warranty information and technical support, please refer to the warranty card included with your product or visit the official LG website. Keep your purchase receipt as proof of purchase for warranty claims.

For further assistance, contact LG customer service.