

Manuals+

[Q & A](#) | [Deep Search](#) | [Upload](#)

Manuals.plus /

› [MAYBELLINE](#) /

› Maybelline Super Stay Lumi-Matte Foundation User Manual

MAYBELLINE 0041554094718

Maybelline Super Stay Lumi-Matte Foundation User Manual

Model: 0041554094718

1. PRODUCT OVERVIEW

The Maybelline Super Stay Lumi-Matte Foundation is an airy, long-wearing foundation designed for up to 30 hours of comfortable, light-as-air coverage. This formula is infused with amino acids to provide a luminous matte finish, preventing a flat appearance. Its lightweight composition adapts to the skin and offers resistance against sweat, water, and transfer. It is available in 24 shades, features a vegan formula, is non-comedogenic, dermatologically tested for safety, and suitable for all skin types, including sensitive skin.

2. KEY FEATURES

- **Light As Air Feel:** Delivers buildable full coverage that feels lightweight on the skin for all-day wear.
- **Longwear Formula:** Provides up to 30 hours of wear, resisting sweat, water, and transfer.
- **Luminous Matte Finish:** Infused with amino acids for a matte finish with a subtle hint of luminosity.
- **Shade Variety:** Available in 24 shades to blend seamlessly for a natural finish.
- **Skin-Friendly:** Vegan, non-comedogenic, dermatologically tested, and suitable for all skin types.
- **Award-Winning:** 2025 Allure Best of Beauty Winner.

3. SETUP AND PREPARATION

Before applying the Maybelline Super Stay Lumi-Matte Foundation, ensure your skin is clean and well-hydrated. This helps in achieving a smooth application and optimal wear. Shake the foundation bottle well before each use to ensure the formula is properly mixed.

4. OPERATING INSTRUCTIONS (APPLICATION GUIDE)

1. **Dispense Product:** Shake the bottle well. Apply 1-2 pumps of foundation onto the back of your hand or directly onto your preferred applicator.
2. **Apply to Skin:** Dot the foundation onto your face, focusing on areas where coverage is desired.
3. **Blend:** Using a foundation brush, your fingertips, or a beauty sponge, blend the foundation evenly across your skin. Work in small sections to ensure thorough blending.
4. **Build Coverage:** If additional coverage is needed, apply more foundation in thin layers until the desired look is achieved.

5. INGREDIENTS

AQUA / WATER / EAU • DIMETHICONE • ISODODECANE • ALCOHOL DENAT. • TRIMETHYLSILOXYSILICATE • BUTYLENE GLYCOL • PEG-10 DIMETHICONE • PERLITE • SYNTHETIC FLUORPHLOGOPITE • NYLON-12 • ISOPROPYL LAUROYL SARCOSINATE • DIISOPROPYL SEBACATE • HDI/TRIMETHYLOL HEXYLACTONE CROSSPOLYMER • BIS-PEG/PPG-14/14 DIMETHICONE • DISTEARDIMONIUM HECTORITE • MAGNESIUM SULFATE • PHENOXYETHANOL • DISODIUM STEAROYL GLUTAMATE • SILICA Silylate • SILICA • DIPENTAERYTHRITYL TETRAHYDROXYSTEARATE/TETRAISOSTEARATE • HYDROLYZED SOY PROTEIN • PROLINE • PEG/PPG/POLYBUTYLENE GLYCOL-8/5/3 GLYCERIN • TOCOPHEROL • NIACINAMIDE • GLYCERIN • KAOLIN • ALUMINUM HYDROXIDE • GLUTAMIC ACID • TIN OXIDE • PENTYLENE GLYCOL • GLYCERYL ACRYLATE/ACRYLIC ACID COPOLYMER • [+/- MAY CONTAIN: CI 77891 / TITANIUM DIOXIDE • CI 77491, CI 77492, CI 77499 / IRON OXIDES • CI 77007 / ULTRAMARINES • CI 77288 / CHROMIUM OXIDE GREENS]. (F.I.L. N70040530/2).

6. MAINTENANCE

- **Storage:** Store the foundation in a cool, dry place away from direct sunlight to maintain its quality and efficacy.
- **Seal Properly:** Always ensure the cap is tightly closed after each use to prevent the product from drying out or becoming contaminated.
- **Clean Applicators:** Regularly clean any brushes or sponges used for application to prevent bacterial buildup and ensure smooth, hygienic makeup application.

7. TROUBLESHOOTING

- **Issue: Uneven or Patchy Application:** Ensure your skin is thoroughly moisturized and prepped before applying foundation. Blend the product quickly and thoroughly, as it dries down to a matte finish.
- **Issue: Shade Mismatch:** If the foundation shade does not perfectly match your skin tone, consider blending it down your neck or mixing it with a lighter/darker foundation. Refer to Maybelline's official shade finder for guidance.
- **Issue: Not Lasting as Expected:** For maximum wear, ensure your skin is clean and dry before application. Consider using a primer underneath and setting your foundation with a light dusting of powder or a setting spray, especially in oily areas.

8. SPECIFICATIONS

Attribute	Detail
Product Dimensions	1.16 x 1.26 x 4.46 inches
Item Weight	1 ounces
Item Model Number	0041554094718
UPC	041554094718
Manufacturer	Maybelline New York
Item Form	Liquid
Color	120 - Neutral Cool
Skin Type	All, Oily

Recommended Uses	Liquid Foundations
Package Information	Bottle

9. VISUAL GUIDE



Figure 1: Maybelline Super Stay Lumi-Matte Foundation bottle, shade 120 Neutral Cool.



Figure 2: Swatch of shade 120 Neutral Cool, showing its texture and color.

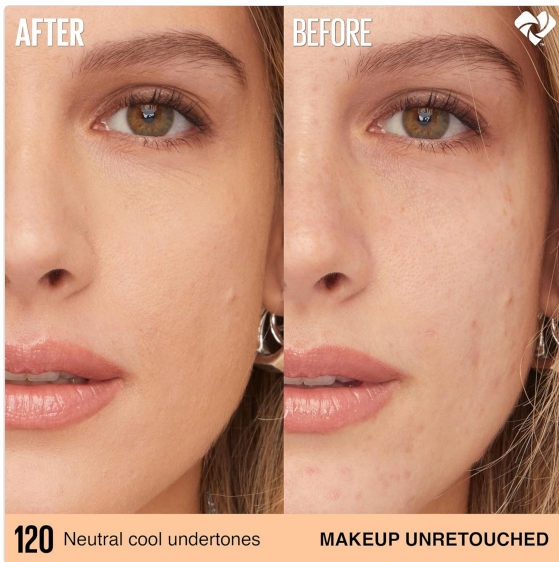


Figure 3: Comparison of skin before and after applying Maybelline Super Stay Lumi-Matte Foundation, shade 120 Neutral Cool.



Figure 4: Multiple shades of Maybelline Super Stay Lumi-Matte Foundation, highlighting its buildable coverage and luminous matte finish.



Figure 5: The foundation bottle emphasizing Air-Flex Technology and amino acid infusion.

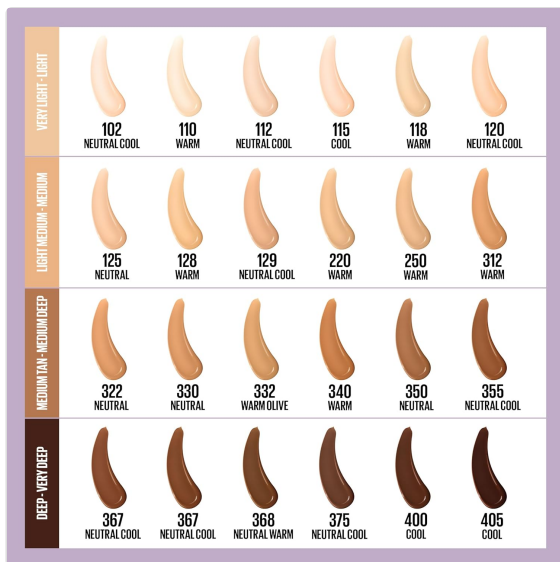


Figure 6: Icons illustrating the foundation's resistance to transfer, heat, sweat, and water.



Figure 7: Shade chart for Light-Very Light skin tones, including shade 120 Neutral Cool.



Figure 8: Shade chart for Medium-Light Medium skin tones.

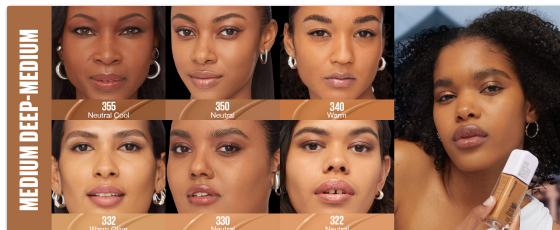


Figure 9: Shade chart for Medium Deep-Medium skin tones.

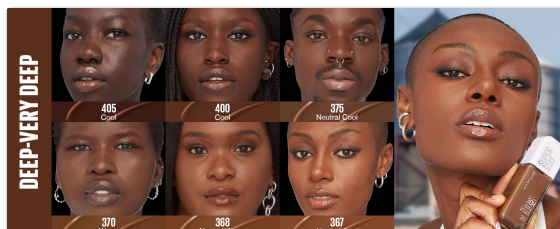


Figure 10: Shade chart for Deep-Very Deep skin tones.

10. WARRANTY AND SUPPORT

For specific warranty information or product support, please refer to the official Maybelline New York website or contact their customer service directly. Keep your purchase receipt for any potential claims.

