

## Manuals+

[Q & A](#) | [Deep Search](#) | [Upload](#)

manuals.plus /

› [Orlushy](#) /

› [Orlushy 500W Submersible Aquarium Heater Instruction Manual](#)

## Orlushy RH500

# Orlushy 500W Submersible Aquarium Heater Instruction Manual

Model: RH500 | Brand: Orlushy

## 1. INTRODUCTION

This manual provides detailed instructions for the safe and effective use of your Orlushy 500W Submersible Aquarium Heater. Please read this manual thoroughly before installation and operation to ensure proper function and the safety of your aquatic environment.

## 2. SAFETY INSTRUCTIONS

- Ensure the heater is **fully submerged** in water before plugging it into a power outlet.
- Always unplug the heater and allow it to cool for 10-20 minutes before removing it from the water.
- The external controller is **not waterproof**. Keep it in a dry location, away from water splashes.
- Do not expose any part of the heater body to air or bury it in sand, as this may cause damage to the unit or lead to accidents.
- Verify that your power supply voltage matches the heater's requirements.
- Keep the device out of reach of children.
- If the power cord or heater shows any signs of damage, discontinue use immediately and contact customer support.
- This heater is designed for indoor aquarium use only.

## 3. PACKAGE CONTENTS

Upon opening your package, please verify that all the following components are included:

- 1 x Orlushy 500W Submersible Aquarium Heater
- 1 x External Digital Temperature Controller
- 1 x Strip Thermometer
- 2 x Suction Cups for Heater Mounting
- 1 x Rubber Crash Protection Case (pre-installed on heater)



An image displaying the Orlushy 500W submersible aquarium heater, its external digital controller, and the included strip thermometer.

#### 4. PRODUCT FEATURES

- **500W Heating Capacity:** Designed for 55-80 gallon freshwater and saltwater aquariums.
- **Compact Design:** Measures 9.8 inches in length for easy placement and concealment within the aquarium.
- **Durable Quartz Glass:** Constructed from thickened gray quartz glass, offering enhanced hardness, high-temperature resistance, and explosion-proof properties.
- **Rapid Heating:** Features uniformly wound nickel-chromium wire for efficient and quick heat dissipation throughout the water.
- **Accurate Water Sensor:** Provides real-time temperature correction to maintain a stable and consistent water temperature.
- **Overheat Protection:** Automatically cuts off power and displays an "EE" error code if the water temperature exceeds 95°F (35°C), protecting aquatic life.

- **External Digital Controller:** Allows safe temperature adjustment from 65°F to 93°F (18°C to 34°C) without submerging hands in water.
- **LED Digital Display:** Clearly shows both the real-time water temperature (PV) and the set temperature (SV).
- **Versatile Use:** Suitable for freshwater tanks, saltwater tanks, betta tanks, and turtle tanks.

## Safe, Durable and Reliable Heater



An image illustrating the Orlushy aquarium heater's suitability for both freshwater and saltwater fish tanks, highlighting its safe and durable construction.

### 5. SETUP INSTRUCTIONS

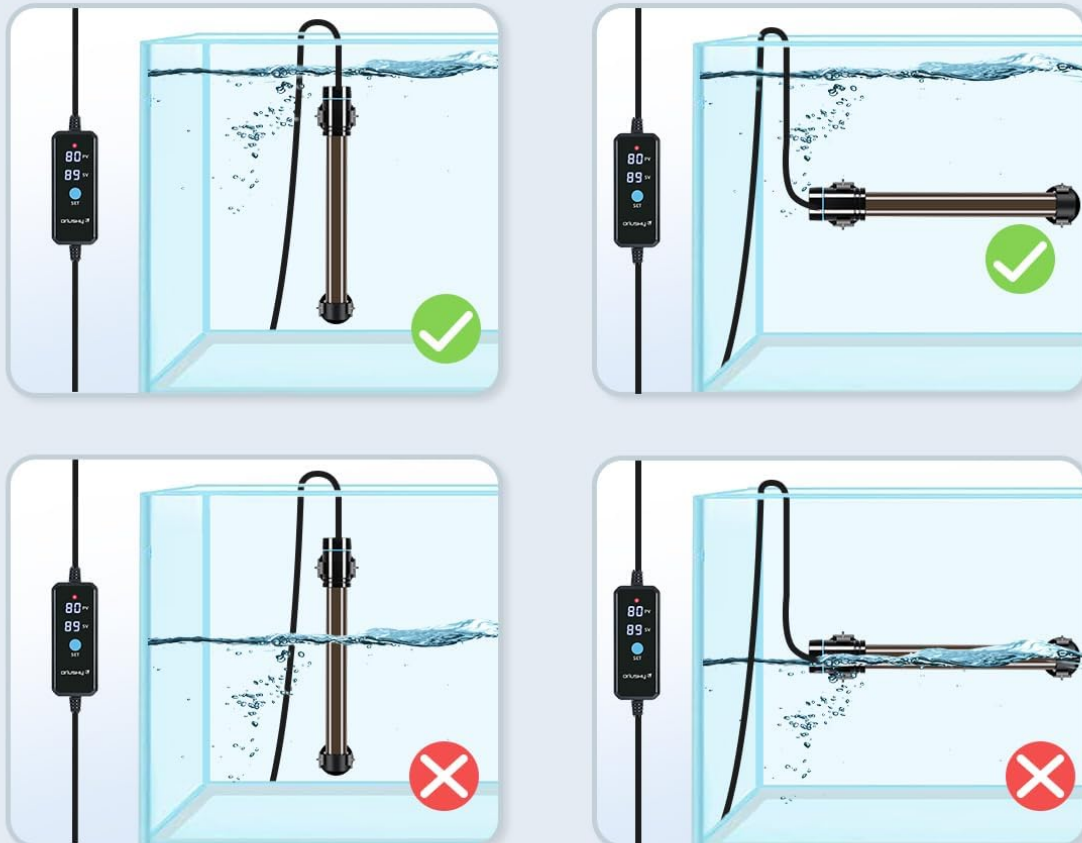
1. **Heater Placement:** Position the heater fully submerged in your aquarium. It can be installed vertically or horizontally using the provided suction cups. Ensure good water circulation around the heater for even heat distribution.
2. **Full Submersion:** The heater must be completely underwater before connecting it to a power source. Operating the heater partially or fully out of water will cause damage.
3. **Controller Placement:** Mount the external controller in a dry location, away from water splashes. The controller is not waterproof.
4. **Power Connection:** Once the heater is properly submerged and the controller is securely placed, plug the

heater into a suitable power outlet.

5. **Initial Temperature Check:** Allow the heater to operate for a few hours. Use the included strip thermometer or another reliable aquarium thermometer to verify the tank's temperature and ensure it matches your desired setting.

## Installation Instruction

1. The heater must be fully submerged in water before plugging it in.
2. Please unplug the heater and cool down for 10-20 minutes before taking it off.
3. The controller is not waterproof. Please keep it away from water.



A diagram illustrating correct and incorrect installation methods for the submersible aquarium heater, emphasizing full submersion and proper orientation.

### Application for Large Tanks

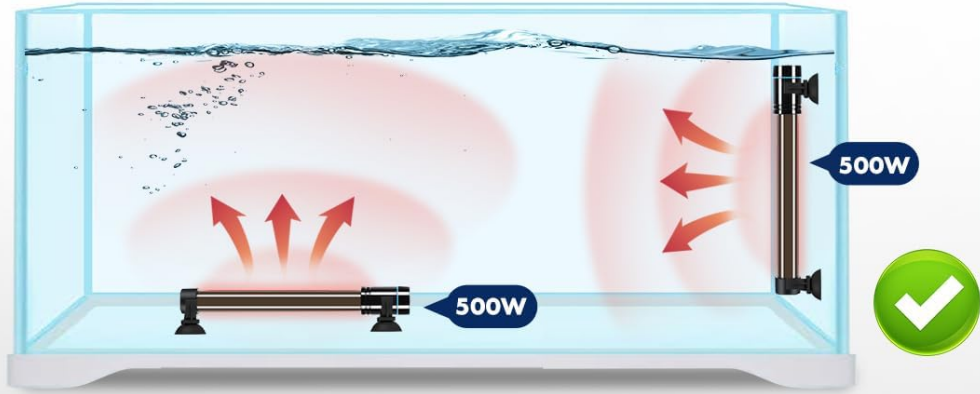
For larger aquariums (150-200 gallons), it is recommended to install two 500W heaters rather than a single 1000W heater. This approach offers:

- More rapid and efficient heating.
- More uniform heat distribution throughout the tank.
- Improved energy efficiency, as the set temperature can be reached faster.
- Enhanced safety: if one heater fails, the other can still provide some heat, preventing a complete temperature drop.

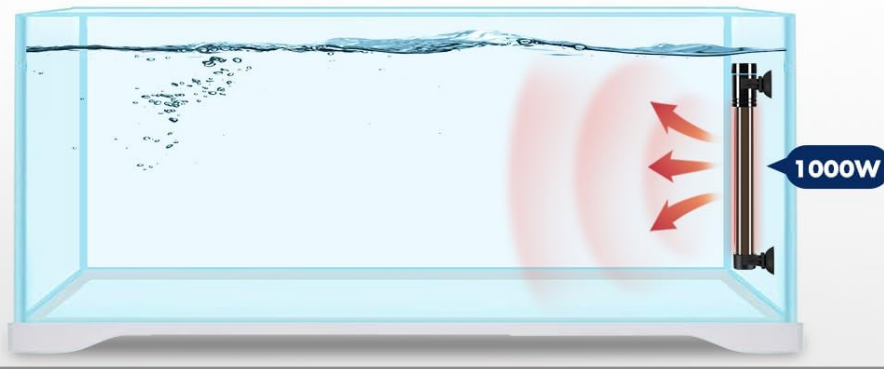
## Better Application of Heater for Large Fish Tank

- **Multiple Smaller Heaters Installation:** 500W heater is for 70 gallons fish tank, and you could install two 500w heaters for 200 gallons fish tank rather than one 800w or 1000w heater.

**You could install two 500w heaters for 150-200 gallons fish tank rather than one 1000w heater.**



**VS**



A diagram comparing the heating efficiency and distribution of multiple smaller heaters versus a single large heater in an aquarium.

## 6. OPERATING INSTRUCTIONS

### 1. Setting Temperature:

Press the "SET" button on the external controller. The set temperature (SV) will flash.

Press the "SET" button repeatedly to adjust the desired temperature. Each press changes the value by 1°F.

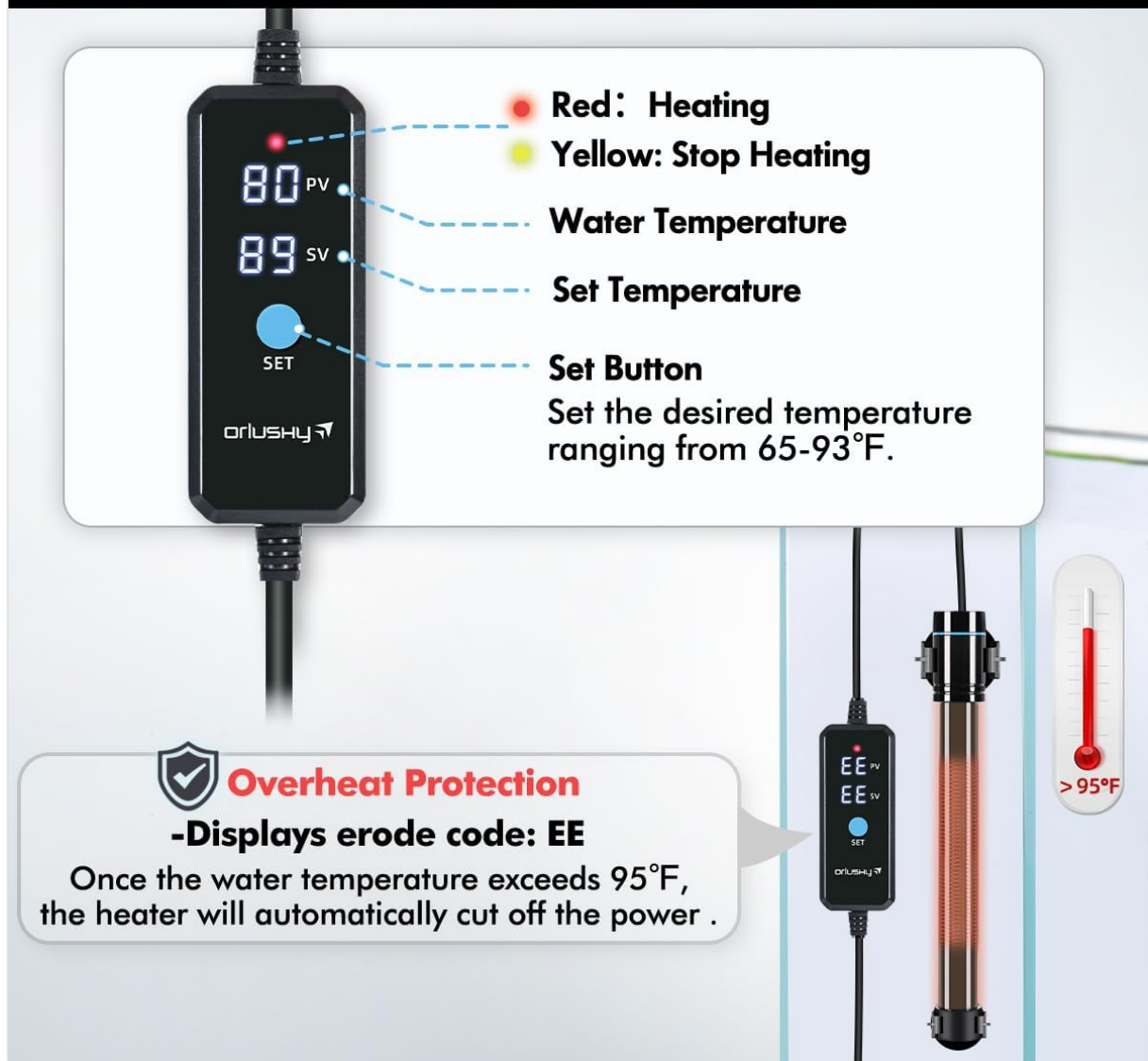
The adjustable range is 65°F to 93°F (18°C to 34°C).

The display will show the current water temperature (PV) and the set temperature (SV).

2. **Heating Indicator:** A red light on the controller indicates the heater is actively heating. A yellow light indicates heating has stopped, and the desired temperature has been reached.

3. **Overheat Protection:** If the water temperature exceeds 95°F (35°C), the heater will automatically power off, and the display will show "EE". This feature protects your aquatic life from dangerously high temperatures.

# External Controller with Digital Display



A detailed image of the external digital controller, labeling the LED indicators (red for heating, yellow for stop heating), water temperature display (PV), set temperature display (SV), and the set button. It also illustrates the "EE" error code for overheat protection.

## 7. MAINTENANCE

- **Regular Cleaning:** Periodically clean the heater surface to prevent algae and mineral buildup, which can reduce heating efficiency. Always unplug the heater and allow it to cool completely before cleaning. Use a soft cloth or brush and aquarium-safe cleaning solutions if necessary.
- **During Water Changes:** Ensure the heater remains fully submerged during water changes. If the water level drops below the heater, unplug it immediately and allow it to cool before refilling the tank to the appropriate level.
- **Controller Care:** Keep the external controller dry and clean. Avoid exposing it to water or high humidity.
- **Inspection:** Regularly inspect the heater unit and its power cord for any signs of damage, cracks, or wear. If any damage is found, discontinue use immediately and contact customer support.

## 8. TROUBLESHOOTING

Problem	Possible Cause	Solution
Heater not heating (no red light)	Not plugged in / Power outage Temperature set too low Water temperature already at or above set temperature	Check power connection. Increase set temperature on controller. This is normal operation. Yellow light indicates heating has stopped.
"EE" error displayed	Water temperature exceeds 95°F (35°C)	Heater has activated overheat protection. Unplug the heater, allow water to cool, and check for external heat sources or heater malfunction.
Inaccurate temperature reading	Sensor issue / Poor water circulation	Ensure heater is placed in an area with good water flow. Use a separate thermometer to verify accuracy.
Heater cracked or damaged	Physical impact / Improper handling	Discontinue use immediately. Unplug and remove carefully. Contact customer support for replacement.

## 9. SPECIFICATIONS

- **Model:** RH500
- **Power:** 500W
- **Temperature Control Range:** 65°F - 93°F (18°C - 34°C)
- **Applicable Tank Size:** 55-80 Gallons
- **Heater Length:** Approximately 9.8 inches
- **Material:** Thickened Gray Quartz Glass
- **Compatibility:** Freshwater and Saltwater Aquariums
- **Overheat Protection:** Automatic shut-off at 95°F (35°C)
- **Power Cord Length:** Approximately 6 feet

# Choose the Right Heater for Your Aquarium



Powerful Suction Cups



Premium Nickel-chromium Wire



Rubber Crash Protection Case



Free Strip Thermometer



500W

Model	Control Range	Applicable Tank Size	Power Cord Length
25W	65~93°F	1~5Gal	6ft
50W		5~10Gal	
100W		10~20Gal	7ft
150W		20~30Gal	
200W		20~40Gal	
300W		40~60Gal	
500W		55~80Gal	

An image displaying a table of different Orlushy heater models, their wattage, control range, applicable tank sizes, and power cord lengths, along with a visual representation of the 500W heater's dimensions.

## 10. WARRANTY AND SUPPORT

The Orlushy 500W Submersible Aquarium Heater comes with a **180-day warranty** for free replacement if any insoluble problem occurs to the heater.

For technical support, warranty claims, or any questions regarding your product, please contact Orlushy customer service through the retailer's platform or the official Orlushy website. Please have your model number (RH500) and purchase date available when contacting support.