

VEVOR 63.4 in Projector Floor Stand (ZG-TBTY)

VEVOR Projector Stand Instruction Manual

Model: 63.4 in Projector Floor Stand (ZG-TBTY)

INTRODUCTION

Thank you for choosing the VEVOR Adjustable Height Projector Stand. This manual provides essential information for the safe and efficient assembly, operation, and maintenance of your new projector stand. Please read these instructions thoroughly before use and retain them for future reference.

The VEVOR projector stand features an adjustable tray and robust load capacity, securely holding both your projector and laptop. This versatile stand is suitable for various environments, enhancing presentations and making them more dynamic.

SAFETY INFORMATION

- Ensure all components are securely fastened before placing any equipment on the stand.
- Do not exceed the maximum load capacity of 8.5 kg (18.7 lbs).
- Place the stand on a stable, level surface to prevent tipping.
- Keep children and pets away from the stand during assembly and operation.
- Avoid sudden movements or impacts to the stand while equipment is in place.
- Regularly check for any loose parts or damage. Do not use if damaged.

PACKAGE CONTENTS

Verify that all the following items are included in your package:

- 1 x Iron Base Foot
- 1 x Base
- 1 x Support Rod
- 2 x Extension Rods
- 1 x Telescopic Rod
- 1 x Adapter
- 2 x Clips
- 1 x Plastic Tray
- 1 x Foam Pad + Strap

- 1 x Ball Head Mount
- 1 x Screwdriver
- 6 x M5*10mm Flat-Head Screws
- 1 x User Manual (this document)

ASSEMBLY INSTRUCTIONS

Follow these steps to assemble your VEVOR Projector Stand:

1. Attach the support rod to the base using the provided screws. Ensure it is firmly secured.
2. Connect the extension rods to the support rod, then attach the telescopic rod.
3. Mount the ball head to the top of the telescopic rod.
4. Attach the plastic tray to the ball head. Secure it with the adapter and clips.
5. Apply the foam pad to the tray surface and use the strap to secure your device.

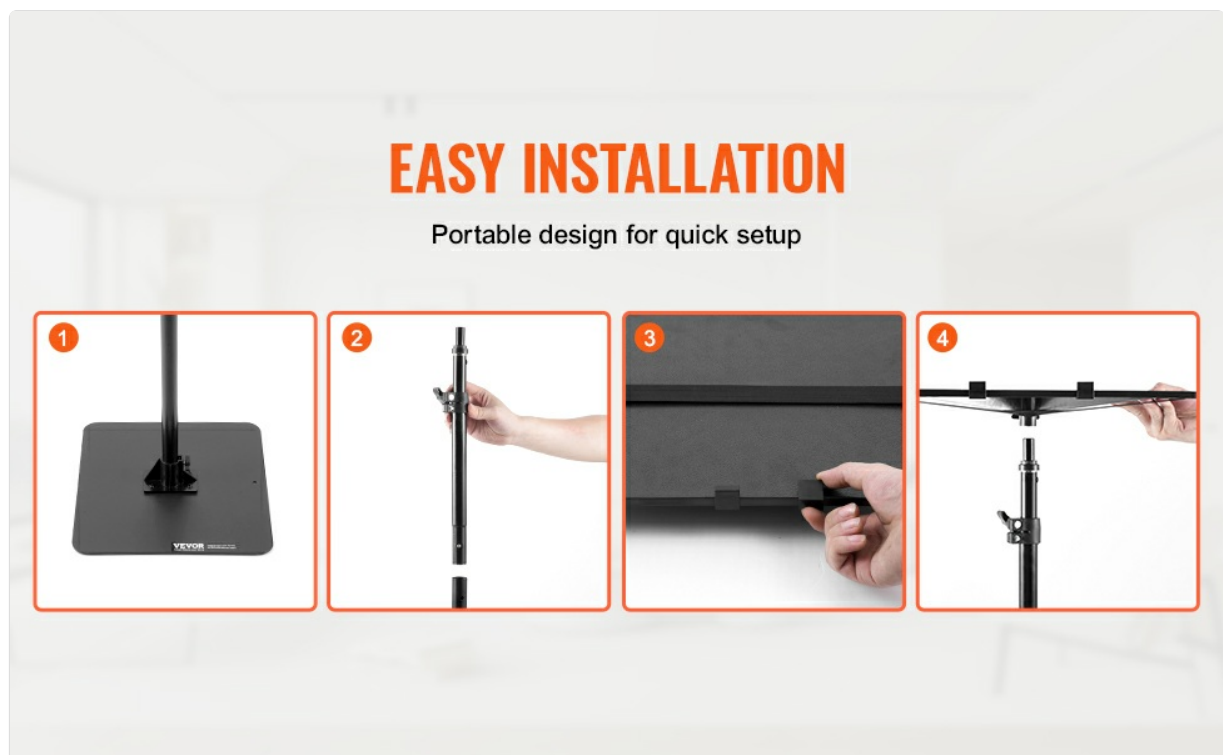


Figure 1: Easy Installation Steps. This image illustrates the four main steps for assembling the VEVOR Projector Stand, from connecting the base to securing the tray.

OPERATION

Adjusting Height

The stand's height is easily adjustable from 77 cm (30.3 inches) to 161 cm (63.4 inches). Loosen the adjustment knob on the telescopic rod, extend or retract the rod to the desired height, and then tighten the knob securely to lock it in place.

Adjusting Tray Angle and Rotation

The tray can be rotated 180 degrees and tilted to achieve the perfect viewing angle. Loosen the ball head mount to adjust the angle, then tighten to secure. The tray also features internal cable management for an organized setup.



Figure 2: Wide Extension Range and 180-degree Rotating Tray. This image demonstrates the adjustable height feature and the tray's ability to rotate for optimal positioning.

Placing Devices

Place your projector, laptop, or other compatible devices on the tray. Use the included foam pad for cushioning and the strap to secure the device, preventing accidental slips. The stand is designed to support various devices for presentations, viewing, or reading.



Figure 3: Multifunctional Design with Secure Device Placement. This image illustrates the stand's capacity to hold devices up to 18.7 lbs and the use of a strap for added security.

MAINTENANCE

- Clean the stand regularly with a soft, dry cloth. Avoid abrasive cleaners or solvents.
- Periodically check all screws and connections to ensure they remain tight.
- Store the stand in a dry place when not in use. Its portable folding design allows for easy storage.

TROUBLESHOOTING

Stand is unstable:

- Ensure the stand is placed on a completely flat and stable surface.
- Verify that all screws, especially those connecting the base and rods, are fully tightened.
- Check that the weight of the device on the tray does not exceed the maximum load capacity of 8.5 kg (18.7 lbs).
- Distribute the weight evenly on the tray.

Height adjustment mechanism is loose:



- Ensure the adjustment knob on the telescopic rod is fully tightened after setting the desired height.

Tray does not hold position:

- Tighten the ball head mount securely after adjusting the tray angle.

SPECIFICATIONS

Model	63.4 in Projector Floor Stand (ZG-TBTY)
Height Range	770-1610 mm / 27.56 - 63.39 inches
Product Weight	3.6 kg / 7.94 lbs
Product Dimensions (L x W x H)	300 x 400 x 1600 mm / 11.81 x 15.75 x 62.99 inches
Weight Capacity	8.5 kg / 18.7 lbs
Tray Material	Acrylonitrile Butadiene Styrene (ABS)
Tray Wall Thickness	3 mm
Main Tray Size	400 x 300 x 8 mm / 15.75 x 11.81 x 0.31 inches
Base Material	Iron Plate
Base Size	300 x 300 mm / 11.81 x 11.81 inches
Base Wall Thickness	4 mm
Color	Black

29.13-62.99"
Adjustable Height

SPECIFICATIONS

Model: ZG-TBTY	Tray Material: ABS
Product Weight: 3.6 kg / 7.94 lbs	Weight Capacity: 8.5 kg / 18.7 lbs
Tray Size: 300 x 400 mm / 11.81 x 15.75 in	Tray Wall Thickness: 3 mm
Base Material: Iron Plate	Base Wall Thickness: 4 mm
Base Size: 300 x 300 mm / 11.81 x 11.81 in	
Product Dimensions: 300 x 400 x 1600 mm / 11.81 x 15.75 x 62.99 in	
Main Tray Size: 400 x 300 x 8 mm / 15.75 x 11.81 x 0.31 in, T=3 mm	

Accessories:

1 x Wireless Remote, 1 x Wired Remote, 1 x User Manual, 1 x Iron Base Foot
1 x Base, 1 x Support Rod, 2 x Extension Rods, 1 x Telescopic Rod
1 x Adapter, 2 x Clips, 1 x Plastic Tray, 1 x Foam Pad + Strap
1 x Ball Head Mount, 6 x M5*10mm Flat-Head Screws, 1 x Screwdriver

We continue to be committed to provide you with cost-effective tools.
 "Save Half" or any other similar expressions used by us only represents an estimate of savings you might benefit from buying certain tools with us compared to the major top brands and does not necessarily mean to cover all categories of tools offered by us.
 You are kindly reminded to verify carefully when you are placing an order with us if you are actually saving half in comparison with the top major brands.

Figure 4: Product Specifications. This image provides a visual summary of the technical specifications for the projector stand.

WARRANTY AND SUPPORT

Information regarding warranty coverage for this product is not explicitly provided. For any support inquiries, missing parts, or technical assistance, please contact VEVOR customer service through their official website or the retailer where the product was purchased.

Availability of spare parts for this product is currently not specified.