



Manuals.plus /

- › SCS Enterprises /
- › SCS Enterprises WF-113 WiFi Camera Outlet Extender User Manual

SCS Enterprises WF-113

SCS Enterprises WF-113 WiFi Camera Outlet Extender User Manual

Model: WF-113

INTRODUCTION

This manual provides detailed instructions for the setup, operation, and maintenance of your SCS Enterprises WF-113 WiFi Camera Hidden in Power Outlet Extender. Please read this manual thoroughly before using the device to ensure proper functionality and safety.

PACKAGE CONTENTS

Verify that all items listed below are included in your package:

- SCS Enterprises WF-113 WiFi Camera Outlet Extender
- Power adapter (for 12VDC models)
- User Manual (this document)

PRODUCT FEATURES

The SCS Enterprises WF-113 offers the following key features:

- **High-Resolution Sensor:** 1/2.8", 2.0MP Ultra low light sensor for enhanced visibility in dim conditions.
- **Infrared Sensitivity:** 940nm IR sensitive with superior glass optics.
- **Continuous Operation:** Direct power for 24/7 operation (not battery powered).
- **Universal Compatibility:** Universal video interface compliant, compatible with NVR and third-party software like iSpyConnect, AnyCam, Blue Iris.
- **Internal Storage:** 32GB internal memory, providing over 200 hours of motion detection recording.

- **Mobile Device Support:** Works with iPhone, iOS, and Android devices.
- **Secure Connection:** Signal secured by User ID, password, and WPA Encryption.
- **No Subscription Fees:** No monthly fees or subscription/registration requirements.
- **Instant Alerts:** Push notification functionality.

SETUP GUIDE

1. Device Overview

Familiarize yourself with the physical components of your WF-113 device.



Figure 1: Front view of the WF-113, displaying the AC outlets and USB charging ports.



Figure 2: Angled view indicating the discreetly placed camera lens and confirming the full functionality of the power outlets.

2. Initial Power-Up

1. Plug the WF-113 into a standard wall outlet. Ensure it is securely seated.
2. The device will power on automatically. Allow a few moments for it to initialize.

3. App Installation

1. Download the official SCS Enterprises application from your mobile device's app store (available for iOS and Android).
2. Install the application and create an account if prompted.

4. Connecting to Wi-Fi

1. Open the SCS Enterprises app on your smartphone or tablet.
2. Follow the in-app instructions to add a new device. This typically involves scanning a QR code on the device or manually entering its ID.
3. Select your home or office Wi-Fi network and enter the password when prompted. Ensure your device is connected to a 2.4GHz Wi-Fi network, as 5GHz networks may not be supported.
4. Once connected, the device status indicator in the app should confirm a successful connection.

OPERATING INSTRUCTIONS

1. Remote Viewing

Access live video feed from your WF-113 camera from anywhere using the mobile application.

- Open the SCS Enterprises app.
- Select your WF-113 device from the list of connected cameras.
- The live 1080p video stream will appear on your screen.



Figure 3: Remote viewing of the 1080p live feed via the mobile application.

2. Recording and Storage

The WF-113 features 32GB of internal memory for recording.

- Recordings are primarily triggered by motion detection.
- To view recorded footage, navigate to the 'Playback' or 'Recordings' section within the app.
- You can import recorded videos directly to your phone's storage.

- Motion detection recording and playback anytime
- Import videos to save onto your phone
- Push notification on motion detection

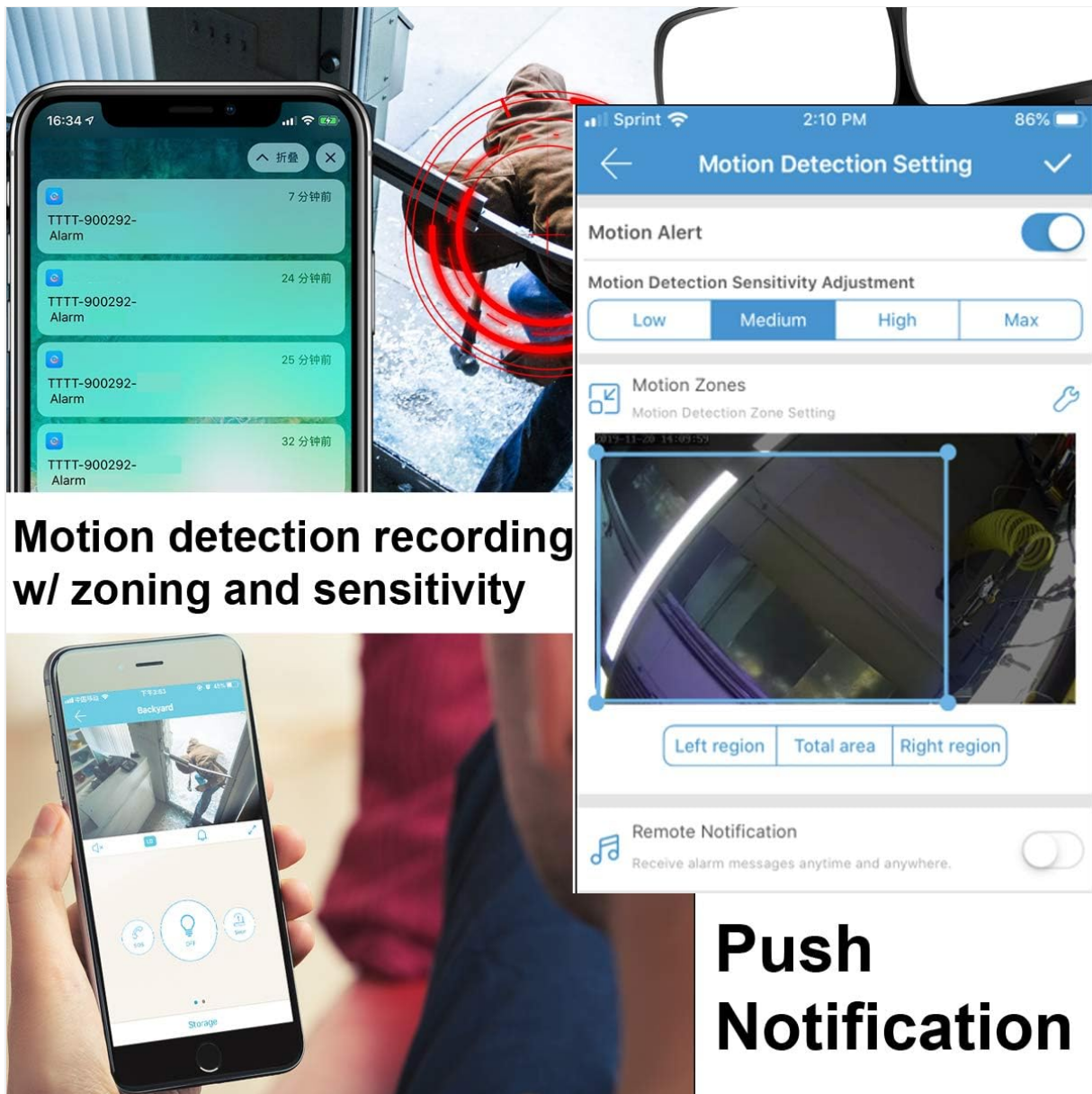


Figure 4: Mobile app interface showing a list of recorded events for playback.

3. Motion Detection and Notifications

Configure motion detection settings and receive instant alerts.

- In the app settings, locate 'Motion Detection Settings'.
- Adjust sensitivity levels (Low, Medium, High, Max) to suit your environment.
- Define specific 'Motion Zones' to monitor particular areas within the camera's field of view.
- Enable 'Push Notifications' to receive alerts on your mobile device when motion is detected.



Motion detection recording w/ zoning and sensitivity

Push Notification

Figure 5: Motion detection settings and push notification configuration within the app.

MAINTENANCE

To ensure optimal performance and longevity of your WF-113 camera:

- **Cleaning:** Gently wipe the device and camera lens with a soft, dry cloth. Avoid using liquid cleaners or abrasive materials.
- **Placement:** Ensure the device is plugged into a stable wall outlet and not subjected to excessive heat, moisture, or direct sunlight.
- **Firmware Updates:** Periodically check the mobile application for available firmware updates to ensure your device has the latest features and security enhancements.

TROUBLESHOOTING

If you encounter issues with your WF-113, refer to the following common problems and solutions:

Problem	Possible Cause / Solution
Device not powering on	Ensure the device is securely plugged into a functional wall outlet. Check if the outlet has power.
Cannot connect to Wi-Fi	Verify your Wi-Fi network is 2.4GHz. Ensure the Wi-Fi password is correct. Move the device closer to the Wi-Fi router. Restart the device and your router.
No live video feed	Check Wi-Fi connection status in the app. Ensure your mobile device has a stable internet connection. Restart the app.
Motion detection not working	Verify motion detection is enabled in the app settings. Adjust sensitivity levels. Ensure motion zones are correctly configured.
Poor video quality	Ensure adequate lighting in the monitored area. Clean the camera lens. Check your internet connection speed.

SPECIFICATIONS

Feature	Detail
Model Name	WF-113
Brand	SCS Enterprises
Connectivity Technology	Wireless (Wi-Fi)
Video Capture Resolution	1080p
Viewing Angle	85 Degrees
Special Feature	940nm IR sensitive
Indoor/Outdoor Usage	Indoor
Compatible Devices	Desktop, Laptop, Smartphone, Tablet
Controller Type	Android, iPhone
Mount Type	Wall Mount
Power Source	Either 12VDC or 110VAC (Never apply 110VAC directly to a 12VDC Model)
Batteries Required	No
Video Capture Format	MJPEG
Item Dimensions	1 x 3.75 x 4.75 inches
Item Weight	0.37 Pounds
Flash Memory Installed Size	32 GB
Flash Memory Supported Size Maximum	32 GB

WARRANTY INFORMATION

For specific warranty details regarding your SCS Enterprises WF-113 device, please refer to the warranty card included with your product or contact SCS Enterprises customer support directly. General warranty terms typically cover manufacturing defects for a specified period from the date of purchase.

CUSTOMER SUPPORT

For any questions, technical assistance, or support, please contact SCS Enterprises customer service. Our 24/7 USA Customer Service team is available by calling or texting the number provided in your product packaging.

Please have your product model (WF-113) and purchase information ready when contacting support.