

manuals.plus /

- › [klarus](#) /
- › [KLARUS XT1C Flashlight User Manual](#)

## klarus XT1C

# KLARUS XT1C Flashlight User Manual

Model: XT1C

## 1. PRODUCT OVERVIEW

The KLARUS XT1C is a compact and powerful tactical flashlight designed for everyday carry (EDC) and various outdoor activities. It features a high-efficiency LED, delivering up to 1000 lumens of bright light, and is built with durable aerospace aluminum alloy.



Image: The compact KLARUS XT1C flashlight, demonstrating its small size when held in a hand.

### Key Features:

- **High Brightness:** Maximum output of 1000 lumens for powerful illumination.
- **Dual Switch Control:** Patented tactical tail cap dual switch for intuitive, one-handed operation, including one-touch strobe and one-touch high.
- **Rechargeable:** Built-in micro USB charging port for convenient battery recharging.
- **Durable Construction:** Aerospace aluminum alloy body with Mil-Spec Hard Anodizing (HAIII) for lightweight and robust performance.
- **Multiple Safety Protections:** Includes thermal isolation system, low battery capacity protection, impact protection, high temperature protection, and reverse polarity protection.
- **Waterproof:** IPX8 waterproof rating, fully submersible down to 2 meters.

## Small Size Massive Power

Newest LED + High Efficiency Drive Circuit

Max Output **1000** Lumens

Upgraded Output Greatly Exceeds Industry Standard

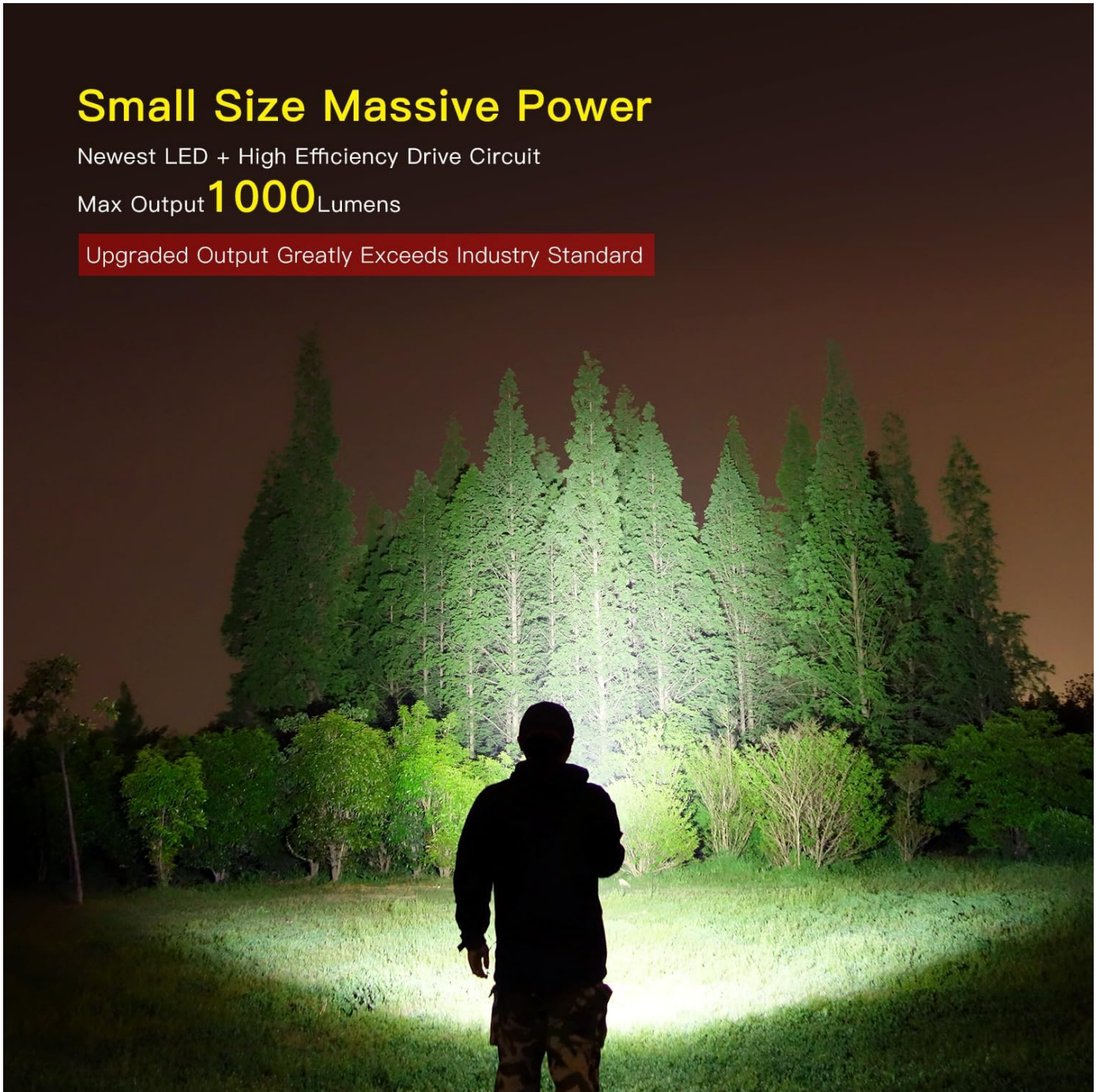


Image: The powerful beam of the XT1C flashlight illuminating a wide area in a forest at night, demonstrating its 1000-lumen output.



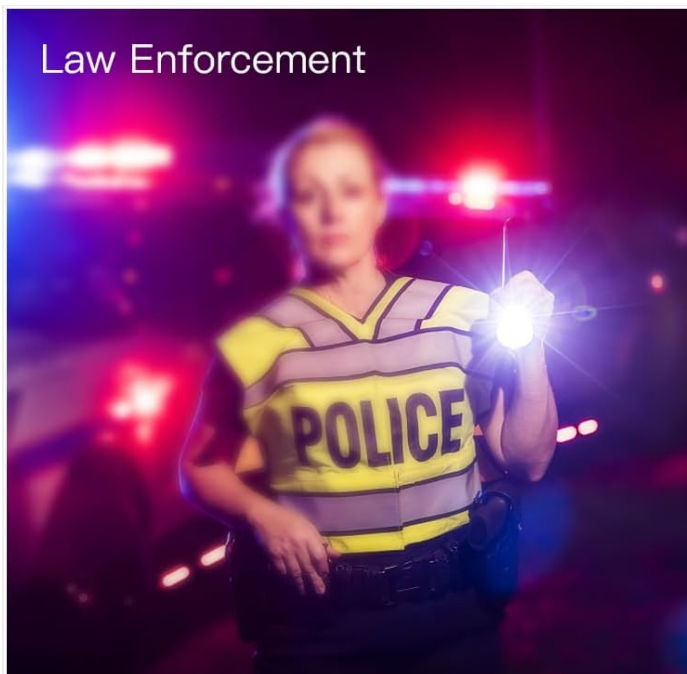


Image: A detailed diagram highlighting the advanced ergonomic design and key components of the XT1C flashlight, including the intelligent battery capacity indicator, polished reflector, heavy-duty clip, patented tactical dual-switch tail cap, and tempered glass lens.

## 2. SETUP

### Battery Installation and Charging:

1. Unscrew the tail cap of the flashlight.
2. Insert the included 18650 Lithium-Ion battery with the positive (+) end facing towards the head of the flashlight.
3. Screw the tail cap back on securely.
4. To charge the battery, locate the micro USB port on the flashlight body (usually under a protective cover).
5. Connect the provided charging cable to the flashlight's micro USB port and the other end to a USB power source (e.g., wall adapter, computer USB port).
6. The battery capacity indicator will show charging status.

Insert the battery to charge

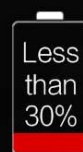
## Battery Capacity Indicator



Green



Orange



Red



Flashing Red

Image: Illustration showing how to insert the battery for charging and connecting the micro USB cable to the flashlight.



# Extreme Waterproof Rating Safety in Any Weather

IPX8 Waterproofing, fully submersible down to 2 meters



IPX8



Impact  
Resistance



Image: Visual representation of the battery capacity indicator lights: Green (Over 70%), Orange (30%-70%), Red (Less than 30%), and Flashing Red (Less than 10%).

## 3. OPERATION

### Tail Cap Dual Switch Control:

The XT1C features a patented dual-switch tail cap for quick and intuitive control, even in low-light conditions. This allows for one-handed operation and instant access to key functions.



Image: A hand demonstrating the operation of the XT1C flashlight, highlighting the patented dual-switch tail cap for one-touch access to various modes.

## Operating Modes:

The XT1C offers two main operating settings: Tactical Setting and Outdoor Setting.

- **Tactical Setting:** Provides instant access to one-touch strobe and one-touch high brightness, ideal for self-defense or emergency situations.
- **Outdoor Setting:** Offers a range of brightness levels suitable for general use, hiking, camping, and other outdoor activities.

Refer to the detailed instructions included in the product packaging for specific button presses to switch between modes and access different brightness levels (e.g., One Touch Strobe, One Touch Turbo, One Touch Low).

## 4. MAINTENANCE

---

Proper maintenance ensures the longevity and optimal performance of your KLARUS XT1C flashlight.

- **Cleaning:** Wipe the flashlight body with a clean, soft cloth. For the lens, use a lens cleaning cloth and solution to avoid scratches.
- **Lubrication:** Periodically apply a thin layer of silicone grease to the O-rings and threads to maintain water resistance and smooth operation.
- **Battery Care:**
  - Charge the battery fully before first use.
  - Avoid over-discharging the battery. Recharge when the indicator shows low capacity.
  - If storing the flashlight for an extended period, remove the battery to prevent leakage.
- **Storage:** Store the flashlight in a cool, dry place away from direct sunlight and extreme temperatures.

## 5. SAFETY AND PRECAUTIONS

---

The KLARUS XT1C is designed with multiple safety features. Please observe the following precautions for safe use:

- **Do Not Stare into Beam:** The flashlight emits a powerful beam. Do not look directly into the light or shine it directly into anyone's eyes to prevent temporary vision impairment.
- **Thermal Protection System (TPS):** The flashlight incorporates a thermal isolation system that monitors internal temperature and adjusts output to prevent overheating, ensuring safety and stability.
- **Water Resistance:** The XT1C has an IPX8 waterproof rating, meaning it is protected against continuous immersion in water up to 2 meters. Ensure all caps and covers are securely closed before exposing to water.
- **Battery Safety:** Use only the recommended battery type. Do not mix old and new batteries or different battery types. Dispose of batteries responsibly.
- **Impact Protection:** The robust construction provides impact resistance, but avoid dropping the flashlight from excessive heights.
- **Reverse Polarity Protection:** This feature protects the flashlight from damage if the battery is inserted incorrectly.





## Thermal Protection System (TPS)

Monitors internal temperature and adjusts output for maximum brightness, while protecting the LED and internal components to ensure safety, stability, and maximum user comfort



Low Battery Capacity  
Protection



Impact Protection



High Temperature  
Protection



Reverse Polarity  
Protection

Image: The XT1C flashlight covered in water droplets, illustrating its IPX8 waterproof rating and ability to withstand wet conditions.

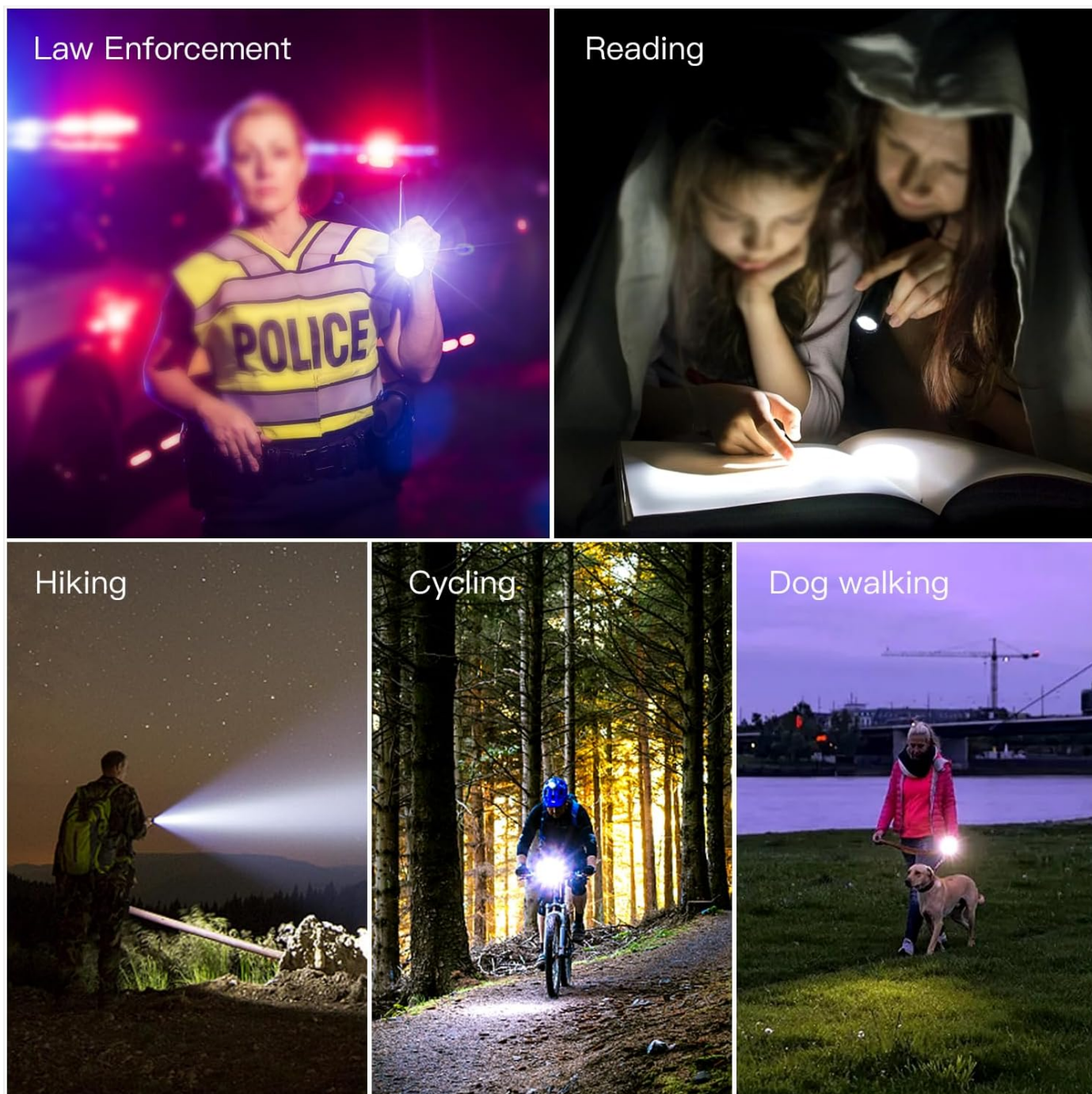


Image: A visual representation of the multi-safety protections integrated into the XT1C flashlight, including low battery capacity protection, impact protection, high temperature protection, and reverse polarity protection, alongside the Thermal Protection System (TPS).

## 6. TROUBLESHOOTING

| Problem                      | Possible Cause   | Solution  |
|------------------------------|--|---|
| Flashlight does not turn on. | Battery is dead or incorrectly inserted. Loose tail cap. | Charge or replace battery. Ensure battery is inserted with correct polarity. Tighten tail cap securely. |
| Light is dim or flickers.    | Low battery. Dirty contacts.                             | Recharge battery. Clean battery contacts and flashlight contacts with a cotton swab.                    |

| Problem                       | Possible Cause  | Solution  |
|-------------------------------|---|---|
| Flashlight gets hot quickly.  | Operating on high mode for extended periods.                          | This is normal due to high lumen output. The Thermal Protection System will automatically reduce output to prevent damage. Switch to a lower mode if prolonged use is needed. |
| Water ingress after exposure. | Tail cap or charging port cover not fully sealed.<br>Damaged O-rings. | Ensure all covers are tightly closed before water exposure. Check O-rings for damage and replace if necessary. Apply silicone grease to O-rings.                              |

## 7. SPECIFICATIONS

---

| Feature                | Detail   |
|------------------------|--|
| Model                  | XT1C   |
| Brightness             | 1000 Lumens (Max)  |
| Runtime                | Up to 53 hours   |
| Light Source           | LED  |
| Material               | Aerospace Aluminum Alloy (HAIII Anodized)                              |
| Dimensions (L x W x H) | 5"D x 0.9"W x 0.9"H (approx. 12.7cm x 2.29cm x 2.29cm)                 |
| Weight                 | 3.84 ounces (approx. 108.87g)  |
| Power Source           | Battery Powered (1 Lithium Ion battery included)                       |
| Water Resistance       | IPX8 (Submersible up to 2 meters)                                      |
| Special Features       | Durable, Rechargeable, Tactical Dual Switch, Thermal Protection System |
| Included Components    | Charging Cable   |

## 8. WARRANTY INFORMATION

---

Specific warranty details for the KLARUS XT1C flashlight are typically provided with the product packaging or can be found on the official KLARUS website. Please retain your proof of purchase for warranty claims.

## 9. CUSTOMER SUPPORT

---

For further assistance, technical support, or inquiries regarding your KLARUS XT1C flashlight, please visit the official KLARUS website or contact their customer service department. You can often find contact information or a support portal on the brand's official online store page.

Visit the [KLARUS Store on Amazon](#) for more information and products.



