

Kenmore 2641202

Kenmore 2641202 2.2 cu. ft. Compact Front Load Washer Instruction Manual

Model: 2641202

INTRODUCTION

This manual provides comprehensive instructions for the safe and efficient operation, installation, and maintenance of your Kenmore 2641202 2.2 cubic foot Compact Front Load Washer. This appliance is designed to thoroughly clean clothes, comforters, and other household fabric items while offering features like Accela Wash and a Steam Option to reduce wash time and wrinkles. It is ENERGY STAR certified for energy efficiency.



Figure 1: Front view of the Kenmore 2.2 cubic foot compact front load washer.

IMPORTANT SAFETY INFORMATION

Please read all instructions carefully before using this appliance to reduce the risk of fire, electric shock, or injury to persons. Keep this manual for future reference. Always follow basic safety precautions, including:

- Ensure the washer is properly installed and grounded by a qualified technician.
 - Do not wash or dry articles that have been previously cleaned in, washed in, soaked in, or spotted with gasoline, dry-cleaning solvents, or other flammable or explosive substances.
 - Do not allow children to play on or in the appliance. Close supervision of children is necessary when the appliance is used near children.
 - Do not reach into the appliance if the tub or agitator is moving.
 - Do not repair or replace any part of the appliance or attempt any servicing unless specifically recommended in this manual or in published user-repair instructions that you understand and have the skills to carry out.
 - Always disconnect the appliance from the power supply before attempting any service.
-

INCLUDED COMPONENTS

Upon unpacking, ensure all the following items are present:

- Instruction Manual
- Filter (2)
- Drain Hose Guide
- Cable Tie

For optimal performance and a leak-free connection, it is advisable to replace the installation kit with each new washer install.

Tools Required:

For optimal performance and a leak-free connection, it is advisable to replace the installation kit with each new washer install.

*Ensure all transit bolts are removed prior to first use.

- Adjustable wrench or 1/2" socket with ratchet
- Adjustable wrench or 9/16" open-end wrench
- Adjustable pliers
- Carpenters level

Optional Accessories:



Parts Included:



Figure 2: Illustration of the included components and optional accessories for the washer. This includes the instruction manual, filters, drain hose guide, and cable tie. Optional accessories like a drain hose extension and stacking kits are also shown.

TOOLS REQUIRED FOR INSTALLATION

The following tools are recommended for proper installation:

- Adjustable wrench or 1/2" socket with ratchet
- Adjustable wrench or 9/16" open-end wrench
- Adjustable pliers
- Carpenter's level

Note: Ensure all transit bolts are removed prior to first use.

INSTALLATION AND SETUP

Proper installation is crucial for the performance and longevity of your Kenmore washer. Follow these guidelines for optimal setup.

Space Requirements

This compact washer is designed for smaller spaces such as studio apartments, basements, condos, and vacation homes. It can be positioned side-by-side with a compatible dryer or stacked to save space. Refer to the dimensions below and ensure adequate clearance for installation and door opening.



Figure 3: The Kenmore 2.2 cubic foot compact front load washer, illustrating its dimensions: 33.3 inches in height, 22.9 inches in depth, and 23.5 inches in width. This compact size is ideal for fitting into various living spaces.



Figure 4: Demonstrates two common installation methods for the Kenmore compact washer: stacked vertically with a compatible dryer (stacking kit sold separately) or placed side-by-side under a countertop, highlighting its versatility for different laundry room configurations.

Water and Power Connections

Connect the washer to appropriate hot and cold water supply lines and a grounded electrical outlet. Ensure all connections are secure to prevent leaks. The drain hose should be properly routed to a standpipe or laundry tub.

Video 1: An official Kenmore video demonstrating the features and compact size of the 24-inch front load clothes washer machine. This video provides a visual overview of the appliance's design and functionality, including its compact nature suitable for various living spaces.

Video 2: An official Kenmore video titled "Walk the Path Laundry," which guides users through the process of measuring their home for appliance delivery and installation. This video emphasizes checking clearances for gates, hallways, doorways, corners, and stairways to ensure a smooth delivery and setup experience for laundry appliances.

OPERATING INSTRUCTIONS

Your Kenmore washer features intuitive controls and a variety of cycles to meet your laundry needs.

Control Panel Overview

The washer is equipped with light-touch controls and an LED display that provides time remaining and cycle status information. Use the central dial to select your desired wash cycle and the touch buttons for additional options.

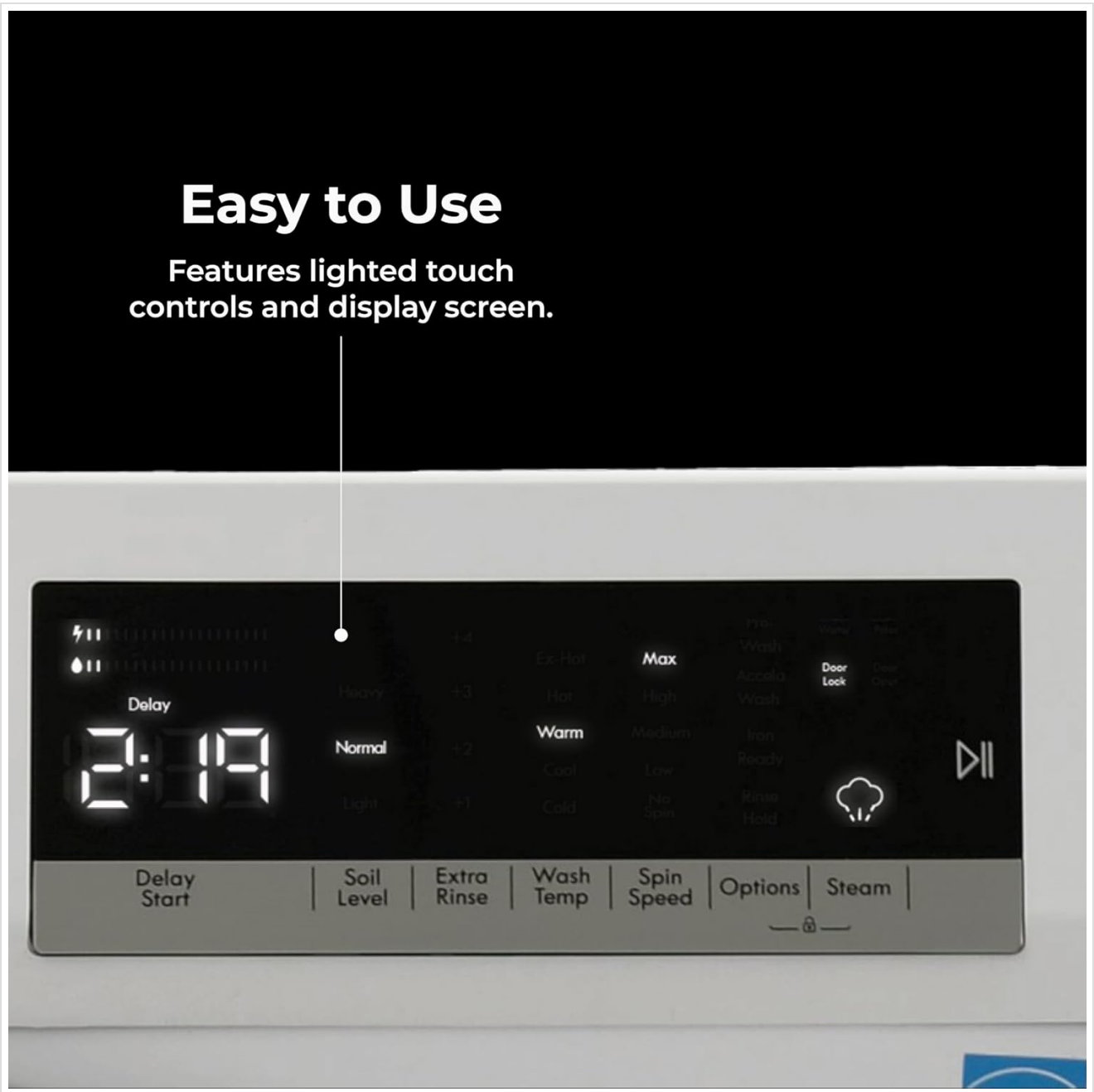


Figure 5: A detailed view of the washer's control panel, featuring an LED display for cycle time and status, along with capacitive touch buttons for customizing wash settings such as delay start, soil level, extra rinse, wash temperature, spin speed, and steam options.

Loading the Washer

Open the front load door and load your clothes into the stainless steel wash basket. Avoid overfilling to ensure optimal cleaning performance. The 2.2 cubic foot capacity can accommodate various items, including comforters.



Figure 6: The interior of the washer, showcasing the durable stainless steel wash basket, designed for household laundry needs.

Selecting a Wash Cycle

Choose from 15 wash cycles to customize your load based on fabric type and soil level. Turn the cycle selector dial to the desired setting:

- **Normal:** For daily laundry.
- **Heavy Duty:** For tough, ground-in stains.
- **Comforter:** For bulky loads.
- **Towels:** For thick, absorbent fabrics.
- **Mixed Load:** To clean a variety of items in one go.
- **Jeans:** To tackle tough denim.
- **Workout Wear:** For active fabrics.
- **Wool:** For an effective clean without hand washing.
- **Delicates:** Treats fragile fabrics with care.
- **Express Wash:** To clean lightly soiled clothes quickly (12 minutes for a 3 lb load).
- **Clean Washer:** For one-touch maintenance of the washer.

- **Drain & Spin:** To remove excess water.
- **Rinse & Spin:** To refresh clothes fast.
- **Sanitize:** Uses high heat for a deep clean, perfect for bedding, baby clothes, and allergy sufferers.

Wash Your Way

- **Accela Wash** uses two powerful sprays to help you speed through the chore of doing laundry, based on a 3 lb load, Express cycle
- **Steam Treat** cycle is tough on stains, easy on clothes
- The **Sani Cycle** uses high heat for a serious clean. Perfect for bedding, baby clothes, and allergy sufferers



Figure 7: Illustrates key washing features: Accela Wash for faster cleaning, Steam Treat for stain removal, and Sani Cycle for deep sanitization, suitable for various laundry needs.



Figure 8: The Kenmore compact washer in a laundry room, highlighting its Express Wash cycle, capable of cleaning a small load in 12 minutes, ideal for quick laundry needs.

Customizing Wash Options

After selecting a cycle, you can further customize your wash with these options:

- **Steam Option:** Adds steam at the end of the cycle to relax wrinkles and reduce the need for ironing.
- **Accela Wash:** Features powerful sprays for faster soaking and cleaning. Active Spray delivers a concentrated detergent mix onto clothes from dual nozzles.
- **Active Rinse:** Provides effective rinsing during high spin speeds.
- **Extra Rinse:** Adds additional rinses to help protect sensitive skin by removing detergent residue.
- **Iron Ready:** Stops short of drying clothes so they are slightly damp, making ironing easier.
- **Delay Start:** Allows you to set the washer to start at a later time.
- **Wash Temp:** Select from 5 temperature options (Hot, Warm, Cold, Ex-Hot, Max).
- **Spin Speed:** Adjust spin speed for different fabric types.
- **Soil Level:** Choose the appropriate soil level for your load.

MAINTENANCE AND CARE

Regular maintenance ensures your Kenmore washer continues to perform efficiently and extends its lifespan.

Cleaning the Washer

- Use the **Clean Washer** cycle regularly to maintain freshness and prevent odor buildup.
- Wipe down the exterior with a soft, damp cloth.
- Clean the detergent dispenser drawer periodically to remove any residue.
- Inspect and clean the drain pump filter (2 filters included) as recommended in the full instruction manual to prevent blockages.
- The stainless steel wash basket is designed for durability and easy cleaning.

Winterizing Your Washer

If your washer is in an area subject to freezing temperatures, follow the winterizing procedures in the full instruction manual to prevent damage.

TROUBLESHOOTING

Before calling for service, check the following common issues and solutions:

Problem	Possible Cause	Solution
Washer does not start	Power cord unplugged; door not closed properly; Start/Pause button not pressed.	Check power connection; ensure door is latched; press Start/Pause button firmly.
Water leaks	Hose connections loose; drain hose improperly installed.	Tighten all hose connections; ensure drain hose is secure and not kinked.
Excessive vibration	Washer not level; transit bolts not removed; uneven load.	Level the washer using adjustable feet; remove all transit bolts (refer to installation); redistribute laundry evenly.
Clothes not clean	Overloading; incorrect detergent amount; wrong cycle selection.	Reduce load size; use recommended detergent amount; select appropriate wash cycle for fabric and soil level.
Error codes on display	Specific malfunction.	Refer to the full instruction manual for a list of error codes and their corresponding solutions.

PRODUCT SPECIFICATIONS

Brand: Kenmore

Model Number: 2641202

Capacity: 2.2 Cubic Feet

Access Location: Front Load

Installation Type: Stackable

Product Dimensions (D x W x H): 22.9" x 23.5" x 33.3"

Item Weight: 73.5 Pounds

Max Spin Speed: 1400 RPM

Noise Level: 57 Decibels

Control Console: Touch

Standard Cycles: 15 (Normal, Heavy Duty, Comforter, Towels, Mixed Load, Jeans, Workout Wear, Wool, Delicates, Express, Clean Washer, Drain & Spin, Rinse & Spin, Sanitize)

Option Cycles: 5 (Steam, Accela Wash, Active Rinse, Extra Rinse, Iron Ready, Delay Start, Wash Temp, Spin Speed, Soil Level)

Special Features: Hygiene Steam

Color: White

Voltage: 115 Volts

Fuel Type: Electric

Certification: Energy Star

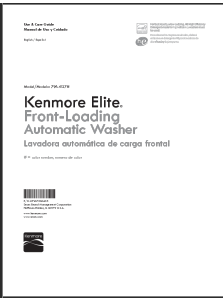
WARRANTY AND CUSTOMER SUPPORT




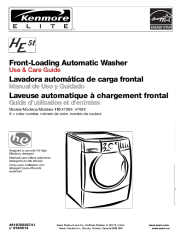

For warranty information, product registration, or to schedule service, please refer to the warranty card included with your appliance or visit the official Kenmore website. Kenmore offers various protection plans for extended coverage.

- **Protection Plans:** Available for purchase, including 3-Year Protection Plan and Complete Protect.
- **Customer Support:** For assistance, please contact Kenmore customer service.

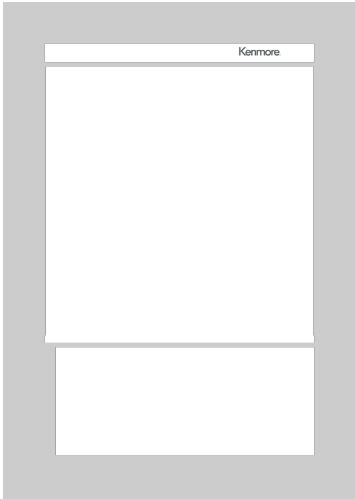
For the most up-to-date support information, please visit the Kenmore website or consult your product's specific documentation.

Related Documents - 2641202

	<p>Kenmore Elite 796.4127# Front-Loading Automatic Washer Use & Care Guide</p> <p>Comprehensive Use & Care Guide for the Kenmore Elite 796.4127# Front-Loading Automatic Washer, covering installation, operation, maintenance, troubleshooting, and warranty information.</p>
---	--

	<p>Kenmore ELITE HE3t Steam Front-Loading Automatic Washer Use & Care Guide</p> <p>User manual for the Kenmore ELITE HE3t Steam Front-Loading Automatic Washer, covering installation, operation, features, care, and troubleshooting. Learn how to get the most out of your high-efficiency appliance.</p>
	<p>Kenmore 40512 Owner's Manual and Use & Care Guide</p> <p>Comprehensive Owner's Manual and Use & Care Guide for the Kenmore Elite 796.4051# front-loading automatic washer. Covers installation, operation, maintenance, troubleshooting, and warranty details. Provided by Sears.</p>
	<p>Kenmore 41022 Elite Front-Loading Washer: Owner's Manual & Use and Care Guide</p> <p>Detailed owner's manual and use & care guide for the Kenmore 41022 Elite front-loading automatic washer. Includes installation, operation, maintenance, troubleshooting, and warranty information.</p>
	<p>Kenmore Elite HE 5t Front-Loading Automatic Washer Use & Care Guide</p> <p>This comprehensive guide provides essential information for the Kenmore Elite HE 5t front-loading automatic washer. Learn about installation requirements, safe operation, features and benefits, maintenance, and troubleshooting tips to ensure optimal performance and longevity of your appliance.</p>
	<p>Kenmore Elite HE3 Front-Loading Automatic Washer Owner's Manual and Installation Instructions</p> <p>Owner's manual and installation guide for the Kenmore Elite HE3 front-loading automatic washer, covering setup, operation, safety, and maintenance. Includes model numbers 110.4282, 110.4483, 110.4482.</p>

[pdf] Instructions Warranty Catalog



West Christina Lifetime coverage on Washer Drive Motor applies only to purchases WARRANTY
SERVICE To obtain the warranty stated below return defective product with proof of original sale a
Kenmore Transformco 1658d408 972d 489f 8600 95ac5fe8c043 images thdstatic catalog Images 16
TransformcoKENMORE 24 in 2 cu ft Front Load White Steam 2641202 The Home Depotc0bebb7 4f43
4192 92ca 61f19c5af98aimages 95ac5fe8c043images c0 c0bebb7 61f19c5af98a DepotKENMORE 4 5
Top Triple Action Impeller 2629262 Warranty InformationWARRANTY TransformcoKenmore 3 8 w
Stainless Steel Basket WayfairKENMORE Depotwashers service 29 2024c0bebb7 95ac5fe8c043assets
wfdn dm document eb982aa9 4af3 4374 97e2 dffd254ddfe4 washers 2024images ||| ||| Washers
WARRANTY SERVICE NOTE: Lifetime coverage on Washer Drive Motor applies only to purchases dated
on or after February 4, 2018 WARRANTY SERVICE To obtain the warranty coverage stated below, return
defective product with proof of origin ||| Washers WARRANTY SERVICE NOTE: Lifetime coverage on
Washer Drive Motor applies only to purchases dated on or after February 4, 2018 WARRANTY SERVICE
To obtain the warranty coverage stated below, return defective product with proof of origin
Washers WARRANTY SERVICE NOTE: Lifetime coverage on Washer Drive Motor
applies only to purchases dated on or after February 4, 2018 WARRANTY SERVICE
To obtain the warranty coverage stated below, return defective product with proof of
original sale to a Kenmore Transformco authorized retailer fro...
lang:en score:12 filesize: 196.17 K page_count: 2 document date: 2024-08-29