

## KTC H34S18S

# KTC 34-inch Curved UWQHD Gaming Monitor

MODEL: H34S18S - INSTRUCTION MANUAL

## 1. Introduction

---

Thank you for purchasing the KTC H34S18S 34-inch Curved UWQHD Gaming Monitor. This manual provides essential information for setting up, operating, and maintaining your new monitor. Please read it thoroughly before use to ensure optimal performance and safety.

# ワイドスクリーン没入体験

34インチの広々とした曲面スクリーンは、従来の単一モニターよりも広い視野を実現。1500Rの曲率と21:9のワイド画面が、没入感あふれるゲーム体験と効率的なマルチタスク処理を提供します。



21:9画面比率



超薄型  
ストリームラインデザイン



1500R曲率



Image: Front view of the KTC 34-inch Curved UWQHD Gaming Monitor.

## 2. Key Features

- **Ultra-fine Ultrawide Display:** Experience a 34-inch curved display with UWQHD 3440x1440 resolution. The 21:9 aspect ratio and 1500R curvature provide an immersive field of view, perfect for gaming and efficient multitasking.
- **Competitive Level High-Speed Performance:** Achieve smooth, lag-free gameplay with a 180Hz refresh rate and 1ms response time, ideal for fast-paced FPS and racing games.
- **Advanced Imaging Technology:** Enjoy rich and deep color expression with a 4000:1 high contrast ratio and 123% sRGB wide color gamut. Adaptive Sync compatibility eliminates screen tearing and stuttering.
- **Multi-angle Adjustment:** The stand offers flexible adjustments including tilt ( $-5^{\circ}$  to  $+20^{\circ}$ ), swivel ( $\pm 20^{\circ}$ ), pivot ( $\pm 5^{\circ}$ ), and height adjustment ( $90 \pm 5$ mm). It also supports VESA 100mm x 100mm wall mounting for versatile setup options.
- **Eye Care Technology:** Features Software Low Blue Light (LBL) and Flicker-Free design to reduce eye strain during prolonged use.
- **Ideal for Multitasking:** Equipped with Picture-in-Picture (PIP) functionality, allowing you to display guide videos during gameplay or manage multiple tasks efficiently.

- **Rich Connectivity Options:** Includes 2x HDMI 2.0 and 2x DisplayPort 1.4 ports for seamless connection to PCs, PS5, Xbox Series X, and Nintendo Switch. A built-in headphone jack enhances the gaming audio experience. Multi-input support allows smooth switching between multiple devices.



Image: Overview of monitor features including UWQHD resolution, contrast ratio, color gamut, HDR10 support, and Picture-by-Picture (PBP) and Picture-in-Picture (PIP) modes.



180Hzの高リフレッシュレートと1msの高速応答速度が、ほとんど残像のない滑らかな動きを実現

**180Hz**  
リフレッシュレート

**1ms**  
(MPRT)  
高速応答速度

ADAPTIVE  
**SYNCSync**  
Adaptive Sync対応



*Image: Visual representation of the monitor's 180Hz refresh rate and 1ms response time, shown with a racing game.*

### 3. Package Contents

Please check that all the following items are included in your package:

- Monitor (1 unit)
- Stand
- Base
- Power Cable
- HDMI Cable
- DisplayPort Cable
- Power Adapter
- Instruction Manual (Japanese)
- Quick Start Guide
- Warranty Card
- Driver

- Mounting Screws



Image: Diagram illustrating the monitor's dimensions and a comprehensive list of all included accessories.

## 4. Setup

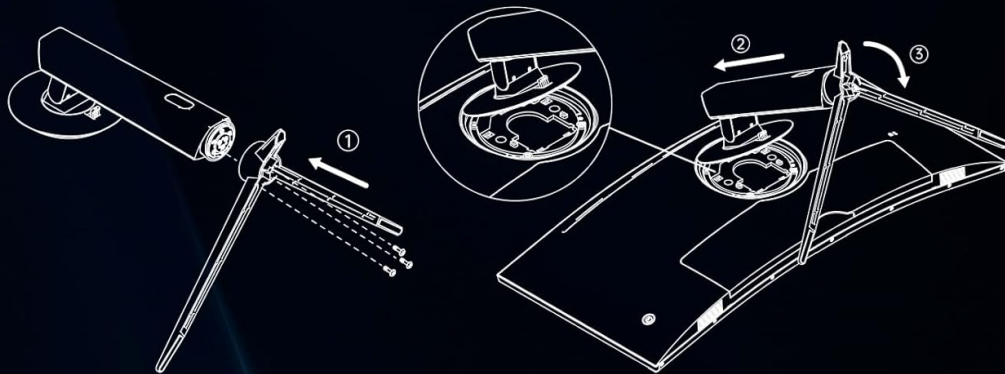
### 4.1. Stand Assembly

Follow these steps to attach the base to the monitor stand:

1. Insert the stand into the base.
2. Secure the stand to the base using the provided screws.
3. Attach the assembled stand to the back of the monitor.

## ベースの取り付けと取り外し

### 1. ベース取り付け手順について:



### 2. ベース全体を分解する場合は、次の手順に従います:



*Image: Step-by-step guide for attaching and detaching the monitor base.*

## 4.2. Connecting the Monitor

Connect the monitor to your power source and input devices:

1. Connect the power adapter to the monitor's DC input port, then plug the power cable into a wall outlet.
2. Connect one end of the HDMI or DisplayPort cable to the corresponding port on your computer or gaming console, and the other end to the monitor.
3. If desired, connect headphones to the monitor's headphone jack.

## 5. Operating Instructions

### 5.1. Power On/Off

Press the power button located on the monitor to turn it on or off.

### 5.2. OSD Menu Navigation

The On-Screen Display (OSD) menu allows you to adjust various monitor settings. Use the joystick/buttons on the monitor to navigate and select options within the OSD menu.



### 5.3. Picture-in-Picture (PIP) and Picture-by-Picture (PBP)

This monitor supports PIP and PBP functions, allowing you to display content from multiple sources simultaneously.

- **PIP:** Displays a smaller window from a second input source over the main display.
- **PBP:** Divides the screen into two or more sections, each displaying content from a different input source.

Refer to the OSD menu for specific settings and controls for PIP/PBP modes.



*Image: The monitor showcasing its Picture-by-Picture (PBP) and Picture-in-Picture (PIP) capabilities, displaying two different PC inputs simultaneously.*

### 5.4. Display Modes

The monitor offers various preset display modes optimized for different content types:

- Standard
- Movie
- Energy
- Office
- FPS (First-Person Shooter)

- RTS (Real-Time Strategy)

Select the appropriate mode from the OSD menu for your viewing preference.

## 6. Adjustments

The monitor stand allows for various ergonomic adjustments:

- **Tilt:** Adjust the screen angle forward ( $-5^{\circ}$ ) or backward ( $+20^{\circ}$ ).
- **Swivel:** Rotate the screen horizontally ( $\pm 20^{\circ}$ ).
- **Pivot:** Rotate the screen vertically ( $\pm 5^{\circ}$ ).
- **Elevation:** Adjust the screen height ( $90 \pm 5\text{mm}$ ).

For alternative mounting, the monitor is compatible with VESA 100mm x 100mm wall mounts.



*Image: Illustrations demonstrating the monitor's pivot, elevation, tilt, and swivel adjustments for optimal viewing comfort.*

## 7. Connectivity



The KTC H34S18S monitor offers a variety of input and output ports:

- **HDMI 2.0:** Two ports (3440x1440 @ 100Hz max)
- **DisplayPort 1.4:** Two ports (3440x1440 @ 180Hz max)
- **USB 2.0:** One port (for upgrades)
- **Headphone Jack:** For audio output

These ports allow connection to various devices including PCs, PS5, Xbox Series X, and Nintendo Switch.



Image: An overview of the monitor's connectivity options, showing HDMI, DisplayPort, and USB ports, along with various devices that can be connected.

## 8. Maintenance

To ensure the longevity and optimal performance of your monitor, follow these maintenance guidelines:

- **Cleaning the Screen:** Gently wipe the screen with a soft, lint-free cloth. For stubborn marks, dampen the cloth with a small amount of screen cleaner specifically designed for monitors. Do not spray cleaner directly onto the screen.
- **Cleaning the Casing:** Use a soft, dry cloth to clean the monitor casing. Avoid using abrasive cleaners or solvents.

- **Ventilation:** Ensure the monitor's ventilation openings are not blocked to prevent overheating.
- **Power Off When Not in Use:** Turn off the monitor when not in use for extended periods to save energy and prolong its lifespan.

## 9. Troubleshooting

If you encounter any issues with your monitor, refer to the following common troubleshooting steps:

- **No Power:** Check if the power cable is securely connected to both the monitor and the power outlet. Ensure the power adapter is functioning correctly.
- **No Signal:** Verify that the video cable (HDMI or DisplayPort) is properly connected to both the monitor and your input device (PC, console). Ensure the correct input source is selected on the monitor via the OSD menu.
- **Flickering Screen:** Check the video cable connection. Ensure your graphics card drivers are up to date. Try enabling or disabling Adaptive Sync in the monitor's OSD or your graphics card settings.
- **Image Distortion/Poor Quality:** Adjust the resolution and refresh rate settings on your computer to match the monitor's native resolution (3440x1440) and desired refresh rate (up to 180Hz).
- **Sound Issues:** If using the headphone jack, ensure your headphones are properly connected and the volume is adjusted. Check audio settings on your connected device.

If the problem persists after trying these steps, please contact customer support.

## 10. Specifications

Feature	Specification
Brand	KTC
Model	H34S18S
Screen Size	34 inches
Resolution	3440 x 1440 pixels (UWQHD)
Aspect Ratio	21:9
Curvature	1500R
Refresh Rate	180Hz
Response Time	1ms
Contrast Ratio	4000:1
Color Gamut	123% sRGB
Panel Type	HVA
Surface Description	Non-glare
HDMI Ports	2 (HDMI 2.0)
DisplayPort Ports	2 (DP 1.4)

Feature	Specification
USB Ports	1 (USB 2.0)
Product Dimensions (W x H x D)	81.2 x 52.5 x 29.2 cm
Product Weight	9.9 kg
VESA Compatibility	100mm x 100mm

## 11. Warranty and Support

KTC provides a **3-year warranty** and a **12-month exchange service** for this product. We are committed to promptly addressing any questions or issues you may have regarding your product.

For inquiries or support, please contact us:

- **Phone:** 050-3606-8990
- **Email:** [support@ktcplay.com](mailto:support@ktcplay.com)

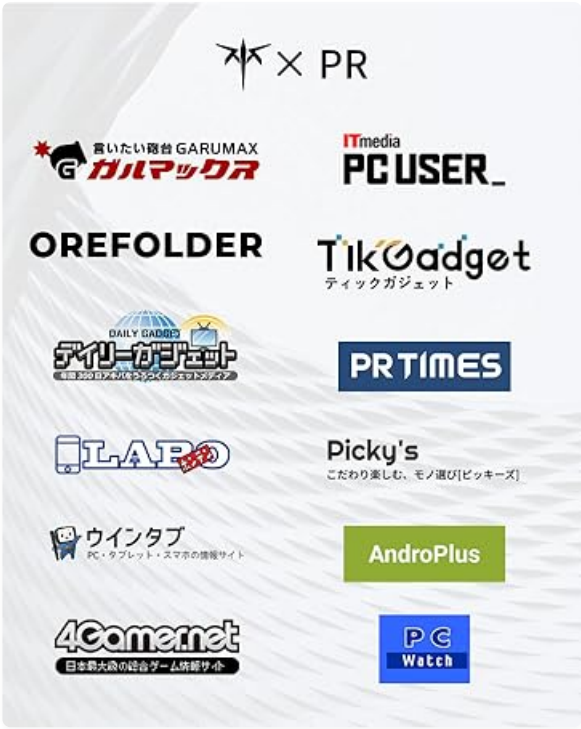


Image: Details on KTC's 3-year warranty and customer support contact information.