

## Phomemo WuAiTing-CA-P15-RD

# Phomemo P15 Label Maker Printer User Manual

Model: WuAiTing-CA-P15-RD

## 1. INTRODUCTION

---

The Phomemo P15 is a portable, wireless label maker designed for various labeling needs, from home organization to office classification. It utilizes thermal transfer printing technology, offering durable and clear labels without the need for ink. Its compact design and Bluetooth connectivity allow for easy operation via a smartphone or tablet application. This manual provides detailed instructions for setting up, operating, maintaining, and troubleshooting your P15 label maker.

## 2. WHAT'S IN THE BOX

---

Upon unpacking your Phomemo P15 Label Maker, please ensure all the following items are present:

- Phomemo P15 Label Maker Machine
- 1-Roll Labels Tape (12x40mm Black on White)
- USB-C Charging Cord
- User Manual (this document)



*Image 2.1: The Phomemo P15 Label Maker and its included accessories neatly packaged in its gift box.*

### 3. PRODUCT OVERVIEW

---

The Phomemo P15 features a retro-inspired design with intuitive controls. Familiarize yourself with the main components:

- **Power Button:** Located on the right, press and hold for 3 seconds to power on/off.
- **Date Button:** Located in the center, press to instantly print the current date.
- **Book of Answers Button:** Located on the left, press to print a random phrase or a customized message.
- **Label Cutter:** A lever on the side for clean label cutting after printing.
- **Label Compartment:** Located under the top cover, where label cartridges are inserted.



Image 3.1: Overview of the Phomemo P15 label maker, highlighting its main buttons and retro design.

## 4. SETUP GUIDE

---

### 4.1. Charging the Device

Before first use, fully charge the Phomemo P15 using the provided USB-C charging cord. Connect the cord to the charging port on the device and a standard USB power adapter (not included). The indicator light will show charging status.

### 4.2. Loading Label Tape

1. Open the top cover of the label maker.
2. Insert a Phomemo P15 label cartridge into the compartment, ensuring it clicks into place. The label tape should feed out through the slot.
3. Close the top cover securely. The device will automatically recognize the label type and size.



Image 4.1: Example of Phomemo P15 label tape cartridges.

### 4.3. App Installation and Bluetooth Pairing

1. Download the **"Print Master"** app from the App Store (iOS) or Google Play Store (Android).
2. Ensure your Phomemo P15 is powered on and Bluetooth is enabled on your smartphone or tablet.
3. Open the "Print Master" app. The app will guide you to connect to the P15 via Bluetooth. Select "Phomemo P15" from the list of available devices.
4. Once connected, the app will display a connected status, and you are ready to create labels.





Image 4.2: Steps for downloading the app, connecting via Bluetooth, and preparing to print.

## 5. OPERATING INSTRUCTIONS

### 5.1. Creating Labels with the Print Master App

The "Print Master" app offers extensive customization options:

- **Text:** Enter text, choose from over 200 fonts, adjust size, style (bold, italic), and alignment.
- **Icons & Symbols:** Access over 600 symbols and 1500+ icons to enhance your labels.
- **Borders & Templates:** Utilize over 200 border materials and various pre-designed templates for quick label creation.
- **Barcodes & QR Codes:** Generate and print barcodes or QR codes directly from the app.
- **Image Integration:** Insert images, with features for resizing, cropping, rotation, and filtering.
- **Voice & Image Recognition:** Advanced features for automated text extraction and label generation.



*Image 5.1: The Print Master app interface demonstrating various creative features for label design.*

## 5.2. Using the Date Button

For quick dating of items like food storage, documents, or memory boxes, simply press the dedicated **Date Button** on the device. The P15 will instantly print the current date on a label without needing to open the app.



# A printer for every festive need



Image 5.2: Demonstrating the one-press date printing feature for quick labeling.

## 5.3. Using the Book of Answers Button

The **Book of Answers Button** provides a fun, interactive feature. Pressing this button will print a random phrase. You can also customize the phrases within the app to print personalized messages, making it suitable for unique gifts or interactive activities.





Image 5.3: The 'Book of Answers' feature in action, printing various responses.

#### 5.4. Diverse Label Applications

The Phomemo P15 supports a wide range of label types, including pre-cut, continuous, patterned, magnetic, colored font, ribbon, fabric iron-on, premium glitter, and luminous labels. This versatility allows for applications such as:

- **Household Labeling:** Organize kitchen items, storage containers, and personal belongings.
- **Office & School:** Classify files, notebooks, and school supplies.



- **Gift Wrapping & Decoration:** Create personalized messages for gifts or decorative tags.
- **Specialty Labels:** Use luminous labels for switches or iron-on labels for fabric items.



Image 5.4: Examples of household labeling for organization.



# Household labeling made easy



Image 5.5: Personalized labels used for gift wrapping.

## Make Classification A Breeze

cleansing lotion  
06-23-2026

loose powder  
12-16-2025



Image 5.6: Luminous labels for enhanced visibility.

# Gift wrapping made personal



Image 5.7: Application of an iron-on sticker for DIY projects.

## 6. MAINTENANCE

To ensure the longevity and optimal performance of your Phomemo P15 Label Maker, follow these maintenance guidelines:

- **Cleaning:** Gently wipe the exterior of the device with a soft, dry cloth. Avoid using harsh chemicals or abrasive materials. For the print head, use a cotton swab lightly dampened with rubbing alcohol, ensuring the device is off and dry before use.
- **Storage:** Store the label maker in a cool, dry place away from direct sunlight and extreme temperatures.
- **Label Cartridges:** Use only genuine Phomemo P15 label cartridges to prevent damage and ensure print quality. Replace cartridges when empty.
- **Durability:** The P15 is designed to be resistant to water and oil, making it suitable for various environments. However, avoid prolonged exposure to liquids or harsh conditions.



Image 6.1: Key features of the Phomemo P15, including its durability and printing capabilities.

## 7. TROUBLESHOOTING

If you encounter issues with your Phomemo P15, refer to the following common problems and solutions:

Problem	Possible Cause	Solution
Device does not power on	Low battery; Power button not held long enough	Charge the device fully; Press and hold the power button for 3 seconds.
Cannot connect via Bluetooth	Bluetooth off; Device out of range; App issue	Ensure Bluetooth is on; Move device closer; Restart app and device; Check app permissions.
Poor print quality / Faint print	Incorrect label type; Dirty print head; Faulty label cartridge	Ensure correct label cartridge is used; Clean the print head; Replace label cartridge.
Label jam / Not feeding	Improperly loaded cartridge; Obstruction	Re-insert the label cartridge correctly; Remove any obstructions from the label path.
App not responding / Crashing	Software glitch; Outdated app version	Restart the app; Check for app updates in your app store; Reinstall the app if necessary.
Automatic label recognition fails	Improperly loaded cartridge; Damaged cartridge	Ensure cartridge is seated correctly; Try a different, known-good cartridge.

## 8. SPECIFICATIONS



Below are the technical specifications for the Phomemo P15 Label Maker Printer:

Feature	Detail
Product Dimensions	1.83"D x 2.95"W x 6.45"H
Item Weight	5.6 ounces (160 Grams)
Connectivity Technology	Bluetooth
Printing Technology	Thermal Transfer
Maximum Black and White Print Resolution	203 Dots Per Inch (DPI)
Maximum Print Speed (Monochrome)	20 ppm (pages per minute)
Maximum Media Size	0.59 inch (15mm)
Compatible Devices	Smartphones, Tablets (Android, iOS)
Control Method	App
Batteries	1 Lithium Polymer battery (included)
Wattage	7 Watt-hours
Special Features	Portable, Inkless, Wireless, Rechargeable, Print Continuous & Pre-cut Label Tapes, Rich Font Icon Pattern, Creative Print Functions (Barcode, Text, Picture, QR 2D Code, Table, Date, Border, Icon, Shape, Pattern, Template, Save as, Line, Image Recognition, Voice Recognition, Automated Text Extraction, Automated Image Resizing, Automated Image Cropping, Automated Image Rotation, Automated Image Filtering, Automated Image Compression)

## 9. WARRANTY AND SUPPORT

### 9.1. Warranty Information

The Phomemo P15 Label Maker Printer comes with **alimited warranty**. Please refer to the warranty card included in your product packaging or visit the official Phomemo website for detailed terms and conditions regarding warranty coverage and duration.


### 9.2. Customer Support

For technical assistance, product inquiries, or warranty claims, please contact Phomemo customer support through their official website or the contact information provided in your product documentation. When contacting support, please have


© 2025 Phomemo. All rights reserved.

**Instruction**

**D30** Product Instruction



Please read this instruction carefully before using this product and keep it properly.  
For more detailed information, please check the official website: [www.phoneme.com](http://www.phoneme.com)




Operation guide QR code

**Note:** Please scan the QR code to get the primer operation guide.

Table of Contents			
<b>01</b>	<b>02</b>	<b>03</b>	<b>04</b>
Packing List	Parts Description	App Download Method	Best Guide
<b>05</b>	<b>06</b>	<b>07</b>	<b>08</b>
Paper Roll Installation	Printer Connection	Confirm the Label Size	Printing Guide
<b>09</b>	<b>10</b>	<b>11</b>	
Product Identification	Daily Cleaning	Solutions for Common Issues	
<b>12</b>	<b>13</b>	<b>14</b>	
Product Warranty	RCC Caution	Warranty / Maintenance Card	

**01.Packing List**

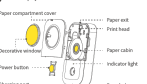


Printer's      Product instruction's      Charging wire's

The number of paper rolls in the list is subject to the actual shipment.

**02.Parts Description Appearance Introduction**


**Printer display**



Paper compartment cover  
Decorative window  
Power button  
Charging port  
Paper exit  
Print head  
Paper roller  
Indicator light  
Repair hole

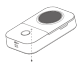
**Labeled paper display**

Various labels available for purchase



Gap paper display  
Continuous paper display

**03.Parts Description Power Button and Indicator Light**



Indicator light

**Power button description**

Action	Operation method	Function
Press and hold 2s	Turn on/off	
Click	Print or Pause	
Double click	Print the content of the off-line print	


**Power indicator status**

Green Keep on	Normal status (printing)
+ Green Flash slowly	Charging with power on
* Green Flash quickly	Charging with power off
Red Keep on	Low level of paper, color gamut, left temperature
+ Red Flash slowly	20% battery
* Red Flash quickly	10% battery

**04.App Download Method**




**Method A:** Please use your mobile phone to scan the QR code to download the App.




**Method B:** Search and download

**05.Best Guide**


**01 Press and hold for 2s to turn on**



**02 Open the paper compartment cover of the machine**




**03 Take out the label paper, tear off the auto laminating sticker**




**04 Put the printing paper in the compartment with the printing area up**



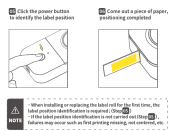
**05 Pull out the label paper to make its length for normal printing**



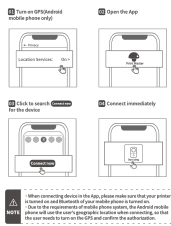
**06 Close the paper compartment cover of the machine**







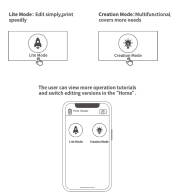
#### 06. Printer Connection



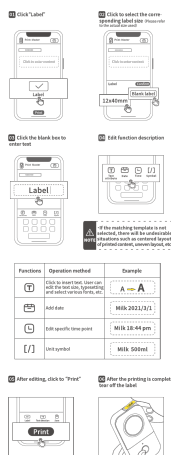
#### 07. Confirm the Label Size



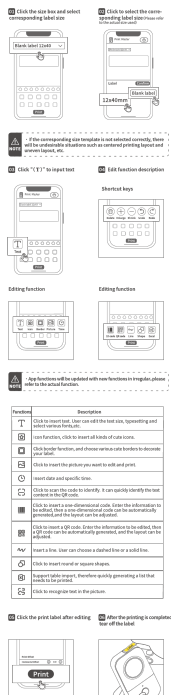
#### 08. Printing Guide Select Edit Version



#### 08. Printing Guide Lite Mode



#### 08. Printing Guide Creation Mode



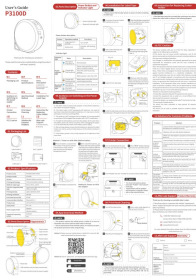


#### 09. Product Specifications

## Phomemo D30 Small Label Printer Instruction Manual

Comprehensive instruction manual for the Phomemo D30 Small Label Printer, covering setup, app download, paper installation, printer connection, printing guides (Lite and Creation modes), product specifications, daily cleaning, and troubleshooting common issues.





	<p><a href="#">Phomemo P3100D Portable Label Maker User Guide</a></p> <p>User's guide for the Phomemo P3100D portable label maker, covering setup, operation, troubleshooting, and product specifications. Learn how to install label tape, connect via Bluetooth, and maintain your device.</p>
	<p><a href="#">Phomemo D30 Small Label Printer Instruction Manual</a></p> <p>Discover the Phomemo D30 Small Label Printer user manual, providing comprehensive instructions for setup, operation, app connectivity, paper installation, printing guides (Lite and Creation modes), product specifications, daily cleaning, and troubleshooting common issues. Optimize your labeling tasks with this portable thermal printer.</p>
	<p><a href="#">Phomemo M220 Label Maker User Manual</a></p> <p>Comprehensive guide for the Phomemo M220 label maker, covering packing list, product specifications, appearance introduction, component description, paper roll installation, app download and connection, label size confirmation, printing guide, troubleshooting, and warranty information.</p>