

GNCC GP5

GNCC 2K Indoor Security Camera User Manual

Model: GP5

1. INTRODUCTION

Thank you for choosing the GNCC 2K Indoor Security Camera. This camera is designed to provide comprehensive home surveillance with advanced features such as 2K high-definition video, 360° pan and tilt functionality, intelligent motion detection and tracking, two-way audio communication, and clear night vision. It supports both local TF card storage and cloud storage options, and is compatible with 2.4GHz Wi-Fi networks. This manual will guide you through the setup, operation, and maintenance of your new security camera.

2. WHAT'S INCLUDED

Please check the package contents to ensure all items are present:

- GNCC 2K Indoor Security Camera
- Power Adapter
- USB Cable
- Mounting Bracket
- Mounting Screws and Wall Plugs
- User Manual



Image: GNCC 2K Indoor Security Camera with a smartphone showing its live view.

3. SETUP GUIDE

3.1 Physical Installation

1. **Choose a Location:** Place the camera on a flat surface or mount it to a wall/ceiling using the provided bracket. Ensure it is within range of your 2.4GHz Wi-Fi network.
2. **Power On:** Connect the USB cable to the camera and the power adapter, then plug the adapter into a power outlet. The camera will power on and its indicator light will begin to flash.

3.2 App Installation & Account Creation

3. **Download the App:** Search for "OSAIO" in your smartphone's app store (App Store for iOS or Google Play Store for Android) and download the application.
4. **Create Account:** Open the OSAIO app and follow the on-screen instructions to register a new account or log in if you already have one.

3.3 Wi-Fi Connection & Pairing

5. **Add Device:** In the OSAIO app, tap the "+" icon to add a new device. Select your camera model from the list.
6. **Connect to Wi-Fi:** Follow the app's instructions to connect the camera to your 2.4GHz Wi-Fi network**Note: This camera does not support 5GHz Wi-Fi.** Ensure your phone is connected to the same 2.4GHz network during setup.
7. **Scan QR Code:** The app will display a QR code. Hold your camera approximately 6-8 inches (15-20 cm) in front of your phone screen until you hear a prompt from the camera indicating successful scanning.
8. **Completion:** Once connected, the camera's indicator light will turn solid blue. You can now name your camera and begin using it.



Image: Key features of the GNCC 2K Indoor Security Camera.

4. OPERATING THE CAMERA

4.1 Live View & Pan/Tilt Control

Open the OSAIO app and select your camera to view the live feed. Use the on-screen controls to pan (horizontal 355°)

and tilt (vertical 60°) the camera lens to monitor different areas of your home.

2K FHD 360° Coverage, Capturing Everything

With 2K FHD live view 24/7, ensuring that nothing is missed.



Image: Demonstrating 360° coverage with pan and tilt.

4.2 Motion Detection & Tracking

The camera features Smart Perceive Technology for motion detection. When motion is detected, you will receive instant alert notifications on your phone. You can adjust the motion detection sensitivity in the app settings. Enable auto

movement tracking to have the camera automatically follow moving objects within its field of view.



Image: Motion detection notifications on a smartphone.

Video: This video demonstrates the motion detection and tracking capabilities of the GNCC Indoor Security Camera, showing how it alerts users to activity and follows movement within the monitored area.

4.3 Two-Way Audio

With the built-in microphone and speaker, you can communicate with anyone near the camera. Tap the microphone icon in the app to speak, and listen through the speaker. This feature is ideal for checking in on pets, children, or elderly family members.

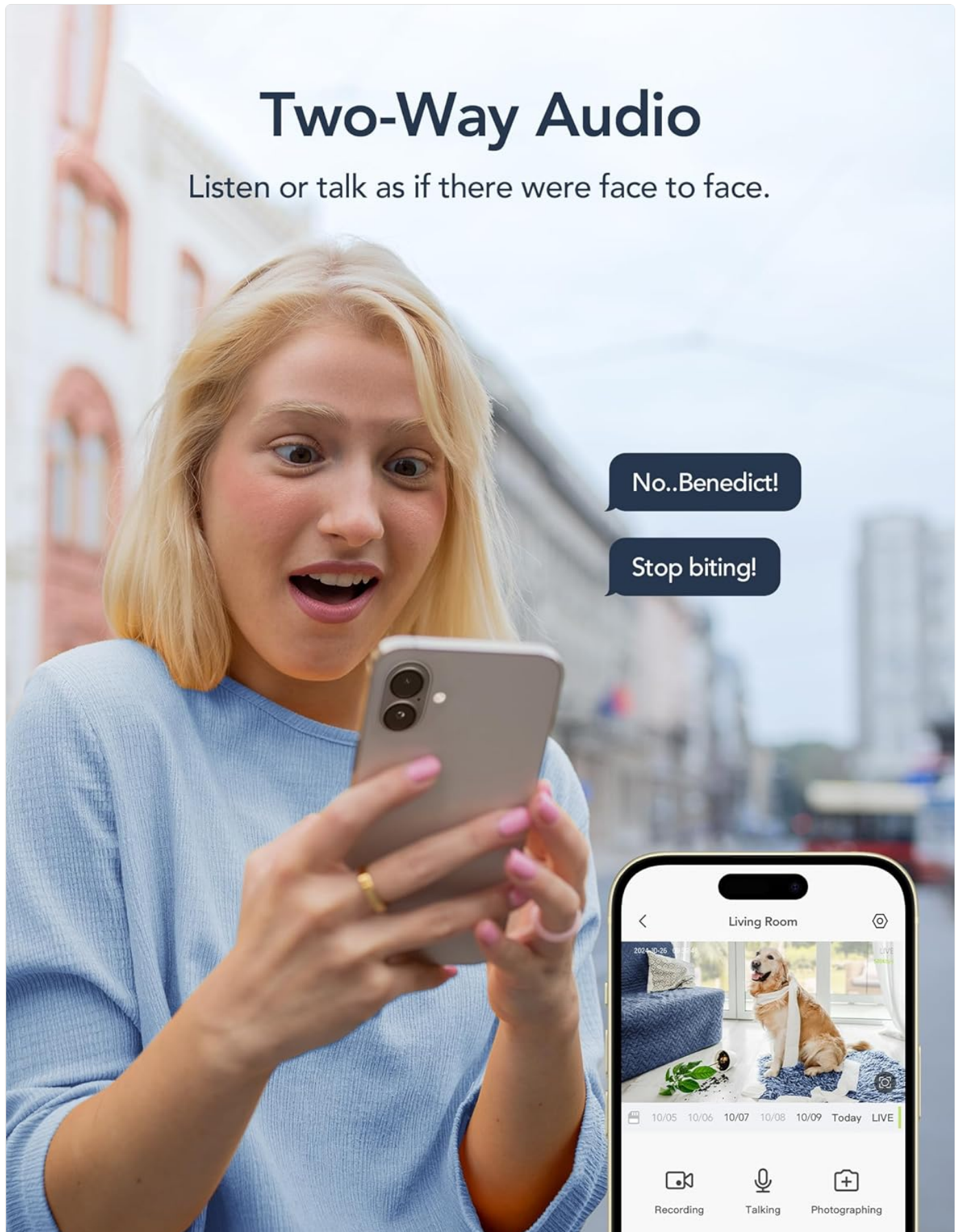


Image: Using the two-way audio feature to communicate.

4.4 Night Vision

The camera automatically switches to night mode in low-light conditions, providing clear black-and-white video up to 33 feet (10 meters) in pitch darkness. This ensures continuous monitoring day and night.

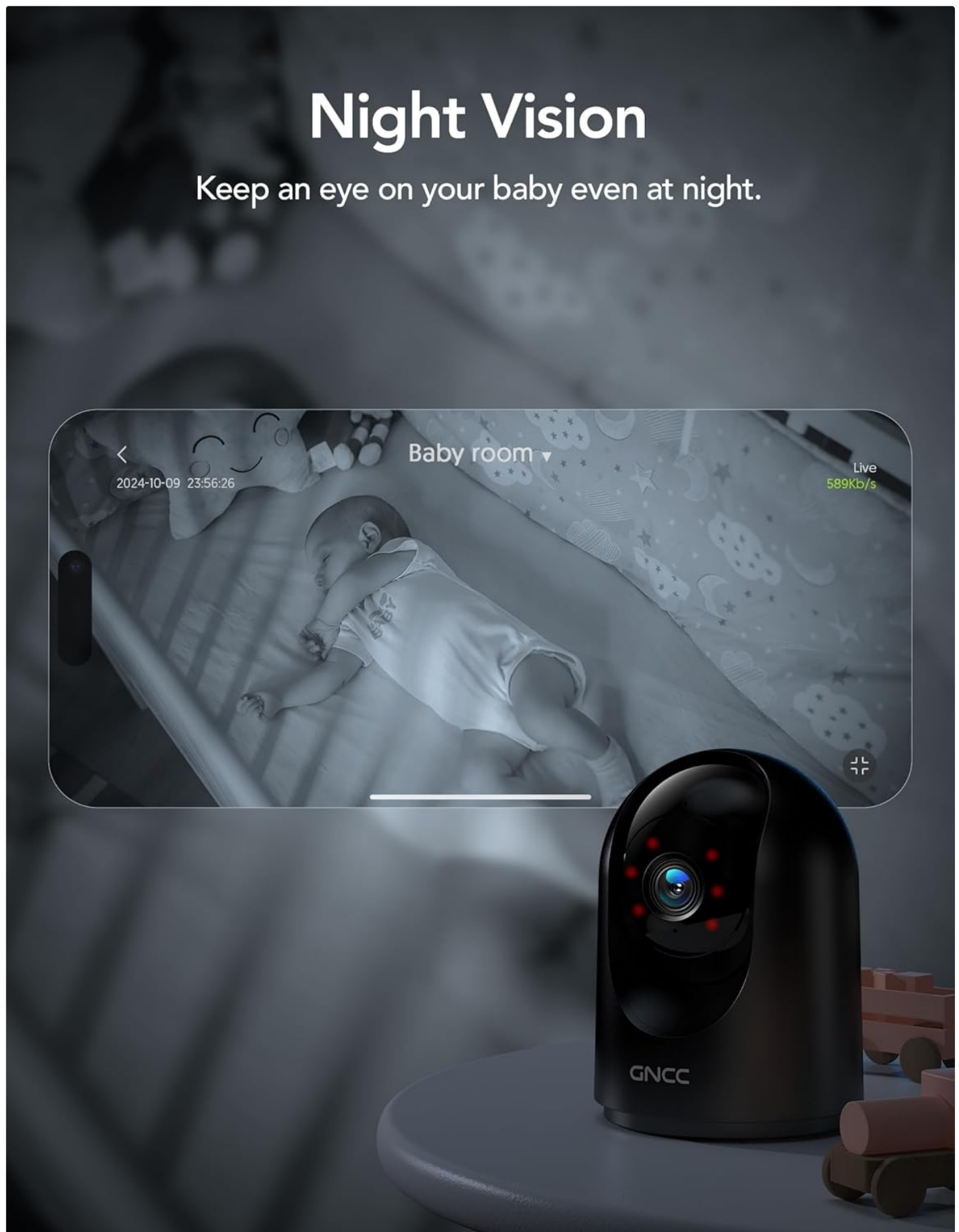


Image: Night vision view of a baby sleeping.

4.5 Recording & Storage

Your GNCC camera offers flexible storage options:

- **TF Card Storage:** Insert a TF (microSD) card (up to 128GB, not included) into the camera's slot for continuous 24/7 recording.
- **Cloud Storage:** Subscribe to the cloud storage service via the OSAIO app to securely store your recordings. A 14-day free trial is typically available. All cloud videos are encrypted for privacy.



Image: Optional storage options for the camera.

4.6 Smart Home Integration

The GNCC camera is compatible with Amazon Alexa and Google Assistant. Link your camera through the respective smart home app to enable voice control. For example, you can say "Alexa, show me the living room" to view your live camera feed on a compatible smart display.

Work With Amazon Alexa

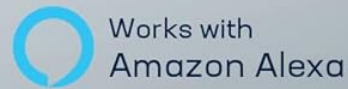
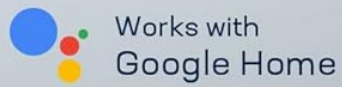


Image: GNCC camera working with Amazon Alexa.

5. MAINTENANCE

- **Cleaning:** Use a soft, dry cloth to clean the camera lens and body. Avoid using harsh chemicals or abrasive cleaners.

- **Firmware Updates:** Regularly check the OSAIO app for available firmware updates. Keeping your camera's firmware up-to-date ensures optimal performance and security.
- **Secure Placement:** Ensure the camera is securely mounted or placed to prevent accidental falls or damage.

6. TROUBLESHOOTING

Problem	Possible Cause	Solution
Camera offline/Cannot connect to Wi-Fi	Incorrect Wi-Fi password; Camera too far from router; 5GHz Wi-Fi network; Network congestion.	Verify Wi-Fi password. Move camera closer to router. Ensure you are connecting to a 2.4GHz Wi-Fi network. Restart your router and camera.
Poor video quality	Weak Wi-Fi signal; Dirty lens; Insufficient lighting.	Improve Wi-Fi signal strength. Clean the camera lens. Ensure adequate lighting or check night vision settings.
Motion alerts not received	Motion detection disabled; App notifications turned off; Incorrect sensitivity settings.	Enable motion detection in the app. Check phone notification settings for the OSAIO app. Adjust motion detection sensitivity.
Two-way audio not working	Microphone/speaker muted in app; Phone volume too low; Network issues.	Ensure microphone and speaker are enabled in the app. Increase phone volume. Check network connection.

7. SPECIFICATIONS

Feature	Detail
Model Number	GP5
Video Capture Resolution	2K (2560x1440)
Pan/Tilt Range	Horizontal 355°, Vertical 60°
Connectivity	2.4GHz Wi-Fi (IEEE 802.11b/g/n)
Storage Options	TF Card (up to 128GB, not included), Cloud Storage
Night Vision Distance	Up to 33 feet (10 meters)
Audio	Two-Way Audio (Built-in microphone and speaker)
Smart Home Compatibility	Amazon Alexa, Google Assistant
Product Dimensions	2.95 x 2.95 x 4.33 inches
Item Weight	6 ounces
Power Input	5V/1A (via USB)

8. WARRANTY AND SUPPORT

GNCC products are designed for reliability and performance. For detailed warranty information, please refer to the warranty card included in your product packaging or visit the official GNCC website. If you encounter any issues or have



questions regarding your camera, please contact GNCC customer support through the OSAIO app or the contact information provided on the official website.





Your feedback is important to us, and GNCC is committed to continuously improving our products and services.



Image: GNCC brand commitment and global reach.

Related Documents - GP5

	<p>GNCC Indoor Camera C2 User Guide</p> <p>User guide for the GNCC Indoor Camera C2, covering setup, features like crystal clear video, night vision, two-way audio, motion/sound detection, and cloud/SD card storage. Includes instructions on managing device settings, sharing the camera, and troubleshooting tips.</p>
	<p>GNCC P1 Indoor Camera User Guide</p> <p>Comprehensive user guide for the GNCC P1 Indoor Camera, covering setup, features, device controls, settings, and troubleshooting tips for optimal home security.</p>

	<p>GNCC T1 Pro Outdoor Security Camera User Manual</p> <p>A comprehensive guide to the GNCC T1 Pro 2K Security Camera, covering setup, features, and app integration for home security.</p>
	<p>GNCC Indoor Cam GP4 User Manual: Setup, Features, and Support</p> <p>Comprehensive user manual for the GNCC Indoor Cam GP4, covering product diagram, setup instructions, LED indicator status, warranty, app usage, social channels, and compliance information.</p>
	<p>GNCC GF2 Floodlight Cam User Manual: Installation, App Setup, and Troubleshooting Guide</p> <p>This user manual provides comprehensive instructions for installing, setting up, and using the GNCC GF2 Floodlight Cam. It covers hardware installation, the WowCam app, device features, and common troubleshooting tips for home security and smart lighting.</p>
	<p>GNCC K1 Pro 2K Outdoor WiFi Security Camera User Manual</p> <p>User manual for the GNCC K1 Pro 2K outdoor WiFi security camera. Learn about installation, app setup, features like auto-tracking and color night vision, troubleshooting, and technical specifications for home surveillance.</p>

Documents - GNCC – GP5

no relevant documents