

Manuals+

[Q & A](#) | [Deep Search](#) | [Upload](#)

manuals.plus /

- › [LOFOV](#) /
- › [LOFOV 360° 4 Channel Dash Cam User Manual \(Model RM\)](#)

LOFOV RM

LOFOV 360° 4 Channel Dash Cam User Manual

Model: RM

1. INTRODUCTION

This manual provides detailed instructions for the installation, operation, and maintenance of your LOFOV 360° 4 Channel Dash Cam, Model RM. Please read this manual thoroughly before using the product to ensure proper function and longevity.



Figure 1: LOFOV 360° 4 Channel Dash Cam and Accessories

2. PACKAGE CONTENTS

Verify that all items are present in the package:

- 1 x Dual Dash Cam Unit
- 1 x Adjustable Suction Mount
- 1 x Rear Camera
- 1 x Rear Camera Cable
- 1 x Lighter Car Charger Power Cable
- 1 x USB Type-C Charging Cable
- 1 x User Manual
- 1 x 64GB High-Speed Memory Card (Micro-SD, Class 10 U3)
- 2 x Screws
- 1 x 3M Adhesive Pad



Figure 2: Included Package Contents

3. SETUP AND INSTALLATION

3.1 Memory Card Preparation

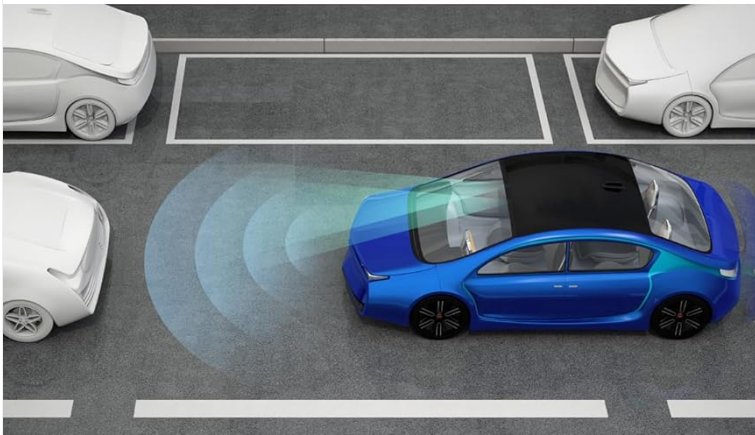
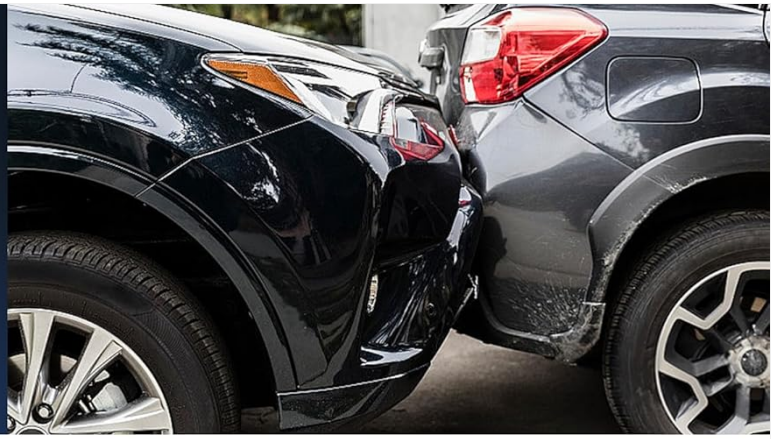
The dash cam requires a micro-SD card (Class 10 U3 speed, up to 256GB max). A 64GB card is included. If formatting the TF card on a computer, ensure it is formatted to FAT32. The exFAT format, common on Windows, is not compatible with this device.

3.2 Dash Cam Installation

1. Attach the adjustable suction mount to the main dash cam unit.
2. Securely mount the dash cam to your vehicle's windshield, ensuring a clear view of the road and interior.
3. Connect the rear camera to the main unit using the provided rear camera cable.
4. Position the rear camera as desired, typically on the rear windshield.
5. Connect the lighter car charger power cable to the dash cam and your vehicle's 12V power outlet.
6. Route all cables neatly to avoid obstructing your view or interfering with driving.

G-Sensor & Emergency Lock

Built-in G-sensor for emergency locking the current file from being overwritten in case of collision.



24 Hours Parking Monitor

Includes motion detection and parking monitoring. Turns on automatic video recording when it detects a collision or shake.

Loop Recording

Automatically overwrite the oldest video and save the current one when the card is full.



Figure 3: Installation Diagram

4. OPERATING INSTRUCTIONS

4.1 Power On/Off

The dash cam will automatically power on and begin recording when your vehicle starts. To manually power on/off, press and hold the power button.

4.2 Navigating the Menu

Use the arrow buttons to navigate through menu options and the OK button to confirm selections. The 'M' button typically accesses the menu or switches modes.

Your browser does not support the video tag.

Video 1: Demonstrates how to navigate the menu options and settings on the LOFOV 4 Channel Dash Cam, including resolution, loop recording, and G-sensor settings.

4.3 Recording Modes and Features

- **360° All-Around Coverage:** The dash cam features four lenses (front, rear, left, right) capable of simultaneous FHD 1080P recording. The front three lenses are adjustable for optimal angle capture.

COMPACT DESIGN SMALLER SIZE

QUAD CAMER

Front + Left + Right + Rear



LOFOV[®]

 Wide Angle	 4 x FHD 1080P	 Audio Recording	 Free 64G Picro Card
 G-Sensor Lock	 Innovative Design	 Parking Monitor	 Loop Recording

Figure 4: Quad Camera View

QUAD CAMER

Front + Left + Right + Rear



LOFOV®



Figure 5: Adjustable Camera Angles

SUPER NIGHT VISION

LOFOV[®] The cabin camera has an F1.8 aperture and 4 infrared lights



Figure 6: Individual Camera Views (Front, Inside, Left/Right, Rear)

Package Content



1 x dual dash cam



1 x Adjustable Suction Mount



1 x Rear camera



1 x Rear camera cable



1 x Lighter car charger power



1 x USB Type-C charging cable



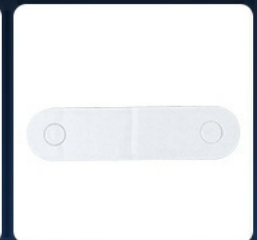
1 x User manual



1X64GB high speed memory card



2 x Screws



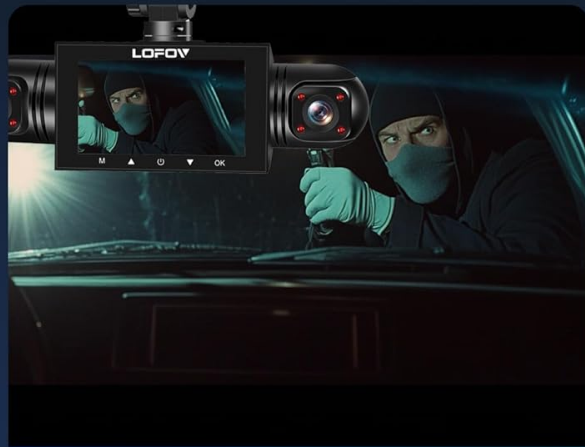
1 x 3M adhesive

Figure 7: Wide Angle Coverage

- **HD Display:** Features a 3.0-inch IPS screen for live video feedback.
- **Super Night Vision:** Equipped with 8 LED infrared lights and Wide Dynamic Range (WDR) technology to enhance clarity in low-light conditions and prevent overexposure. Front, inside, and rear cameras record clear images even in unlit environments.

24-hour Parking Monitoring

LOFOV® Four cameras record the motion around the vehicle at the same time to implement this feature, an additional car hardwir kit is required.



Protect your car



Automatic lock video evidence

Figure 8: Super Night Vision Performance

4 Channel Dash Cam With Wide Angle

Features with Front 170° + Left 170° + Right 170° + Rear 170° camera, providing all-around protection. Shows both sides of the dead end, reduces the blind spots and captures more details, records every moment of your drive.

LOFOV®

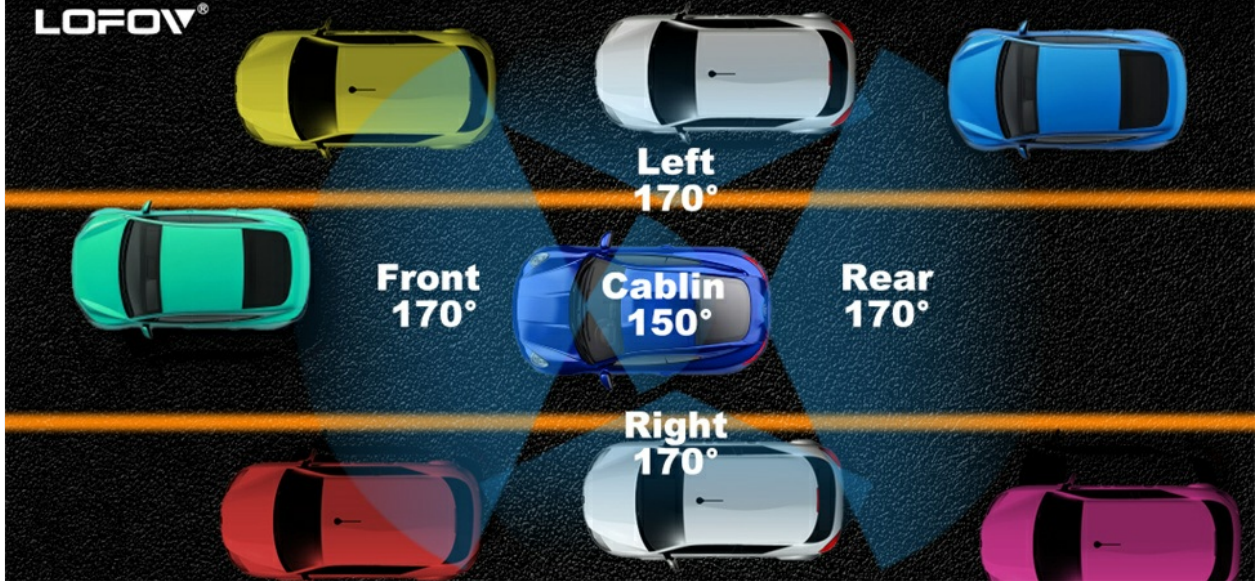


Figure 9: Super Night Vision 2.0 & WDR Technology

- **G-Sensor and Emergency Lock:** The built-in G-sensor automatically detects sudden shakes or collisions, locking the current footage to prevent it from being overwritten during loop recording.
- **Loop Recording:** Records video in continuous loops (e.g., 3-minute segments). When the memory card is full, the oldest unlocked videos are automatically overwritten.
- **24-Hour Parking Mode:** When the vehicle is parked and turned off, the dash cam automatically switches to parking mode. It monitors the area around the car and records video for 1 minute upon detecting motion or impact. This feature requires a continuous power supply via a hardwire kit or external battery.

360° ALL AROUND PROTECTION

QUAD CAMERA: Front + Left + Right + Rear

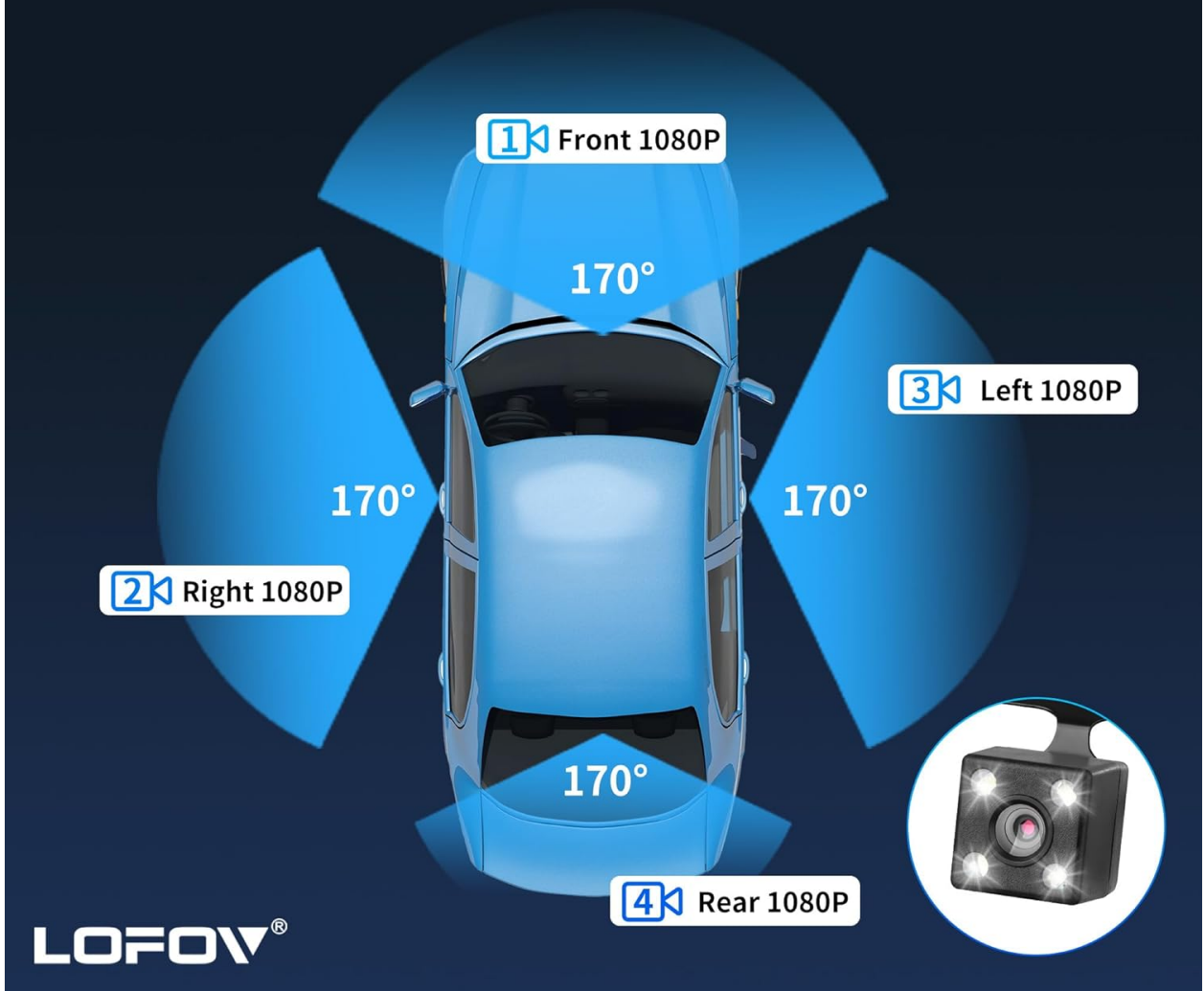


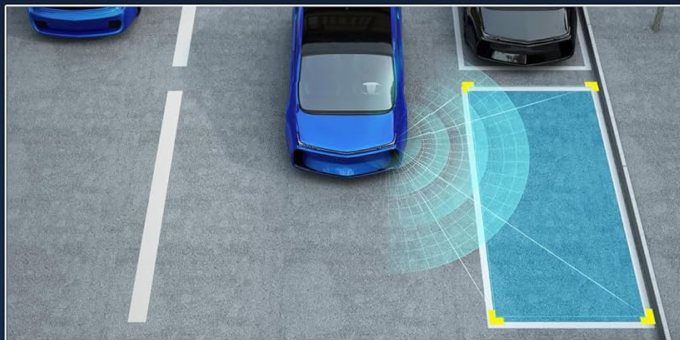
Figure 10: 24-Hour Parking Monitoring

Safe Parkin

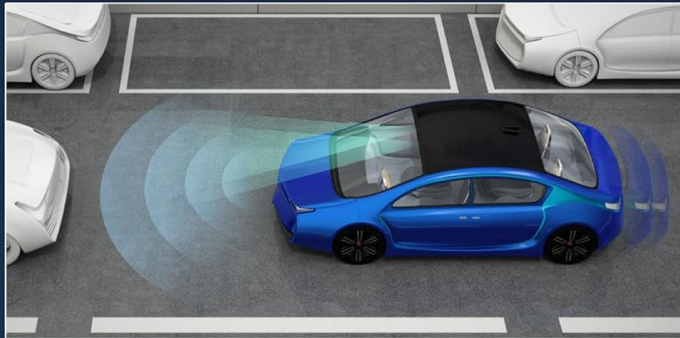
triple recording camera



parking guideline
automatically



Parking Monitor



Collision Induction

Figure 11: G-Sensor, Parking Monitor, and Loop Recording

EXCELLENT TEMPERATURE RESISTANCE

Built to resist extreme temperatures, withstanding a range of -4°F to 140°F. This exceptional temperature tolerance protects against the risks of overheating or freezing, ensuring a longer lifespan than ordinary dash camera for cars.

LOFOV®



Figure 12: Safe Parking Features

5. MAINTENANCE

5.1 Memory Card Management

Regularly format the memory card within the dash cam's settings to ensure optimal performance and prevent data corruption. Back up important footage before formatting.

5.2 Cleaning

Wipe the camera lenses and screen with a soft, lint-free cloth. Avoid using abrasive cleaners or solvents that could damage the device.

5.3 Temperature Resistance

The dash cam is designed to operate in temperatures ranging from -4°F to 140°F (-20°C to 60°C). Operating outside this range may affect performance or damage the device.

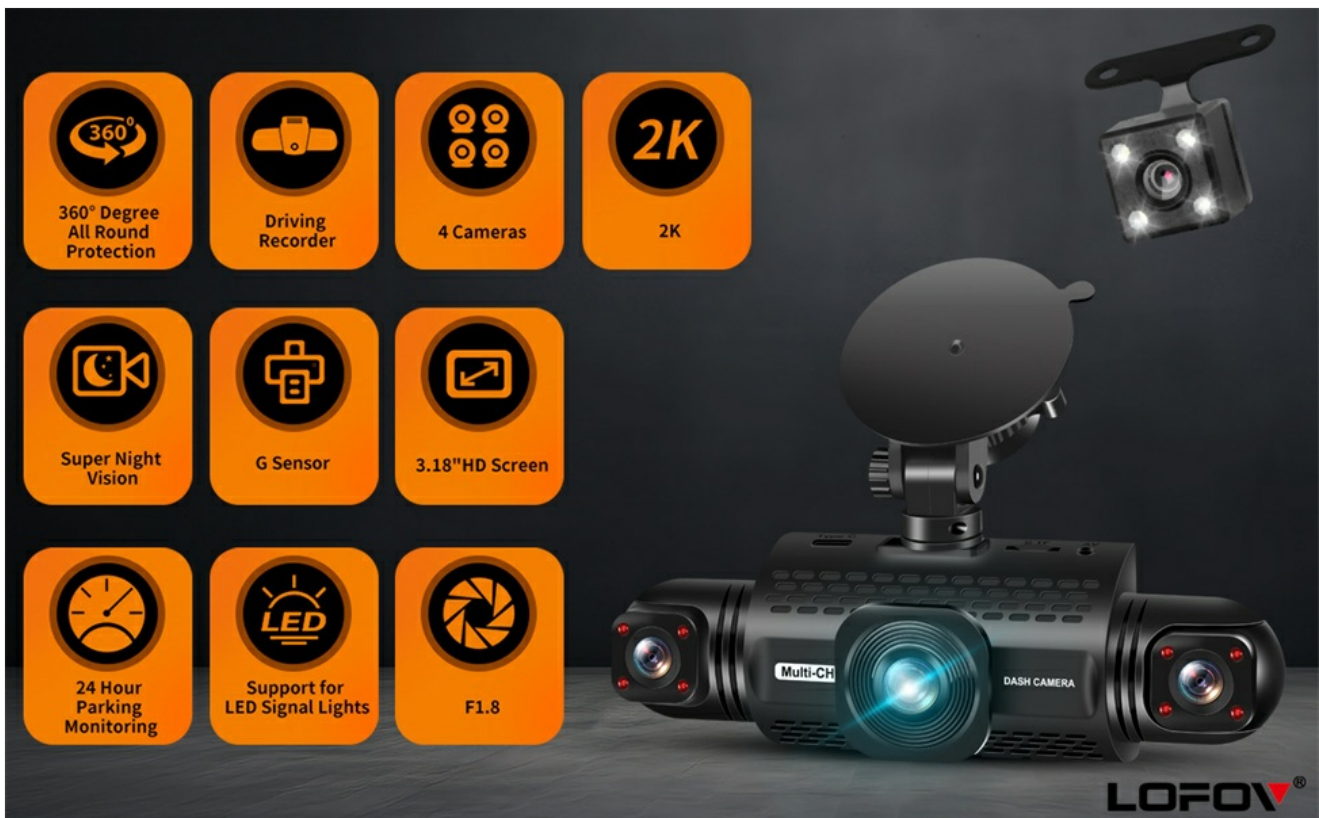


Figure 13: Temperature Resistance Range

6. TROUBLESHOOTING

- **Device Not Powering On:** Ensure the power cable is securely connected to both the dash cam and the vehicle's power outlet. Check the vehicle's 12V outlet for power.
- **Recording Issues:**
 - Ensure the memory card is inserted correctly and is not full.
 - Format the memory card regularly to prevent data corruption.
 - Verify loop recording settings are configured as desired.
- **Poor Video Quality:**
 - Clean the camera lenses.
 - Check the resolution settings in the menu (2K, 1080P, 720P).
 - Ensure WDR and Night Vision features are enabled for low-light conditions.
- **G-Sensor Sensitivity:** If the G-sensor is too sensitive, it may lock too many files. Adjust the sensitivity setting in the menu to a lower level if needed.
- **Parking Mode Not Working:** Ensure the dash cam is connected to a continuous power supply (hardwire kit or external battery) for 24-hour parking mode functionality.
- **Difficulty Navigating Menus:** Refer to Video 1 in the Operating Instructions section for a visual guide on menu navigation.

7. SPECIFICATIONS

Brand	LOFOV
Model Name	RM

Color	White
Product Dimensions	3.15"D x 4.33"W x 8.66"H
Item Weight	14.4 ounces
Operation Mode	Continuous
Included Components	SD Card (64GB)
Special Features	360 Degree, Voice Control, 24-Hour Radar Detection Parking Monitoring, Automatic Incident Detection, Blind Spot Detection, Built-In Microphone, Built-In Speaker, Compact Design, G-Sensor, Internal Memory, Loop Recording, Motion Sensing, Mute Function, Night Vision, Parking Monitor, Reverse Assist
Operating Temperature Range	-4°F to 140°F (-20°C to 60°C)
UPC	677899491419
ASIN	B0DL2PFX4H

8. WARRANTY AND SUPPORT

For warranty information or technical support, please refer to the contact details provided with your product packaging or visit the official LOFOV website. Additional protection plans may be available for purchase from authorized retailers.