

## CREWORKS MLM-N930

# CREWORKS 1100W Metal Lathe 220 x 750 MM Instruction Manual

Model: MLM-N930

## 1. INTRODUCTION

This manual provides essential information for the safe and efficient operation, setup, and maintenance of your CREWORKS 1100W Metal Lathe. Please read this manual thoroughly before operating the machine to ensure proper use and to prevent injury or damage.

The CREWORKS 1100W Metal Lathe is a compact yet powerful machine, ideal for small to medium-sized metalworking projects. It features an 1100W motor, a 220 mm swing over bed, and a 750 mm distance between centers, with a 38 mm spindle bore. Its high-precision 3-jaw chuck and granular precision controls make it suitable for tasks requiring high accuracy, such as turning, drilling, and threading.

## 2. SAFETY INSTRUCTIONS

Always prioritize safety when operating machinery. Failure to follow safety guidelines can result in serious injury or damage to the equipment.

- **Wear appropriate personal protective equipment (PPE):** This includes safety glasses, hearing protection, and appropriate work attire. Avoid loose clothing, jewelry, or long hair that could get caught in moving parts.
- **Ensure a safe work environment:** Keep the work area clean, well-lit, and free from obstructions. Ensure adequate ventilation.
- **Read and understand the manual:** Familiarize yourself with all controls, adjustments, and operating procedures before starting the machine.
- **Secure the workpiece:** Always ensure the workpiece is securely clamped in the chuck or other holding devices before beginning any operation.
- **Never leave the machine unattended:** Always turn off and unplug the machine when not in use or before performing maintenance.

- **Use correct tools and accessories:** Only use accessories and tools designed for this lathe and ensure they are in good condition.
- **Emergency Stop:** Locate and understand how to use the emergency stop button before operation.

## 3. INCLUDED COMPONENTS

---

The following components are typically included with your CREWORKS 1100W Metal Lathe:

- 1x Mini Lathe
- 1x Chuck Key
- 3x Chuck Jaws
- 2x Screwdrivers
- 3x Wrenches
- 6x Metal Gears
- 1x Steady Rest
- 1x Follow Rest
- 1x Cutting Oil Bottle
- 5x Hex Keys
- 1x Dead Center
- 3x Sliding Guide Levers
- 5x Brazed Carbide Tools
- 1x Toolbox
- 1x Instructions Manual



Video: Unboxing and Included Components (for a similar CREWORKS mini metal lathe model).

## 4. SETUP

---

### 4.1 Unpacking and Placement

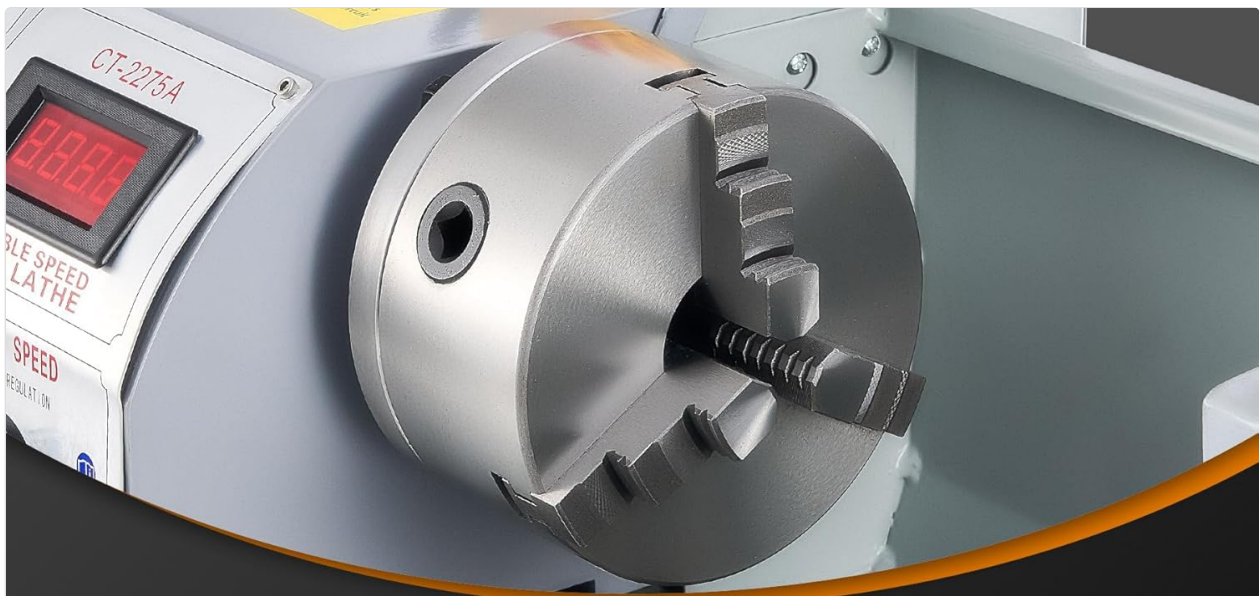
Carefully remove the lathe from its packaging. Due to its weight (75.1 kg), it is recommended to have assistance during unpacking and placement. Place the lathe on a sturdy, level workbench capable of supporting its weight and the forces generated during operation. Ensure sufficient space around the machine for safe operation and material handling.

### 4.2 Initial Inspection

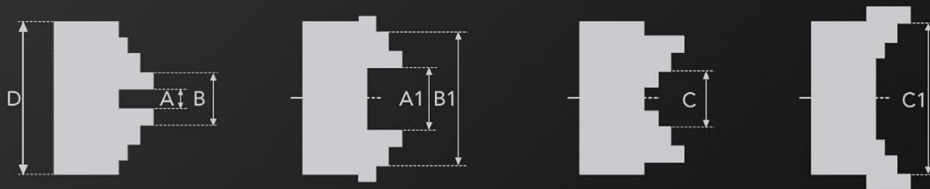
Before first use, inspect all components for any signs of damage during transit. Check that all bolts and fasteners are securely tightened. Lubricate moving parts as indicated in the maintenance section.

### 4.3 Chuck Installation and Adjustment

The 3-jaw chuck is designed for high precision. Ensure the chuck jaws are correctly installed and tightened using the chuck key. The chuck can securely hold both round and square workpieces.



## MANDRINO ADATTABILE A 3 GRIFFE



125 mm (5 in.) 3-Backen-Futter Spannbereich

Interne Klemmbacken		Externe Backen
A-A1	B-B1	C-C1
2,5–40 mm (0,1–1,6 in.)	38–125 mm (1,5–5 in.)	38–110 mm (1,5–4,3 in.)

Image: Detailed view of the 3-jaw chuck, showing its robust construction.

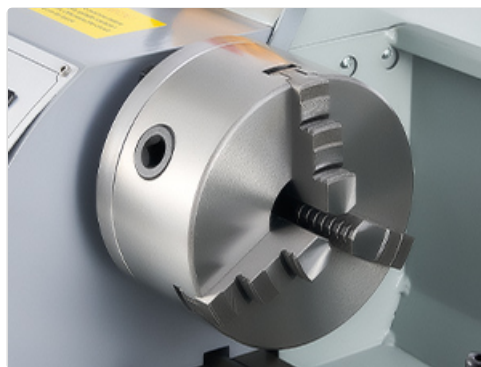


Image: Adjusting the 3-jaw chuck for workpiece clamping.

### 4.4 Gear Installation (for Threading)

For threading operations, specific metal gears need to be installed. Refer to the threading chart on the machine for the correct gear configuration for desired metric or imperial threads. Securely fasten the gears using the provided wrenches.

# "SET DI INGRANAGGI IN METALLO RESISTENTE"

Costruzione Resistente all'Usura per Forte ed Efficiente  
Potenza di Trasmissione

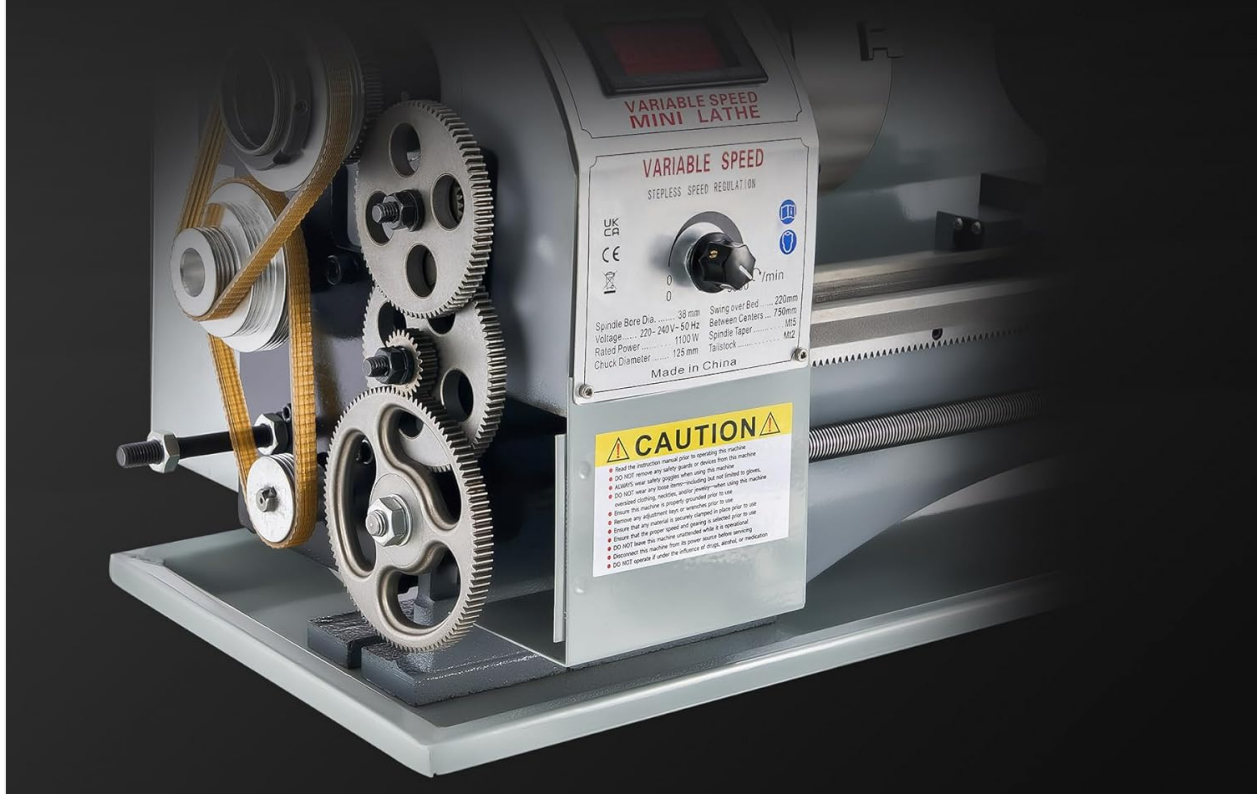


Image: The durable metal gear set for various operations, including threading.

Your browser does not support the video tag.

Video: Installation of gears for threading on a similar CREWORKS mini metal lathe model.

## 4.5 Tool Post and Tailstock Setup

Install the 4-way tool post and secure your cutting tools. The tailstock can be adjusted along the bed for supporting longer workpieces or for drilling operations. Ensure both are properly aligned and locked in position before use.

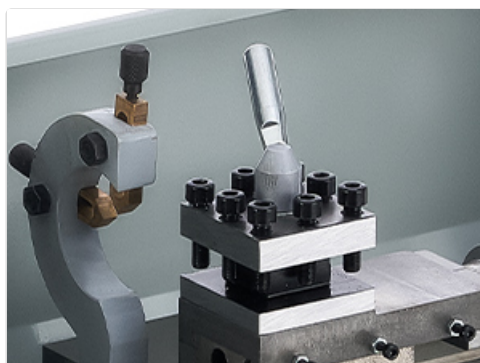


Image: The 4-way tool post allows for quick changes of cutting tools.



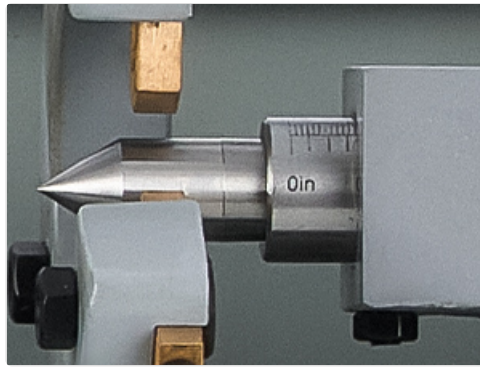


Image: The tailstock provides support for longer workpieces and drilling.

## 5. OPERATING INSTRUCTIONS

### 5.1 Powering On and Speed Control

Connect the lathe to a 220V power supply. Use the main power switch to turn on the machine. The digital display shows the current spindle speed, which can be adjusted continuously from 0 to 3000 RPM using the variable speed control knob. Always start at a lower speed and gradually increase as needed for the material and operation.

# DISPLAY DIGITALE REGOLAZIONE DELLA VELOCITÀ

Liscio e Preciso Regolazione Continua Fino a **3000 giri/min**



Image: Digital display for real-time speed monitoring and variable speed control.



Image: The emergency stop button for immediate shutdown.

## 5.2 Manual and Automatic Feed

The lathe supports both manual and automatic feed for precise material removal. Use the handwheels for manual adjustments of the carriage and cross slide. Engage the automatic feed for consistent material removal during turning operations.

# PRECISIONE GRANULARE

con display e contrassegni chiari

The image shows a grey mini lathe with a digital display and various handwheels. Below the main image, five circular callouts provide detailed views of specific controls, each with a label in Italian:

- Velocità Digitale Display**: A circular inset showing the digital display with the number '8888' and the text 'CT-2275A' and 'VARIABLE SPEED MINI LATHE'.
- Volantino del Carrello**: A circular inset showing the carriage handwheel.
- Volantino a Scorrimento Trasversale**: A circular inset showing the cross slide handwheel.
- Ruota di Controllo Composta**: A circular inset showing the compound control wheel.
- Volantino Avanzamento Coda**: A circular inset showing the tailstock advance handwheel.

Image: Granular precision controls with clear markings for accurate movements.

Video: Demonstrating automatic feed operation on a similar CREWORKS mini metal lathe model.

## 5.3 Applications

This lathe is versatile and can be used for various precision tasks including turning, drilling, threading, and cutting. It is suitable for working with materials such as wood, plastic, brass, and aluminum.



Image: Various applications of the CREWORKS Metal Lathe.

## 6. MAINTENANCE

Regular maintenance ensures the longevity and optimal performance of your lathe.

- **Cleaning:** After each use, clean the lathe thoroughly, removing all chips and debris. Use a brush or compressed air. Avoid using water directly on electrical components.
- **Lubrication:** Regularly lubricate all moving parts, including the lead screw, guide rails, and handwheel mechanisms, with appropriate machine oil.
- **Inspection:** Periodically inspect all bolts, nuts, and screws for tightness. Adjust as necessary. Check the condition of the drive belt and gears for wear.
- **Chuck Guard:** Ensure the transparent chuck guard is clean and free from damage to maintain visibility and protection.

## 7. TROUBLESHOOTING

Here are some common issues and their potential solutions:

- **Machine not powering on:** Check power connection, main switch, and emergency stop button. Ensure the power outlet is functional.
- **Excessive vibration or noise:** Inspect for loose components (e.g., chuck, tool post, motor mounting bolts). Ensure the workpiece is securely clamped. Check for worn gears or belts.
- **Inaccurate cuts or poor surface finish:** Verify tool sharpness and correct tool setup. Check for play in the carriage or cross slide. Ensure the tailstock is properly aligned.
- **Speed control issues:** If the digital display shows inconsistent readings or speed cannot be adjusted, consult the manufacturer's support.

8. SPECIFICATIONS



### SPECIFICHE



Materiale: acciaio

Potenza Nominale: 1,5 HP (1100 W)

Oscillazione Sopra il Letto: 220 mm (8,7 pollici)

Foro del Mandrino: 38 mm (1,5 pollici)

Conicità della Contropunta: MT#2

Cono del Mandrino: MT#5

Intervallo di Filettatura Metrica: 0,5-2,5 mm

Intervallo di Filettatura in Pollici: 10–44 tpi

Distanza dal Centro: 750 mm (29,5 pollici)

Diametro Mandrino: 125 mm (5 pollici)

Velocità Massima del mandrino: 3000 giri al minuto

Peso Netto: 75 kg (165,3 libbre)

Image: Key specifications and dimensions of the lathe.

Feature	Specification
Model Number	MLM-N930
Material	Stainless Steel, ABS, Cast Iron
Rated Power	1100W
Voltage	220V
Power Type	AC_DC
Swing Over Bed	220 mm (8.7 inches)
Distance Between Centers	750 mm (29.5 inches)
Spindle Bore	38 mm (1.5 inches)



Feature	Specification
Chuck Diameter	125 mm (5 inches)
Max Spindle Speed	3000 RPM
Tailstock Taper	MT#2
Spindle Taper	MT#5
Metric Thread Range	0.5-2.5 mm
Inch Thread Range	10-44 tpi
Net Weight	75.1 kg (165.3 lbs)

## 9. WARRANTY AND SUPPORT

For warranty information, technical support, or service inquiries, please refer to the contact details provided with your purchase documentation or visit the official CREWORKS website. Keep your purchase receipt as proof of purchase for any warranty claims.