

ScopeAround SA200S

ScopeAround SA200S Digital Otoscope with 1.85-inch IPS Screen User Manual

Model: SA200S | Brand: ScopeAround

1. INTRODUCTION

This manual provides detailed instructions for the safe and effective use of your ScopeAround SA200S Digital Otoscope. This device is designed for visual inspection of the ear canal and eardrum, featuring an integrated 1.85-inch IPS screen, a 720p HD camera, and adjustable LED lighting. It also supports photo and video capture for documentation. Please read this manual thoroughly before operating the device and retain it for future reference.

2. SAFETY INFORMATION

- Do not insert the otoscope too deeply into the ear canal to avoid injury.
- Always use the provided specula to prevent direct contact with the ear canal.
- Clean the lens and accessories thoroughly before and after each use to prevent cross-contamination. Refer to the "Maintenance and Cleaning" section.
- Keep the device out of reach of children. Adult supervision is required if used on children.
- Do not use the device if you experience pain or discomfort. Consult a medical professional.
- Avoid exposing the device to extreme temperatures, direct sunlight, or moisture.
- Do not attempt to disassemble or repair the device yourself. Contact customer support for assistance.
- The built-in battery pack is non-removable.

ScopeAround

SA200S

Safety & Clean

Effectively Avoid Ear Canal Injury and Cross-infection

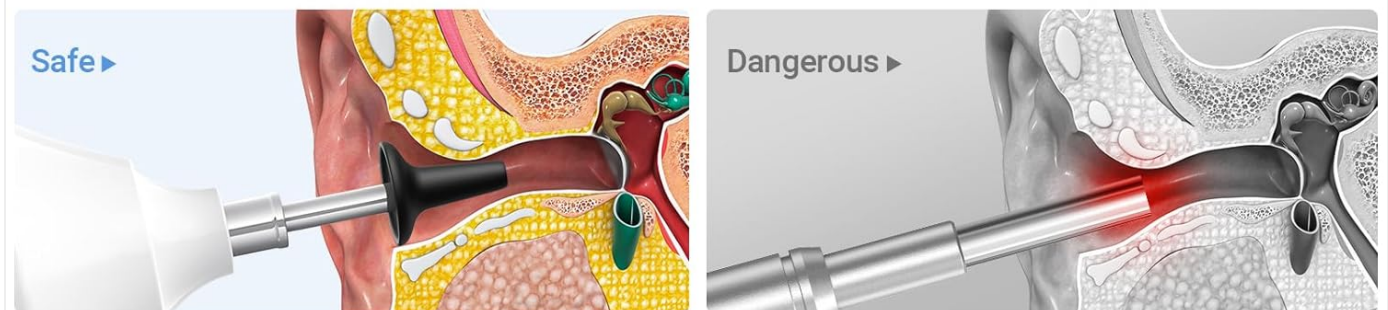


Figure 2.1: Safe and Dangerous Ear Canal Insertion

3. PACKAGE CONTENTS

Verify that all items are present in the package:

- SA200S Digital Otoscope with Screen
- Ear Picks (x4)
- Specula (x5)
- Alcohol Pads
- Q-tips
- 8GB Memory Card
- USB Cable (Type-C)
- User Manual

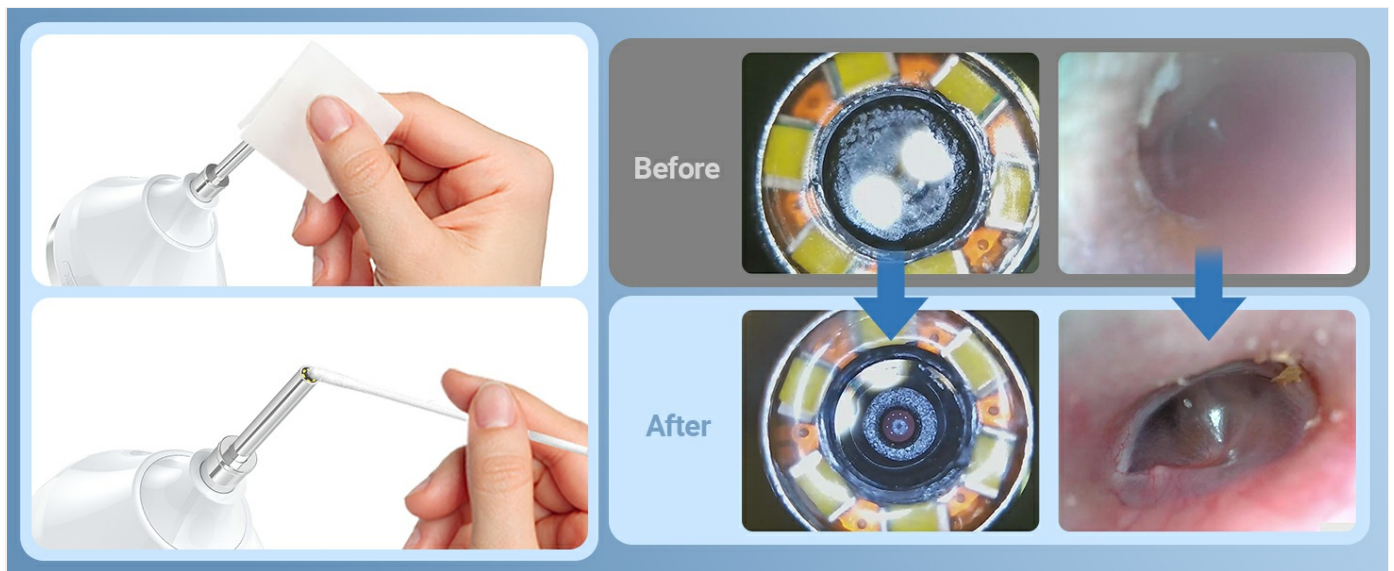


Figure 3.1: Package Contents

4. PRODUCT OVERVIEW

The ScopeAround SA200S Digital Otoscope is an all-in-one device designed for convenient ear examination. It features a high-resolution camera and an integrated display for direct viewing.



Figure 4.1: ScopeAround SA200S Digital Otoscope

4.1 Device Components



Figure 4.2: Labeled Components of the Otoscope

1. **Navigation Buttons UP:** Used to navigate menus or adjust settings.
2. **Navigation Buttons Down:** Used to navigate menus or adjust settings.
3. **Memory Card Slot:** For inserting the 8GB memory card (included).
4. **Photo / Video Button:** Press to capture photos or start/stop video recording.
5. **Power Button / LED Light Adjustment:** Long press to power on/off. Short press to cycle through LED brightness levels.
6. **1.85" IPS LCD Screen:** Integrated display for real-time viewing.
7. **Settings Button:** Access device settings.
8. **OK Button:** Confirm selections in menus.
9. **Otoscope Camera:** The camera probe for ear canal inspection.
10. **Type-C Port:** For charging and data transfer.

5. SETUP

5.1 Charging the Device

Before first use, fully charge the otoscope. Connect the provided USB Type-C cable to the device's Type-C port and a compatible USB power adapter (not included). The charging indicator will show the charging status. A full charge provides approximately 3 hours of working time.

ScopeAround
SA200S

Ultra-long-lasting Rechargeable Battery





1380 mAh
Capacity



3 hours
Working Time

Please note: the built-in battery pack is non-removable.

Figure 5.1: Charging and Battery Life

5.2 Attaching Accessories

Select an appropriate speculum and ear pick. Gently attach the chosen speculum to the tip of the otoscope camera. If using an ear pick, ensure it is securely fitted over the camera tip, inside the speculum, before insertion into the ear.

5.3 Powering On/Off

- To power on: Long press the **Power Button** (5) until the screen illuminates.
- To power off: Long press the **Power Button** (5) again until the screen turns off.

5.4 Connecting to the App (Optional)

For additional features and a larger viewing experience, you can connect the otoscope to your smartphone or tablet via Wi-Fi.

1. **Download the App:** Scan the QR code provided in the manual or on the device packaging, or search for "Smart Otoscope" in the Apple App Store or Google Play Store. You can also visit gto.so/smart-otoscope.

2. **Power On Otoscope:** Long press the power button on the otoscope to turn it on.
3. **Connect Wi-Fi:** On your smartphone or tablet, go to Wi-Fi settings and connect to the network named "Smart Otoscope_XXX". The default password is **55556666**.
4. **Launch App:** Open the "Smart Otoscope" app. The live view from the otoscope camera should appear.

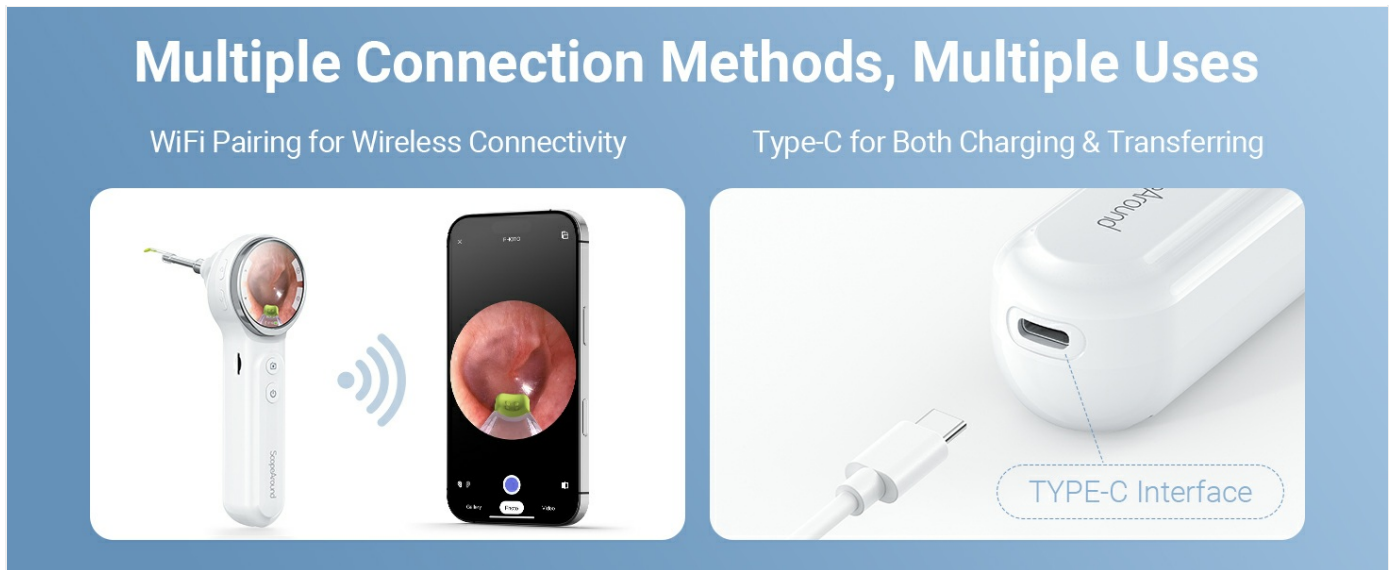


Figure 5.2: Wi-Fi Connection Steps

Note: Once connected to the app, you can operate the device and view the feed on your phone.

6. OPERATING INSTRUCTIONS

6.1 Basic Ear Examination

1. Ensure a clean speculum is attached to the otoscope camera.
2. Gently pull the outer ear up and back to straighten the ear canal.
3. Carefully insert the speculum tip into the ear canal while observing the integrated 1.85-inch IPS screen. Do not force the device.
4. Adjust the angle and depth slowly to get a clear view of the ear canal and eardrum.

Digital Visual Otoscope with Screen

Monitoring Ear Canal Health at Home



Photo
Taking



Video
Recording



1.85-in IPS
LCD Screen

Figure 6.1: Self-Examination with Integrated Screen

6.2 Adjusting LED Lights and Brightness

The otoscope features 6 adjustable LED lights with 3 brightness settings for optimal visibility.

- Short press the **Power Button** (5) to cycle through the 3 brightness levels.

ScopeAround

SA200S

720P HD Ear Camera with 6 LED Lights

0.39 - 1.18 INCH
Focal Distance

78°
Field of View



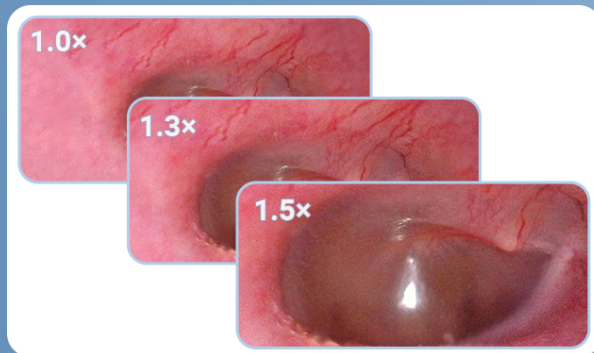
Figure 6.2: Camera Specifications and Brightness Settings

6.3 Magnification Levels

The device supports 3 levels of magnification (1.0x, 1.3x, 1.5x) for detailed viewing. Use the **Navigation Buttons UP/DOWN** (1, 2) to adjust magnification.

Designed for Comprehensive Ear Examinations

Adjustable Magnification for Detailed View



180° Image Rotating for Flexible Positioning

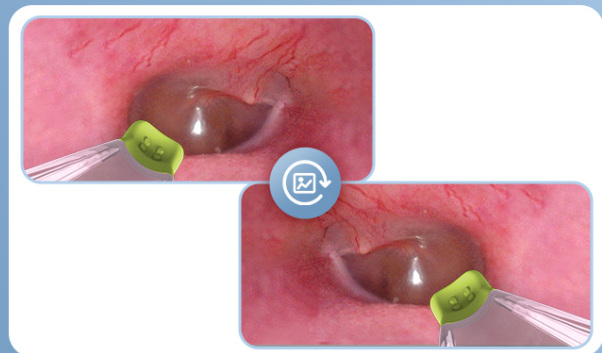


Figure 6.3: Adjustable Magnification and Image Rotation

6.4 Photo and Video Capture

The otoscope allows you to capture images and record videos directly to the included 8GB memory card.

- To take a photo: Press the **Photo / Video Button** (4) once.
- To record a video: Long press the **Photo / Video Button** (4) to start recording. Long press again to stop recording.

2 Viewing Modes for Your Needs

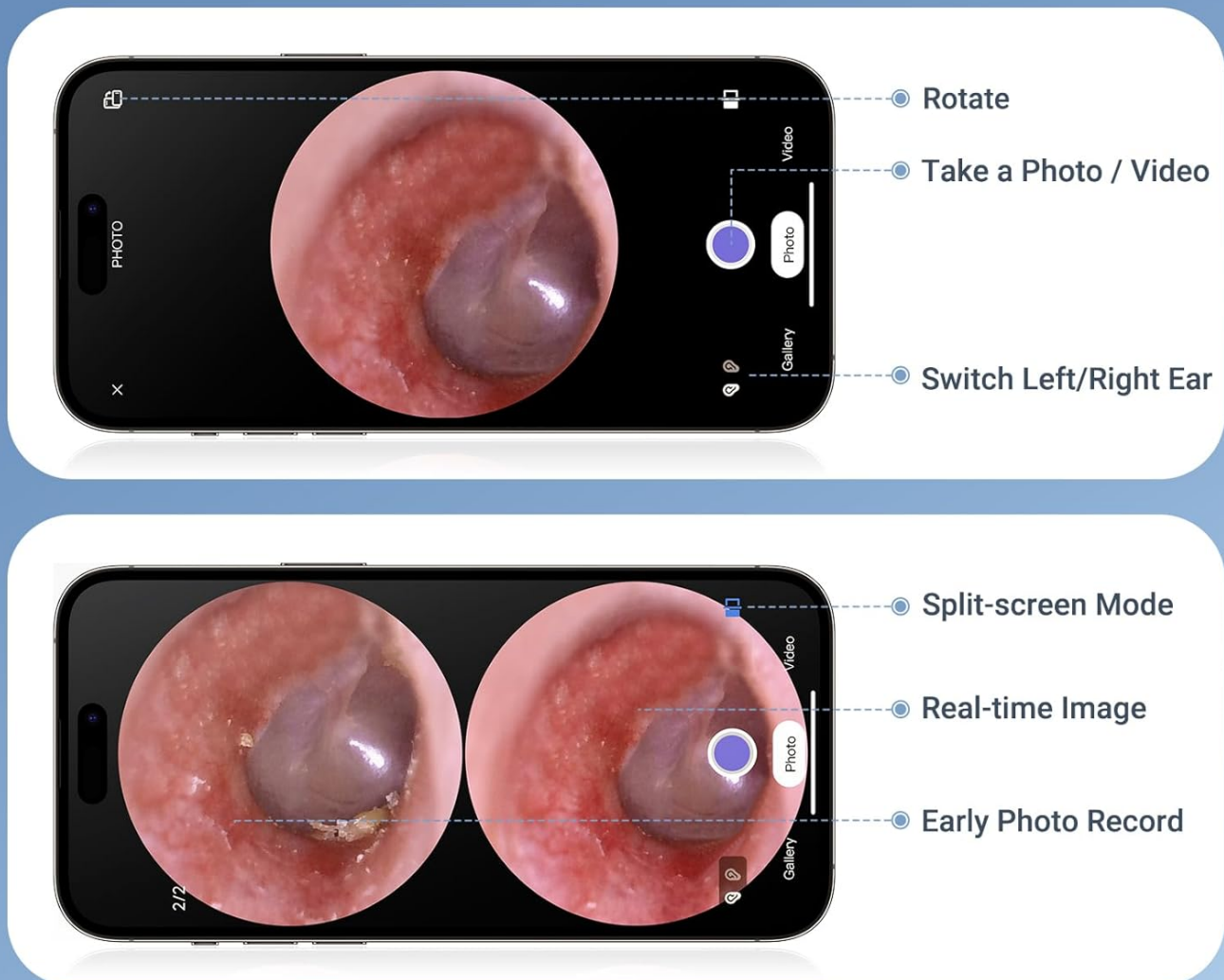


Figure 6.4: Photo and Video Capture Interface (App View)

6.5 Transferring Files

To transfer captured photos and videos to a computer:

- Connect the otoscope to your computer using the provided USB Type-C cable.
- The device should appear as a removable storage device. You can then access the files on the 8GB memory card.
- Alternatively, remove the 8GB memory card from the slot (3) and insert it into a compatible card reader connected to your computer.



Figure 6.5: File Transfer for Sharing Insights

7. MAINTENANCE AND CLEANING

Proper maintenance ensures the longevity and hygiene of your otoscope.

- **Cleaning the Lens:** Use the provided Q-tips and alcohol pads to gently clean the camera lens before and after each use. Ensure no residue remains.
- **Cleaning Accessories:** Wash the reusable ear picks and specula with soap and water, then sterilize them with alcohol pads. Allow them to dry completely before storage or reuse.
- **Device Body:** Wipe the main body of the otoscope with a soft, dry cloth. Do not immerse the device in water.
- **Storage:** Store the device in a cool, dry place, away from direct sunlight and extreme temperatures.



Figure 7.1: Cleaning the Otoscope Lens

8. TROUBLESHOOTING

Problem	Possible Cause	Solution
Device does not power on.	Low battery.	Charge the device fully using the provided USB cable.
No image on screen.	Device not powered on; Camera lens obstructed.	Ensure device is powered on. Check and clean the camera lens.
Image is blurry or unclear.	Dirty lens; Incorrect focal distance; Magnification setting.	Clean the camera lens. Adjust the distance from the ear canal. Adjust magnification using navigation buttons.
Cannot connect to Wi-Fi.	Incorrect Wi-Fi password; Device not in pairing mode; App issue.	Ensure the otoscope is powered on. Verify the Wi-Fi password (55556666). Restart the otoscope and your phone/tablet. Reinstall the app if necessary.
Cannot save photos/videos.	Memory card full or faulty; Memory card not inserted.	Check if the 8GB memory card is correctly inserted. Ensure there is sufficient space. Try formatting the card (if data is backed up) or using a different card.

9. SPECIFICATIONS

Feature	Detail
Model Name	SA200S
Screen Size	1.85-inch IPS LCD
Camera Resolution	720p HD
Lens Diameter	3.9mm Ultra-thin Lens
Light Source	6 LED Lights (3 brightness settings)
Focal Distance	0.39 - 1.18 inches
Real Angle of View	78 Degrees
Magnification	Up to 1.5x (1.0x, 1.3x, 1.5x)
Battery Capacity	1380mAh Lithium Polymer
Working Time	Approximately 3 hours
Connectivity	Wi-Fi (for app connection)
Storage	8GB Memory Card (included)
Charging Port	Type-C
Compatible Devices	Android/iPhone smartphones and tablets (Not compatible with Macbook & Windows PC)
Item Weight	12 ounces
Dimensions	7.52 x 4.61 x 2.68 inches (Package)
Material	Plastic
Color	White

10. WARRANTY AND SUPPORT

ScopeAround is committed to providing high-quality products and customer satisfaction. For any questions, technical support, or warranty inquiries, please contact our US-based after-sales support team. Contact information can typically be found on the product packaging, the official ScopeAround website, or through your purchase platform.

