

VEVOR BT-BPT190BL

VEVOR Bathroom Exhaust Fan User Manual

Model: BT-BPT190BL | Brand: VEVOR

1. INTRODUCTION

Thank you for choosing the VEVOR Bathroom Exhaust Fan. This high-efficiency ventilation fan is designed to provide effective air circulation and lighting for your bathroom or other suitable indoor spaces. Featuring a quiet operation, adjustable LED lighting, and remote control functionality, it enhances comfort and convenience. This manual provides essential information for safe installation, operation, and maintenance of your new exhaust fan.



Image 1.1: VEVOR Bathroom Exhaust Fan with included remote control.

2. SAFETY INFORMATION

Please read all safety instructions carefully before installation and operation. Failure to follow these instructions may result in electric shock, fire, or serious injury.

- Always disconnect power at the circuit breaker before installing or servicing the fan.
- Installation must be performed by a qualified electrician in accordance with all local and national electrical codes.
- Ensure the fan is properly grounded.
- Do not install this fan in a shower or tub enclosure unless specifically rated for such use.
- Do not use this fan with any solid-state speed control device other than the provided remote control.
- Ensure all wiring connections are secure and properly insulated.
- Keep children away from the installation area.
- This fan is designed for general ventilating use only. Do not use to exhaust hazardous or explosive materials and vapors.

3. PACKAGE CONTENTS

Verify that all components are present and undamaged upon opening the package. If any items are missing or damaged, contact VEVOR customer support.

- 1 x VEVOR Bathroom Exhaust Fan
- 1 x Remote Control
- 1 x Remote Control Holder
- Mounting Screws and Wall Anchors
- User Manual (this document)



Image 3.1: Main components of the VEVOR Bathroom Exhaust Fan package.

4. SPECIFICATIONS

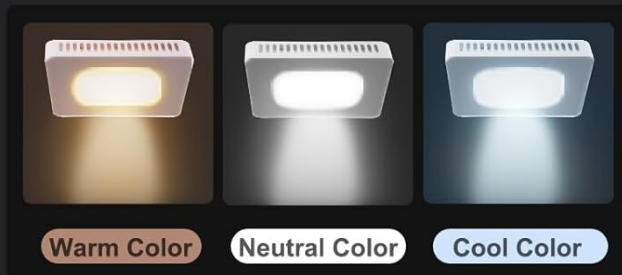
Technical specifications for the VEVOR Bathroom Exhaust Fan (Model BT-BPT190BL):

Feature	Specification
---------	---------------

Feature	Specification
Model Name	Bathroom Vent Fan
Model Number	BT-BPT190BL
Air Flow Capacity	110 CFM (Cubic Feet Per Minute)
Noise Level	33 dB (1.5 Sones)
Power Source	AC
Voltage	120V
Wattage	28 watts
LED Luminous Flux	900 LM
LED Color Temperature	3000K / 4000K / 5000K (Adjustable)
Number of Fan Speeds	6
Control Method	Remote Control
Product Dimensions (L x W x H)	11.4"D x 10"W x 6.7"H (290 x 255 x 170 mm)
Ceiling Cutout Dimensions	7.68 x 7.6 in (195 x 193 mm)
Item Weight	5.95 lbs (2.7 kg)
Primary Material	Galvanized Steel Housing
Indoor/Outdoor Usage	Indoor

ADJUSTABLE LED LIGHTING

Soft, Glare-Free
Illumination



 **900lm**
 Color Temperature
3000K-4000K-5000K



Image 4.1: Key dimensions and specifications of the exhaust fan.

5. INSTALLATION

This exhaust fan is designed for ceiling-mounted ventilation and features a cut-free design for easier installation. No attic access is required for the main installation. Always ensure power is disconnected before beginning.

Installation Steps:

- 1. Prepare Opening:** Create a ceiling opening of approximately 7.68 x 7.6 inches (195 x 193 mm). Ensure there is sufficient space above the ceiling for the fan housing.
- 2. Secure Fan Housing:** Secure the exhaust fan housing to a ceiling joist or wall pillar using appropriate mounting hardware. Ensure it is firmly attached to prevent vibration.
- 3. Connect Wiring:** Connect the electrical wiring. Match the corresponding wire colors (e.g., connect the fan's white wire to the house's white wire, black to black, and green/bare to ground). Use approved wire connectors and ensure all connections are secure and insulated.
- 4. Install Ducting:** Attach a 4-inch exhaust duct to the fan's outlet. Secure the duct with tape or clamps to ensure an airtight seal. (Exhaust duct is not included).

5. **Attach Panel and Light:** Connect the lighting wire from the fan housing to the light panel. Carefully snap the decorative panel onto the fan housing, ensuring it is flush with the ceiling.
6. **Restore Power:** Once installation is complete and all connections are secure, restore power at the circuit breaker.

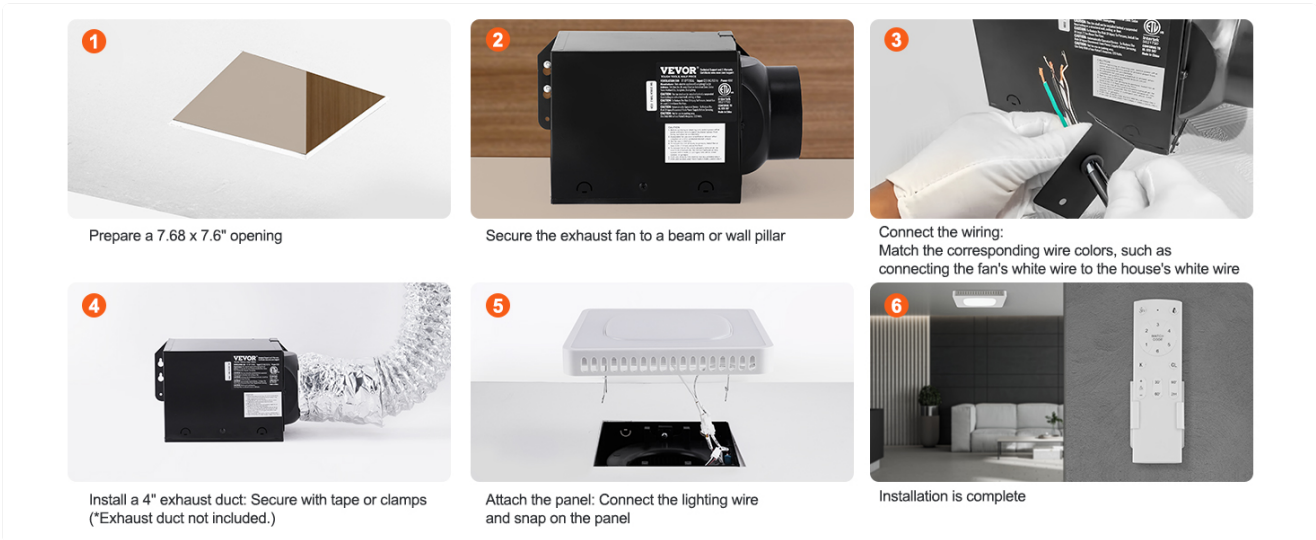


Image 5.1: Visual guide for the installation process.

6. OPERATING INSTRUCTIONS

The VEVOR Bathroom Exhaust Fan is controlled by the included wireless remote. Ensure the remote has working batteries (not included, typically 2x AAA). The remote allows control over fan speed, light settings, and timer functions.

SMART REMOTE COMPANION

Master 6 Key Functions in One Hand

1 Fan ON/OFF

2 Light ON/OFF

3 Airflow Speed 1-6

4 Light Color: 3000K/4000K/5000K

5 Light Brightness

6 Timing: 0.5h/1h/1.5h/2h



Image 6.1: Remote control layout and key functions.

Remote Control Functions:

- **Fan ON/OFF:** Press the fan icon button (1) to turn the fan on or off.
- **Light ON/OFF:** Press the light bulb icon button (2) to turn the LED light on or off.
- **Airflow Speed (1-6):** Use the numbered buttons (3) to select the desired fan speed from 1 (lowest) to 6 (highest).
- **Light Color Temperature (K):** Press the 'K' button (4) to cycle through the available color temperatures: 3000K (Warm White), 4000K (Neutral White), and 5000K (Cool White).
- **Light Brightness (+/-):** Use the '+' and '-' buttons (5) to adjust the brightness of the LED light.
- **Timing (Timer):** Press the timer buttons (6) to set the fan to run for a specific duration: 0.5h (30 minutes), 1h (60 minutes), 1.5h (90 minutes), or 2h (120 minutes). The fan will automatically turn off after the set time.
- **Match Code:** If the remote control does not pair with the fan, refer to the 'Match Code' instructions in the full user manual for pairing procedures.

Smart Mode (Humidity-Based Auto Airflow):

Upon startup, the fan may operate in a smart mode that adjusts airflow based on humidity levels. If humidity is

above 70%, the fan will operate at its maximum 110 CFM. If humidity is below 70%, it will operate at a minimum of 80 CFM. This feature helps maintain optimal humidity levels automatically.

LIGHT AND VENTILATION WITH FULL CONTROL

Adjustable LED Lights and 6-Speed Airflow

Cool Color Neutral Color Warm Color

3000K / 4000K / 5000K
Adjustable Color Temps

1 2 3 4 5 6
Min Max

80-110 CFM 6-speed
Adjustable Airflow

Separate Fan and Light Control, with 0.5h, 1h, 1.5h, 2h Timers

Image 6.2: Visual representation of adjustable light colors and fan speeds.

7. MAINTENANCE

Regular maintenance ensures optimal performance and longevity of your exhaust fan. Always disconnect power before performing any maintenance.

- **Cleaning the Grille/Cover:** Periodically remove the decorative grille/cover and wipe it with a soft, damp cloth. Do not use abrasive cleaners or solvents.
- **Cleaning the Fan Blades:** If accessible, gently wipe the fan blades with a damp cloth to remove dust and debris. Be careful not to bend or damage the blades.
- **Motor Lubrication:** The fan motor is permanently lubricated and does not require additional oiling.
- **Ductwork Inspection:** Annually inspect the ductwork for any blockages, kinks, or disconnections that could impede airflow.

8. TROUBLESHOOTING

Refer to the following table for common issues and their potential solutions.

Problem	Possible Cause	Solution
Fan does not turn on.	No power; Remote control battery low/dead; Remote not paired; Wiring issue.	Check circuit breaker; Replace remote batteries; Re-pair remote (refer to full manual); Check wiring connections (with power off).
Light does not turn on.	No power; Remote control battery low/dead; Wiring issue.	Check circuit breaker; Replace remote batteries; Check wiring connections (with power off).
Fan is noisy or vibrates.	Loose mounting; Debris in fan blades; Damaged blades; Ductwork obstruction.	Ensure fan is securely mounted; Clean fan blades; Inspect for damage; Check ductwork for obstructions.
Poor airflow.	Ductwork obstruction/kink; Fan blades dirty; Fan speed set too low.	Check and clear ductwork; Clean fan blades; Increase fan speed using remote.
Remote control not responding.	Low/dead batteries; Not paired; Obstruction between remote and fan.	Replace batteries; Re-pair remote; Ensure clear line of sight.

9. WARRANTY AND SUPPORT

VEVOR products are designed for durability and performance. For warranty information, technical support, or to register your product for an e-warranty certificate, please visit the official VEVOR support website:

www.vevor.com/support

Please have your model number (BT-BPT190BL) and purchase information ready when contacting support.