

## thinkcar 689BT + Plus S6

# THINKSCAN 689BT + Plus S6 Car Scanner Diagnostic Tool User Manual

*Model: 689BT + Plus S6 | Brand: thinkcar*

## 1. SETUP

---

### 1.1 Unboxing and Initial Inspection

- Verify all components are present: THINKSCAN 689BT + Plus S6 unit, OBDII dongle, charging cable.
- Inspect the device for any physical damage.

### 1.2 Charging the Device

Connect the device to a power source using the provided charging cable. Ensure the device is fully charged before first use for optimal performance.

### 1.3 Connecting to the Vehicle

Locate the OBDII port in your vehicle, typically under the dashboard on the driver's side. Plug the OBDII dongle into the port. The dongle will illuminate to indicate a successful connection.



Image: The THINKSCAN 689BT + Plus S6 diagnostic tool with its accompanying OBDII dongle, ready for connection to a vehicle.



Image: Illustrates the 'One-Click Start' feature, showing automatic VIN detection, software upgrades, auto scan, and diagnostic report generation.

## 2. OPERATING THE DEVICE

### 2.1 Powering On and Initializing

Press and hold the power button to turn on the device. The system will boot up and display the main menu.

### 2.2 AutoSearch Function

Select 'AutoSearch' from the main menu. This function automatically identifies the vehicle's brand, model, year, and other relevant information, providing quick access to the vehicle's system for

diagnostics.

## 2.3 Diagnostic Functions

The THINKSCAN 689BT + Plus S6 offers comprehensive diagnostic capabilities:

- **Full OBDII Functions:** Access all 10 OBDII test modes for complete engine diagnostics.
- **System Diagnostics:** Diagnose ABS (Anti-lock Braking System), SRS (Supplemental Restraint System), TCM (Transmission Control Module), and ECM (Engine Control Module) systems.
- **Read Fault Codes:** Retrieve Diagnostic Trouble Codes (DTCs) to identify issues.
- **Clear Fault Memory:** Erase DTCs after repairs are completed.
- **Read Data Stream:** View real-time data parameters from various sensors.
- **Actuation Test:** Perform active tests on vehicle components.
- **Special Functions:** Access advanced diagnostic features.



Image: Highlights the 99.9% accuracy for scanning Engine, ABS, Airbag, and Transmission systems, emphasizing the benefit of WiFi connection for diagnostics.



Image: Shows the device displaying live data streams and on-board monitor test results, crucial for in-depth diagnostics of various vehicle parameters.

### 3. MAINTENANCE FUNCTIONS

---

The THINKSCAN 689BT + Plus S6 includes 34 service functions for various maintenance tasks. Key functions include:

- **Oil Reset:** Reset the oil life reminder after an oil change.
- **SAS (Steering Angle Sensor) Reset:** Calibrate the steering angle sensor.
- **Brake Reset:** Reset the electronic parking brake after brake pad replacement.
- **TPMS (Tire Pressure Monitoring System) Reset:** Reset tire pressure sensors.
- **ETS (Electronic Throttle System) Reset:** Clear learned values for the electronic throttle.
- **Air/Fuel Ratio Reset:** Set or learn Air/Fuel parameters.
- **ABS Bleeding:** Perform ABS brake bleeding procedures.
- **Airbag Reset:** Reset airbag crash data.
- **AdBlue Reset:** Reset AdBlue system.

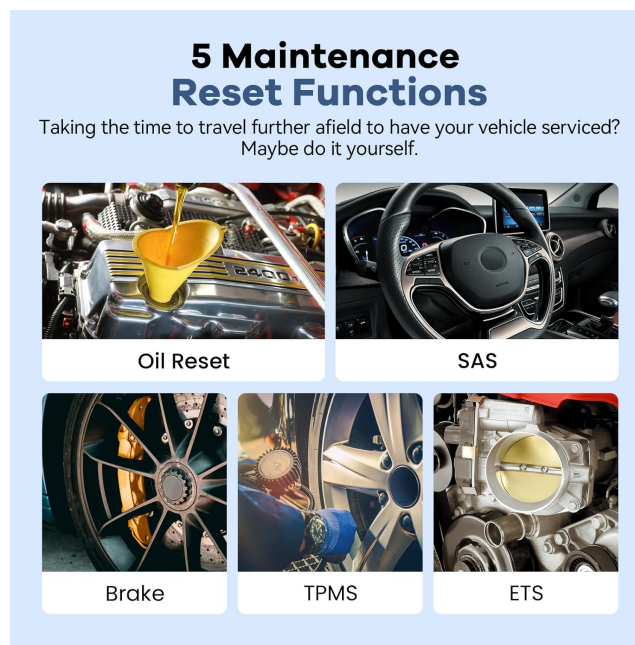


Image: Depicts five common maintenance reset functions: Oil Reset, SAS, Brake, TPMS, and ETS, highlighting the DIY aspect of the tool.



Image: Shows the process of turning off engine, SRS, ABS, and TCM fault lights with a single click after vehicle faults are repaired.

## 4. SOFTWARE UPDATES

The THINKSCAN 689BT + Plus S6 offers lifetime free software updates. To update the device:

1. Ensure the device is connected to a stable Wi-Fi network.
2. Navigate to the 'Upgrade' section on the main menu.
3. Choose the desired updates and click 'Upgrade'. The device will download and install the latest versions to ensure optimal diagnostic results.

## 5. TROUBLESHOOTING

### 5.1 Common Issues and Solutions

- **Device not powering on:** Ensure the battery is charged. Connect to a power source and try again.
- **No communication with vehicle:** Verify the OBDII dongle is securely plugged into the vehicle's OBDII port and the vehicle's ignition is on. Check the Bluetooth connection between the main unit and the dongle.
- **Inaccurate readings:** Ensure the software is up-to-date. Perform a system reset if necessary.

### 5.2 Online Service and Feedback

For advanced troubleshooting or specific vehicle issues, utilize the online service feature. You can submit feedback or questions directly to thinkcar support. The system allows for communication and provides a QR code to transfer conversations to your mobile phone for convenience.



Image: Illustrates the DTCs Lookup and Online Feedback feature, allowing users to check fault code meanings and send problems to engineers for assistance.

## 6. SPECIFICATIONS

Feature	Detail
Brand	thinkcar
Model	THINKSCAN 689BT + Plus S6
Diagnostic Capabilities	Full OBDII, ABS/SRS/TCM/ECM
Service Functions	34+ Maintenance Services (e.g., Oil Reset, SAS, Brake, TPMS, ETS)
Connectivity	Bluetooth (for dongle), Wi-Fi (for updates)
Updates	Lifetime Free Updates
Display	5-inch Touch Screen

## 7. WARRANTY & SUPPORT

For warranty information and technical support, please refer to the official thinkcar website or contact their customer service directly. The device offers online feedback functionality for direct communication with support staff.



Image: Shows two mechanics reviewing a diagnostic report, emphasizing the user-friendly graphing and reporting features, with options to print, email, or share via Bluetooth.

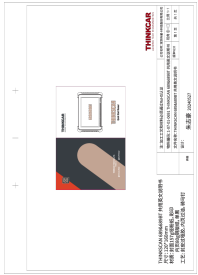
## Related Documents - 689BT + Plus S6

	<p><a href="#">THINKSCAN 662 Quick Start Manual</a></p> <p>A quick start guide for the THINKSCAN 662, an intelligent diagnostic device powered by Android 8.1. This manual covers product overview, components, technical specifications, usage instructions, function descriptions, Q&amp;A, and warranty terms.</p>
	<p><a href="#">THINKSCAN Plus User Manual and Quick Start Guide</a></p> <p>This document provides a comprehensive user manual and quick start guide for the THINKSCAN Plus diagnostic tool, covering initial setup, functions, maintenance resets, Q&amp;A, and warranty information.</p>
	<p><a href="#">THINKSCAN Plus User Manual and Guide</a></p> <p>This document provides a comprehensive guide to the THINKSCAN Plus diagnostic tool, covering quick start, functions, Q&amp;A, and warranty information. It details various maintenance and reset functions, diagnostic procedures, and system settings for automotive technicians.</p>



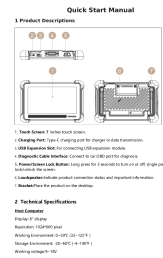
[THINKSCAN 689 & 689BT Diagnostic Tool Quick Start Manual](#)

Comprehensive quick start manual for THINKCAR THINKSCAN 689 and 689BT automotive diagnostic tools. Learn about product features, technical specifications, how to connect and use the device, perform full system diagnostics, maintenance resets, software upgrades, and access customer support. Includes troubleshooting Q&A and warranty information for these OBDII scanners.



[THINKSCAN 689 & 689BT Quick Start Manual - Automotive Diagnostic Tool](#)

The THINKSCAN 689 & 689BT Quick Start Manual provides comprehensive instructions for operating the THINKCAR automotive diagnostic tool. Learn about product features, technical specifications, how to connect and use the device for full system diagnosis, software upgrades, and maintenance functions. This guide covers OBDII diagnostics, fault code reading, real-time data streams, and accessing historical reports for efficient vehicle troubleshooting and maintenance.



[THINKCAR THINKSCAN Quick Start Manual: Features, Usage, and Specifications](#)

Comprehensive quick start guide for the THINKCAR THINKSCAN diagnostic tool. Learn about product features, technical specifications, how to use it for vehicle diagnosis, maintenance, upgrades, and access support.