



[Manuals.plus](#) /

› [ACEMAGIC](#) /

› ACEMAGIC AX17 17.3-inch Laptop User Manual

ACEMAGIC AX17

ACEMAGIC AX17 17.3-inch Laptop User Manual

Model: AX17

1. INTRODUCTION

This manual provides essential information and instructions for the ACEMAGIC AX17 17.3-inch Laptop. Please read this guide thoroughly before using your device to ensure proper operation and to maximize its lifespan. The ACEMAGIC AX17 is designed for various tasks, offering a large display, efficient performance, and versatile connectivity.

AMD R3 4300U
 4 cœurs, 4 threads
 Cache L3 de 4M, jusqu'à 3,70 GHz



Écran IPS FHD de 17,3 pouces
 Résolution 1920*1080




Batterie de 62,7Wh
 Facile à manipuler, à tout moment, n'importe où



Cache de caméra
 Protégez votre vie privée et votre sécurité en tout temps



Adaptateur 65w
 Interface haute vitesse sans stress

Architecture thermique 4.0
 Faible consommation d'énergie, fonctionnement silencieux (TDP 15-28W)



Système préinstallé



512GB M.2 SSD
 (Jusqu'à 4TB PCIe NVMe SSD)



16GB DDR4
 (Mémoire jusqu'à 64GB RAM)

Figure 1: ACEMAGIC AX17 17.3-inch Laptop (Closed View)

2. SETUP

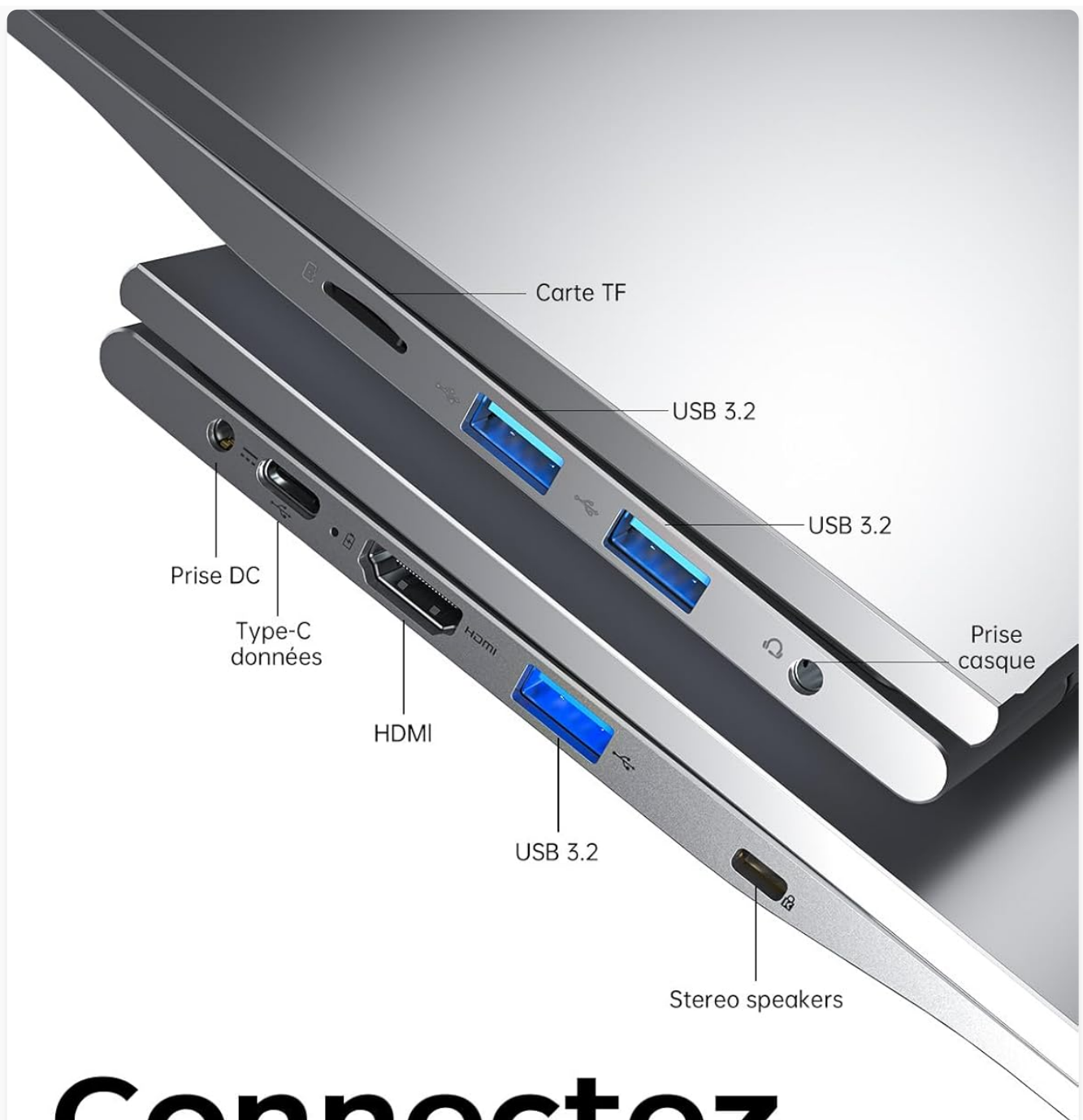
2.1 Unboxing and Initial Power On

Upon unboxing, ensure all components are present: the ACEMAGIC AX17 laptop, power adapter, and documentation. Connect the power adapter to the laptop's DC jack and then to a power outlet. Press the power button to turn on the laptop. Follow the on-screen instructions for initial Windows setup.

2.2 Connecting Peripherals

The laptop features multiple ports for connecting external devices:

- **USB 3.2 Ports (x2):** For high-speed data transfer with compatible USB devices.
- **USB 2.0 Port (x1):** For standard USB devices.
- **HDMI Port:** Connect to external monitors or projectors.
- **3.5mm Headphone Jack:** For audio output to headphones or external speakers.
- **TF Card Slot:** For expanding storage or transferring data from memory cards.
- **Type-C Data Port:** For data transfer with compatible USB-C devices.



Connectez facilement tout

Conçu pour répondre à vos besoins
personnels et professionnels

Figure 2: Laptop Connectivity Ports

2.3 Network Connection

- **Wi-Fi:** Connect to wireless networks using the integrated 802.11a/b/g/n/ac Wi-Fi module. Access Wi-Fi settings through the operating system.
- **Ethernet:** For a stable wired internet connection, plug an Ethernet cable into the dedicated port.
- **Bluetooth 5.0:** Pair with compatible wireless devices such as headphones, mice, or keyboards.

Wireless Freedom, Fast Stable Connections

Bluetooth 5.2 and dual-band Wi-Fi. Stay effortlessly connected to your favorite devices and enjoy fast, stable connections.



Figure 3: Wireless Connectivity

2.4 Keyboard Layout

The laptop may come with a QWERTZ keyboard layout. For users preferring an AZERTY layout, silicone keyboard stickers are often provided to convert the layout visually. The operating system's keyboard settings can be adjusted to match the desired input layout.

3. OPERATING INSTRUCTIONS

3.1 Basic Functions

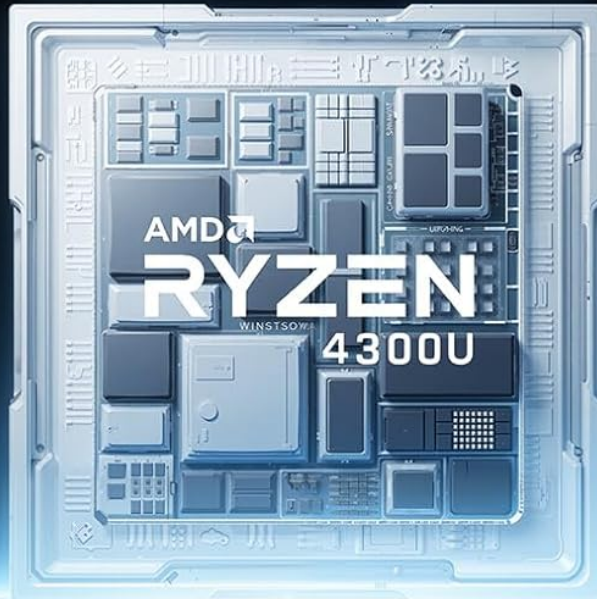
- **Power On/Off:** Press the power button to turn the laptop on. To shut down, use the operating system's power options.
- **Sleep Mode:** Close the lid or select 'Sleep' from the power options to put the laptop into a low-power state.

3.2 Display Features

The ACEMAGIC AX17 features a 17.3-inch Full HD (1920x1080) IPS display. The 180° hinge allows for flexible viewing angles, making it suitable for presentations or shared viewing.

Libérez une puissance extraordinaire.

Le puissant AMD Ryzen 3 est intégré avec une combinaison 4 cœurs/4 threads, utilisant l'architecture Zen 2 plus avancée et le processus de 7nm. Avec une vitesse d'horloge allant jusqu'à 3,70 GHz pour un travail et un jeu fluides.



4
Cores

4
Threads

4MB L3
Cache

15-28W
TDP

Performance monocœur

40%

AMD ryzen 3 4300U

Intel N100/N150

Performance multicœur

60%

AMD ryzen 3 4300U

Intel N100/N150

Figure 4: Immersive 17.3-inch Full HD Display

3.3 Webcam and Privacy

The integrated webcam is equipped with a physical privacy shutter. Slide the shutter to cover the camera lens when not in use to ensure privacy and security.

Webcam de confidentialité

Avec un interrupteur physique pour la protection de la vie privée, vous pouvez être confiant que votre espace personnel est toujours sécurisé.



ALLUMÉ



ÉTEINT

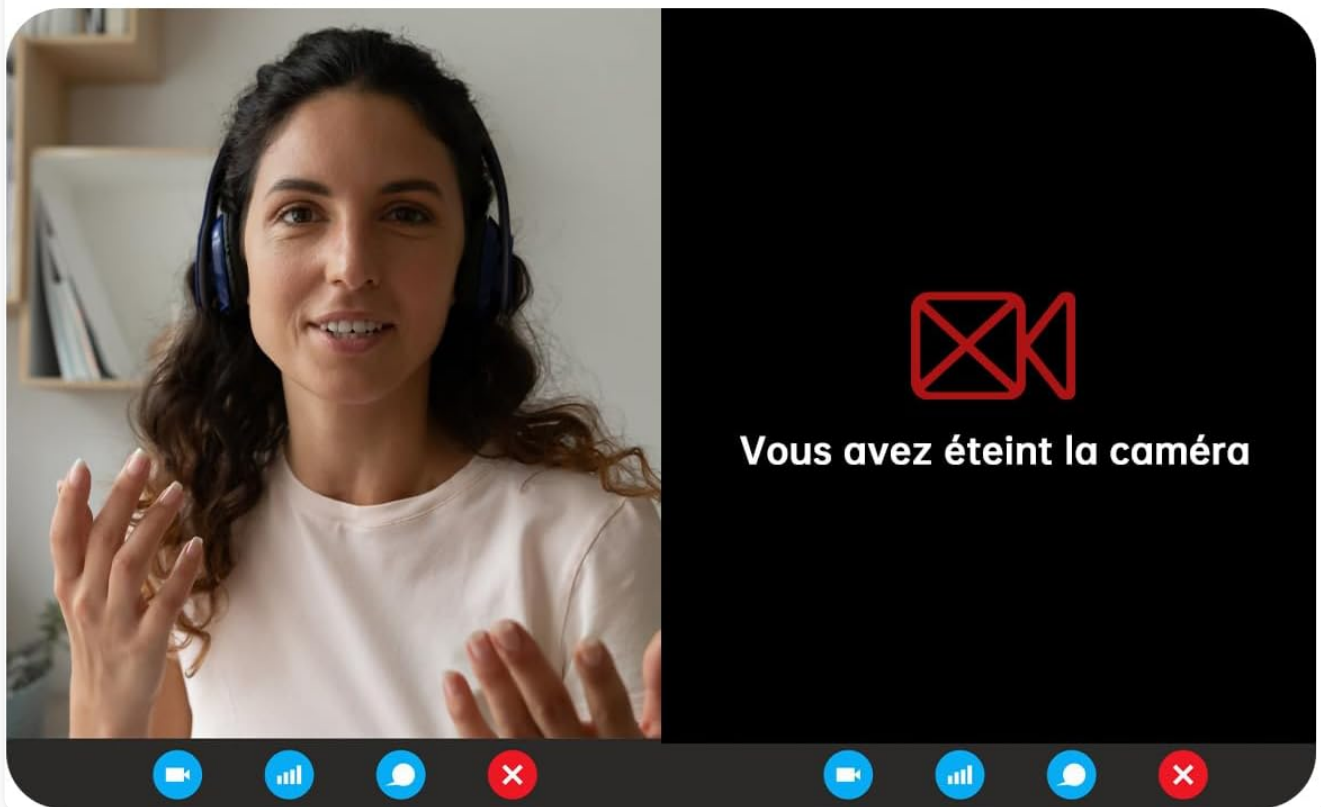


Figure 5: Webcam with Privacy Shutter

3.4 Battery Management

The laptop is powered by a 7.6V/5000mAh lithium-polymer battery, providing extended usage time. For optimal battery health, avoid fully discharging the battery frequently and store the laptop in a cool, dry place when not in use for extended periods.

Débarrassez-vous des soucis d'alimentation

Excellent gestion de l'énergie au niveau du système.
Dure toute la journée

🕒 5 Heures

🔋 5500MAH

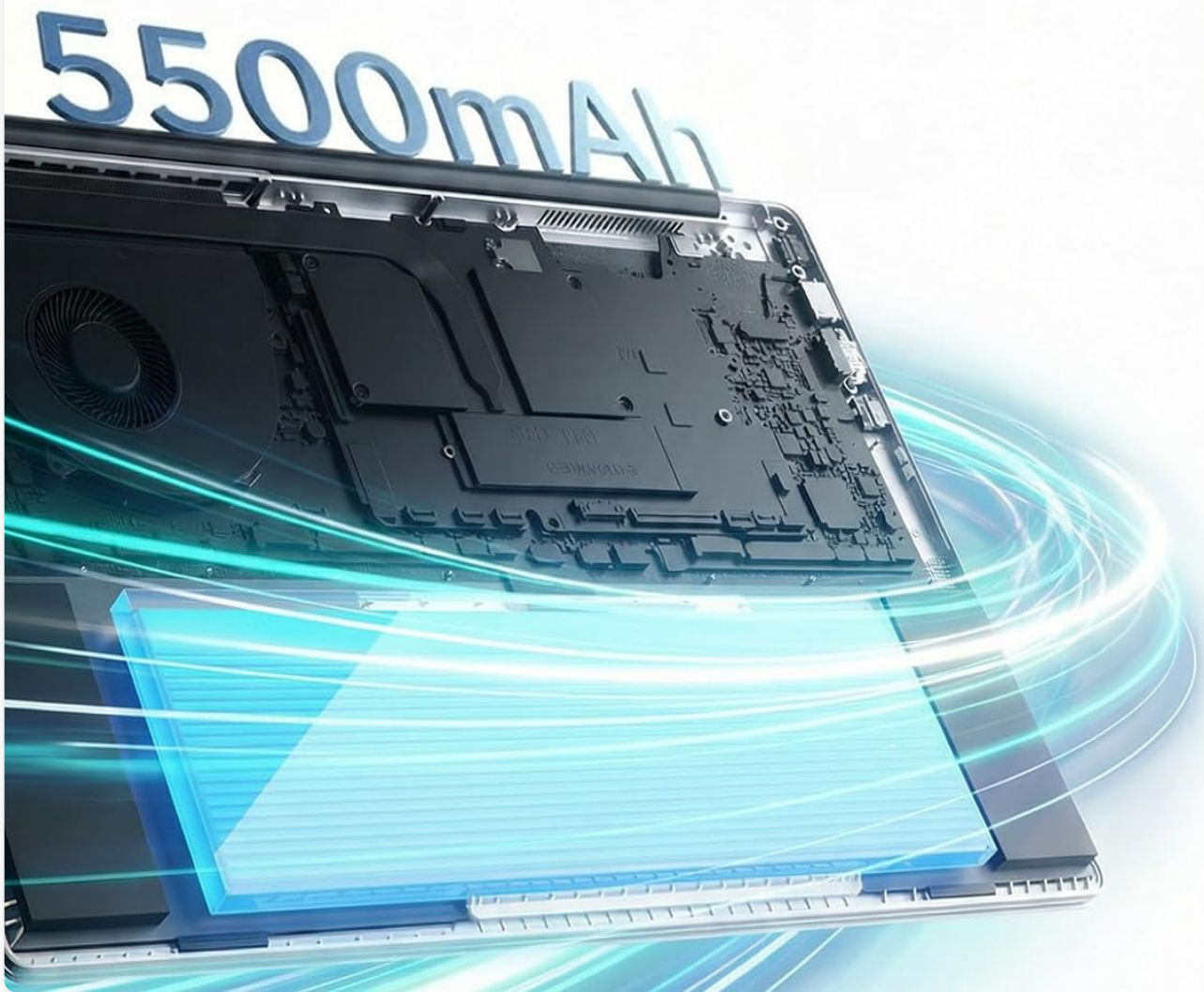


Figure 6: Laptop Battery and Cooling System

4. MAINTENANCE

4.1 Cleaning

- Use a soft, lint-free cloth to clean the screen and exterior surfaces.
- Avoid using harsh chemicals or abrasive materials.
- For the keyboard, use compressed air to remove dust and debris.

4.2 Software Updates

Regularly update your operating system and drivers to ensure optimal performance, security, and compatibility. Check for updates through Windows Update settings.

4.3 Storage Management

The laptop comes with a 512GB NVMe M.2 SSD. For additional storage, the system supports expansion up to 2TB. Regularly back up important data to external drives or cloud storage.

5. TROUBLESHOOTING

If you encounter issues with your ACEMAGIC AX17 laptop, refer to the following common solutions:

Problem	Possible Solution
Laptop does not power on	Ensure the power adapter is securely connected and the outlet is functional. Check battery charge level.
No display on screen	Ensure the laptop is powered on. Try connecting to an external monitor via HDMI to check if the issue is with the laptop screen.
Wi-Fi or Bluetooth not connecting	Check if Wi-Fi/Bluetooth is enabled in settings. Restart the laptop and your router/device. Update network drivers.
Slow performance	Close unnecessary applications. Check for background processes. Ensure sufficient free storage space on the SSD. Run a system scan for malware.
Keyboard input issues	Verify the correct keyboard layout is selected in operating system settings. Clean the keyboard.

For more complex issues or if the problem persists, please contact ACEMAGIC customer support.

6. SPECIFICATIONS

Key technical specifications for the ACEMAGIC AX17 laptop:

Feature	Detail
Brand	ACEMAGIC
Model Name	AX17
Screen Size	17.3 Inches
Screen Resolution	1920 x 1080 pixels (Full HD)
Display Technology	IPS LCD

Feature	Detail
Processor	AMD Ryzen 3 4300U (4 Cores, 4 Threads, up to 3.7 GHz)
RAM	16 GB DDR4
Storage	512 GB NVMe M.2 SSD (Expandable up to 2TB)
Graphics	Integrated Intel UHD Graphics
Operating System	Windows
Battery	7.6V/5000mAh Lithium-ion
Connectivity	Wi-Fi 802.11a/b/g/n&ac, Bluetooth 5.0, Ethernet
Ports	2x USB 3.2, 1x USB 2.0, HDMI, 3.5mm Headphone Jack, TF Card Slot, Type-C Data Port
Webcam	Integrated (with privacy shutter)
Dimensions (L x W x H)	34.7 x 24.7 x 1.7 cm
Color	Silver

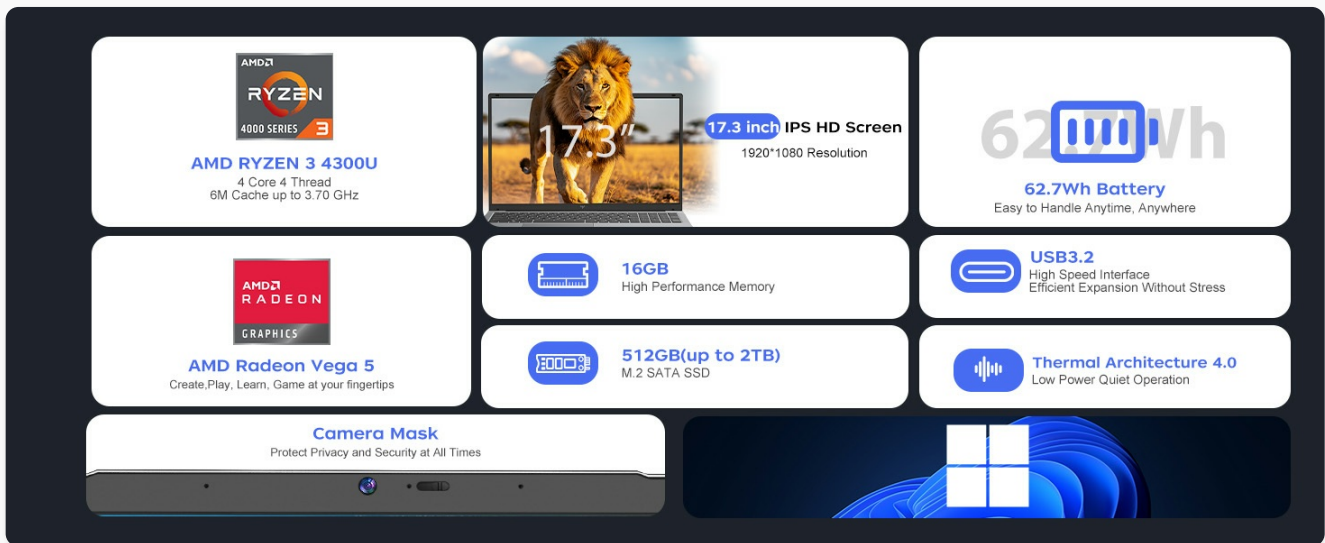


Figure 7: ACEMAGIC AX17 Feature Overview

7. WARRANTY AND SUPPORT

7.1 Warranty Information

The ACEMAGIC AX17 laptop comes with a 2-year product satisfaction guarantee. This warranty covers manufacturing defects and ensures product reliability. Please retain your proof of purchase for warranty claims.

7.2 Customer Support

For technical assistance, warranty inquiries, or any other support needs, please contact ACEMAGIC customer

service:

- **Email:** service@acemagic.com
- **Operating Hours:** Monday - Friday, 9:00 AM - 5:00 PM (GMT)

Offline maintenance services are also available. Please refer to the official ACEMAGIC website or contact support for details on service points.



Figure 8: ACEMAGIC Customer Support Information