

manuals.plus /

- › [Anlapus](#) /
- › [Anlapus C528 4MP Dual Lens Indoor Security Camera User Manual](#)

## Anlapus C528

# Anlapus C528 4MP Dual Lens Indoor Security Camera User Manual

Model: C528 | Brand: Anlapus

## INTRODUCTION

This manual provides detailed instructions for the setup, operation, and maintenance of your Anlapus C528 4MP Dual Lens Indoor Security Camera. Please read this manual thoroughly before using the product to ensure proper functionality and safety.



Image: The Anlapus C528 camera shown alongside a smartphone displaying its live feed and control options.

## PACKAGE CONTENTS

Verify that all items listed below are included in your package:

- 1 x Anlapus C528 WiFi Camera
- 1 x Quick Start Guide
- 1 x Mounting Template
- 1 x Mounting Plate
- 1 x Power Adapter
- 1 x USB Cable (Type-C)

- Mounting Screws and Wall Plugs

# Package Content



Image: A visual representation of all components included in the Anlapus C528 product package.

## PRODUCT OVERVIEW

Familiarize yourself with the various parts of the Anlapus C528 camera:



Image: Detailed diagram labeling the microphone, lenses, white light lamp, IR LED, speaker, memory card slot, reset button, press-to-call button, and Type-C USB charging port.

- **Microphone:** For audio input during two-way communication.
- **Lenses:** Dual lenses for comprehensive coverage.
- **White Light Lamp:** Provides illumination for color night vision.
- **IR LED:** Infrared emitter for black-and-white night vision.
- **Speaker:** For audio output during two-way communication and alarms.

- **Memory Card Slot:** Supports up to 256GB MicroSD card for local storage (not included).
- **Reset Button:** Used to reset the camera to factory settings (visible with downward-facing lens).
- **Press-to-Call Button:** Initiates a video call through the app.
- **Type-C USB (Charging Port):** For power supply.

## SETUP GUIDE

---

### 1. App Installation

Download the "Anlapus Smart" app from your device's app store (iOS App Store or Google Play Store).

### 2. Powering On

Connect the camera to a power source using the provided USB cable and power adapter. The camera will power on automatically.

### 3. Wi-Fi Connection (2.4GHz Only)

The Anlapus C528 camera supports 2.4GHz Wi-Fi networks only. Ensure your mobile device is connected to a 2.4GHz Wi-Fi network before proceeding.

1. Open the Anlapus Smart app and create an account or log in.
2. Tap the "+" icon to add a new device.
3. Select "Scan QR Code" or "Add Device Manually".
4. Follow the in-app instructions to connect the camera to your Wi-Fi network. This typically involves scanning a QR code displayed on your phone with the camera's lens.



*Image: A sequence of three smartphone screens illustrating the Wi-Fi setup process, including scanning the camera's QR code, entering Wi-Fi credentials, and confirming the connection.*

**Note:** If prompted for network details, the example Wi-Fi SSID is "chanpinbu001" and the password is "chanpinbu". This is for illustrative purposes; use your actual Wi-Fi credentials.

### 4. Mounting the Camera

The camera can be placed on a tabletop or mounted to a wall or ceiling using the provided mounting plate and screws.

1. Choose a suitable location for optimal viewing.
2. Use the mounting template to mark screw positions.
3. Drill holes, insert wall plugs if necessary, and secure the mounting plate with screws.

4. Attach the camera to the mounting plate.



*Image: Examples of the Anlapus C528 camera positioned on a flat surface, mounted on a wall, and inverted for ceiling mounting.*

## OPERATING INSTRUCTIONS

---

### 1. Dual-Lens & Dual-View Monitoring

The camera features two lenses: one fixed for a wide view and another rotatable for dynamic monitoring. The app allows you to switch between these views or display them side-by-side for comprehensive coverage.



# See More With Dual Lens

Perfect for wider coverage



*Image: The Anlapius C528 camera illustrating its dual lens functionality, capturing two distinct perspectives for broader surveillance.*

## 2. 360° Pan/Tilt Functionality

Control the camera's rotation (pan) and vertical angle (tilt) remotely via the app to monitor every corner of your space without blind spots.

## 360° Pan & Tilt Coverage

Easily control the camera to rotate and tilt for complete 360° coverage. Monitor every corner of your space without blind spots.



Image: The Anlapius C528 camera demonstrating its ability to pan and tilt, offering a full 360-degree view of an indoor environment.

### 3. Motion Detection & Auto Tracking

The camera can detect motion and automatically track moving objects. You will receive real-time alerts on your device when motion is detected. You can also define custom detection zones.

## Only Support 2.4GHz WiFi

2.4GHz WiFi is more cost-effective due to its strong signal penetration, wide compatibility and relatively low cost.

PS: Works with 2.4GHz Wi-Fi networks only (does not support 5GHz Wi-Fi).



Image: The Anlapius C528 camera's auto-tracking feature, showing a child in motion with detection frames around them.

### 4. Two-Way Audio & Gesture Calling

Utilize the built-in speaker and microphone for real-time two-way communication. The camera also supports a "One Touch Call" function via its physical button or a "Gesture Call" by making an "OK" gesture in front of the lens, initiating a video call through the app.



## Real-Time 2-Way Audio

With built-in speaker and microphone which allows you to communicate with your loved ones anywhere and anytime.



Image: Illustration of the camera's two-way audio feature, showing a child speaking through the camera and an adult responding via a smartphone.

## Auto-Tracking Human Detection

The Camera automatically detects and follows human movement, keeping it in focus at all times. Never miss suspicious activity with intelligent tracking.

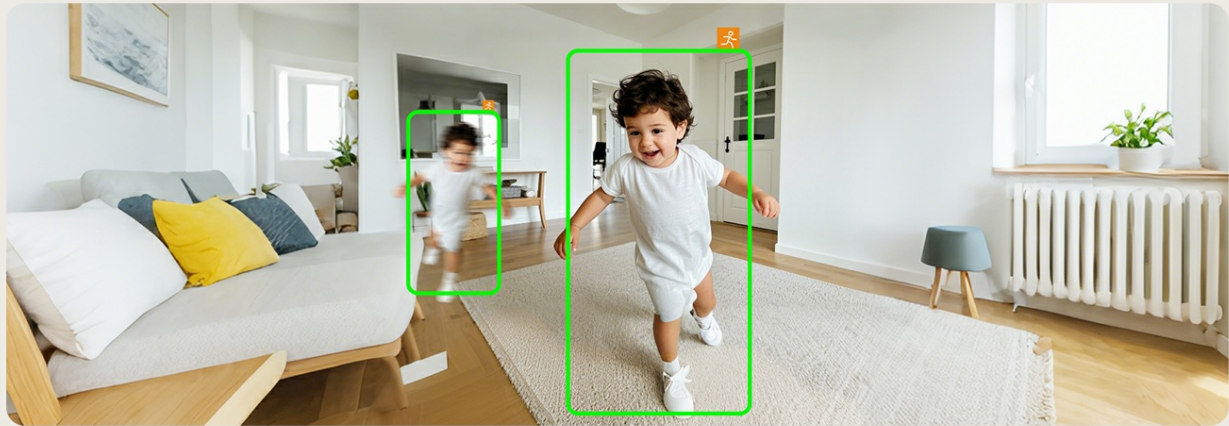


Image: The Anlapus C528 camera showing how to initiate a call using either the physical button or an "OK" hand gesture.

### 5. Night Vision

The camera offers both infrared (IR) night vision for clear black-and-white images in complete darkness and color night vision for vivid, full-color images in low-light conditions.

## Easy One Click/ Gesture Call

Establish a clear connection with just one click/ ok gesture. Effortlessly stay connected with your loved ones whenever they need assistance.



## 6. Sound & Light Alarm

Configure the camera to trigger an audible alarm and bright lights upon detection of suspicious activity, serving as a deterrent. Alarm sound and volume can be customized via the app.

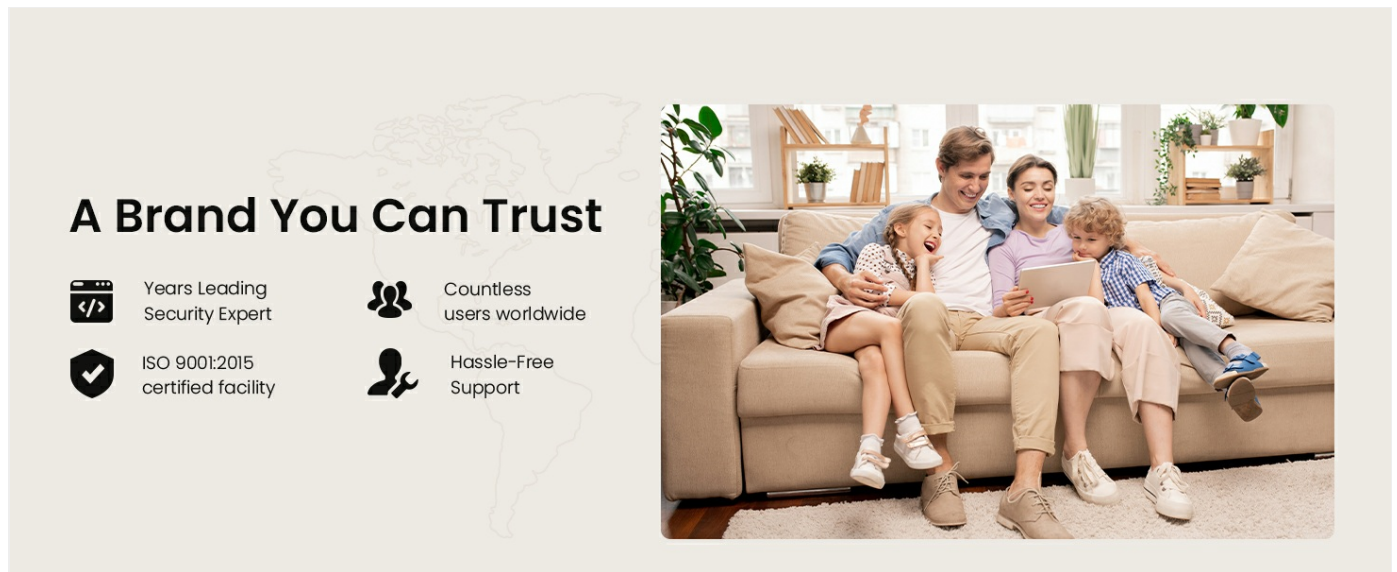


Image: The Anlapus C528 camera emitting light and sound as an alarm, depicted in a dark room with a shadowy figure.

## 7. Local Storage

The camera supports local video footage storage on a MicroSD card (up to 256GB, not included). Insert the card into the designated slot (refer to Product Overview section).

## MAINTENANCE

- **Cleaning:** Use a soft, dry cloth to clean the camera lens and body. Avoid abrasive cleaners or solvents.
- **Placement:** Ensure the camera is placed in a stable location, away from direct sunlight, heat sources, and moisture.
- **Firmware Updates:** Regularly check the Anlapus Smart app for available firmware updates to ensure optimal performance and security.

## TROUBLESHOOTING

If you encounter issues, refer to the following common problems and solutions:

- **Cannot be charged wirelessly:** The Anlapus C528 requires a power cord to operate. "Wireless" refers to its Wi-Fi connectivity, not power.
- **Unable to connect to Wi-Fi:**
  - Ensure your router is broadcasting a 2.4GHz Wi-Fi signal. The camera does not support 5GHz Wi-Fi.
  - Check the distance between the camera and your Wi-Fi router. Move the camera closer if necessary.
  - Restart the camera and your Wi-Fi router.
  - Verify that the Wi-Fi password entered in the app is correct.
- **The application cannot connect to the camera:**
  - Check your mobile device's internet connection.
  - Ensure the camera is powered on and connected to Wi-Fi.

- Try restarting the camera and the app.
- If the issue persists, try switching to a different network connection on your phone or reset the camera and repair it.

• **Video playback stalls or freezes:**

- This can be due to network issues or slow internet speed. Ensure a stable Wi-Fi connection for the camera and your viewing device.
- Reduce video quality settings in the app if your network bandwidth is limited.
- Check the MicroSD card for errors if using local storage.

SPECIFICATIONS

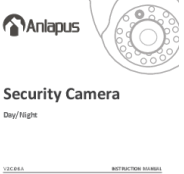
Feature	Detail
Model Number	A1K-528W4-WS
Indoor/Outdoor Usage	Indoor
Video Capture Resolution	4MP (2MP+2MP Dual Lens), 2K
Connectivity Protocol	Wi-Fi (2.4GHz only)
Power Source	Corded Electric
Special Features	Dual Lens, Pan/Tilt, Motion Detection, Auto Tracking, Two-Way Talk, Night Vision (IR & Color), Light & Siren Alert
Storage	MicroSD Card (up to 256GB, not included)
Dimensions (L x W x H)	4 x 4 x 7 inches
Item Weight	1.23 pounds

WARRANTY AND SUPPORT

Anlapus provides lifetime technical support for its products. For assistance, please contact Anlapus customer service through the official website or the Anlapus Smart app.  
For more information and support, visit the [Anlapus Store on Amazon](#).



Related Documents - C528

	<p><a href="#">Anlapus Security Camera Day/Night Instruction Manual</a></p> <p>Instruction manual for the Anlapus Day/Night Security Camera, covering product overview, mounting instructions, cable positioning, and FAQs.</p>
---	---

