

Manuals+

[Q & A](#) | [Deep Search](#) | [Upload](#)

Manuals.plus /

- › [TOAPEX](#) /
- › TOAPEX Q8 Ear Plugs for Sleeping Noise Cancelling - Instruction Manual

TOAPEX Q8

TOAPEX Q8 Ear Plugs Instruction Manual

Model: Q8 | Brand: TOAPEX

1. INTRODUCTION

Thank you for choosing TOAPEX Q8 Ear Plugs. Designed with advanced multi-layer composite technology, these earplugs provide superior noise reduction of up to 45dB, ensuring a peaceful environment for various activities. They are crafted for ultimate comfort and effective hearing protection, allowing important mid-to-high frequency sounds to pass through while blocking distracting low-frequency noise.



Image: The TOAPEX Q8 Ear Plugs shown with their sleek, black, oval-shaped carrying case. One earplug is visible outside the case, highlighting its compact design.

2. WHAT'S IN THE BOX

- TOAPEX Q8 Ear Plugs (1 pair)
- Compact Carrying Case (1)
- Assorted Eartips (8 pairs in sizes XS to XL)
- Instruction Manual (this document)

3. SETUP

3.1 Choosing the Right Fit

The TOAPEX Q8 Ear Plugs come with 8 different sizes of silicone eartips (XS, S, M, L, XL, and additional sizes) to ensure a customized and comfortable fit for various ear shapes, including children and adults. A proper fit is crucial for optimal noise reduction and comfort.

1. Carefully remove the pre-installed eartips from the earplug core.
2. Select a pair of eartips that feels snug but comfortable in your ear canal. Start with a medium size and adjust as needed.
3. Gently push the chosen eartips onto the earplug's nozzle until securely attached.

Select Your Perfect Fit



1. Try the Right Size

Toapex earplugs come with 8 different ear tips sizes for the perfect fit



2. Insert and Twist

Ensure earplugs are inserted correctly for a good seal; they shouldn't stick out or be visible from the front.

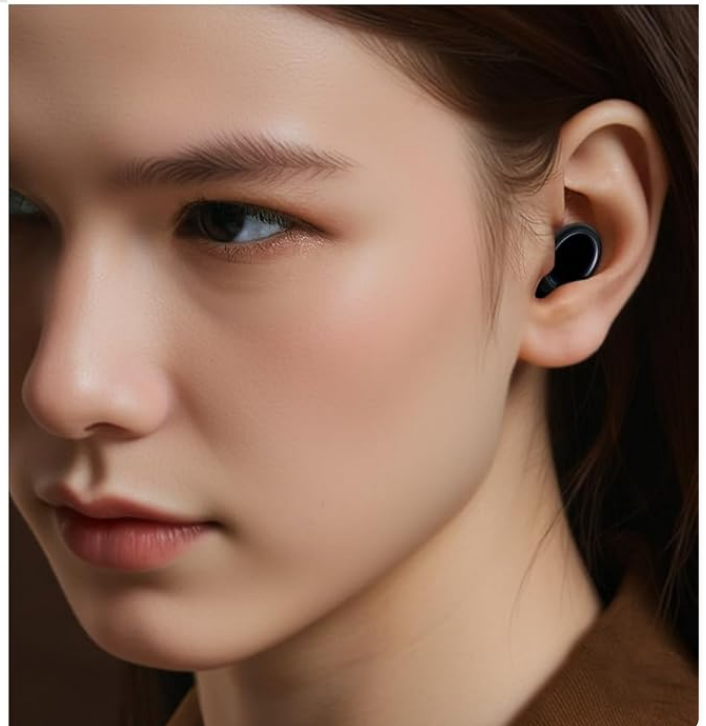


Image: A visual guide illustrating the eight different eartip sizes provided with the earplugs, alongside a three-step diagram demonstrating the correct insertion method into the ear canal.

3.2 Inserting the Ear Plugs

For effective noise reduction and comfort, ensure the earplugs are inserted correctly. They should not stick out or be visible from the front when properly seated.

1. Gently pull your earlobe upwards and outwards to straighten the ear canal.
2. Insert the earplug into your ear canal with a slight twisting motion until it feels secure and comfortable.
3. Release your earlobe. The earplug should create a good seal, significantly reducing ambient noise.

4. OPERATING INSTRUCTIONS

TOAPEX Q8 Ear Plugs are designed for versatile use, providing effective noise reduction while maintaining awareness of important sounds.

4.1 Noise Reduction for Various Activities

- **Sleeping:** Filter out nighttime noises and heavy snoring for improved sleep quality.
 - **Music & Events:** Protect your hearing at concerts, festivals, or other loud events without compromising music clarity.
 - **Focus & Work:** Reduce background distractions to enhance concentration during study or work.
 - **Noise Sensitivity:** Effectively block machine noise for individuals sensitive to loud environments, such as during lawn mowing or commuting.
-

Versatile Use

Sleep, Focus, Events & Music, Noise Sensitivity

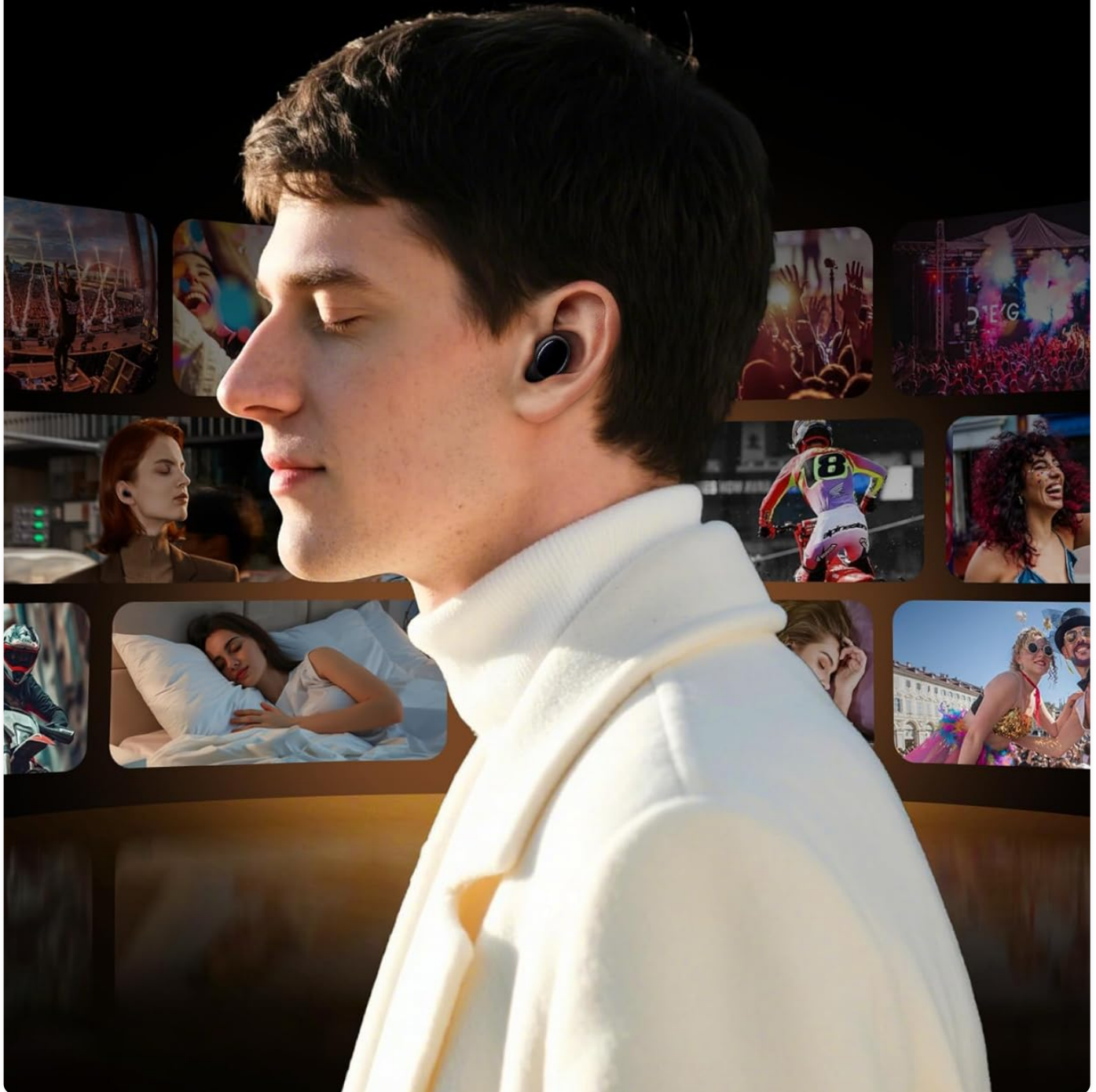


Image: A collage of images depicting individuals using the earplugs in different settings, including sleeping, attending a concert, studying, and engaging in activities requiring focus, illustrating their versatile application.

4.2 Hearing Protection Technology

The earplugs utilize cutting-edge frequency filtering technology. This allows them to block out harmful low-frequency noise from machinery and appliances, protecting your ears from potential damage, while still allowing important mid-to-high frequency sounds like conversations, alarms, and music to be heard clearly. This ensures you remain aware of critical sound signals without sacrificing hearing health.

Effective Noise Reduction

Significantly blocks ambient noise to enhance focus.



Improved
Sleep



Noise
Protection



Secure
Fit



Eco-
Friendly

Image: A graphic representation of an ear with an earplug inserted, surrounded by radiating lines, symbolizing the effective noise reduction and hearing protection provided by the product.

5. MAINTENANCE

5.1 Cleaning Instructions

To maintain hygiene and prolong the lifespan of your earplugs, regular cleaning is recommended. The silicone material allows for easy cleaning.

1. Gently remove the silicone eartips from the earplug core.

2. Wash both the earplug core and the eartips with mild soap and warm water.
3. Rinse thoroughly to remove all soap residue.
4. Allow them to air dry completely before reassembling and storing.

5.2 Storage

Always store your TOAPEX Q8 Ear Plugs in their compact carrying case when not in use. This protects them from dust, dirt, and damage, ensuring their longevity and effectiveness.

Ultra-Mini & Portable

Easy to carry, perfect for travel and daily use.



Image: The TOAPEX Q8 Ear Plugs and their compact carrying case are displayed on a sandy, desert-like background, highlighting their ultra-mini and portable design for travel and daily use.

6. TROUBLESHOOTING

6.1 Insufficient Noise Reduction

- **Check Fit:** Ensure the earplugs are inserted correctly and create a tight seal in your ear canal. Refer to Section 3.2 for proper insertion.
- **Try Different Eartips:** Experiment with different sizes of eartips provided. A size that is too small or too large will not provide optimal noise cancellation.
- **Clean Earplugs:** Accumulated earwax or debris can affect performance. Clean the earplugs as per Section 5.1.

6.2 Discomfort or Pain

- **Re-insert:** Remove the earplug and re-insert it carefully, ensuring it is not pushed too deep or at an awkward angle.
- **Change Eartip Size:** If the current eartip size feels too tight or causes pressure, try a smaller size.
- **Clean Ears:** Ensure your ears are clean and free of excessive earwax, which can cause discomfort.

7. SPECIFICATIONS

Feature	Detail
Product Dimensions	1.8 x 1.27 x 0.55 inches
Item Weight	0.56 ounces
Model Number	Q8
Brand	TOAPEX
Color	Black
Material	Silicone, Plastic
Noise Reduction Rating (NRR)	Up to 45dB
Recommended Uses	Noise Protection; Hearing Protection

8. WARRANTY AND SUPPORT

TOAPEX products are manufactured to high-quality standards. For any warranty claims, technical support, or inquiries, please refer to the contact information provided on the product packaging or visit the official TOAPEX website. Keep your purchase receipt for warranty validation.