

Manuals+

[Q & A](#) | [Deep Search](#) | [Upload](#)

manuals.plus /

> [CHROX](#) /

> [CHROX Cabin Air Filter Instruction Manual for BYD Yuan Plus EV Atto 3 \(2022-2024\)](#)

CHROX BYD220416

CHROX Cabin Air Filter Instruction Manual

For BYD Yuan Plus EV Atto 3 (2022-2024 Models)

1. PRODUCT OVERVIEW

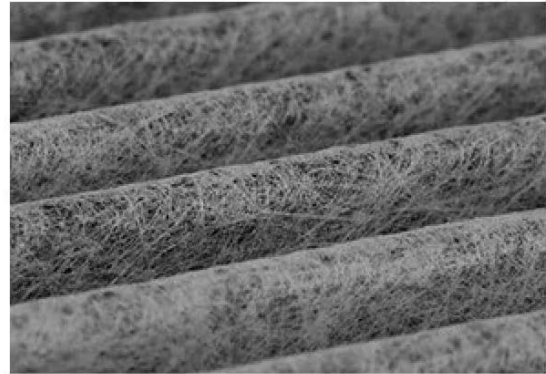
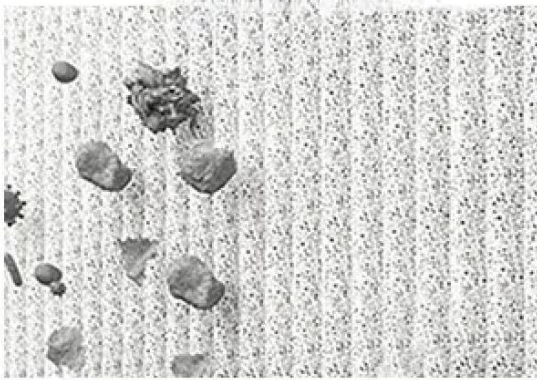
The CHROX Cabin Air Filter is designed to improve the air quality inside your vehicle's cabin. It effectively filters out dust, pollen, pollutants, and odors, providing a cleaner and fresher environment for drivers and passengers. This filter is specifically compatible with BYD Yuan Plus EV Atto 3 models manufactured from 2022 to 2024.



Image 1: Front view of the CHROX Activated Carbon Cabin Air Filter.

Key Features:

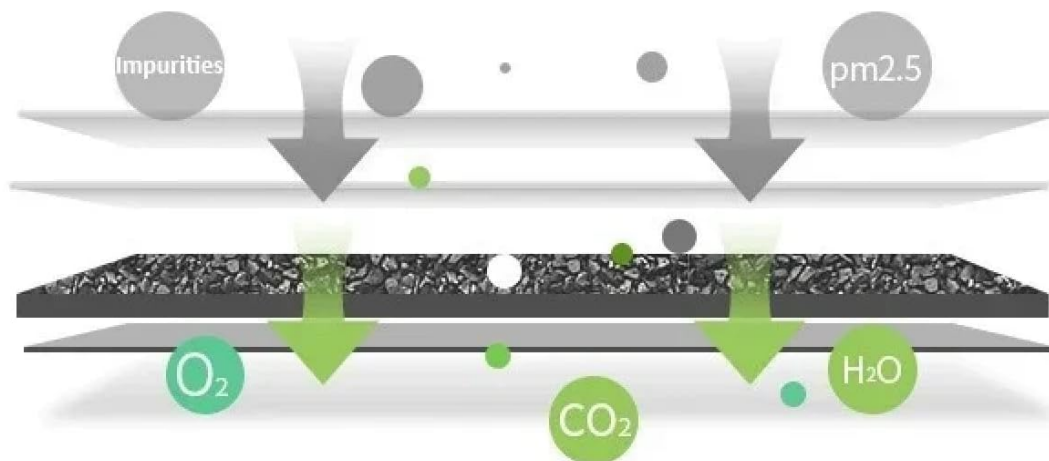
- **Advanced Filtration:** Features a double-layer activated carbon filter cloth for high filtration efficiency against PM2.5 particles and other contaminants.
- **Odor Reduction:** Activated carbon helps to effectively capture and neutralize odors, ensuring a fresh cabin environment.
- **Engine Protection:** A close-meshed, non-woven filter layer prevents particles from entering the cabin, protecting the vehicle's HVAC system.
- **High Dust Holding Capacity:** Designed to hold a significant amount of dust and debris, maintaining airflow efficiency.
- **Temperature Resistance:** Constructed with materials that offer good temperature resistance for consistent performance.
- **Easy Installation:** Pre-treated and designed for straightforward installation, typically requiring no specialized tools.



Excellent Filtration Efficiency

Отличная эффективность фильтрации

Высокая эффективность фильтрации PM2,5 и мелких частиц



1.95% Filtration efficiency

2.High Dust Holding Eapacity

3.Good temperature Resistance

4.Economical,Practical and easy to install

Image 2: Diagram illustrating the multi-layer filtration process and efficiency of the cabin air filter, showing capture of impurities and PM2.5 particles while allowing oxygen and water vapor to pass through.

2. INSTALLATION GUIDE

Before beginning installation, please ensure your vehicle is turned off. Refer to your vehicle's owner's manual for the exact location of the cabin air filter housing, as it can vary by model year and trim.

General Installation Steps:

1. **Locate Filter Housing:** The cabin air filter is typically located behind the glove compartment or under the dashboard on the passenger side.
2. **Access Filter:** Open the glove compartment. You may need to unclip or remove the glove compartment entirely to access the filter housing cover.
3. **Remove Cover:** Unlatch or unscrew the cabin air filter housing cover.
4. **Note Airflow Direction:** Before removing the old filter, observe the airflow direction arrow printed on its side. This is crucial for correct installation of the new filter.
5. **Remove Old Filter:** Carefully pull out the old cabin air filter. Dispose of it properly.
6. **Insert New Filter:** Insert the new CHROX cabin air filter into the housing, ensuring the airflow arrow on the new filter points in the same direction as the old one (usually towards the rear of the vehicle or downwards).
7. **Secure Cover:** Replace the filter housing cover and re-secure the glove compartment.
8. **Test System:** Turn on your vehicle and test the air conditioning/heating system to ensure proper airflow.

Installation typically takes less than five minutes and usually requires no specialized tools.



Image 3: The CHROX cabin air filter shown alongside its packaging, with a BYD Yuan Plus EV in the background, indicating compatibility.

3. OPERATION

Once installed, the CHROX Cabin Air Filter operates passively as part of your vehicle's heating, ventilation, and air conditioning

(HVAC) system. It continuously filters the air entering the cabin, removing airborne particles and odors. No direct user interaction is required for its operation.

4. MAINTENANCE

Regular maintenance of your cabin air filter is essential for maintaining optimal air quality and HVAC system performance.

Replacement Schedule:

- It is generally recommended to replace your cabin air filter every 12,000 to 15,000 miles or once a year, whichever comes first.
- In areas with high pollution, heavy traffic, or dusty conditions, more frequent replacement may be necessary.
- If you notice reduced airflow from your vents, persistent unpleasant odors, or increased allergy symptoms, inspect and potentially replace the filter sooner.

Refer to your vehicle's owner's manual for specific recommendations regarding cabin air filter replacement intervals for your BYD Yuan Plus EV Atto 3.

5. TROUBLESHOOTING

If you experience issues related to your cabin air filter, consider the following:

- **Reduced Airflow:** A clogged filter can restrict airflow. Check if the filter is dirty and replace it if necessary. Ensure the airflow direction arrow was followed during installation.
- **Unpleasant Odors:** While the activated carbon filter is designed to reduce odors, a heavily saturated or old filter may lose effectiveness. Replace the filter to restore odor filtration.
- **Increased Noise from HVAC:** A severely clogged filter can cause the blower motor to work harder, potentially leading to increased noise. Replacing the filter may resolve this.

If problems persist after checking and replacing the filter, consult a qualified automotive technician.

6. PRODUCT SPECIFICATIONS

Brand	CHROX
Model Compatibility	BYD Yuan Plus EV Atto 3 (2022, 2023, 2024)
Filter Type	Activated Carbon Cabin Air Filter
Part Number (BYD)	BYD220416
Length	205 mm
Width	203 mm
Height	35 mm
ASIN	B0DKB7KJR9



For BYD YUAN PLUS EV, ATTO 3 2022-



BYD220416

Length : 205 mm

Width : 203 mm

Height : 35 mm

Image 4: Visual representation of the cabin air filter's dimensions (Length: 205mm, Width: 203mm, Height: 35mm) and its compatibility with BYD Yuan Plus EV and Atto 3 models.

7. WARRANTY AND SUPPORT

CHROX is committed to providing a positive customer experience. If you have any questions regarding the product, installation, or performance, please contact the seller or manufacturer directly for assistance. They aim to resolve all product-related inquiries within 24 hours.

Please ensure to verify product compatibility with your specific vehicle model before purchase to avoid any inconvenience.

