

## HOMYEDAMIC 6002

# HOMYEDAMIC Oversized Recliner Chair Model 6002 User Manual

Brand: HOMYEDAMIC | Model: 6002

## INTRODUCTION

---

This manual provides detailed instructions for the assembly, operation, and maintenance of your HOMYEDAMIC Oversized Recliner Chair, Model 6002. Please read this manual thoroughly before assembly and use to ensure proper function and safety.



Image: The HOMYEDAMIC Oversized Recliner Chair, Model 6002, in Umber Classic color, featuring a wide seat and plush cushioning.

## IMPORTANT SAFETY INFORMATION

---

- **Assembly Required:** This recliner requires assembly. It is recommended to have two people for easier and safer assembly, although one person can assemble it in approximately 30 minutes.
- **Manual Reclining Mechanism:** The footrest is operated manually via a side pull ring. Closing the footrest requires some resistance and leg force.
- **User Suitability:** Due to the manual footrest operation, this recliner is not recommended for individuals with limited mobility, such as the elderly, pregnant women, disabled individuals, or those with leg injuries.
- **Recommended Height:** This recliner is best suited for individuals between 5'1" and 5'9" tall.
- **Weight Capacity:** Do not exceed the maximum weight capacity of 350 lbs (158 kg).
- **Shipping:** The product ships in two separate boxes. If only one box is received initially, please wait for the second box to arrive before attempting assembly.

# Requires Manual Foot Pedal Closure

not suitable for the elderly/pregnant women/disabled/legged people



Image: Visual representation indicating that the manual foot pedal closure mechanism is not suitable for the elderly, pregnant women, disabled, or individuals with leg issues.

## PACKAGE CONTENTS

Your HOMYEDAMIC Recliner Chair is shipped in two separate boxes. Please ensure all components are present before beginning assembly.

- Backrest Section
- Seat Base with Footrest Mechanism
- Armrests (Left and Right)
- Lumbar Pillow
- Assembly Hardware (screws, washers, Allen wrench)
- Instruction Manual

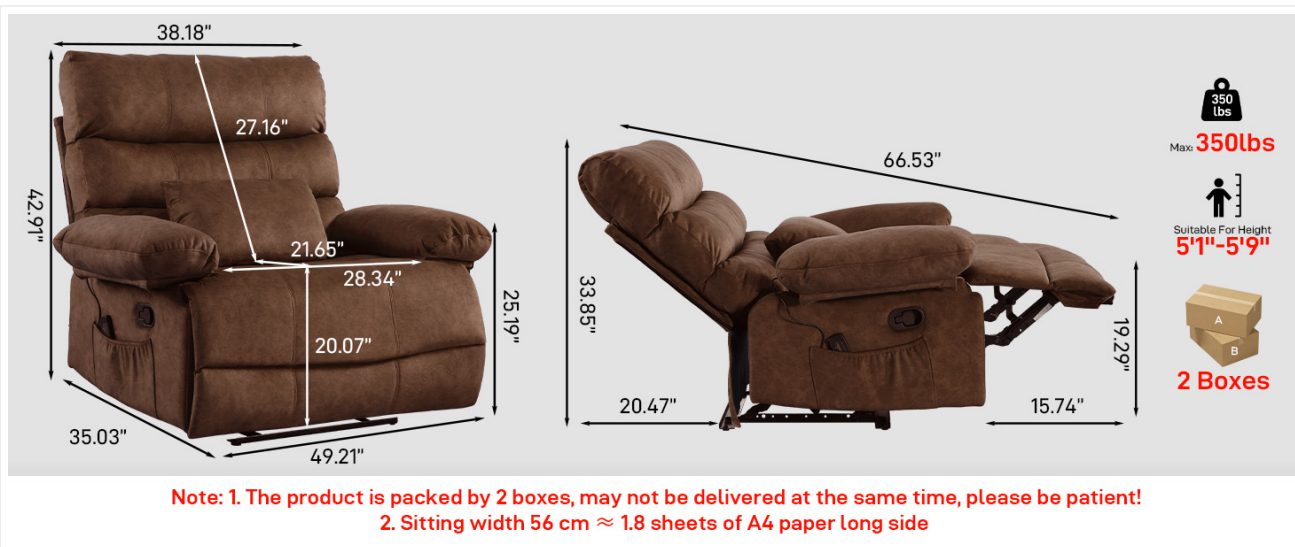


Image: Product dimension diagram also illustrating the two-box shipping method.

## ASSEMBLY INSTRUCTIONS

Assembly typically takes about 30 minutes for one person. For best results and safety, consider assembling with another person. Ensure all parts are present before starting.

1. Unpack all components from both boxes and lay them out on a clean, soft surface to prevent damage.
2. Attach the backrest to the seat base. Align the metal brackets on the backrest with the corresponding slots on the seat base and slide them into place until they click securely.
3. Connect the armrests. Slide each armrest onto the side brackets of the seat base and secure them using the provided screws and Allen wrench. Ensure they are firmly attached.
4. Attach the lumbar pillow. The lumbar pillow is designed for additional support and can be positioned as desired.
5. Verify all connections are tight and secure before using the chair.

*Note: If you encounter issues with screws for armrests, ensure you are using the correct hardware as per the included instructions.*

## OPERATING INSTRUCTIONS

### Reclining Function

To recline the chair, locate the pull ring on the side of the cushion. Pull the ring to release the footrest, which will pop up automatically. Lean back into the chair, placing your elbows on the armrests, and the backrest will recline freely according to your body weight. The backrest can be adjusted up to a maximum angle of 150 degrees. It is not motorized, so the angle is adjusted by leaning back.



Image: Close-up view of the side pocket and the manual pull handle used to activate the reclining mechanism.



# RECLINE FUNCTION

The angle of the backrest is adjustable but not lockable



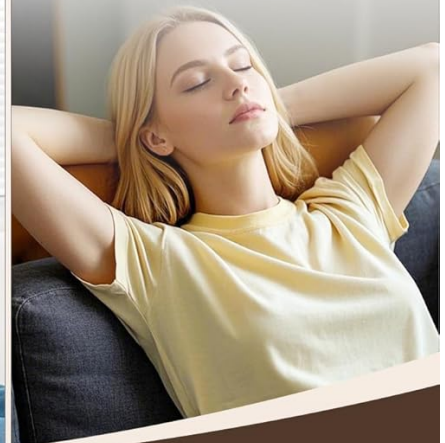
Reading



Watching TV



Napping



Exterior snap handles open the recliner to recline

Image: Illustration of various reclining angles (90°, 120°, 150°) and the side pull handle for activation.

# 110°-150° RECLINER

The angle of the backrest is adjustable but not lockable



110° Reading Book

Watching TV

150° Sleeping

Image: A person demonstrating the recliner's adjustable backrest from 110 degrees (reading) to 150 degrees (sleeping), with the side pull handle visible.

## Footrest Retraction

To retract the footrest, sit forward with your body leaning slightly forward and grasp the armrests with both hands. Press the center of the footrest with your heel. The footrest will retract easily. Ensure the footrest is fully retracted before standing up from the chair.





Image: Detailed instructions on how to operate the manual recliner and the correct method for retracting the footrest with minimal effort.

## Pedal Recovery Method

- ❶ Sit with your body leaning forward and grasp the armrests with both hands.
- ❷ Point your heel at the red circle in the picture and the footrest will retract easily.

Wrong way



Image: Diagram showing the correct method to retract the footrest by leaning forward and pressing with the heel, contrasting with an incorrect method.

## CARE AND MAINTENANCE

- **Cleaning:** For general cleaning, use a soft, damp cloth with mild soap. Avoid harsh chemicals or abrasive cleaners, as these may damage the fabric.
- **Spills:** Blot spills immediately with a clean, dry cloth. Do not rub, as this can spread the stain.
- **Vacuuming:** Regularly vacuum the chair using a soft brush attachment to remove dust and debris.
- **Inspection:** Periodically check all bolts and screws to ensure they remain tight. Retighten if necessary.
- **Sunlight Exposure:** Avoid prolonged exposure to direct sunlight to prevent fading of the fabric.

## TROUBLESHOOTING

**Issue: Footrest is difficult to close.**

**Solution:** The footrest requires manual force to close. Ensure you are leaning forward and pressing firmly with your heels on the center of the footrest. This mechanism is designed with some resistance.

**Issue: Missing parts or hardware.**

**Solution:** The recliner ships in two separate boxes. Please verify that both boxes have been received. If parts are still missing after checking both boxes, contact HOMYEDAMIC customer support.

**Issue: Chair feels unstable or wobbly after assembly.**

**Solution:** Recheck all assembly connections, especially where the backrest and armrests attach to the seat base. Ensure all screws are tightened securely. If the issue persists, disassemble and reassemble carefully, following the instructions.

## PRODUCT SPECIFICATIONS

Attribute	Detail
Brand	HOMYEDAMIC
Model Name	6002
Product Dimensions (D x W x H)	35"D x 32.5"W x 40"H
Seat Width	28 inches
Seat Depth	24 inches
Item Weight	110 pounds
Maximum Weight Capacity	350 lbs
Material	Flannel fabric, Foam fill
Reclining Positions	Adjustable up to 150 degrees (manual)
Color	Umber (as per current variant)



# Product Dimension

///



Max: **350lbs**



**5'1"-5'9"**



**2 Boxes**

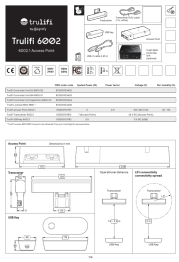
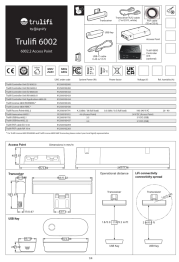


Image: Detailed diagram showing all key dimensions of the recliner chair.

## WARRANTY AND SUPPORT

For specific warranty information, please refer to the documentation included with your purchase or contact HOMYEDAMIC customer service directly. Typically, products come with a manufacturer's warranty covering defects in materials and workmanship.

If you require assistance with assembly, parts, or have any questions regarding your HOMYEDAMIC Oversized Recliner Chair, please contact the manufacturer or your retailer for support. Keep your purchase receipt and model number (6002) handy for faster service.

You may also visit the official HOMYEDAMIC store on Amazon for more information: [HOMYEDAMIC Store](#)

	<p><a href="#">HOMYEDAMIC Recliner Chair Assembly Instructions and User Guide</a></p> <p>Detailed assembly instructions and usage guide for the Homyedamic Recliner Chair (Model 9020-Blue1). Learn how to assemble, operate, and care for your massage recliner.</p>
	<p><a href="#">Signify Trulifi 6002.1 Access Point Installation Guide</a></p> <p>Detailed installation instructions for the Signify Trulifi 6002.1 Access Point, covering system setup, component connections, and essential safety guidelines for professional deployment.</p>
	<p><a href="#">Trulifi 6002.2 Access Point Installation Guide</a></p> <p>Detailed installation instructions for the Signify Trulifi 6002.2 Access Point, covering system components, wiring, dimensions, and safety precautions.</p>
	<p><a href="#">Waterlogic WL250 Operating, Installation, and Service Manual</a></p> <p>Comprehensive guide for the Waterlogic WL250 water treatment system, covering operation, installation, features, safety, and service procedures. Learn about its advanced purification and dispensing capabilities.</p>
	<p><a href="#">Emerson EK-6002 Portable Bluetooth Karaoke System with 7-inch LCD Display User Manual</a></p> <p>User manual for the Emerson EK-6002 Portable Bluetooth Karaoke System. Provides comprehensive instructions on setup, operation, features, safety precautions, FCC compliance, environmental indications, and technical support for this consumer electronic device.</p>