

Manuals+

[Q & A](#) | [Deep Search](#) | [Upload](#)

manuals.plus /

- › [ecozy](#) /
- › [ecozy IM-BS260C Countertop Ice Maker User Manual](#)

ecozy IM-BS260C

ecozy IM-BS260C Countertop Ice Maker User Manual

Model: IM-BS260C

1. PRODUCT OVERVIEW

The ecozy IM-BS260C is a portable countertop ice maker designed for convenience and efficiency. It produces bullet-shaped ice cubes quickly and features a self-cleaning function for easy maintenance. This manual provides essential information for safe and effective operation.



Image 1.1: The ecozy IM-BS260C Countertop Ice Maker, showcasing its compact design and included insulated cup.

Its compact footprint makes it easy to place on any countertop, seamlessly fitting into your kitchen, office, or RV setup. The integrated handle allows for easy portability.

Portable Handle Design



Image 1.2: The portable handle design facilitates easy transport of the ice maker.

2. SAFETY INSTRUCTIONS

- Read all instructions before operating the appliance.
- Ensure the ice maker is placed on a stable, level surface away from direct sunlight and heat sources.
- Do not immerse the appliance, power cord, or plug in water or other liquids.
- Supervise children when the appliance is in use.
- Unplug the ice maker from the power outlet before cleaning or when not in use.
- Do not operate the appliance with a damaged cord or plug.

- Use only potable water in the ice maker.
- Do not block ventilation openings.
- Do not use the appliance for purposes other than its intended use.

3. SETUP AND FIRST USE

1. Unpacking

Carefully remove the ice maker from its packaging. Check for any damage during transit. Retain packaging for future storage or transport.

2. Placement

Place the ice maker on a flat, stable surface. Ensure there is adequate ventilation around the unit (at least 4 inches of space on all sides). Avoid placing it near heat-generating appliances or in direct sunlight.

3. Initial Cleaning

Before first use, it is recommended to clean the interior of the ice maker. Follow the self-cleaning instructions in Section 5.1. After the cleaning cycle, drain any remaining water and wipe the interior dry.

4. Power Connection

Plug the ice maker into a grounded electrical outlet (115 Volts, 60 Hz). Ensure the voltage matches the appliance's requirements.

4. OPERATING INSTRUCTIONS

1. Adding Water

Open the lid and fill the water reservoir with potable water up to the MAX fill line. Do not overfill.

2. Selecting Ice Size

The ecozy IM-BS260C offers two ice cube sizes: Small (S) and Large (L). Select your desired size using the control panel. The small cubes measure approximately 0.78" x 0.951", and large cubes measure approximately 0.90" x 1.01".

2 Ice Cube Sizes



S
0.78"X0.951"

L
0.90"X1.01"

Image 4.1: Comparison of small and large bullet ice cube sizes.

3. Starting Ice Production

Press the POWER button to start the ice-making cycle. The indicator light will illuminate. The first batch of 9 ice cubes will be ready in approximately 6 minutes.

Enjoy Ice in Just 6 Mins



Image 4.2: The ice maker produces 9 ice cubes in approximately 6 minutes.

4. Continuous Operation

The ice maker will continue to produce ice until the ice basket is full or the water reservoir is empty. When the ice basket is full, the unit will pause. When the water level is low, an indicator light will signal the need for a refill. The unit can produce up to 26 lbs of ice per day under optimal conditions.

5. Noise Level

The ecozy IM-BS260C operates at a low noise level, typically under 35dB, ensuring a quiet environment in your kitchen, office, or RV.

Low Noise



Image 4.3: The ice maker's low noise operation, suitable for various environments.

6. Using the Included Cup

The ice maker comes with an insulated cup designed to keep your ice frozen longer, ideal for maintaining cool beverages.

5. MAINTENANCE AND CLEANING

1. Self-Cleaning Function

The ice maker features a convenient self-cleaning function:

- Ensure the unit is empty of ice and water.

- Fill the water reservoir with clean water up to the MAX line.
- Press and hold the CLEAN button (or equivalent, refer to control panel markings) for a few seconds to activate the self-cleaning cycle.
- The cycle typically lasts for 30 minutes.
- Once complete, drain the water from the unit using the drain plug located at the bottom.

Convenient Self-Cleaning

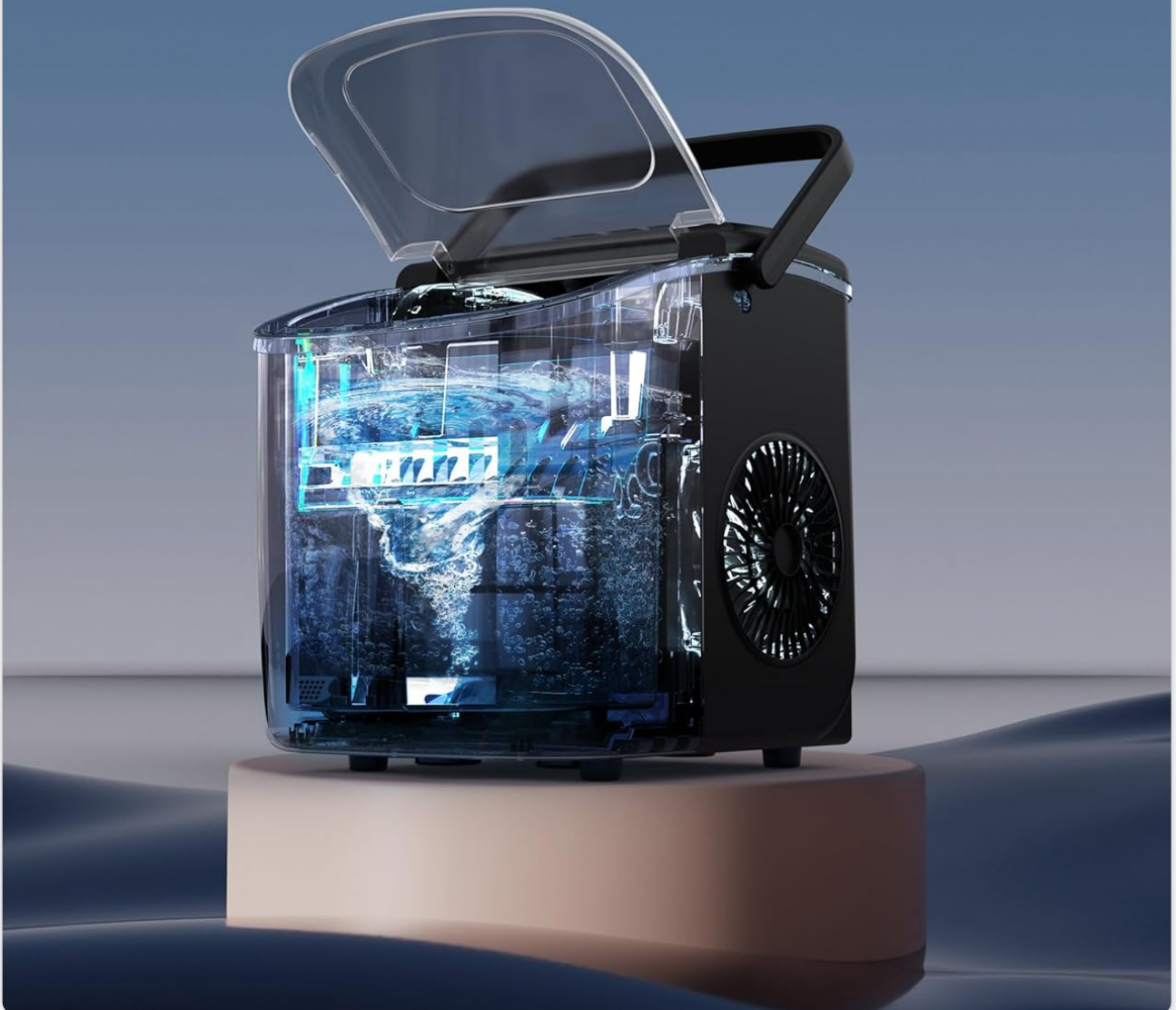


Image 5.1: Activating the self-cleaning function with a single press, completing in 30 minutes.

2. Draining Water

To drain water, locate the drain plug at the bottom of the unit. Place a container underneath and remove the plug to allow water to flow out. Reinsert the plug securely after draining.

3. External Cleaning

Wipe the exterior of the ice maker with a soft, damp cloth. Do not use abrasive cleaners or solvents.

4. Storage

When storing the ice maker for an extended period, ensure it is completely drained and dry. Leave the lid slightly ajar to prevent moisture buildup and odors. Store in a cool, dry place.

6. TROUBLESHOOTING

Problem	Possible Cause	Solution
Ice maker not producing ice.	No water in reservoir; power not connected; ambient temperature too high.	Fill water reservoir; ensure unit is plugged in; operate in a cooler environment.
"Water Low" indicator is on.	Water reservoir is empty.	Add potable water to the reservoir up to the MAX fill line.
"Ice Full" indicator is on.	Ice basket is full.	Remove ice from the basket. The unit will resume ice production.
Ice cubes are small or clumpy.	Water temperature is too high; ambient temperature is too high.	Use colder water; operate in a cooler environment.
Unusual noise during operation.	Unit not level; internal components vibrating.	Ensure the unit is on a stable, level surface. If noise persists, contact customer support.

7. SPECIFICATIONS

Feature	Detail
Brand	ecozy
Model Name	IM-BS260C
Product Dimensions (D x W x H)	8.74" x 11.57" x 11.42"
Ice Production Capacity	Up to 26 Pounds per Day
Ice Production Speed	9 Cubes in 6 Minutes
Wattage	120 watts
Voltage	115 Volts
Refrigerant	R600a
Item Weight	13.67 pounds
Material	Acrylonitrile Butadiene Styrene, Plastic
Included Components	Ice maker, ice bags, ice scoop

8. WARRANTY AND SUPPORT

For warranty information and customer support, please refer to the documentation included with your product or visit the official ecozy website. Keep your purchase receipt as proof of purchase for warranty claims. For direct assistance, you may contact ecozy customer service through their official channels.



© 2025 ecozy. All rights reserved.