

[Manuals.plus](#) /

› [Fanttik Solo](#) /

› Fanttik Solo SonicDry H10 APEX Hair Dryer Instruction Manual

Fanttik Solo H10 APEX

Fanttik Solo SonicDry H10 APEX Hair Dryer

INSTRUCTION MANUAL

Introduction

This manual provides essential information for the safe and effective use of your Fanttik Solo SonicDry H10 APEX Hair Dryer. Designed with a powerful 110,000 RPM brushless motor, this hair dryer offers fast drying, quiet operation, and advanced ionic technology for smooth, frizz-free results. Please read this manual thoroughly before operating the device and retain it for future reference.

Safety Information

For your safety, please observe the following precautions:

- Keep out of reach of children.
- Do not use while bathing or near water. Keep away from sinks, bathtubs, or any water sources.
- Avoid overheating the device.
- Do not use if the power cord or plug is damaged.
- Designed for 120V outlets. Using the Fanttik Solo H10 APEX hair dryer with higher voltage may cause damage. For international travel, use a proper voltage converter to ensure safe operation and maintain optimal performance.

Package Contents

Verify that all items are present in the package:

- 1x Fanttik Solo SonicDry H10 APEX High-Speed Hair Dryer
- 1x Concentrator Nozzle
- 1x User Manual



Image: The Fanttik Solo SonicDry H10 APEX Hair Dryer, concentrator nozzle, and user manual neatly arranged in its product packaging.

Your browser does not support the video tag.

Video: An unboxing demonstration of the Fanttik Solo SonicDry H10 APEX Hair Dryer, showcasing the hair dryer unit, concentrator, and user manual included in the box.

Product Overview

The Fanttik Solo SonicDry H10 APEX is engineered for efficient and gentle hair drying. Key features include:

- **SonicDry Tech:** 110,000 RPM brushless motor delivers 65 m/s airflow for up to 80% faster drying.
- **SoftSonic Tech:** 8-layer damping noise reduction ensures a quiet operation at 56dB.

- **Ultra-Light Design:** Weighing only 0.74lb, it reduces arm fatigue during use.
- **AquaGlow Tech:** Emits high-concentration ions to reduce frizz and enhance hair shine.
- **Smart HD Display:** Provides real-time information on temperature and airflow settings.
- **Intelligent Temperature Control:** Minimizes heat damage by maintaining optimal temperatures.



Image: The Fanttik Solo SonicDry H10 APEX Hair Dryer in grey, featuring its sleek design and the magnetic concentrator nozzle.

SoftSonic™

Eight-layer noise reduction and sound-absorbing cotton for quiet drying.



Intelligent Heat Control

Prevent heat damage



Motor Speed
110,000 rpm

Airflow Speed
65 m/s

80% FASTER DRYING AND LESS DAMAGE
High speed brushless motor

Image: An internal diagram illustrating the SonicDry Tech with a 110,000 RPM brushless motor and 65 m/s airflow, highlighting intelligent heat control for damage prevention.

LightFlow™

Compact, integrated
airflow design for easy,
effortless handling.



COMPACT AND LIGHTWEIGHT

Only 0.74 lb, easy to hold and transport

Image: A woman carrying the Fanttik Solo H10 APEX Hair Dryer in a tote bag, demonstrating its compact and ultra-lightweight design (0.74 lb) for easy portability.

60%
Frizzy

40%
Smooth

30%
Shiny

BEFORE

AFTER

200 MILLION NEGATIVE IONS
Reduce hair damage

Image: Before and after comparison showing the effect of 200 million negative ions from the AquaGlow Tech, resulting in reduced frizz and increased shine.



56dB

SoftSonic™

Eight-layer noise reduction and sound-absorbing cotton for quiet drying.

POWERFUL, NOISELESS DRYING

Low noise only 56 dB

Image: A scene depicting the hair dryer in use with a man talking on the phone nearby, emphasizing the 56dB low-noise operation due to SoftSonic Tech.

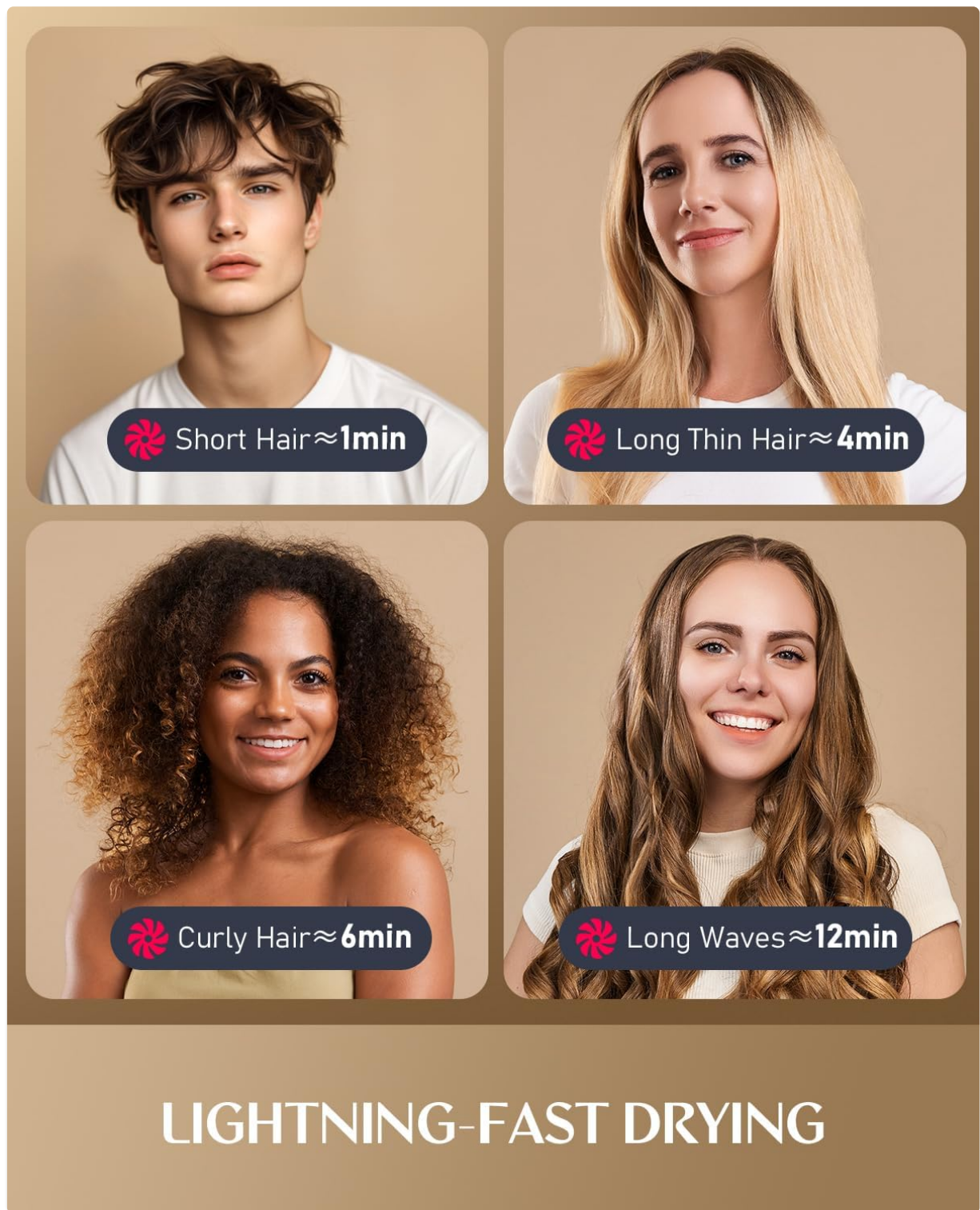


Image: An infographic detailing approximate drying times for various hair types: short hair (~1 min), long thin hair (~4 min), curly hair (~6 min), and long waves (~12 min), showcasing the fast drying capability.

Setup

Before first use, ensure the hair dryer is connected to a 120V power outlet.

1. **Attach Concentrator Nozzle:** The concentrator nozzle attaches magnetically to the front of the hair dryer. Simply align it with the front opening, and it will snap into place.

Your browser does not support the video tag.

Video: A demonstration of attaching and detaching the magnetic concentrator nozzle to the hair dryer, highlighting its secure and easy-to-use design.

Operating Instructions

Familiarize yourself with the controls for optimal styling:



Image: A detailed view of the hair dryer's handle, showing the LED screen displaying airflow and heat, the On/Off/Speed button, and the Wind Temperature button.

- Power On/Off & Speed Settings:** Use the top button on the handle to turn the device on or off. Pressing this button also cycles through the two wind speeds: Soft Wind Gear and Strong Wind Gear. The current speed is indicated on the HD display.
- Heat Modes:** Use the bottom button on the handle to select from four heat modes: Cold Air Mode, Warm Air Mode, Hot Air Mode, and Circulation Mode. The selected temperature is displayed in real-time on the HD screen.
- One-Touch Cool Shot:** To instantly switch to cool air, press and hold the top button. This feature

helps to set your hairstyle.

4. **HD Display:** The integrated LED screen provides real-time feedback on the current temperature (in °F) and selected airflow setting, allowing for precise control and minimizing heat damage.
5. **Ionic Technology:** The AquaGlow Tech automatically releases negative ions during operation to reduce static electricity, resulting in smoother, shinier hair.

Your browser does not support the video tag.

Video: A detailed review demonstrating the hair dryer's features, including its compact design, magnetic concentrator, and the functionality of its speed and heat settings with real-time temperature display.

Maintenance

Regular maintenance ensures optimal performance and longevity of your hair dryer.

1. **Cleaning the Filter:** The hair dryer features a detachable magnetic filter at the base of the handle. Regularly remove and clean any accumulated dust or hair to maintain airflow and prevent overheating.

Troubleshooting

If you encounter any issues, please refer to the following general advice:

- **Device not turning on:** Ensure the power cord is securely plugged into a 120V outlet. Check for any damage to the cord or plug.
- **Reduced airflow or overheating:** Clean the detachable magnetic filter at the base of the handle to remove any obstructions.
- If problems persist, discontinue use and contact customer support.

Specifications

Feature	Specification
Product Dimensions	2.63 x 9.02 x 2.87 inches
Item Weight	11.84 ounces (0.74 lb)
Model Number	H10 APEX
Manufacturer	Fanttik Solo
Color	Grey
Material	Metal, Plastic
Wattage	1500 watts
Power Source	Corded Electric

Warranty and Support

For warranty information or technical support, please refer to the contact details provided in your product packaging or visit the official Fanttik Solo website. Keep your purchase receipt as proof of purchase.

