

VERFARM B0DK5DF82Q

VERFARM 3 Inch Low Profile Queen Size Bed Frame Instruction Manual

Model: B0DK5DF82Q

1. INTRODUCTION

Thank you for choosing the VERFARM 3 Inch Low Profile Queen Size Bed Frame. This manual provides essential information for the safe assembly, operation, and maintenance of your new bed frame. Please read these instructions carefully before beginning assembly and retain them for future reference.

2. SAFETY INFORMATION

- **Weight Limit:** Do not load more than 3000 pounds on the bed frame. Exceeding this limit may cause structural damage or injury.
- **Sharp Edges:** Exercise caution around sharp edges during assembly and maintenance to prevent injury.
- **Adult Assembly:** Assembly should be performed by adults. Keep small parts away from children.
- **Secure Connections:** Ensure all bolts and screws are tightened securely before use. Periodically check and retighten as necessary.
- **Level Surface:** Always place the bed frame on a flat, level surface to ensure stability.

3. PACKAGE CONTENTS

Your VERFARM bed frame package includes all necessary parts, tools, and clear instructions for assembly. Please verify that all components are present and undamaged before proceeding.

- Bed frame components (labeled A, B, C, etc.)
- Assembly hardware (screws, bolts, washers, nuts)
- Assembly tools (e.g., Allen wrench)
- Instruction manual

4. SETUP AND ASSEMBLY

Follow these steps to assemble your VERFARM 3 Inch Low Profile Queen Size Bed Frame. All parts are

clearly labeled for easy identification.

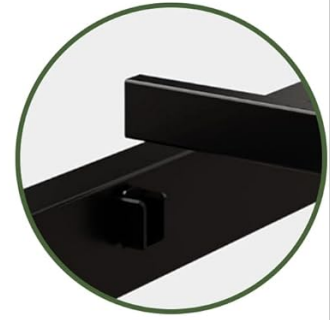
1. **Unpack Components:** Carefully remove all parts from the packaging. Lay them out on a clean, soft surface (like a carpet) to prevent scratches.
2. **Identify Parts:** Refer to the included parts list and diagrams to identify each component.
3. **Assemble Frame Sections:** Connect the main frame sections according to the diagrams. Ensure all connections are aligned correctly before tightening any fasteners.
4. **Install Support Slats:** Place the metal support slats across the frame. These slats provide direct support for your mattress, eliminating the need for a box spring.
5. **Secure All Fasteners:** Once all components are in place, securely tighten all bolts and screws using the provided tools. Do not overtighten.
6. **Final Check:** Ensure the frame is stable and all connections are firm before placing a mattress on it.



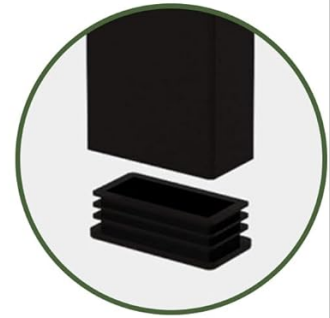
Image: The fully assembled VERFARM bed frame, showcasing its low-profile design and metal slat support system, ready for a mattress.



Stable support



Easy assemble



Floor protection

Image: Detailed view highlighting the stable support points, simplified assembly mechanism, and protective caps on the legs for floor protection.

5. OPERATING INSTRUCTIONS

The VERFARM 3 Inch Low Profile Queen Size Bed Frame is designed for direct mattress placement, eliminating the need for a box spring.

1. **Mattress Placement:** Carefully place your queen-size mattress directly onto the assembled bed frame slats.
2. **Even Distribution:** Ensure the mattress is centered and evenly distributed on the frame for optimal support and stability.
3. **Low Profile Design:** The 3-inch height is ideal for those who prefer a lower sleeping surface or for use with thicker mattresses.



Image: The VERFARM bed frame with a mattress and bedding, illustrating its low-profile appearance in a bedroom setting.

6. MAINTENANCE

To ensure the longevity and performance of your bed frame, follow these maintenance guidelines:

- **Regular Cleaning:** Wipe the metal frame with a soft, damp cloth to remove dust and dirt. Avoid abrasive cleaners.
- **Fastener Check:** Periodically (e.g., every 3-6 months) check all bolts and screws to ensure they remain tight. Retighten if necessary.
- **Avoid Harsh Chemicals:** Do not use harsh chemicals or solvents on the powder-coated surface, as this may damage the finish.
- **Weight Distribution:** Avoid concentrating heavy loads on a single point of the frame. Distribute weight evenly.

7. TROUBLESHOOTING

- **Noise/Squeaking:** If the bed frame produces noise, check all assembly points. Loosen and then retighten all bolts and screws. Ensure the frame is on a level surface.

- **Mattress Sliding:** If your mattress tends to slide on the frame, consider using a non-slip mattress pad or grip strips placed between the mattress and the slats.
- **Instability:** If the frame feels unstable, re-verify that all connections are secure and that the frame is placed on a flat, even floor.

8. SPECIFICATIONS

Feature	Detail
Model	B0DK5DF82Q
Size	Queen
Product Dimensions	78.74"L x 59.84"W x 3"H
Material	Metal
Color	Black
Finish Type	Powder Coated
Special Feature	Squeak Resistant
Assembly Required	Yes
Item Weight	30.9 pounds

Bed frame size

Product Dimensions:

L*W*H: 78.74 " × 59.84 " × 3" (inches)



No
Box Spring



Quiet



Under
Bed Storage



Image: A diagram illustrating the length, width, and height of the bed frame, confirming its 3-inch low profile.

9. WARRANTY AND SUPPORT

VERFARM provides a one-year quality warranty service for this metal platform queen bed frame. If you encounter any issues or have questions, please contact our customer service team. We are committed to providing excellent after-sales support and will respond within 24 hours.

For assistance, please refer to the contact information provided with your purchase or visit the official VERFARM website.