

URIT PFS-30A

URIT PFS-30/PFS-30A 5-in-1 Lipid Test Kit Instruction Manual

Model: PFS-30A | Brand: URIT

1. INTRODUCTION

This manual provides essential instructions for the safe and effective use of your URIT PFS-30/PFS-30A 5-in-1 Lipid Test Kit. This device is designed for rapid and comprehensive lipid panel testing, offering results for Total Cholesterol, Triglycerides, HDL, LDL, and the TC/HDL ratio from a single blood sample.

The kit is engineered for ease of use, requiring only a minimal blood sample and providing results in approximately 2 minutes. It also features an integrated memory for storing up to 300 test results with time and date stamps, enabling convenient health trend tracking.

Important: This device is for informational purposes and should not replace professional medical advice or diagnosis. Consult your healthcare provider for interpretation of results and any health concerns.

2. PACKAGE CONTENTS

Verify that all items listed below are present in your URIT 5-in-1 Lipid Test Kit package:

- URIT PFS-30A Lipid Test Meter (Monitor)
- Lancing Device
- Test Strips (10 Cholesterol Test Strips included)
- Capillary Tubes
- Lancets
- Code Card (for test strip alignment)
- Storage Bag
- Instruction Manual



Image 2.1: Contents of the URIT 5-in-1 Lipid Test Kit. The image displays the main meter, a lancing device, a vial of test strips, several blue lancets, and a black zippered storage case.

3. SETUP AND FIRST-TIME USE

3.1 Setting Time and Date

When using the device for the first time, you will need to set the current year, month, and day. This ensures accurate time-stamping of your test results.

1. Press the 'M' or 'S' buttons to adjust the year, month, and day.
2. Press the middle button (power button) to confirm each setting.
3. After setting the time, the device will automatically shut down.

Video 3.1: First-time setup for the URIT Blood Lipid Analyzer. This video demonstrates how to set the date and time on the device using the 'M', 'S', and power buttons.

3.2 Preparing the Lancing Device

The lancing device is used to obtain a small blood sample. Follow these steps to prepare it:

1. Rotate the front of the lancing device to remove the cap.
2. Insert a new lancet firmly into the lancing device.
3. Gently twist and remove the protective cap from the lancet.

4. Replace the lancing device cap.
5. Rotate the rear of the lancing device to set the penetration depth (usually 1-5, adjust as needed for your skin type).
6. Pull back the grey end of the lancing device until it clicks, indicating it is cocked and ready for use.

Video 3.2: Preparation of the lancing device. This video segment demonstrates how to insert a lancet, remove its protective cap, and set the lancing depth.

3.3 Checking the Code

Each batch of test strips comes with a code card. It is crucial to ensure the code displayed on the meter matches the code on your test strip vial for accurate results.

1. With the device turned OFF, insert the code card into the test strip slot.
2. Turn on the device. The code will be displayed on the screen.
3. Compare this code with the code printed on your test strip vial. If they match, you can proceed with testing. If they do not match, do not use the test strips and contact customer support.

Video 3.3: Code verification process. This video segment illustrates how to insert the code card into the meter and verify that the displayed code matches the test strip vial.

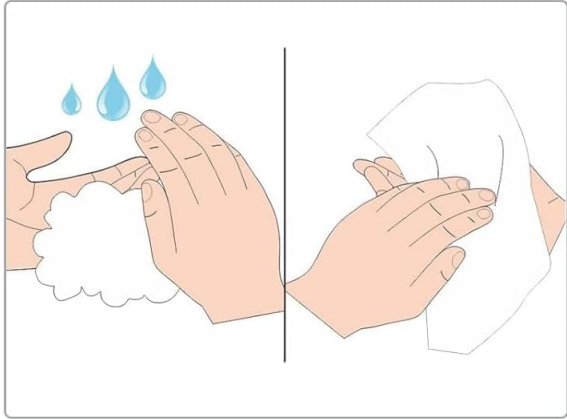
4. OPERATING INSTRUCTIONS

4.1 Blood Sample Collection

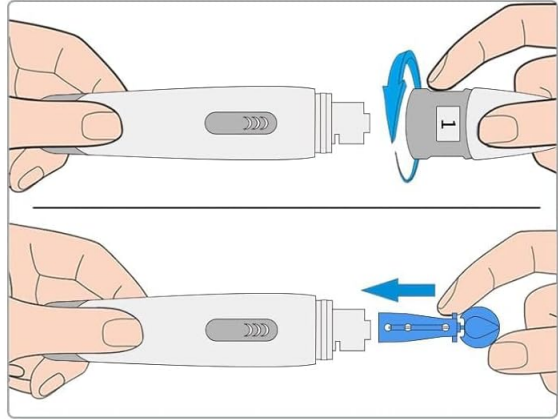
Proper blood collection is essential for accurate results. Follow these steps carefully:

1. Wash your hands thoroughly with soap and warm water, then dry them completely.
2. Disinfect the chosen fingertip (typically the side of the ring or middle finger) with an alcohol swab and allow it to air dry.
3. Hold the prepared lancing device firmly against the disinfected fingertip and press the launch button to prick the finger.
4. Gently squeeze the finger to form a round drop of blood. Wipe away the first drop of blood with a clean tissue or cotton swab.
5. Gently squeeze again to form a second, larger drop of blood.

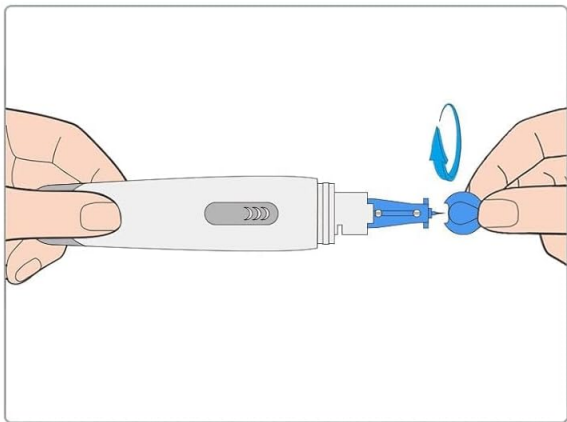
Blood Collecting Steps



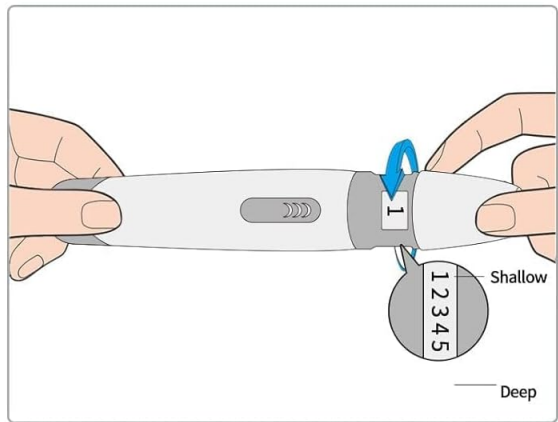
1 Wash your hands first, and dry your hands.



2 Pull off the pen cap and put the blood collection needle into the.



3 Crew down the blood collection needle cap



4 Put on the blood collection pen cover, adjust to the appropriate gear for different lancing depth.

Image 4.1: Detailed steps for blood collection using the lancing device. This visual guide covers hand washing, lancet insertion, securing the cap, and adjusting the lancing depth.

4.2 Applying Blood to the Test Strip

Once you have a sufficient blood sample, apply it to the test strip:

1. Turn on the device and insert a test strip into the testing slot. Ensure the white round hole on the strip is facing up.
2. When the blood drop symbol on the screen is flashing, apply the blood sample to the test hole of the strip. You can either directly drop the blood or use a capillary tube/pipette to transfer it.
3. Ensure a full sample is applied at once. Small amounts over several drops can lead to incorrect results.

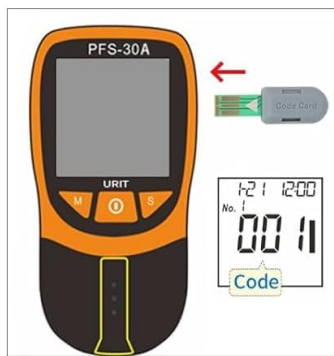
Video 4.2: Blood sample application and result display. This video demonstrates the correct method for collecting blood with a pipette and applying it to the test strip, followed by the display of results.

PFS-30 Quickstart Guide



1 Time Setting (first time use)

Press the "M" or "S" key to set the "year", "month" and "day" respectively, and then press the middle key to save.



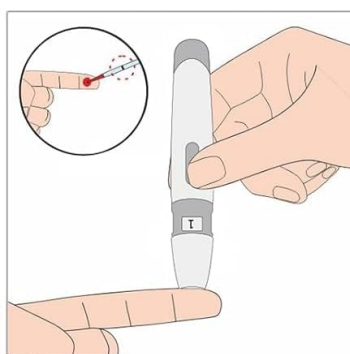
2 Code Card (with test strip)

Insert the code card when the device is turned OFF, and then turn on the device, the code will be displayed on the screen.



3 Insert the Test Strip

Insert the PFS30 test strip when the device is turned ON, continue only if codes are matching.



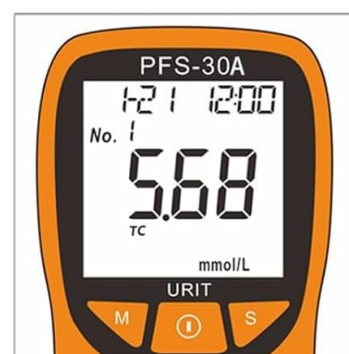
4 Draw Blood Sample

Draw blood sample using the fingerstick included in the package, then using a pipette to abstract the specimen.



5 Add the Blood Drop

when the blood drop symbol on screen is flashing, add the specimen to the test hole.



6 Read the Result

the result will show on screen in less than 2 mins, please dispose used blood sample devices according to your local regulation.

Image 4.2: Quickstart guide illustrating the entire testing process from setting time to reading results, including blood application.

4.3 Reading Results

After applying the blood sample, the device will begin its analysis:

1. The device screen will show a countdown animation.
2. Wait for approximately 2 minutes for the results to be processed.
3. The results for Total Cholesterol, Triglycerides, HDL, LDL, and TC/HDL ratio will be displayed on the screen. Use the 'S' button to cycle through the different parameters.

FAST RESULTS

- 2-mins fast results
- save time
- less waiting

Value in
2 minutes



Image 4.3: The URIT meter highlighting its fast result delivery, showing a countdown to the final reading.

4.4 Understanding Your Results

The URIT PFS-30/PFS-30A provides a comprehensive lipid panel. Consult your healthcare provider for personalized interpretation of your results and to understand what your numbers mean for your health.

- **Total Cholesterol (TC):** The total amount of cholesterol in your blood.
- **Triglycerides (TG):** A type of fat found in your blood.
- **High-Density Lipoprotein (HDL):** Often called "good" cholesterol.
- **Low-Density Lipoprotein (LDL):** Often called "bad" cholesterol.
- **TC/HDL Ratio:** The ratio of total cholesterol to HDL cholesterol.

5 TESTS IN 1 BLOOD DROP



- ✓ Total Cholesterol
- ✓ Triglycerides
- ✓ High-density Lipoprotein
- ✓ Low-density Lipoprotein
- ✓ TC/HDL Ratio



5 in 1



Easy to Use



Accurate



2-Mins



Professional



Large Memory



Big Screen



High Definition

Image 4.4: The meter's display showing the five different lipid parameters measured from a single blood sample.

RISK ANALYSIS

PFA-30 includes **FRA/PRO** evaluation of coronary artery disease (**CAD**)

FRA

The Framingham Risk Assessment is a gender-specific algorithm used to estimate the 10-year cardiovascular risk of an individual.

PRO

The PROCAM risk function, which is better known in Europe, estimates the probability of developing coronary death or first myocardial infarction (hard end-points) within 10 years.

Image 4.5: Information on risk analysis features, including Framingham Risk Assessment (FRA) and PROCAM risk function (PRO), which help estimate cardiovascular risk.

5. DATA STORAGE

The URIT PFS-30/PFS-30A meter has an internal memory capable of storing up to 300 of your most recent test results. Each record includes the test value, along with the corresponding time and date stamp.

To review past results, press the 'M' button when the device is on. You can navigate through the stored data using the 'M' and 'S' buttons.

LARGE MEMORY CAPACITY

Capable of storing 300 testing records



LARGE MONITOR and DIGITS

High Definition monitor with easy to read digits

Image 5.1: The meter's display illustrating its memory function and large, easy-to-read digits for reviewing stored test results.

6. MAINTENANCE

6.1 Cleaning the Meter

To ensure the longevity and accuracy of your device, keep it clean:

- Wipe the exterior of the meter with a soft, damp cloth.
- Do not use harsh chemicals, abrasive cleaners, or immerse the device in water.
- Ensure the test strip slot is free from dust or debris.

6.2 Storage

Store the URIT Lipid Test Kit and all its components in a cool, dry place, away from direct sunlight and extreme temperatures. Keep it out of reach of children.

- Store test strips in their original vial with the cap tightly closed to protect them from moisture.
- Do not use expired test strips.

7. TROUBLESHOOTING

If you encounter issues with your URIT Lipid Test Kit, refer to the following common problems and solutions:

Problem	Possible Cause	Solution
Meter does not turn on	Low or dead batteries	Replace batteries with new ones.
Error message displayed	Incorrect code, insufficient blood sample, expired strip, or strip inserted incorrectly.	Verify code, re-test with a new strip and sufficient sample, check strip expiration date and insertion.
Inconsistent results	Improper sample collection, environmental factors (temperature), or expired strips.	Ensure proper technique, test in recommended temperature range, use fresh strips.
Code on meter does not match strip vial	Using the wrong code card or strips from a different batch.	Ensure you are using the code card that came with the current batch of test strips. Do not use strips if codes do not match.

If the problem persists after attempting these solutions, please contact URIT customer support.

8. SPECIFICATIONS

- **Product Name:** URIT 5-in-1 Lipid Test Kit
- **Model:** PFS-30A
- **Test Parameters:** Total Cholesterol, Triglycerides, HDL, LDL, TC/HDL Ratio
- **Result Time:** Approximately 2 minutes
- **Sample Volume:** 35–40 µL
- **Memory Capacity:** Up to 300 test results with time and date stamps
- **Power Source:** (Not specified in input, typical for such devices is AAA batteries)
- **Operating Temperature:** (Not specified in input, refer to device packaging)
- **Storage Temperature:** (Not specified in input, refer to device packaging)
- **Package Dimensions:** 7.13 x 6.02 x 2.72 inches
- **Package Weight:** 14.89 ounces
- **Manufacturer:** URIT

9. WARRANTY AND SUPPORT

For warranty information, technical support, or any questions regarding the URIT PFS-30/PFS-30A 5-in-1 Lipid Test Kit, please refer to the warranty card included in your package or contact URIT

customer service directly. Contact details can typically be found on the product packaging or the official URIT website.

Please note that statements regarding dietary supplements have not been evaluated by the FDA and are not intended to diagnose, treat, cure, or prevent any disease or health condition.

Related Documents - PFS-30A

	<p>Primetal Security Products AEGIS Personal Fireproof Safe Owner's Manual</p> <p>Owner's manual for Primetal Security Products AEGIS Personal Fireproof Safes (PFS-10, PFS-20, PFS-30). Includes instructions on opening, battery installation, programming passcode, unlocking, locking, and securing the safe.</p>
	<p>Stack-On Personal Fireproof Safes with Electronic Lock - Owner's Manual</p> <p>Comprehensive owner's manual for Stack-On Personal Fireproof Safes with Electronic Lock (models PFS-012-BG-E, PFS-016-BG-E, PFS-019-BG-E), covering setup, operation, security, mounting, FAQs, and warranty.</p>
	<p>Bosch PFS 1000 2000 Bedienungsanleitung und Sicherheitshinweise</p> <p>Diese Bedienungsanleitung bietet detaillierte Informationen zur sicheren Verwendung und Wartung des Bosch PFS 1000 und PFS 2000 Feinsprühsystems, einschließlich Sicherheitshinweisen und Anwendungstipps.</p>
	<p>Philips Hue MR16 Transformer Compatibility List by Region</p> <p>A comprehensive list detailing the compatibility of various transformers with Philips Hue MR16 lamps, categorized by region (North America, Europe, Rest of the World). Includes testing status, wattage, and recommendations for optimal performance.</p>
	<p>Brookfield CT3 Texture Analyzer: Features, Specifications, and Accessories</p> <p>Explore the Brookfield CT3 Texture Analyzer for food QC and R&D. Discover its standard test modes, specifications, and a comprehensive range of fixtures and probes for various applications.</p>
	<p>PARKSIDE FARBSPRÜHSYSTEM PFS 400 A1 Bedienungsanleitung</p> <p>Umfassende Bedienungsanleitung für das PARKSIDE FARBSPRÜHSYSTEM PFS 400 A1. Enthält wichtige Sicherheitshinweise, technische Daten und Anleitungen zur Inbetriebnahme, Wartung und Entsorgung für Heimwerker.</p>

